

## VITA 67.3 SMPS Female to 2.4mm Male Cable FM-SR047CU Coax



### FMCA100367

#### Configuration

- Connector 1: SMPS Female
- Connector 2: 2.4mm Male
- Cable Type: FM-SR047CU-COIL
- Coax Flex Type: Semi-Rigid

#### Features

- Max Frequency 40 GHz

#### Applications

- General Purpose
- Laboratory Use

#### Description

The SMPS female to 2.4mm male cable using FM-SR047CU coax, part number FMCA100367, from Fairview Microwave is in-stock and ships same day. This Fairview SMPS to 2.4mm cable assembly has a female to male gender configuration with 50 ohm semi-rigid FM-SR047CU-COIL coax. Fairview Microwave's semi-rigid RF cable assemblies are ideal for high performance applications and can be formed, using proper tooling, to the routing pattern required. The FMCA100367 SMPS female to 2.4mm male cable assembly operates to 40 GHz.

Custom versions of most RF cable assemblies can be built and shipped same day. Custom cable assembly lengths can be obtained by specifying the desired length on the web site at time of order or by contacting a sales representative. Other RF cable assembly value added services including connector orientation or clocking, heat shrink booting and labeling are also available. RF testing can also be performed to document the electrical performance of your cable assembly.

#### Electrical Specifications

Description	Minimum	Typical	Maximum	Units
Frequency Range	DC		40	GHz
VSWR			1.4:1	

#### Specifications by Frequency

VITA 67.3 SMPS Female to 2.4mm Male  
Cable FM-SR047CU Coax



**FMCA100367**

Part Number	Length	Description	F1	F2	F3	F4	Units	Weight (lbs)
		Frequency	2500	5000	10000	20000	MHz	
FMCA100367	Custom Lengths Available	Insertion Loss (Typ.)	0.55	0.8	1.3	1.9	dB/ft	
			1.81	2.63	4.27	6.24	dB/m	
FMCA100367-6	6 In	Insertion Loss (Typ.)	0.44	0.59	0.88	1.23	dB	0.01
FMCA100367-9	9 In	Insertion Loss (Typ.)	0.58	0.79	1.21	1.71	dB	0.011
FMCA100367-12	12 In	Insertion Loss (Typ.)	0.72	0.99	1.53	2.18	dB	0.012
FMCA100367-18	18 In	Insertion Loss (Typ.)	0.99	1.39	2.18	3.13	dB	0.014
FMCA100367-24	24 In	Insertion Loss (Typ.)	1.27	1.79	2.83	4.08	dB	0.016

The insertion loss data for the base model does not include loss due to the connectors. Each length includes insertion loss due to the connectors.

Loss due to Connector 1: 0.1 dB  
 Loss due to Connector 2:  $0.04 \times \text{SQRT}(\text{FGHz})$  dB  
 Base Weight: 0.0119 pounds  
 Additional Weight per Inch: 0.00034 pounds

**Mechanical Specifications**

**Cable Assembly**

Width/Diameter 0.5 in [12.7 mm]  
 Weight 0.012 lbs [5.44 g]

**Cable**

Cable Type FM-SR047CU-COIL  
 Impedance 50 Ohms  
 Inner Conductor Type Solid  
 Inner Conductor Material and Plating Copper Clad Steel, Silver  
 Dielectric Type PTFE  
 Number of Shields 1  
 Outer Conductor 1 Material and Plating Copper  
 Repeated Minimum Bend Radius 0.05 in [1.27 mm]

## VITA 67.3 SMPS Female to 2.4mm Male Cable FM-SR047CU Coax



**FMCA100367**

### Connectors

Description	Connector 1	Connector 2
Type	SMPS Female	2.4mm Male
Impedance	50 Ohms	50 Ohms
Configuration	Straight	Straight
Mating Cycles		500
Contact Material and Plating	Beryllium Copper, Gold	Beryllium Copper, Gold over Nickel
Contact Plating Specification		50 µin minimum
Dielectric Type	PTFE	PEI
Outer Conductor Material and Plating	Beryllium Copper, Gold	
Body Material and Plating	Passivated Stainless Steel	Beryllium Copper, Gold over Nickel
Body Plating Specification		50 µin minimum
Coupling Nut Material and Plating		Passivated Stainless Steel
Coupling Nut Plating Specification		ASTM-A582
Hex Size		5/16 inch
Torque		8 in-lbs 0.9 Nm

### Environmental Specifications

Operating Range Temperature -55 to +100 deg C

**Compliance Certifications** (see [product page](#) for current document)

### Plotted and Other Data

Notes:

## VITA 67.3 SMPS Female to 2.4mm Male Cable FM-SR047CU Coax



### FMCA100367

#### Typical Performance Data

#### How to Order

Part Number Configuration: **FMCA100367**    **- xx**    **uu**

Unit of Measure:  
cm = Centimeters  
<blank> = Inches

Length

Base Number

Example: FMCA100367-12 = 12 inches long cable  
FMCA100367-100cm = 100 cm long cable

VITA 67.3 SMPS Female to 2.4mm Male Cable FM-SR047CU Coax from Fairview Microwave is in-stock and available to ship same-day. All of our RF/microwave products are available off-the-shelf from our ISO 9001:2008 certified facilities in Lewisville, Texas. Fairview Microwave is RF on-demand.

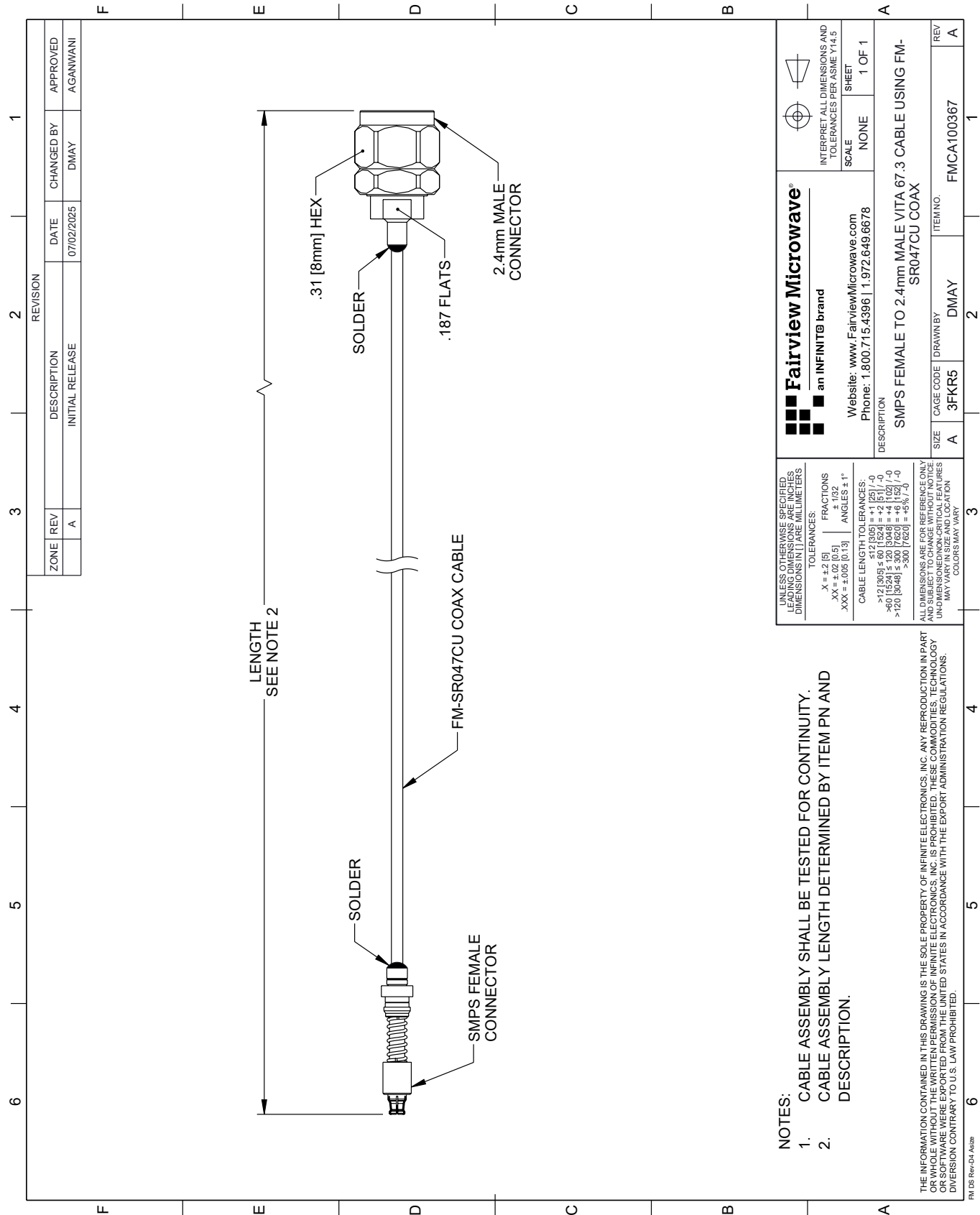
For additional information on this product, please click the following link: [VITA 67.3 SMPS Female to 2.4mm Male Cable FM-SR047CU Coax FMCA100367](https://www.fairviewmicrowave.com/vita-67.3-smps-female-to-2.4mm-male-cable-fm-sr047cu-coax-fmca100367-p.aspx)

URL: <https://www.fairviewmicrowave.com/vita-67.3-smps-female-to-2.4mm-male-cable-fm-sr047cu-coax-fmca100367-p.aspx>

The information contained within this document is accurate to the best of our knowledge and representative of the part described herein. It may be necessary to make modifications to the part and/or the documentation of the part in order to implement improvements. Fairview Microwave reserves the right to make such changes as required. Unless otherwise stated, all specifications are nominal. Fairview Microwave does not make any representation or warranty regarding the suitability of the part described herein for any particular purpose, and Fairview Microwave does not assume liability arising out of the use of any part or document.

FMCA100367 CAD Drawing

VITA 67.3 SMPS Female to 2.4mm Male Cable FM-SR047CU Coax



- NOTES:
- 1. CABLE ASSEMBLY SHALL BE TESTED FOR CONTINUITY.
  - 2. CABLE ASSEMBLY LENGTH DETERMINED BY ITEM PN AND DESCRIPTION.

UNLESS OTHERWISE SPECIFIED, LEADING DIMENSIONS ARE IN INCHES. UNLESS OTHERWISE SPECIFIED, DIMENSIONS IN [ ] ARE MILLIMETERS.		Fairview Microwave® an INFINITI® brand		INTERPRET ALL DIMENSIONS AND TOLERANCES PER ASME Y14.5	
TOLERANCES:		Website: <a href="http://www.FairviewMicrowave.com">www.FairviewMicrowave.com</a> Phone: 1.800.715.4396   1.972.649.6678		SCALE: NONE	
.X = ±.2 [5] .XX = ±.02 [0.5] .XXX = ±.005 [0.13]		FRACTIONS: ± 1/32 ANGLES: ± 1°		SHEET: 1 OF 1	
CABLE LENGTH TOLERANCES:		DESCRIPTION: SMPS FEMALE TO 2.4mm MALE VITA 67.3 CABLE USING FM-SR047CU COAX			
>12 [305] ≤ 60 [1524] = ±.125 [-0]		SIZE: A		CAGE CODE: 3FKR5	
>60 [1524] ≤ 120 [3048] = ±.102 [-0]		DRAWN BY: DMAY		ITEM NO: FMCA100367	
>120 [3048] ≤ 300 [7620] = ±.05 [-0]		ALL DIMENSIONS ARE FOR REFERENCE ONLY. UNLESS OTHERWISE SPECIFIED, DIMENSIONS ARE IN INCHES. UNLESS OTHERWISE SPECIFIED, DIMENSIONS IN [ ] ARE MILLIMETERS. MAY VARY IN SIZE AND LOCATION. COLORS MAY VARY.		REV: A	