

## Low Loss 4.3-10 Male to N Male Weatherproof Cable LMR-400 Coax with Times Microwave Components



### FMCA100306/WP

#### Configuration

- Connector 1: 4.3-10 Male
- Connector 2: N Male
- Cable Type: LMR-400
- Coax Flex Type: Flexible

#### Features

- Max Frequency 6 GHz
- Shielding Effectivity > 90 dB
- 85% Phase Velocity
- Double Shielded
- PE Jacket
- Silicone Connector Boot
- IP68 Rated

#### Applications

- General Purpose
- Laboratory Use

#### Description

The Fairview Microwave FMCA100306/WP is a weatherproof low loss cable assembly that comes with 4.3-10 male connection with weatherproof boot on one end and type N male with weatherproof boot on the other. Fairview Microwave's RF coaxial cable assembly products are designed for typical use, production, laboratory test and measurement, defense/military, aerial antenna towers, etc. The low loss cable has a 50 Ohm impedance and is specifically ready for quicker shipment than most in the industry can provide.

This weatherproof low loss RF cable assembly operates at a maximum frequency of 6 GHz. Our RF cable assembly has a PE jacket with 0.405 inches diameter. The 4.3-10 male to type N male cable assembly FMCA100306/WP is built with LMR-400 coax, which has a flexible design. This RF cable assembly with 0.5 inches diameter has copper clad aluminum as cable's inner conducting material and PE (F) dielectric type. The weatherproof boot low loss cable can operate at a temperature range of -40 to 85 degrees C. Additional dimensions, specifications, and CAD drawings for this FMCA100306/WP low loss RF cable are available on our downloadable PDF datasheet.

Fairview Microwave stocks a wide selection of weatherproof low loss cable assemblies that ship the same business day as ordered from our warehouse. Make your online purchase right now to take advantage of our same-day shipping. For further information on similar products, our expert technical support and knowledgeable sales team can help you get the ideal 4.3-10 male to type N male cable assembly as per your requirements.

#### Electrical Specifications

Description	Minimum	Typical	Maximum	Units
Frequency Range	DC		6	GHz
VSWR			1.4:1	
Velocity of Propagation		85		%
RF Shielding	90			dB
Capacitance		23.9 [78.41]		pF/ft [pF/m]
Inductance		0.06 [0.2]		uH/ft [uH/m]

Low Loss 4.3-10 Male to N Male Weatherproof Cable  
LMR-400 Coax with Times Microwave Components



**FMCA100306/WP**

**Electrical Specifications**

Description	Minimum	Typical	Maximum	Units
DC Resistance Inner Conductor		1.39 [4.56]		Ohms/1000ft [Ohms/Km]
DC Resistance Outer Conductor		1.65 [5.41]		Ohms/1000ft [Ohms/Km]
Dielectric Withstanding Voltage (DC)			2,500	Vdc
Jacket Spark			8,000	Vrms

**Specifications by Frequency**

Part Number	Length	Description	F1	F2	F3	F4	F5	Units	Weight (lbs)
			Frequency	250	500	1000	2500	6000	
FMCA100306/WP	Custom Lengths Available	Insertion Loss (Typ.)	0.02	0.028	0.041	0.068	0.108	dB/ft	
			0.07	0.1	0.14	0.23	0.36	dB/m	
FMCA100306/WP-12	12 Inch	Insertion Loss (Typ.)	0.17	0.2	0.25	0.33	0.46	dB	0.764
FMCA100306/WP-24	24 Inch	Insertion Loss (Typ.)	0.19	0.23	0.29	0.4	0.57	dB	0.831
FMCA100306/WP-36	36 Inch	Insertion Loss (Typ.)	0.21	0.26	0.33	0.47	0.67	dB	0.898
FMCA100306/WP-48	48 Inch	Insertion Loss (Typ.)	0.23	0.29	0.37	0.54	0.78	dB	0.965
FMCA100306/WP-60	60 Inch	Insertion Loss (Typ.)	0.25	0.32	0.41	0.6	0.89	dB	1.032

The insertion loss data for the base model does not include loss due to the connectors. Each length includes insertion loss due to the connectors.

Loss due to Connector 1: 0.1\*SQRT(FGHz) dB  
 Loss due to Connector 2: 0.1 dB  
 Base Weight: 0.764 pounds  
 Additional Weight per Inch: 0.00558 pounds

**Mechanical Specifications**

**Cable Assembly**

Width/Diameter 0.5 in [12.7 mm]  
 Weight 0.764 lbs [346.54 g]

**Cable**

Cable Type LMR-400  
 Impedance 50 Ohms  
 Inner Conductor Type Solid  
 Inner Conductor Material and Plating Copper Clad Aluminum  
 Dielectric Type PE (F)  
 Number of Shields 2  
 Shield Layer 1 Aluminum Tape  
 Shield Layer 2 Tinned Copper Braid  
 Jacket Material PE  
 Jacket Diameter 0.405 in [10.29 mm]  
 One Time Minimum Bend Radius 1 in [25.4 mm]  
 Repeated Minimum Bend Radius 4 in [101.6 mm]  
 Bending Moment 0.5 lbs-ft [0.68 N-m]  
 Flat Plate Crush 40 lbs/in [0.71 Kg/mm]

Low Loss 4.3-10 Male to N Male Weatherproof Cable  
LMR-400 Coax with Times Microwave Components



**FMCA100306/WP**

Tensile Strength 160 lbs [72.57 Kg]

**Connectors**

Description	Connector 1	Connector 2
Type	4.3-10 Male	N Male
Option	Weatherproof Boot	Weatherproof Boot
Impedance	50 Ohms	50 Ohms
Configuration	Straight	Straight
Contact Material and Plating	Brass, Silver	Brass, Gold
Contact Plating Specification		50 µin minimum
Dielectric Type	PTFE	PTFE
Body Material and Plating	Brass, Tri-Metal	Brass, Tri-Metal
Body Plating Specification		150 µin minimum
Coupling Nut Material and Plating	Brass, Tri-Metal	Brass, Tri-Metal
Coupling Nut Plating Specification		150 µin minimum
Boot Material	Silicone	Silicone

**Environmental Specifications**

Operating Range Temperature -40 to +85 deg C  
Ingress Protection (IP) Rating IP68

**Compliance Certifications** (see [product page](#) for current document)

**Plotted and Other Data**

Notes:  
Values at 25°C, sea level.

Low Loss 4.3-10 Male to N Male Weatherproof Cable  
LMR-400 Coax with Times Microwave Components



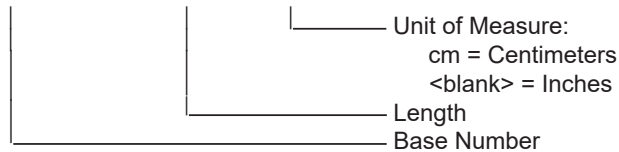
**FMCA100306/WP**

**Typical Performance Data**

**How to Order**

Part Number Configuration:

**FMCA100306/WP - xx uu**



Example: FMCA100306/WP-12 = 12 inches long cable  
FMCA100306/WP-100cm = 100 cm long cable

Low Loss 4.3-10 Male to N Male Weatherproof Cable LMR-400 Coax with Times Microwave Components from Fairview Microwave is in-stock and available to ship same-day. All of our RF/microwave products are available off-the-shelf from our ISO 9001:2008 certified facilities in Lewisville, Texas. Fairview Microwave is RF on-demand.

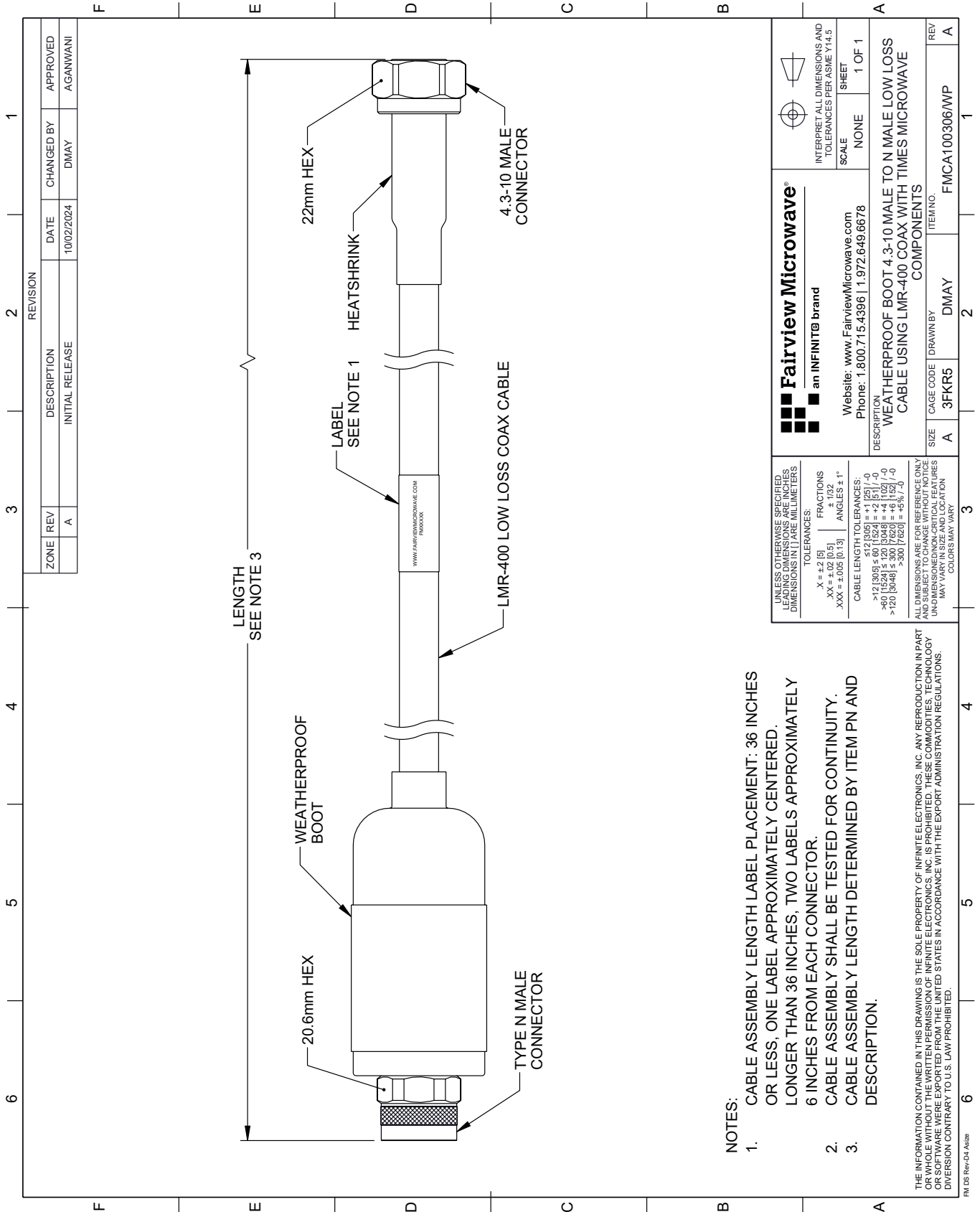
For additional information on this product, please click the following link: [Low Loss 4.3-10 Male to N Male Weatherproof Cable LMR-400 Coax with Times Microwave Components FMCA100306/WP](#)

URL: <https://www.fairviewmicrowave.com/low-loss-4.3-10-male-to-n-male-weatherproof-cable-lmr-400-coax-with-times-microwave-components-fmca100306-wp-p.aspx>

The information contained within this document is accurate to the best of our knowledge and representative of the part described herein. It may be necessary to make modifications to the part and/or the documentation of the part in order to implement improvements. Fairview Microwave reserves the right to make such changes as required. Unless otherwise stated, all specifications are nominal. Fairview Microwave does not make any representation or warranty regarding the suitability of the part described herein for any particular purpose, and Fairview Microwave does not assume liability arising out of the use of any part or document.

# FMCA100306/WP CAD Drawing

Low Loss 4.3-10 Male to N Male Weatherproof Cable LMR-400 Coax with Times Microwave Components



 <b>Fairview Microwave</b> an INFINIT® brand		Website: <a href="http://www.FairviewMicrowave.com">www.FairviewMicrowave.com</a> Phone: 1.800.715.4396   1.972.649.6678	INTERPRET ALL DIMENSIONS AND TOLERANCES PER ASME Y14.5 SCALE: NONE SHEET: 1 OF 1
UNLESS OTHERWISE SPECIFIED, LEADING DIMENSIONS ARE IN INCHES AND TRAILING DIMENSIONS ARE IN MILLIMETERS. TOLERANCES: .X = ±.2 [5] .XX = ±.02 [0.5] .XXX = ±.005 [0.13] FRACTIONS: ± 1/32 ANGLES: ± 1° CABLE LENGTH TOLERANCES: >12 [305] ≤ 60 [1524] = ±1 [25] / -0 >60 [1524] ≤ 120 [3048] = ±4 [102] / -0 >120 [3048] ≤ 300 [7620] = ±5% / 0		DESCRIPTION: WEATHERPROOF BOOT 4.3-10 MALE TO N MALE LOW LOSS CABLE USING LMR-400 COAX WITH TIMES MICROWAVE COMPONENTS	REV: A ITEM NO: FMCA100306/WP
SIZE: A CAGE CODE: 3FKR5 DRAWN BY: DMAY	COMPONENTS:	CAGE CODE: DMAY	REV: A

- NOTES:**
- CABLE ASSEMBLY LENGTH LABEL PLACEMENT: 36 INCHES OR LESS, ONE LABEL APPROXIMATELY CENTERED. LONGER THAN 36 INCHES, TWO LABELS APPROXIMATELY 6 INCHES FROM EACH CONNECTOR.
  - CABLE ASSEMBLY SHALL BE TESTED FOR CONTINUITY.
  - CABLE ASSEMBLY LENGTH DETERMINED BY ITEM PN AND DESCRIPTION.

ALL DIMENSIONS ARE FOR REFERENCE ONLY. UNLESS OTHERWISE SPECIFIED, LEADING DIMENSIONS ARE IN INCHES AND TRAILING DIMENSIONS ARE IN MILLIMETERS. UNLESS OTHERWISE SPECIFIED, LEADING DIMENSIONS ARE IN INCHES AND TRAILING DIMENSIONS ARE IN MILLIMETERS. UNLESS OTHERWISE SPECIFIED, LEADING DIMENSIONS ARE IN INCHES AND TRAILING DIMENSIONS ARE IN MILLIMETERS. UNLESS OTHERWISE SPECIFIED, LEADING DIMENSIONS ARE IN INCHES AND TRAILING DIMENSIONS ARE IN MILLIMETERS.