

## Low Loss N Female to N Female Cable LMR-600-UF Coax



### FMCA100290

#### Configuration

- Connector 1: N Female
- Connector 2: N Female
- Cable Type: LMR-600-UF
- Coax Flex Type: Flexible

#### Features

- Max Frequency 8 GHz
- Shielding Effectivity > 90 dB
- 87% Phase Velocity
- Double Shielded
- TPE Jacket

#### Applications

- General Purpose
- Laboratory Use

#### Description

The type N female to type N female cable using LMR-600-UF coax, part number FMCA100290, from Fairview Microwave is in-stock and ships same day. This Fairview type N to type N cable assembly has a female to female gender configuration with 50 ohm flexible LMR-600-UF coax. Fairview Microwave's flexible RF cable assemblies are ideal for applications where tight bends and continual flexure are required. The FMCA100290 type N female to type N female cable assembly operates to 8 GHz. The double shielding of this Fairview cable assembly provides excellent shielding effectiveness of better than 90 dB.

Custom versions of most RF cable assemblies can be built and shipped same day. Custom cable assembly lengths can be obtained by specifying the desired length on the web site at time of order or by contacting a sales representative. Other RF cable assembly value added services including connector orientation or clocking, heat shrink booting and labeling are also available. RF testing can also be performed to document the electrical performance of your cable assembly.

#### Electrical Specifications

Description	Minimum	Typical	Maximum	Units
Frequency Range	DC		8	GHz
VSWR			1.4:1	
Velocity of Propagation		87		%
RF Shielding	90			dB
Group Delay		1.17 [3.84]		ns/ft [ns/m]
Capacitance		23.4 [76.77]		pF/ft [pF/m]
Inductance		0.058 [0.19]		uH/ft [uH/m]
DC Resistance Inner Conductor		0.43 [1.41]		Ohms/1000ft [Ohms/Km]
DC Resistance Outer Conductor		1.2 [3.94]		Ohms/1000ft [Ohms/Km]
Jacket Spark			8,000	Vrms

#### Specifications by Frequency

## Low Loss N Female to N Female Cable LMR-600-UF Coax



### FMCA100290

Part Number	Length	Description	F1	F2	F3	F4	F5	Units	Weight (lbs)
		Frequency	500	1000	2000	4000	8000	MHz	
FMCA100290	Custom Lengths Available	Insertion Loss (Typ.)	0.022	0.032	0.047	0.062	0.087	dB/ft	
			0.08	0.11	0.16	0.21	0.29	dB/m	
FMCA100290-12	12 inch	Insertion Loss (Typ.)	0.23	0.24	0.25	0.27	0.29	dB	0.43
FMCA100290-24	24 inch	Insertion Loss (Typ.)	0.25	0.27	0.3	0.33	0.38	dB	0.607
FMCA100290-36	36 inch	Insertion Loss (Typ.)	0.27	0.3	0.35	0.39	0.47	dB	0.783
FMCA100290-60	60 inch	Insertion Loss (Typ.)	0.31	0.36	0.44	0.51	0.64	dB	1.135
FMCA100290-300	300 inch	Insertion Loss (Typ.)	0.75	1	1.38	1.75	2.38	dB	4.655

The insertion loss data for the base model does not include loss due to the connectors. Each length includes insertion loss due to the connectors.

Loss due to Connector 1:	0.1 dB
Loss due to Connector 2:	0.1 dB
Base Weight:	0.43 pounds
Additional Weight per Inch:	0.01467 pounds

### Mechanical Specifications

#### Cable Assembly

Width/Diameter	0.5 in [12.7 mm]
Weight	0.43 lbs [195.04 g]

#### Cable

Cable Type	LMR-600-UF
Impedance	50 Ohms
Inner Conductor Type	Stranded
Inner Conductor Material and Plating	Copper
Dielectric Type	Foam PE
Number of Shields	2
Shield Layer 1	Aluminum Tape
Shield Layer 2	Tinned Copper
Jacket Material	TPE, Black
Jacket Diameter	0.59 in [14.99 mm]
One Time Minimum Bend Radius	1.5 in [38.1 mm]
Repeated Minimum Bend Radius	6 in [152.4 mm]
Bending Moment	1.75 lbs-ft [2.37 N-m]
Flat Plate Crush	40 lbs/in [0.71 Kg/mm]
Tensile Strength	350 lbs [158.76 Kg]

Low Loss N Female to N Female Cable LMR-600-UF Coax

FMCA100290



Connectors

Description	Connector 1	Connector 2
Type	N Female	N Female
Impedance	50 Ohms	50 Ohms
Configuration	Straight	Straight
Contact Material and Plating	Phosphor Bronze, Gold	Phosphor Bronze, Gold
Dielectric Type	PTFE	PTFE
Body Material and Plating	Brass, Tri-Metal	Brass, Tri-Metal

Environmental Specifications

Operating Range Temperature-40 to +85 deg C

Compliance Certifications (see [product page](#) for current document)

Plotted and Other Data

Notes:

## Low Loss N Female to N Female Cable LMR-600-UF Coax



### FMCA100290

#### Typical Performance Data

#### How to Order

Part Number Configuration: **FMCA100290**    **- xx**    **uu**

Unit of Measure:  
cm = Centimeters  
<blank> = Inches

Length

Base Number

Example: FMCA100290-12 = 12 inches long cable  
FMCA100290-100cm = 100 cm long cable

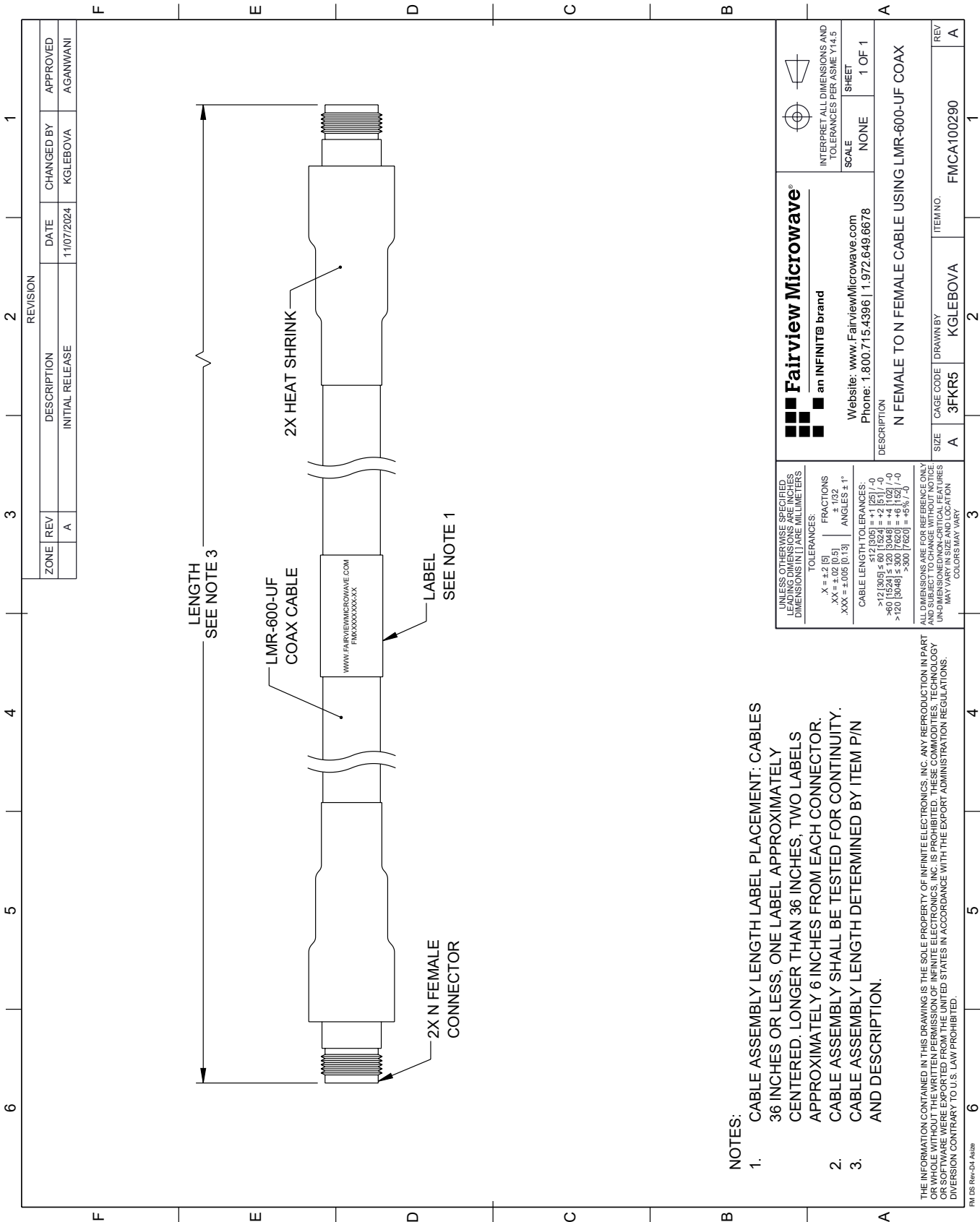
Low Loss N Female to N Female Cable LMR-600-UF Coax from Fairview Microwave is in-stock and available to ship same-day. All of our RF/microwave products are available off-the-shelf from our ISO 9001:2008 certified facilities in Lewisville, Texas. Fairview Microwave is RF on-demand.

For additional information on this product, please click the following link: [Low Loss N Female to N Female Cable LMR-600-UF Coax FMCA100290](https://www.fairviewmicrowave.com/low-loss-n-female-to-n-female-cable-lmr-600-uf-coax-fmca100290-p.aspx)

URL: <https://www.fairviewmicrowave.com/low-loss-n-female-to-n-female-cable-lmr-600-uf-coax-fmca100290-p.aspx>

The information contained within this document is accurate to the best of our knowledge and representative of the part described herein. It may be necessary to make modifications to the part and/or the documentation of the part in order to implement improvements. Fairview Microwave reserves the right to make such changes as required. Unless otherwise stated, all specifications are nominal. Fairview Microwave does not make any representation or warranty regarding the suitability of the part described herein for any particular purpose, and Fairview Microwave does not assume liability arising out of the use of any part or document.

FMCA100290 CAD Drawing
Low Loss N Female to N Female Cable LMR-600-UF Coax



- NOTES:
1. CABLE ASSEMBLY LENGTH LABEL PLACEMENT: CABLES 36 INCHES OR LESS, ONE LABEL APPROXIMATELY CENTERED. LONGER THAN 36 INCHES, TWO LABELS APPROXIMATELY 6 INCHES FROM EACH CONNECTOR.
2. CABLE ASSEMBLY SHALL BE TESTED FOR CONTINUITY.
3. CABLE ASSEMBLY LENGTH DETERMINED BY ITEM P/N AND DESCRIPTION.

THE INFORMATION CONTAINED IN THIS DRAWING IS THE SOLE PROPERTY OF INFINITE ELECTRONICS, INC. ANY REPRODUCTION IN PART OR WHOLE WITHOUT THE WRITTEN PERMISSION OF INFINITE ELECTRONICS, INC. IS PROHIBITED. THESE COMMODITIES, TECHNOLOGY OR SOFTWARE WERE EXPORTED FROM THE UNITED STATES IN ACCORDANCE WITH THE EXPORT ADMINISTRATION REGULATIONS. DIVISION CONTRARY TO U.S. LAW PROHIBITED.

FM DS Rev-D4 Addis