

Low Loss RA TNC Male to SMA Female Cable LMR-400-UF Coax



FMCA100243

Configuration

- Connector 1: TNC Male Right Angle
- Connector 2: SMA Female
- Cable Type: LMR-400-UF
- Coax Flex Type: Flexible

Features

- Max Frequency 8 GHz
- Shielding Effectivity > 90 dB
- 85% Phase Velocity
- Double Shielded
- TPE Jacket

Applications

- General Purpose
- Laboratory Use

Description

The RA TNC male to SMA female cable using LMR-400-UF coax, part number FMCA100243, from Fairview Microwave is in-stock and ships same day. This Fairview TNC to SMA cable assembly has a male to female gender configuration with 50 ohm flexible LMR-400-UF coax. Fairview Microwave's flexible RF cable assemblies are ideal for applications where tight bends and continual flexure are required. The FMCA100243 TNC male to SMA female cable assembly operates to 8 GHz. The right angle TNC interface on the LMR-400-UF cable allows for easier connections in tight spaces. The double shielding of this Fairview cable assembly provides excellent shielding effectiveness of better than 90 dB.

Custom versions of most RF cable assemblies can be built and shipped same day. Custom cable assembly lengths can be obtained by specifying the desired length on the web site at time of order or by contacting a sales representative. Other RF cable assembly value added services including connector orientation or clocking, heat shrink booting and labeling are also available. RF testing can also be performed to document the electrical performance of your cable assembly.

Electrical Specifications

Description	Minimum	Typical	Maximum	Units
Frequency Range	DC		8	GHz
VSWR			1.4:1	
Velocity of Propagation		85		%
RF Shielding	90			dB
Group Delay		1.2 [3.94]		ns/ft [ns/m]
Capacitance		23.9 [78.41]		pF/ft [pF/m]
Inductance		0.06 [0.2]		uH/ft [uH/m]
DC Resistance Inner Conductor		1.07 [3.51]		Ohms/1000ft [Ohms/Km]
DC Resistance Outer Conductor		1.65 [5.41]		Ohms/1000ft [Ohms/Km]

Low Loss RA TNC Male to SMA Female
Cable LMR-400-UF Coax



FMCA100243

Electrical Specifications

Description	Minimum	Typical	Maximum	Units
Jacket Spark			8,000	Vrms

Specifications by Frequency

Part Number	Length	Description	F1	F2	F3	F4	F5	Units	Weight (lbs)
		Frequency	500	1000	2000	4000	8000	MHz	
FMCA100243	Custom Lengths Available	Insertion Loss (Typ.)	0.035	0.05	0.072	0.094	0.13	dB/ft	
			0.12	0.17	0.24	0.31	0.43	dB/m	
FMCA100243-12	12 inch	Insertion Loss (Typ.)	0.39	0.4	0.43	0.45	0.48	dB	0.265
FMCA100243-24	24 inch	Insertion Loss (Typ.)	0.42	0.45	0.5	0.54	0.61	dB	0.352
FMCA100243-36	36 inch	Insertion Loss (Typ.)	0.46	0.5	0.57	0.64	0.74	dB	0.439
FMCA100243-60	60 inch	Insertion Loss (Typ.)	0.53	0.6	0.71	0.82	1	dB	0.613
FMCA100243-300	300 inch	Insertion Loss (Typ.)	1.23	1.6	2.15	2.7	3.6	dB	2.353

The insertion loss data for the base model does not include loss due to the connectors. Each length includes insertion loss due to the connectors.

Loss due to Connector 1:	0.25 dB
Loss due to Connector 2:	0.1 dB
Base Weight:	0.265 pounds
Additional Weight per Inch:	0.00725 pounds

Mechanical Specifications

Cable Assembly

Width/Diameter	0.5 in [12.7 mm]
Weight	0.265 lbs [120.2 g]

Cable

Cable Type	LMR-400-UF
Impedance	50 Ohms
Inner Conductor Type	Stranded
Inner Conductor Material and Plating	Copper
Dielectric Type	PE (F)
Number of Shields	2
Shield Layer 1	Aluminum Tape
Shield Layer 2	Tinned Copper Braid
Jacket Material	TPE, Black
Jacket Diameter	0.405 in [10.29 mm]
One Time Minimum Bend Radius	1 in [25.4 mm]
Repeated Minimum Bend Radius	4 in [101.6 mm]
Bending Moment	0.38 lbs-ft [0.52 N-m]
Flat Plate Crush	20 lbs/in [0.36 Kg/mm]
Tensile Strength	160 lbs [72.57 Kg]

Low Loss RA TNC Male to SMA Female
Cable LMR-400-UF Coax



FMCA100243

Connectors

Description	Connector 1	Connector 2
Type	TNC Male Right Angle	SMA Female
Impedance	50 Ohms	50 Ohms
Configuration	Right Angle	Straight
Mating Cycles	500	
Contact Material and Plating	Brass, Gold	Brass, Gold
Contact Plating Specification	50 µin	
Dielectric Type	Teflon	PTFE
Body Material and Plating	Brass, Tri-metal	Brass, Gold
Body Plating Specification	80 µin	
Coupling Nut Material and Plating	Brass, Tri-Metal	
Coupling Nut Plating Specification	80 µin	
Hex Size	15.8 mm	
Torque	15 in-lbs 1.7 Nm	
Seal Gasket Material	Silicone	

Environmental Specifications

Compliance Certifications (see [product page](#) for current document)

Plotted and Other Data

Notes:

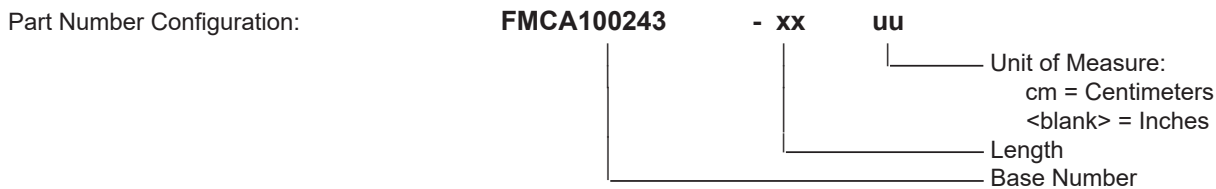
Low Loss RA TNC Male to SMA Female
Cable LMR-400-UF Coax



FMCA100243

Typical Performance Data

How to Order



Example: FMCA100243-12 = 12 inches long cable
FMCA100243-100cm = 100 cm long cable

Low Loss RA TNC Male to SMA Female Cable LMR-400-UF Coax from Fairview Microwave is in-stock and available to ship same-day. All of our RF/microwave products are available off-the-shelf from our ISO 9001:2008 certified facilities in Lewisville, Texas. Fairview Microwave is RF on-demand.

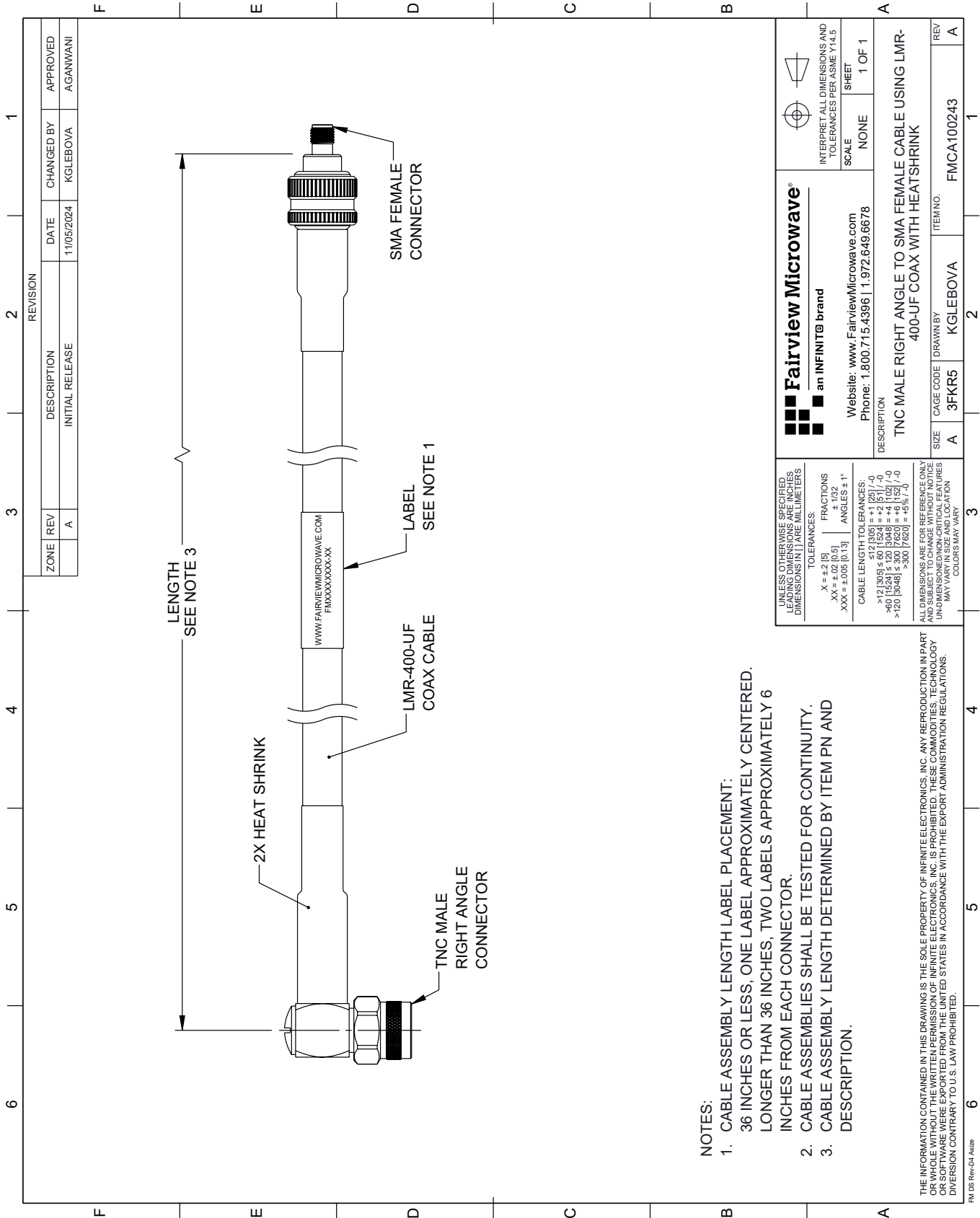
For additional information on this product, please click the following link: [Low Loss RA TNC Male to SMA Female Cable LMR-400-UF Coax FMCA100243](#)

URL: <https://www.fairviewmicrowave.com/low-loss-ra-tnc-male-to-sma-female-cable-lmr-400-uf-coax-fmca100243-p.aspx>

The information contained within this document is accurate to the best of our knowledge and representative of the part described herein. It may be necessary to make modifications to the part and/or the documentation of the part in order to implement improvements. Fairview Microwave reserves the right to make such changes as required. Unless otherwise stated, all specifications are nominal. Fairview Microwave does not make any representation or warranty regarding the suitability of the part described herein for any particular purpose, and Fairview Microwave does not assume liability arising out of the use of any part or document.

FMCA100243 CAD Drawing

Low Loss RA TNC Male to SMA Female Cable LMR-400-UF Coax



NOTES:

1. CABLE ASSEMBLY LENGTH LABEL PLACEMENT: 36 INCHES OR LESS, ONE LABEL APPROXIMATELY CENTERED. LONGER THAN 36 INCHES, TWO LABELS APPROXIMATELY 6 INCHES FROM EACH CONNECTOR.
2. CABLE ASSEMBLIES SHALL BE TESTED FOR CONTINUITY.
3. CABLE ASSEMBLY LENGTH DETERMINED BY ITEM PN AND DESCRIPTION.

THE INFORMATION CONTAINED IN THIS DRAWING IS THE SOLE PROPERTY OF INFINITE ELECTRONICS, INC. ANY REPRODUCTION IN PART OR WHOLE WITHOUT THE WRITTEN PERMISSION OF INFINITE ELECTRONICS, INC. IS PROHIBITED. THESE COMMODITIES, TECHNOLOGY OR SOFTWARE WERE EXPORTED FROM THE UNITED STATES IN ACCORDANCE WITH THE EXPORT ADMINISTRATION REGULATIONS. DIVISION CONTRARY TO U.S. LAW PROHIBITED.

FM DS Rev-D4 Alt2b