

Low Loss RA TNC Male to RA TNC Male Cable LMR-400-UF Coax with Times Microwave Components, 180 Degree Clocking



FMCA100235

Configuration

- Connector 1: TNC Male Right Angle
- Connector 2: TNC Male Right Angle
- Cable Type: LMR-400-UF
- Coax Flex Type: Flexible

Features

- Max Frequency 8 GHz
- Shielding Effectivity > 90 dB
- 85% Phase Velocity
- Double Shielded
- TPE Jacket
- 500 Mating Cycles

Applications

- General Purpose
- Laboratory Use

Description

The RA TNC male to RA TNC male cable using LMR-400-UF coax, part number FMCA100235, from Fairview Microwave is in-stock and ships same day. This Fairview TNC to TNC cable assembly has a male to male gender configuration with 50 ohm flexible LMR-400-UF coax. Fairview Microwave's flexible RF cable assemblies are ideal for applications where tight bends and continual flexure are required. The FMCA100235 TNC male to TNC male cable assembly operates to 8 GHz. The right angle TNC interfaces on the LMR-400-UF cable allow for easier connections in tight spaces. The double shielding of this Fairview cable assembly provides excellent shielding effectiveness of better than 90 dB.

Custom versions of most RF cable assemblies can be built and shipped same day. Custom cable assembly lengths can be obtained by specifying the desired length on the web site at time of order or by contacting a sales representative. Other RF cable assembly value added services including connector orientation or clocking, heat shrink booting and labeling are also available. RF testing can also be performed to document the electrical performance of your cable assembly.

Electrical Specifications

Description	Minimum	Typical	Maximum	Units
Frequency Range	DC		8	GHz
VSWR			1.4:1	
Velocity of Propagation		85		%
RF Shielding	90			dB
Group Delay		1.2 [3.94]		ns/ft [ns/m]
Capacitance		23.9 [78.41]		pF/ft [pF/m]
Inductance		0.06 [0.2]		uH/ft [uH/m]
DC Resistance Inner Conductor		1.07 [3.51]		Ohms/1000ft [Ohms/Km]
DC Resistance Outer Conductor		1.65 [5.41]		Ohms/1000ft [Ohms/Km]
Operating Voltage (AC)			500	Vrms

Low Loss RA TNC Male to RA TNC Male Cable
LMR-400-UF Coax with Times Microwave
Components, 180 Degree Clocking



FMCA100235

Electrical Specifications

Description	Minimum	Typical	Maximum	Units
Dielectric Withstanding Voltage (AC)			1,000	Vrms
Jacket Spark			8,000	Vrms

Specifications by Frequency

Part Number	Length	Description	F1	F2	F3	F4	F5	Units	Weight (lbs)
		Frequency	500	1000	2000	4000	8000	MHz	
FMCA100235	Custom Lengths Available	Insertion Loss (Typ.)	0.035 0.12	0.05 0.17	0.072 0.24	0.094 0.31	0.13 0.43	dB/ft dB/m	
FMCA100235-12	12 inch	Insertion Loss (Typ.)	0.44	0.45	0.48	0.5	0.53	dB	0.307
FMCA100235-24	24 inch	Insertion Loss (Typ.)	0.47	0.5	0.55	0.59	0.66	dB	0.394
FMCA100235-36	36 inch	Insertion Loss (Typ.)	0.51	0.55	0.62	0.69	0.79	dB	0.481
FMCA100235-60	60 inch	Insertion Loss (Typ.)	0.58	0.65	0.76	0.87	1.05	dB	0.655
FMCA100235-300	300 inch	Insertion Loss (Typ.)	1.28	1.65	2.2	2.75	3.65	dB	2.395

The insertion loss data for the base model does not include loss due to the connectors. Each length includes insertion loss due to the connectors.

Loss due to Connector 1:	0.2 dB
Loss due to Connector 2:	0.2 dB
Base Weight:	0.307 pounds
Additional Weight per Inch:	0.00725 pounds

Mechanical Specifications

Cable Assembly

Width/Diameter	0.5 in [12.7 mm]
Weight	0.307 lbs [139.25 g]

Cable

Cable Type	LMR-400-UF
Impedance	50 Ohms
Inner Conductor Type	Stranded
Inner Conductor Material and Plating	Copper
Dielectric Type	PE (F)
Number of Shields	2
Shield Layer 1	Aluminum Tape
Shield Layer 2	Tinned Copper Braid
Jacket Material	TPE, Black
Jacket Diameter	0.405 in [10.29 mm]
One Time Minimum Bend Radius	1 in [25.4 mm]
Repeated Minimum Bend Radius	4 in [101.6 mm]
Bending Moment	0.38 lbs-ft [0.52 N-m]
Flat Plate Crush	20 lbs/in [0.36 Kg/mm]
Tensile Strength	160 lbs [72.57 Kg]

Low Loss RA TNC Male to RA TNC Male Cable
LMR-400-UF Coax with Times Microwave
Components, 180 Degree Clocking



FMCA100235

Connectors

Description	Connector 1	Connector 2
Type	TNC Male Right Angle	TNC Male Right Angle
Impedance	50 Ohms	50 Ohms
Configuration	Right Angle	Right Angle
Mating Cycles	500	500
Contact Material and Plating	Brass, Gold	Brass, Silver
Contact Plating Specification	50 µin	
Dielectric Type	Teflon	PTFE
Body Material and Plating	Brass, Tri-metal	Brass, Silver
Body Plating Specification	80 µin	
Coupling Nut Material and Plating	Brass, Tri-Metal	Brass, Silver
Coupling Nut Plating Specification	80 µin	
Hex Size	15.8 mm	15.8 mm
Torque	15 in-lbs 1.7 Nm	15 in-lbs 1.7 Nm
Seal Gasket Material	Silicone	Silicone

Environmental Specifications

Operating Range Temperature -40 to +85 deg C

Compliance Certifications (see [product page](#) for current document)

Plotted and Other Data

Notes:

Low Loss RA TNC Male to RA TNC Male Cable LMR-400-UF Coax with Times Microwave Components, 180 Degree Clocking



FMCA100235

Typical Performance Data

How to Order

Part Number Configuration:

FMCA100235

- xx

uu

Unit of Measure:
cm = Centimeters
<blank> = Inches
Length
Base Number

Example: FMCA100235-12 = 12 inches long cable
FMCA100235-100cm = 100 cm long cable

Low Loss RA TNC Male to RA TNC Male Cable LMR-400-UF Coax with Times Microwave Components, 180 Degree Clocking from Fairview Microwave is in-stock and available to ship same-day. All of our RF/microwave products are available off-the-shelf from our ISO 9001:2008 certified facilities in Lewisville, Texas. Fairview Microwave is RF on-demand.

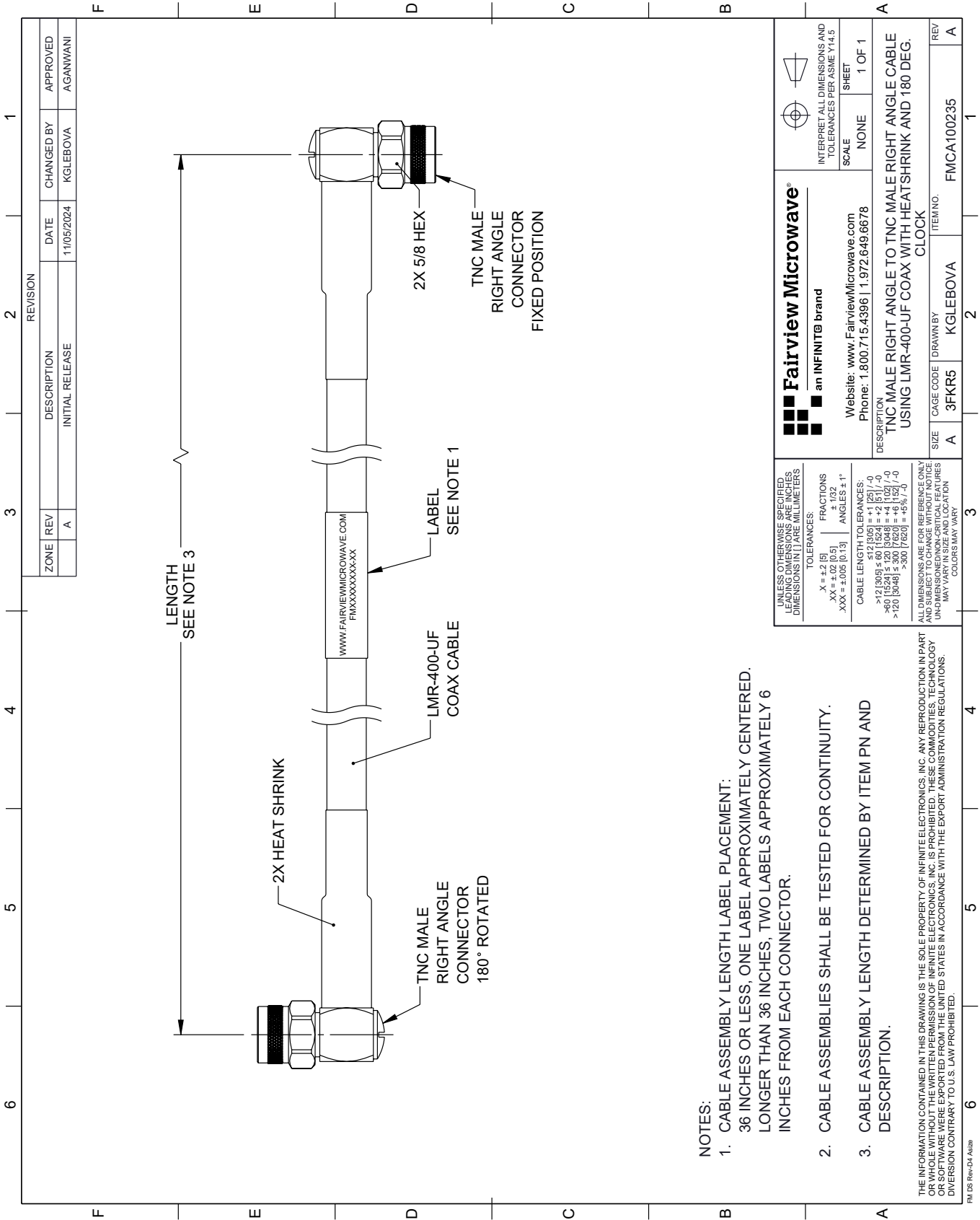
For additional information on this product, please click the following link: [Low Loss RA TNC Male to RA TNC Male Cable LMR-400-UF Coax with Times Microwave Components, 180 Degree Clocking FMCA100235](https://www.fairviewmicrowave.com/low-loss-ra-tnc-male-to-ra-tnc-male-cable-lmr-400-uf-coax-with-times-microwave-components-180-degree-clocking-fmca100235)

URL: <https://www.fairviewmicrowave.com/low-loss-ra-tnc-male-to-ra-tnc-male-cable-lmr-400-uf-coax-with-times-microwave-components-180-degree-clocking-fmca100235-p.aspx>

The information contained within this document is accurate to the best of our knowledge and representative of the part described herein. It may be necessary to make modifications to the part and/or the documentation of the part in order to implement improvements. Fairview Microwave reserves the right to make such changes as required. Unless otherwise stated, all specifications are nominal. Fairview Microwave does not make any representation or warranty regarding the suitability of the part described herein for any particular purpose, and Fairview Microwave does not assume liability arising out of the use of any part or document.

FMCA100235 CAD Drawing

Low Loss RA TNC Male to RA TNC Male Cable LMR-400-UF Coax with Times Microwave Components, 180 Degree Clocking



UNLESS OTHERWISE SPECIFIED, LEADING DIMENSIONS ARE IN INCHES, TRAILING DIMENSIONS ARE IN MILLIMETERS		TOLERANCES:		FRACTIONS		ANGLES	
.X = +.2 / -0		.XX = +.02 / -0		.XXX = +.005 / -0		.X = +.2 / -0	
.XX = +.02 / -0		.XXX = +.005 / -0		.X = +.2 / -0		.XX = +.02 / -0	
.XXX = +.005 / -0		.X = +.2 / -0		.XX = +.02 / -0		.XXX = +.005 / -0	
CABLE LENGTH TOLERANCES:		>12 [3048] ≤ 60 [1524] = +2 [51] / -0		>60 [1524] ≤ 120 [3048] = +4 [102] / -0		>120 [3048] ≤ 300 [7620] = +6 [152] / -0	
ALL DIMENSIONS ARE FOR REFERENCE ONLY. UNLESS OTHERWISE SPECIFIED, DIMENSIONS MAY VARY IN SIZE AND LOCATION. COLORS MAY VARY.		UNLESS OTHERWISE SPECIFIED, LEADING DIMENSIONS ARE IN INCHES, TRAILING DIMENSIONS ARE IN MILLIMETERS		TOLERANCES:		FRACTIONS	
.X = +.2 / -0		.XX = +.02 / -0		.XXX = +.005 / -0		.X = +.2 / -0	
.XX = +.02 / -0		.XXX = +.005 / -0		.X = +.2 / -0		.XX = +.02 / -0	
.XXX = +.005 / -0		.X = +.2 / -0		.XX = +.02 / -0		.XXX = +.005 / -0	
CABLE LENGTH TOLERANCES:		>12 [3048] ≤ 60 [1524] = +2 [51] / -0		>60 [1524] ≤ 120 [3048] = +4 [102] / -0		>120 [3048] ≤ 300 [7620] = +6 [152] / -0	
ALL DIMENSIONS ARE FOR REFERENCE ONLY. UNLESS OTHERWISE SPECIFIED, DIMENSIONS MAY VARY IN SIZE AND LOCATION. COLORS MAY VARY.		UNLESS OTHERWISE SPECIFIED, LEADING DIMENSIONS ARE IN INCHES, TRAILING DIMENSIONS ARE IN MILLIMETERS		TOLERANCES:		FRACTIONS	
.X = +.2 / -0		.XX = +.02 / -0		.XXX = +.005 / -0		.X = +.2 / -0	
.XX = +.02 / -0		.XXX = +.005 / -0		.X = +.2 / -0		.XX = +.02 / -0	
.XXX = +.005 / -0		.X = +.2 / -0		.XX = +.02 / -0		.XXX = +.005 / -0	
CABLE LENGTH TOLERANCES:		>12 [3048] ≤ 60 [1524] = +2 [51] / -0		>60 [1524] ≤ 120 [3048] = +4 [102] / -0		>120 [3048] ≤ 300 [7620] = +6 [152] / -0	
ALL DIMENSIONS ARE FOR REFERENCE ONLY. UNLESS OTHERWISE SPECIFIED, DIMENSIONS MAY VARY IN SIZE AND LOCATION. COLORS MAY VARY.		UNLESS OTHERWISE SPECIFIED, LEADING DIMENSIONS ARE IN INCHES, TRAILING DIMENSIONS ARE IN MILLIMETERS		TOLERANCES:		FRACTIONS	
.X = +.2 / -0		.XX = +.02 / -0		.XXX = +.005 / -0		.X = +.2 / -0	
.XX = +.02 / -0		.XXX = +.005 / -0		.X = +.2 / -0		.XX = +.02 / -0	
.XXX = +.005 / -0		.X = +.2 / -0		.XX = +.02 / -0		.XXX = +.005 / -0	
CABLE LENGTH TOLERANCES:		>12 [3048] ≤ 60 [1524] = +2 [51] / -0		>60 [1524] ≤ 120 [3048] = +4 [102] / -0		>120 [3048] ≤ 300 [7620] = +6 [152] / -0	
ALL DIMENSIONS ARE FOR REFERENCE ONLY. UNLESS OTHERWISE SPECIFIED, DIMENSIONS MAY VARY IN SIZE AND LOCATION. COLORS MAY VARY.		UNLESS OTHERWISE SPECIFIED, LEADING DIMENSIONS ARE IN INCHES, TRAILING DIMENSIONS ARE IN MILLIMETERS		TOLERANCES:		FRACTIONS	
.X = +.2 / -0		.XX = +.02 / -0		.XXX = +.005 / -0		.X = +.2 / -0	
.XX = +.02 / -0		.XXX = +.005 / -0		.X = +.2 / -0		.XX = +.02 / -0	
.XXX = +.005 / -0		.X = +.2 / -0		.XX = +.02 / -0		.XXX = +.005 / -0	
CABLE LENGTH TOLERANCES:		>12 [3048] ≤ 60 [1524] = +2 [51] / -0		>60 [1524] ≤ 120 [3048] = +4 [102] / -0		>120 [3048] ≤ 300 [7620] = +6 [152] / -0	
ALL DIMENSIONS ARE FOR REFERENCE ONLY. UNLESS OTHERWISE SPECIFIED, DIMENSIONS MAY VARY IN SIZE AND LOCATION. COLORS MAY VARY.		UNLESS OTHERWISE SPECIFIED, LEADING DIMENSIONS ARE IN INCHES, TRAILING DIMENSIONS ARE IN MILLIMETERS		TOLERANCES:		FRACTIONS	
.X = +.2 / -0		.XX = +.02 / -0		.XXX = +.005 / -0		.X = +.2 / -0	
.XX = +.02 / -0		.XXX = +.005 / -0		.X = +.2 / -0		.XX = +.02 / -0	
.XXX = +.005 / -0		.X = +.2 / -0		.XX = +.02 / -0		.XXX = +.005 / -0	
CABLE LENGTH TOLERANCES:		>12 [3048] ≤ 60 [1524] = +2 [51] / -0		>60 [1524] ≤ 120 [3048] = +4 [102] / -0		>120 [3048] ≤ 300 [7620] = +6 [152] / -0	
ALL DIMENSIONS ARE FOR REFERENCE ONLY. UNLESS OTHERWISE SPECIFIED, DIMENSIONS MAY VARY IN SIZE AND LOCATION. COLORS MAY VARY.		UNLESS OTHERWISE SPECIFIED, LEADING DIMENSIONS ARE IN INCHES, TRAILING DIMENSIONS ARE IN MILLIMETERS		TOLERANCES:		FRACTIONS	
.X = +.2 / -0		.XX = +.02 / -0		.XXX = +.005 / -0		.X = +.2 / -0	
.XX = +.02 / -0		.XXX = +.005 / -0		.X = +.2 / -0		.XX = +.02 / -0	
.XXX = +.005 / -0		.X = +.2 / -0		.XX = +.02 / -0		.XXX = +.005 / -0	
CABLE LENGTH TOLERANCES:		>12 [3048] ≤ 60 [1524] = +2 [51] / -0		>60 [1524] ≤ 120 [3048] = +4 [102] / -0		>120 [3048] ≤ 300 [7620] = +6 [152] / -0	
ALL DIMENSIONS ARE FOR REFERENCE ONLY. UNLESS OTHERWISE SPECIFIED, DIMENSIONS MAY VARY IN SIZE AND LOCATION. COLORS MAY VARY.		UNLESS OTHERWISE SPECIFIED, LEADING DIMENSIONS ARE IN INCHES, TRAILING DIMENSIONS ARE IN MILLIMETERS		TOLERANCES:		FRACTIONS	
.X = +.2 / -0		.XX = +.02 / -0		.XXX = +.005 / -0		.X = +.2 / -0	
.XX = +.02 / -0		.XXX = +.005 / -0		.X = +.2 / -0		.XX = +.02 / -0	
.XXX = +.005 / -0		.X = +.2 / -0		.XX = +.02 / -0		.XXX = +.005 / -0	
CABLE LENGTH TOLERANCES:		>12 [3048] ≤ 60 [1524] = +2 [51] / -0		>60 [1524] ≤ 120 [3048] = +4 [102] / -0		>120 [3048] ≤ 300 [7620] = +6 [152] / -0	
ALL DIMENSIONS ARE FOR REFERENCE ONLY. UNLESS OTHERWISE SPECIFIED, DIMENSIONS MAY VARY IN SIZE AND LOCATION. COLORS MAY VARY.		UNLESS OTHERWISE SPECIFIED, LEADING DIMENSIONS ARE IN INCHES, TRAILING DIMENSIONS ARE IN MILLIMETERS		TOLERANCES:		FRACTIONS	
.X = +.2 / -0		.XX = +.02 / -0		.XXX = +.005 / -0		.X = +.2 / -0	
.XX = +.02 / -0		.XXX = +.005 / -0		.X = +.2 / -0		.XX = +.02 / -0	
.XXX = +.005 / -0		.X = +.2 / -0		.XX = +.02 / -0		.XXX = +.005 / -0	
CABLE LENGTH TOLERANCES:		>12 [3048] ≤ 60 [1524] = +2 [51] / -0		>60 [1524] ≤ 120 [3048] = +4 [102] / -0		>120 [3048] ≤ 300 [7620] = +6 [152] / -0	
ALL DIMENSIONS ARE FOR REFERENCE ONLY. UNLESS OTHERWISE SPECIFIED, DIMENSIONS MAY VARY IN SIZE AND LOCATION. COLORS MAY VARY.		UNLESS OTHERWISE SPECIFIED, LEADING DIMENSIONS ARE IN INCHES, TRAILING DIMENSIONS ARE IN MILLIMETERS		TOLERANCES:		FRACTIONS	
.X = +.2 / -0		.XX = +.02 / -0		.XXX = +.005 / -0		.X = +.2 / -0	
.XX = +.02 / -0		.XXX = +.005 / -0		.X = +.2 / -0		.XX = +.02 / -0	
.XXX = +.005 / -0		.X = +.2 / -0		.XX = +.02 / -0		.XXX = +.005 / -0	
CABLE LENGTH TOLERANCES:		>12 [3048] ≤ 60 [1524] = +2 [51] / -0		>60 [1524] ≤ 120 [3048] = +4 [102] / -0		>120 [3048] ≤ 300 [7620] = +6 [152] / -0	
ALL DIMENSIONS ARE FOR REFERENCE ONLY. UNLESS OTHERWISE SPECIFIED, DIMENSIONS MAY VARY IN SIZE AND LOCATION. COLORS MAY VARY.		UNLESS OTHERWISE SPECIFIED, LEADING DIMENSIONS ARE IN INCHES, TRAILING DIMENSIONS ARE IN MILLIMETERS		TOLERANCES:		FRACTIONS	
.X = +.2 / -0		.XX = +.02 / -0		.XXX = +.005 / -0		.X = +.2 / -0	
.XX = +.02 / -0		.XXX = +.005 / -0		.X = +.2 / -0		.XX = +.02 / -0	
.XXX = +.005 / -0		.X = +.2 / -0		.XX = +.02 / -0		.XXX = +.005 / -0	
CABLE LENGTH TOLERANCES:		>12 [3048] ≤ 60 [1524] = +2 [51] / -0		>60 [1524] ≤ 120 [3048] = +4 [102] / -0		>120 [3048] ≤ 300 [7620] = +6 [152] / -0	
ALL DIMENSIONS ARE FOR REFERENCE ONLY. UNLESS OTHERWISE SPECIFIED, DIMENSIONS MAY VARY IN SIZE AND LOCATION. COLORS MAY VARY.		UNLESS OTHERWISE SPECIFIED, LEADING DIMENSIONS ARE IN INCHES, TRAILING DIMENSIONS ARE IN MILLIMETERS		TOLERANCES:		FRACTIONS	
.X = +.2 / -0		.XX = +.02 / -0		.XXX = +.005 / -0		.X = +.2 / -0	
.XX = +.02 / -0		.XXX = +.005 / -0		.X = +.2 / -0		.XX = +.02 / -0	
.XXX = +.005 / -0		.X = +.2 / -0		.XX = +.02 / -0		.XXX = +.005 / -0	
CABLE LENGTH TOLERANCES:		>12 [3048] ≤ 60 [1524] = +2 [51] / -0		>60 [1524] ≤ 120 [3048] = +4 [102] / -0		>120 [3048] ≤ 300 [7620] = +6 [152] / -0	
ALL DIMENSIONS ARE FOR REFERENCE ONLY. UNLESS OTHERWISE SPECIFIED, DIMENSIONS MAY VARY IN SIZE AND LOCATION. COLORS MAY VARY.		UNLESS OTHERWISE SPECIFIED, LEADING DIMENSIONS ARE IN INCHES, TRAILING DIMENSIONS ARE IN MILLIMETERS		TOLERANCES:		FRACTIONS	
.X = +.2 / -0		.XX = +.02 / -0		.XXX = +.005 / -0		.X = +.2 / -0	
.XX = +.02 / -0		.XXX = +.005 / -0		.X = +.2 / -0		.XX = +.02 / -0	
.XXX = +.005 / -0		.X = +.2 / -0		.XX = +.02 / -0		.XXX = +.005 / -0	
CABLE LENGTH TOLERANCES:		>12 [3048] ≤ 60 [1524] = +2 [51] / -0		>60 [1524] ≤ 120 [3048] = +4 [102] / -0		>120 [3048] ≤ 300 [7620] = +6 [152] / -0	
ALL DIMENSIONS ARE FOR REFERENCE ONLY. UNLESS OTHERWISE SPECIFIED, DIMENSIONS MAY VARY IN SIZE AND LOCATION. COLORS MAY VARY.		UNLESS OTHERWISE SPECIFIED, LEADING DIMENSIONS ARE IN INCHES, TRAILING DIMENSIONS ARE IN MILLIMETERS		TOLERANCES:		FRACTIONS	
.X = +.2 / -0		.XX = +.02 / -0		.XXX = +.005 / -0		.X = +.2 / -0	
.XX = +.02 / -0		.XXX = +.005 / -0		.X = +.2 / -0		.XX = +.02 / -0	
.XXX = +.005 / -0		.X = +.2 / -0		.XX = +.02 / -0		.XXX = +.005 / -0	
CABLE LENGTH TOLERANCES:		>12 [3048] ≤ 60 [1524] = +2 [51] / -0		>60 [1524] ≤ 120 [3048] = +4 [102] / -0		>120 [3048] ≤ 300 [7620] = +6 [152] / -0	
ALL DIMENSIONS ARE FOR REFERENCE ONLY. UNLESS OTHERWISE SPECIFIED, DIMENSIONS MAY VARY IN SIZE AND LOCATION. COLORS MAY VARY.		UNLESS OTHERWISE SPECIFIED, LEADING DIMENSIONS ARE IN INCHES, TRAILING DIMENSIONS ARE IN MILLIMETERS		TOLERANCES:		FRACTIONS	
.X = +.2 / -0		.XX = +.02 / -0		.XXX = +.005 / -0		.X = +.2 / -0	
.XX = +.02 / -0		.XXX = +.005 / -0		.X = +.2 / -0		.XX = +.02 / -0	
.XXX = +.005 / -0		.X = +.2 / -0		.XX = +.02 / -0		.XXX = +.005 / -0	
CABLE LENGTH TOLERANCES:		>12 [3048] ≤ 60 [1524] = +2 [51] / -0		>60 [1524] ≤ 120 [3048] = +4 [102] / -0		>120 [3048] ≤ 300 [7620] = +6 [152] / -0	
ALL DIMENSIONS ARE FOR REFERENCE ONLY. UNLESS OTHERWISE SPECIFIED, DIMENSIONS MAY VARY IN SIZE AND LOCATION. COLORS MAY VARY.		UNLESS OTHERWISE SPECIFIED, LEADING DIMENSIONS ARE IN INCHES, TRAILING DIMENSIONS ARE IN MILLIMETERS		TOLERANCES:		FRACTIONS	
.X = +.2 / -0		.XX = +.02 / -0		.XXX = +.005 / -0		.X = +.2 / -0	
.XX = +.02 / -0		.XXX = +.005 / -0		.X = +.2 / -0		.XX = +.02 / -0	
.XXX = +.005 / -0		.X = +.2 / -0		.XX = +.02 / -0		.XXX = +.005 / -0	
CABLE LENGTH TOLERANCES:		>12 [3048] ≤ 60 [1524] = +2 [51] / -0		>60 [1524] ≤ 120 [3048] = +4 [102] / -0		>120 [3048] ≤ 300 [7620] = +6 [152] / -0	
ALL DIMENSIONS ARE FOR REFERENCE ONLY. UNLESS OTHERWISE SPECIFIED, DIMENSIONS MAY VARY IN SIZE AND LOCATION. COLORS MAY VARY.		UNLESS OTHERWISE SPECIFIED, LEADING DIMENSIONS ARE IN INCHES, TRAILING DIMENSIONS ARE IN MILLIMETERS		TOLERANCES:		FRACTIONS	
.X = +.2 / -0		.XX = +.02 / -0		.XXX = +.005 / -0		.X = +.2 / -0	
.XX = +.02 / -0		.XXX = +.005 / -0		.X = +.2 / -0		.XX = +.02 / -0	
.XXX = +.005 / -0		.X = +.2 / -0		.XX = +.02 / -0		.XXX = +.005 / -0	
CABLE LENGTH TOLERANCES:		>12 [3048] ≤ 60 [1524] = +2 [51] / -0		>60 [1524] ≤ 120 [3048] = +4 [102] / -0		>120 [3048] ≤ 300 [7620] = +6 [152] / -0	
ALL DIMENSIONS ARE FOR REFERENCE ONLY. UNLESS OTHERWISE SPECIFIED, DIMENSIONS MAY VARY IN SIZE AND LOCATION. COLORS MAY VARY.		UNLESS OTHERWISE SPECIFIED, LEADING DIMENSIONS ARE IN INCHES, TRAILING DIMENSIONS ARE IN MILLIMETERS		TOLERANCES:		FRACTIONS	
.X = +.2 / -0		.XX = +.02 / -0		.XXX = +.005 / -0		.X = +.2 / -0	
.XX = +.02 / -0		.XXX = +.005 / -0		.X = +.2 / -0		.XX = +.02 / -0	
.XXX = +.005 / -0		.X = +.2 / -0		.XX = +.02 / -0		.XXX = +.005 / -0	
CABLE LENGTH TOLERANCES:		>12 [3048] ≤ 60 [1524] = +2 [51] / -0		>60 [1524] ≤ 120 [3048] = +4 [102] / -0		>120 [3048] ≤ 300 [7620] = +6 [152] / -0	
ALL DIMENSIONS ARE FOR REFERENCE ONLY. UNLESS OTHERWISE SPECIFIED, DIMENSIONS MAY VARY IN SIZE AND LOCATION. COLORS MAY VARY.		UNLESS OTHERWISE SPECIFIED, LEADING DIMENSIONS ARE IN INCHES, TRAILING DIMENSIONS ARE IN MILLIMETERS		TOLERANCES:		FRACTIONS	
.X = +.2 / -0		.XX = +.02 / -0		.XXX = +.005 / -0		.X = +.2 / -0	
.XX = +.02 / -0		.XXX = +.005 / -0		.X = +.2 / -0		.XX = +.02 / -0	
.XXX = +.005 / -0		.X = +.2 / -0		.XX = +.02 / -0		.XXX = +.005 / -0	
CABLE LENGTH TOLERANCES:		>12 [3048] ≤ 60 [1524] = +2 [51] / -0		>60 [1524] ≤ 120 [3048] = +4 [102] / -0		>120 [3048] ≤ 300 [7620] = +6 [152] / -0	
ALL DIMENSIONS ARE FOR REFERENCE ONLY. UNLESS OTHERWISE SPECIFIED, DIMENSIONS MAY VARY IN SIZE AND LOCATION. COLORS MAY VARY.		UNLESS OTHERWISE SPECIFIED, LEADING DIMENSIONS ARE IN INCHES, TRAILING DIMENSIONS ARE IN MILLIMETERS		TOLERANCES:		FRACTIONS	
.X = +.2 / -0		.XX = +.02 / -0		.XXX = +.005 / -0		.X = +.2 / -0	
.XX = +.02 / -0		.XXX = +.005 / -0		.X = +.2 / -0		.XX = +.02 / -0	
.XXX = +.005 / -0		.X = +.2 / -0		.XX = +.02 / -0		.XXX = +.005 / -0	
CABLE LENGTH TOLERANCES:		>12 [3048] ≤ 60 [1524] = +2 [51] / -0		>60 [1524] ≤ 120 [3048] = +4 [102] / -0		>120 [3048] ≤ 300 [7620] = +6 [152] / -0	
ALL DIMENSIONS ARE FOR REFERENCE ONLY. UNLESS OTHERWISE SPECIFIED, DIMENSIONS MAY VARY IN SIZE AND LOCATION. COLORS MAY VARY.		UNLESS OTHERWISE SPECIFIED, LEADING DIMENSIONS ARE IN INCHES, TRAILING DIMENSIONS ARE IN MILLIMETERS		TOLERANCES:		FRACTIONS	
.X = +.2 / -0		.XX = +.02 / -0		.XXX = +.005 / -0		.X = +.2 / -0	
.XX = +.02 / -0		.XXX = +.005 / -0		.X = +.2 / -0		.XX = +.02 / -0	
.XXX = +.005 / -0		.X = +.2 / -0		.XX = +.02 / -0		.XXX = +.005 / -0	
CABLE LENGTH TOLERANCES:		>12 [3048] ≤ 60 [1524] = +2 [51] / -0		>60 [1524] ≤ 120 [3048] = +4 [102] / -0		>120 [3048] ≤ 300 [7620] = +6 [152] / -0	
ALL DIMENSIONS ARE FOR REFERENCE ONLY. UNLESS OTHERWISE SPECIFIED, DIMENSIONS MAY VARY IN SIZE AND LOCATION. COLORS MAY VARY.		UNLESS OTHERWISE SPECIFIED, LEADING DIMENSIONS ARE IN INCHES, TRAILING DIMENSIONS ARE IN MILLIMETERS		TOLERANCES:		FRACTIONS	
.X = +.2 / -0		.XX = +.02 / -0		.XXX = +.005 / -0		.X = +.2 / -0	
.XX = +.02 / -0		.XXX = +.005 / -0		.X = +.2 / -0		.XX = +.02 / -0	
.XXX = +.005 / -0		.X = +.2 / -0		.XX = +.02 / -0		.XXX = +.005 / -0	
CABLE LENGTH TOLERANCES:		>12 [3048] ≤ 60 [1524] = +2 [51] / -0		>60 [1524] ≤ 120 [3048] = +4 [102] / -0		>120 [3048] ≤ 300 [7620] = +6 [152] / -0	
ALL DIMENSIONS ARE FOR REFERENCE ONLY. UNLESS OTHERWISE SPECIFIED, DIMENSIONS MAY VARY IN SIZE AND LOCATION. COLORS MAY VARY.		UNLESS OTHERWISE SPECIFIED, LEADING DIMENSIONS ARE IN INCHES, TRAILING DIMENSIONS ARE IN MILLIMETERS		TOLERANCES:		FRACTIONS	
.X = +.2 / -0		.XX = +.02 / -0		.XXX = +.005 / -0		.X = +.2 / -0	
.XX = +.02 / -0		.XXX = +.005 / -0		.X = +.2 / -0		.XX = +.02 / -0	
.XXX = +.005 / -0		.X = +.2 / -0		.XX = +.02 / -0		.XXX = +.005 / -0	
CABLE LENGTH TOLERANCES:		>12 [3048] ≤ 60 [1524] = +2 [51] / -0		>60 [1524] ≤ 120 [3048] = +4 [102] / -0		>120 [3048] ≤ 300 [7620] = +6 [152] / -0	
ALL DIMENSIONS ARE FOR REFERENCE ONLY. UNLESS OTHERWISE SPECIFIED, DIMENSIONS MAY VARY IN SIZE AND LOCATION. COLORS MAY VARY.		UNLESS OTHERWISE SPECIFIED, LEADING DIMENSIONS ARE IN INCHES, TRAILING DIMENSIONS ARE IN MILLIMETERS		TOLERANCES:		FRACTIONS	
.X = +.2 / -0		.XX = +.02 / -0		.XXX = +.005 / -0		.X = +.2 / -0	
.XX = +.02 / -0		.XXX = +.005 / -0		.X = +.2 / -0		.XX = +.02 / -0	
.XXX = +.005 / -0		.X = +.2 / -0		.XX = +.02 / -0		.XXX = +.005 / -0	
CABLE LENGTH TOLERANCES:		>12 [3048] ≤ 60 [1524] = +2 [51] / -0		>60 [1524] ≤ 120 [3048] = +4 [102] / -0		>120 [3048] ≤ 300 [7620] = +6 [152] / -0	
ALL DIMENSIONS ARE FOR REFERENCE ONLY. UNLESS OTHERWISE SPECIFIED, DIMENSIONS MAY VARY IN SIZE AND LOCATION. COLORS MAY VARY.		UNLESS OTHERWISE SPECIFIED, LEADING DIMENSIONS ARE IN INCHES, TRAILING DIMENSIONS ARE IN MILLIMETERS		TOLERANCES:		FRACTIONS	
.X = +.2 / -0		.XX = +.02 / -0		.XXX = +.005 / -0		.X = +.2 / -0	
.XX = +.02 / -0		.XXX = +.005 / -0		.X = +.2 / -0		.XX = +.02 / -0	
.XXX = +.005 / -0		.X = +.2 / -0		.XX = +.02 / -0		.XXX = +.005 / -0	
CABLE LENGTH TOLERANCES:		>12 [3048] ≤ 60 [1524] = +2 [51] / -0		>60 [1524] ≤ 120 [3048] = +4 [102] / -0		>120 [3048] ≤ 300 [7620] = +6 [152] / -0	
ALL DIMENSIONS ARE FOR REFERENCE ONLY. UNLESS OTHERWISE SPECIFIED, DIMENSIONS MAY VARY IN SIZE AND LOCATION. COLORS MAY VARY.		UNLESS OTHERWISE SPECIFIED, LEADING DIMENSIONS ARE IN INCHES, TRAILING DIMENSIONS ARE IN MILLIMETERS		TOLERANCES:		FRACTIONS	
.X = +.2 / -0		.XX = +.02 / -0		.XXX = +.005 / -0		.X = +.2 / -0	
.XX = +.02 / -0		.XXX = +.005 / -0		.X = +.2 / -0		.XX = +.02 / -0	
.XXX = +.005 / -0		.X = +.2 / -0		.XX = +.02 / -0		.XXX = +.005 / -0	
CABLE LENGTH TOLERANCES:		>12 [3048] ≤ 60 [1524] = +2 [51] / -0		>60 [1524] ≤ 120 [3048] = +4 [102] / -0		>120 [3048] ≤ 300 [7620] = +6 [152] / -0	
ALL DIMENSIONS ARE FOR REFERENCE ONLY. UNLESS OTHERWISE SPECIFIED, DIMENSIONS MAY VARY IN SIZE AND LOCATION. COLORS MAY VARY.		UNLESS OTHERWISE SPECIFIED, LEADING DIMENSIONS ARE IN INCHES, TRAILING DIMENSIONS ARE IN MILLIMETERS		TOLERANCES:		FRACTIONS	
.X = +.2 / -0		.XX = +.02 / -0		.XXX = +.005 / -0		.X = +.2 / -0	
.XX = +.02 / -0		.XXX = +.005 / -0		.X = +.2 / -0		.XX = +.02 / -0	
.XXX = +.005 / -0		.X = +.2 / -0		.XX = +.02 / -0		.XXX = +.005 / -0	
CABLE LENGTH TOLERANCES:		>12 [3048] ≤ 60 [1524] = +2 [51] / -0		>60 [1524] ≤ 12			