

RA SMA Male to N Female Bulkhead Cable RG-400 Coax

FMCA10021

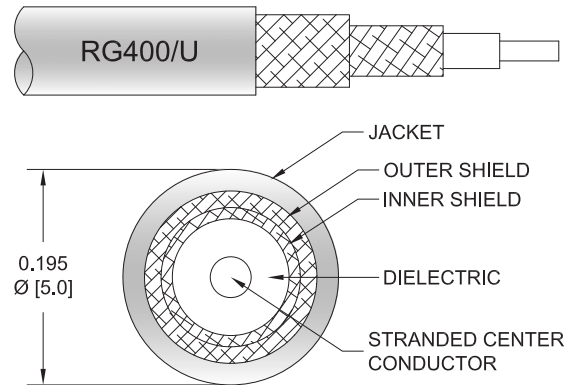


Configuration

- Connector 1: SMA Male Right Angle
- Connector 2: N Female Bulkhead
- Cable Type: RG-400
- Coax Flex Type: Flexible

Features

- Max Frequency 6 GHz
- 70% Phase Velocity
- Double Shielded
- FEP Jacket



Applications

- General Purpose
- Laboratory Use

Description

The RA SMA male to type N female bulkhead cable using RG400 coax, part number FMCA10021, from Fairview Microwave is in-stock and ships same day. This Fairview SMA to type N cable assembly has a male to female gender configuration with 50 ohm flexible RG-400 coax. Fairview Microwave's flexible RF cable assemblies are ideal for applications where tight bends and continual flexure are required. The FMCA10021 SMA male to type N female cable assembly operates to 6 GHz. The right angle SMA interface on the RG-400 cable allows for easier connections in tight spaces. Our RF cable assembly with type N bulkhead interface allows designers to create external connections on their product enclosures, and can be used in a variety of other rack mount and panel mount applications. The double shielding of this Fairview cable assembly provides excellent shielding effectiveness.

Custom versions of most RF cable assemblies can be built and shipped same day. Custom cable assembly lengths can be obtained by specifying the desired length on the web site at time of order or by contacting a sales representative. Other RF cable assembly value added services including connector orientation or clocking, heat shrink booting and labeling are also available. RF testing can also be performed to document the electrical performance of your cable assembly.

Electrical Specifications

Description	Minimum	Typical	Maximum	Units
Frequency Range	DC		6	GHz
VSWR			1.4:1	
Velocity of Propagation		70		%
Capacitance		32 [104.99]		pF/ft [pF/m]
Operating Voltage (AC)			1,900	Vrms

Specifications by Frequency

RA SMA Male to N Female Bulkhead Cable RG-400 Coax

FMCA10021



Part Number	Length	Description	F1	F2	F3	F4	Units	Weight (lbs)
		Frequency	500	1000	2500	6000	MHz	
FMCA10021	Custom Lengths Available	Insertion Loss (Typ.)	0.09	0.14	0.23	0.39	dB/ft	
			0.3	0.46	0.76	1.28	dB/m	
FMCA10021-6	6 Inch	Insertion Loss (Typ.)	0.35	0.37	0.42	0.5	dB	0.122
FMCA10021-12	12 Inch	Insertion Loss (Typ.)	0.39	0.44	0.53	0.69	dB	0.143
FMCA10021-24	24 Inch	Insertion Loss (Typ.)	0.48	0.58	0.76	1.08	dB	0.185
FMCA10021-36	36 Inch	Insertion Loss (Typ.)	0.57	0.72	0.99	1.47	dB	0.227
FMCA10021-72	72 inch	Insertion Loss (Typ.)	0.84	1.14	1.68	2.64	dB	0.353

The insertion loss data for the base model does not include loss due to the connectors. Each length includes insertion loss due to the connectors.

Loss due to Connector 1:	0.2 dB
Loss due to Connector 2:	0.1 dB
Base Weight:	0.143 pounds
Additional Weight per Inch:	0.0035 pounds

Mechanical Specifications

Cable Assembly

Weight	0.143 lbs [64.86 g]
--------	---------------------

Cable

Cable Type	RG-400
Impedance	50 Ohms
Inner Conductor Type	Stranded
Inner Conductor Material and Plating	Copper, Silver
Dielectric Type	PTFE
Number of Shields	2
Shield Layer 1	Silver Plated Copper Braid
Shield Layer 2	Silver Plated Copper Braid
Jacket Material	FEP, Tan
Jacket Diameter	0.195 in [4.95 mm]
Repeated Minimum Bend Radius	1 in [25.4 mm]

RA SMA Male to N Female Bulkhead Cable RG-400 Coax

FMCA10021



Connectors

Description	Connector 1	Connector 2
Type	SMA Male Right Angle	N Female Bulkhead
Specification	MIL-STD-348A	MIL-STD-348A
Impedance	50 Ohms	50 Ohms
Configuration	Right Angle	Straight
Contact Material and Plating	Brass, Gold	Brass, Gold
Contact Plating Specification	50 µin minimum	30 µin minimum
Dielectric Type	PTFE	PTFE
Outer Conductor Material and Plating		Brass, Nickel
Outer Conductor Plating Specification		100 µin minimum
Body Material and Plating	Brass, Gold	Brass, Nickel
Body Plating Specification	3 µin minimum	100 µin minimum
Coupling Nut Material and Plating	Brass, Gold	
Coupling Nut Plating Specification	3 µin minimum	
Hex Size	5/16 inch	

Environmental Specifications

Operating Range Temperature -55 to +165 deg C

Compliance Certifications (see [product page](#) for current document)

Plotted and Other Data

Notes:

RA SMA Male to N Female Bulkhead Cable RG-400 Coax



FMCA10021

Typical Performance Data

How to Order

Part Number Configuration: **FMCA10021** **- xx** **uu**

Unit of Measure:
cm = Centimeters
<blank> = Inches

Length

Base Number

Example: FMCA10021-12 = 12 inches long cable
FMCA10021-100cm = 100 cm long cable

RA SMA Male to N Female Bulkhead Cable RG-400 Coax from Fairview Microwave is in-stock and available to ship same-day. All of our RF/microwave products are available off-the-shelf from our ISO 9001:2008 certified facilities in Lewisville, Texas. Fairview Microwave is RF on-demand.

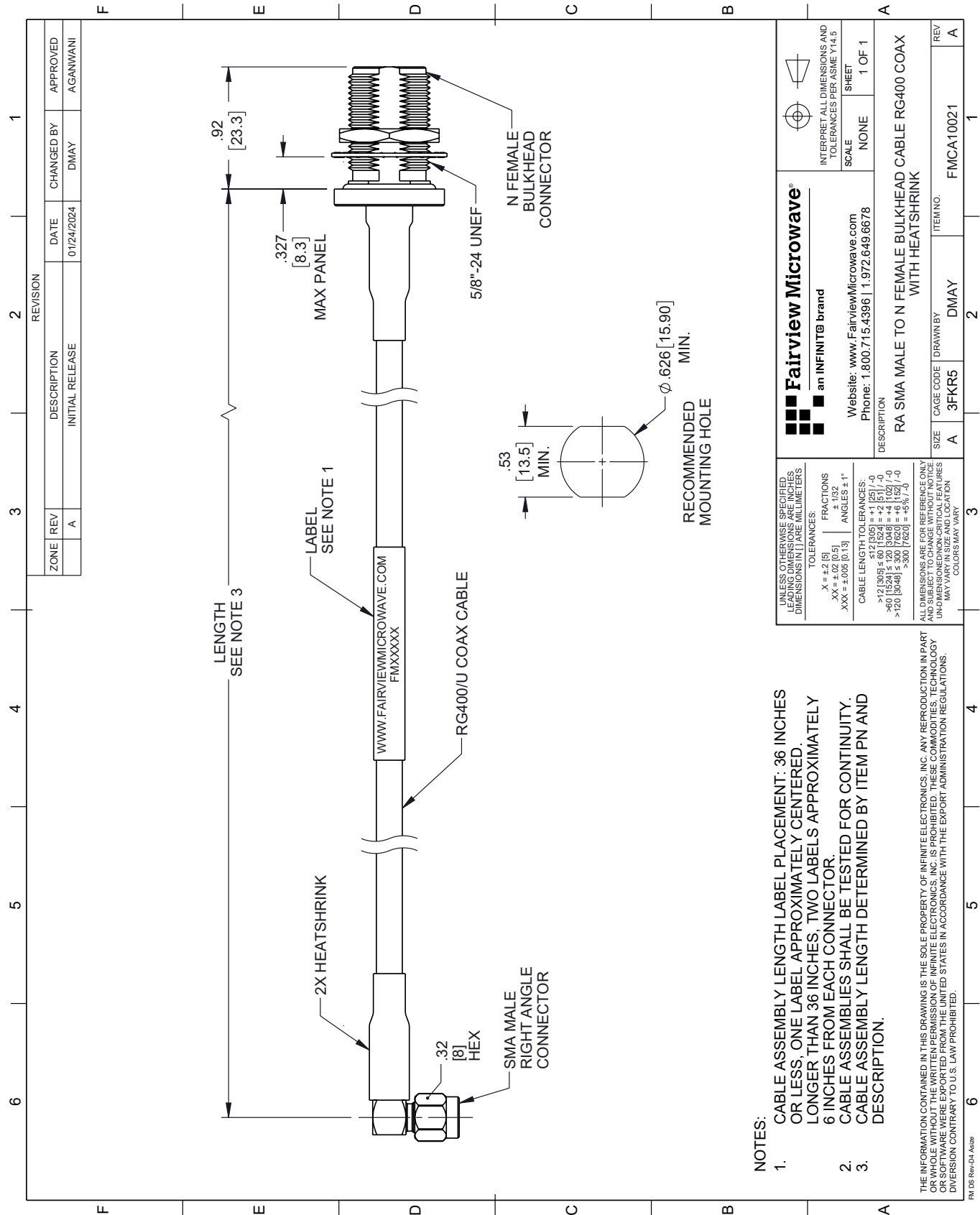
For additional information on this product, please click the following link: [RA SMA Male to N Female Bulkhead Cable RG-400 Coax FMCA10021](#)

URL: <https://www.fairviewmicrowave.com/ra-sma-male-to-n-female-bulkhead-cable-rg-400-coax-fmca10021-p.aspx>

The information contained within this document is accurate to the best of our knowledge and representative of the part described herein. It may be necessary to make modifications to the part and/or the documentation of the part in order to implement improvements. Fairview Microwave reserves the right to make such changes as required. Unless otherwise stated, all specifications are nominal. Fairview Microwave does not make any representation or warranty regarding the suitability of the part described herein for any particular purpose, and Fairview Microwave does not assume liability arising out of the use of any part or document.

FMCA10021 CAD Drawing

RA SMA Male to N Female Bulkhead Cable RG-400 Coax



- NOTES:
- 1. CABLE ASSEMBLY LENGTH LABEL PLACEMENT: 36 INCHES OR LESS; ONE LABEL APPROXIMATELY CENTERED. LONGER THAN 36 INCHES, TWO LABELS APPROXIMATELY 6 INCHES FROM EACH CONNECTOR.
 - 2. CABLE ASSEMBLIES SHALL BE TESTED FOR CONTINUITY.
 - 3. CABLE ASSEMBLY LENGTH DETERMINED BY ITEM PN AND DESCRIPTION.

THE INFORMATION CONTAINED IN THIS DRAWING IS THE SOLE PROPERTY OF INFINITE ELECTRONICS, INC. ANY REPRODUCTION IN PART OR WHOLE WITHOUT THE WRITTEN PERMISSION OF INFINITE ELECTRONICS, INC. IS PROHIBITED. THESE COMMODITIES, TECHNOLOGY OR SOFTWARE WERE EXPORTED FROM THE UNITED STATES IN ACCORDANCE WITH THE EXPORT ADMINISTRATION REGULATIONS. DIVISION CONTRARY TO U.S. LAW PROHIBITED.

FM DS Rev-D4 Addn