

2.92mm Female to 2.92mm Female Bulkhead Cable .118 Semi-Rigid Coax

FMCA100188

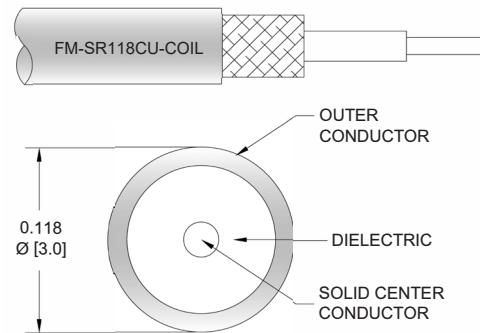


Configuration

- Connector 1: 2.92mm Female
- Connector 2: 2.92mm Female Bulkhead
- Cable Type: FM-SR118CU-COIL
- Coax Flex Type: Semi-Rigid

Features

- Max Frequency 40 GHz
- 500 Mating Cycles



Applications

- General Purpose
- Laboratory Use

Description

The 2.92mm female to 2.92mm female bulkhead cable using .118 coax, part number FMCA100188, from Fairview Microwave is in-stock and ships same day. This Fairview 2.92mm to 2.92mm cable assembly has a female to female gender configuration with 50 ohm semi-rigid FM-SR118CU-COIL coax. Fairview Microwave's semi-rigid RF cable assemblies are ideal for high performance applications and can be formed, using proper tooling, to the routing pattern required. The FMCA100188 2.92mm female to 2.92mm female cable assembly operates to 40 GHz. Our RF cable assembly with 2.92mm bulkhead interface allows designers to create external connections on their product enclosures, and can be used in a variety of other rack mount and panel mount applications.

Custom versions of most RF cable assemblies can be built and shipped same day. Custom cable assembly lengths can be obtained by specifying the desired length on the web site at time of order or by contacting a sales representative. Other RF cable assembly value added services including connector orientation or clocking, heat shrink booting and labeling are also available. RF testing can also be performed to document the electrical performance of your cable assembly.

Electrical Specifications

Description	Minimum	Typical	Maximum	Units
Frequency Range	DC		40	GHz
VSWR			1.4:1	

Specifications by Frequency

2.92mm Female to 2.92mm Female Bulkhead Cable .118 Semi-Rigid Coax



FMCA100188

Part Number	Length	Description	F1	F2	F3	F4	Units	Weight (lbs)
		Frequency	2500	5000	10000	20000	MHz	
FMCA100188	Custom Lengths Available	Insertion Loss (Typ.)	0.175	0.258	0.425	0.625	dB/ft	
			0.58	0.85	1.4	2.06	dB/m	
FMCA100188-6	6 Inch	Insertion Loss (Typ.)	0.29	0.33	0.42	0.52	dB	0.042
FMCA100188-12	12 Inch	Insertion Loss (Typ.)	0.38	0.46	0.63	0.83	dB	0.053
FMCA100188-18	18 Inch	Insertion Loss (Typ.)	0.47	0.59	0.84	1.14	dB	0.065
FMCA100188-24	24 Inch	Insertion Loss (Typ.)	0.55	0.72	1.05	1.45	dB	0.076
FMCA100188-36	36 Inch	Insertion Loss (Typ.)	0.73	0.98	1.48	2.08	dB	0.099

The insertion loss data for the base model does not include loss due to the connectors. Each length includes insertion loss due to the connectors.

Loss due to Connector 1:	0.1 dB
Loss due to Connector 2:	0.1 dB
Base Weight:	0.053 pounds
Additional Weight per Inch:	0.00188 pounds

Mechanical Specifications

Cable Assembly

Width/Diameter	0.5 in [12.7 mm]
Weight	0.053 lbs [24.04 g]

Cable

Cable Type	FM-SR118CU-COIL
Impedance	50 Ohms
Inner Conductor Type	Solid
Inner Conductor Material and Plating	Copper, Silver
Dielectric Type	PTFE (LD)
Number of Shields	1
Shield Layer 1	Copper
Jacket Material	Tan
One Time Minimum Bend Radius	0.4 in [10.16 mm]

Connectors

Description	Connector 1	Connector 2
Type	2.92mm Female	2.92mm Female Bulkhead
Impedance	50 Ohms	50 Ohms
Configuration	Straight	Straight
Mating Cycles	500	500
Contact Material and Plating	Beryllium Copper, Gold over Nickel over Copper	Beryllium Copper, Gold over Nickel over Copper
Dielectric Type	PPO	PPO
Body Material and Plating	Stainless Steel, Passivated	Stainless Steel, Passivated

2.92mm Female to 2.92mm Female Bulkhead Cable .118 Semi-Rigid Coax



FMCA100188

Environmental Specifications

Operating Range Temperature -40 to +105 deg C

Compliance Certifications (see [product page](#) for current document)

Plotted and Other Data

Notes:

Typical Performance Data

How to Order

Part Number Configuration: **FMCA100188 - xx uu**

Unit of Measure:
cm = Centimeters
<blank> = Inches

Length

Base Number

Example: FMCA100188-12 = 12 inches long cable
FMCA100188-100cm = 100 cm long cable

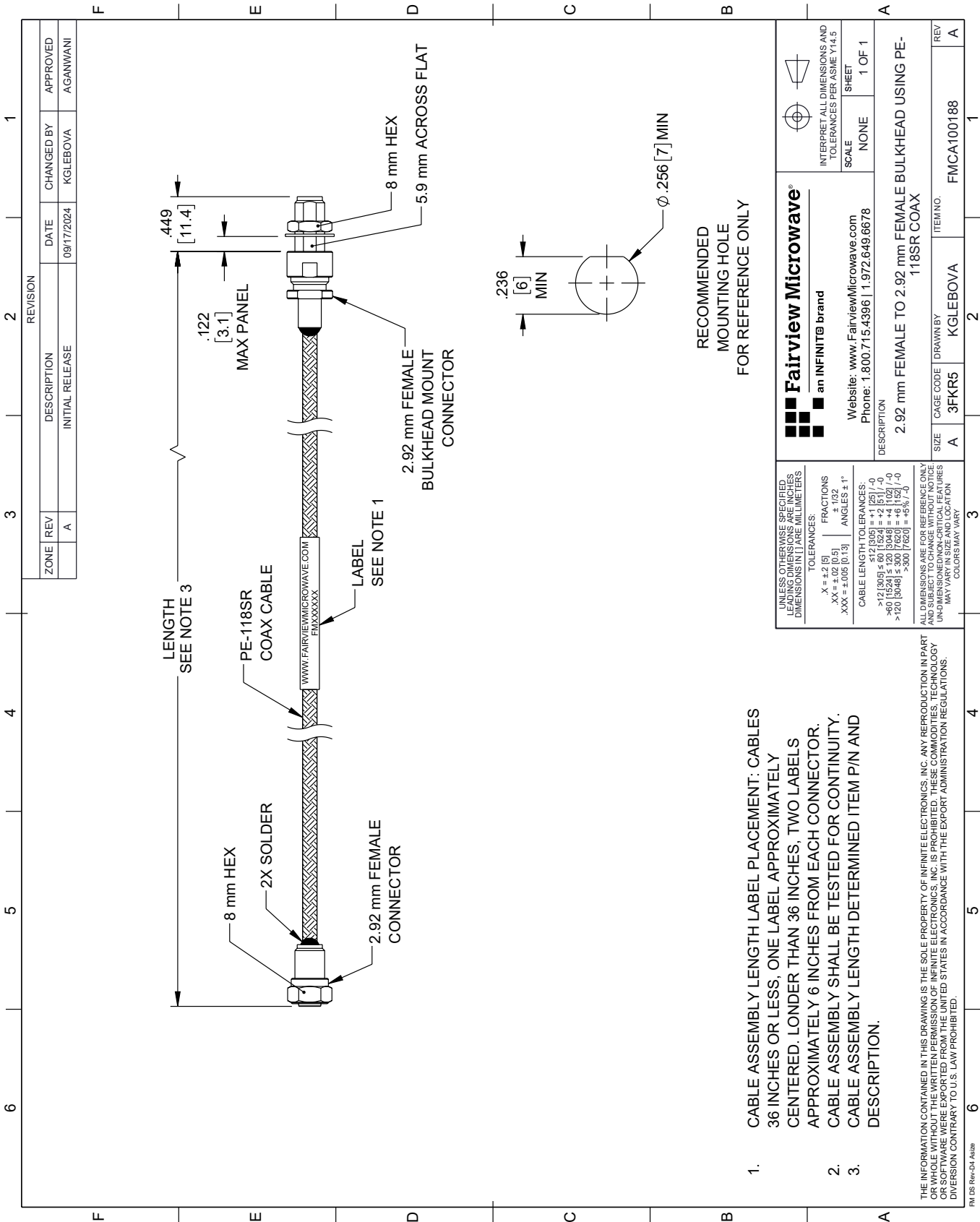
2.92mm Female to 2.92mm Female Bulkhead Cable .118 Semi-Rigid Coax from Fairview Microwave is in-stock and available to ship same-day. All of our RF/microwave products are available off-the-shelf from our ISO 9001:2008 certified facilities in Lewisville, Texas. Fairview Microwave is RF on-demand.

For additional information on this product, please click the following link: [2.92mm Female to 2.92mm Female Bulkhead Cable .118 Semi-Rigid Coax FMCA100188](#)

URL: <https://www.fairviewmicrowave.com/2.92mm-female-to-2.92mm-female-bulkhead-cable-.118-coax-fmca100188-p.aspx>

The information contained within this document is accurate to the best of our knowledge and representative of the part described herein. It may be necessary to make modifications to the part and/or the documentation of the part in order to implement improvements. Fairview Microwave reserves the right to make such changes as required. Unless otherwise stated, all specifications are nominal. Fairview Microwave does not make any representation or warranty regarding the suitability of the part described herein for any particular purpose, and Fairview Microwave does not assume liability arising out of the use of any part or document.

FMCA100188 CAD Drawing
2.92mm Female to 2.92mm Female Bulkhead Cable .118 Semi-Rigid Coax



- 1. CABLE ASSEMBLY LENGTH LABEL PLACEMENT: CABLES 36 INCHES OR LESS, ONE LABEL APPROXIMATELY CENTERED. LONGER THAN 36 INCHES, TWO LABELS APPROXIMATELY 6 INCHES FROM EACH CONNECTOR.
- 2. CABLE ASSEMBLY SHALL BE TESTED FOR CONTINUITY.
- 3. CABLE ASSEMBLY LENGTH DETERMINED ITEM P/N AND DESCRIPTION.

THE INFORMATION CONTAINED IN THIS DRAWING IS THE SOLE PROPERTY OF INFINITE ELECTRONICS, INC. ANY REPRODUCTION IN PART OR WHOLE WITHOUT THE WRITTEN PERMISSION OF INFINITE ELECTRONICS, INC. IS PROHIBITED. THESE COMMODITIES, TECHNOLOGY OR SOFTWARE WERE EXPORTED FROM THE UNITED STATES IN ACCORDANCE WITH THE EXPORT ADMINISTRATION REGULATIONS. UNLESS OTHERWISE SPECIFIED, LEADING DIMENSIONS ARE IN INCHES. DIMENSIONS IN [] ARE IN MILLIMETERS.

UNLESS OTHERWISE SPECIFIED, LEADING DIMENSIONS ARE IN INCHES. DIMENSIONS IN [] ARE IN MILLIMETERS.		Fairview Microwave® an INFINIT® brand		INTERPRET ALL DIMENSIONS AND TOLERANCES PER ASME Y14.5	
TOLERANCES:		Website: www.FairviewMicrowave.com		SCALE	
X = ±.2 [5]		Phone: 1.800.715.4396 1.972.649.6678		NONE	
.XX = ±.02 [0.5]				SHEET	
.XXX = ±.005 [0.13]				1 OF 1	
ANGLES ± 1°					
CABLE LENGTH TOLERANCES:		DESCRIPTION			
>12 [305] ≤ 60 [1524] = ±1 [25] / -0		2.92 mm FEMALE TO 2.92 mm FEMALE BULKHEAD USING PE-118SR COAX			
>60 [1524] ≤ 120 [3048] = ±4 [102] / -0					
>120 [3048] ≤ 300 [7620] = ±5% / -0					
ALL DIMENSIONS ARE FOR REFERENCE ONLY. UNLESS OTHERWISE SPECIFIED, DIMENSIONS ARE IN INCHES. DIMENSIONS IN [] ARE IN MILLIMETERS. UNLESS OTHERWISE SPECIFIED, LEADING DIMENSIONS ARE IN INCHES. DIMENSIONS IN [] ARE IN MILLIMETERS.		SIZE		REV	
		A		A	
		CAGE CODE		ITEM NO.	
		3FKR5		FMCA100188	
		DRAWN BY			
		KGLEBOVA			