

2.92mm Male to RA 2.92mm Male  
Cable .118 Semi-Rigid Coax



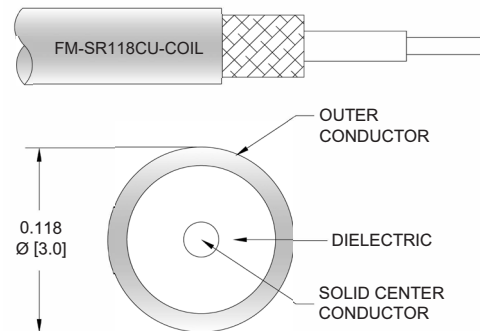
**FMCA100186**

**Configuration**

- Connector 1: 2.92mm Male
- Connector 2: 2.92mm Male Right Angle
- Cable Type: FM-SR118CU-COIL
- Coax Flex Type: Semi-Rigid

**Features**

- Max Frequency 40 GHz
- 500 Mating Cycles



**Applications**

- General Purpose
- Laboratory Use

**Description**

The 2.92mm male to RA 2.92mm male cable using .118 coax, part number FMCA100186, from Fairview Microwave is in-stock and ships same day. This Fairview 2.92mm to 2.92mm cable assembly has a male to male gender configuration with 50 ohm semi-rigid FM-SR118CU-COIL coax. Fairview Microwave's semi-rigid RF cable assemblies are ideal for high performance applications and can be formed, using proper tooling, to the routing pattern required. The FMCA100186 2.92mm male to 2.92mm male cable assembly operates to 40 GHz. The right angle 2.92mm interface on the FM-SR118CU-COIL cable allows for easier connections in tight spaces.

Custom versions of most RF cable assemblies can be built and shipped same day. Custom cable assembly lengths can be obtained by specifying the desired length on the web site at time of order or by contacting a sales representative. Other RF cable assembly value added services including connector orientation or clocking, heat shrink booting and labeling are also available. RF testing can also be performed to document the electrical performance of your cable assembly.

**Electrical Specifications**

Description	Minimum	Typical	Maximum	Units
Frequency Range	DC		40	GHz
VSWR			1.4:1	

**Specifications by Frequency**

2.92mm Male to RA 2.92mm Male  
Cable .118 Semi-Rigid Coax



**FMCA100186**

Part Number	Length	Description	F1	F2	F3	F4	Units	Weight (lbs)
			Frequency	2500	5000	10000	20000	
FMCA100186	Custom Lengths Available	Insertion Loss (Typ.)	0.175	0.258	0.425	0.625	dB/ft	
			0.58	0.85	1.4	2.06	dB/m	
FMCA100186-6	6 Inch	Insertion Loss (Typ.)	0.92	1.23	1.68	2.31	dB	0.049
FMCA100186-12	12 Inch	Insertion Loss (Typ.)	1.01	1.36	1.89	2.62	dB	0.06
FMCA100186-18	18 Inch	Insertion Loss (Typ.)	1.1	1.49	2.11	2.93	dB	0.072
FMCA100186-24	24 Inch	Insertion Loss (Typ.)	1.19	1.62	2.32	3.24	dB	0.083
FMCA100186-36	36 Inch	Insertion Loss (Typ.)	1.36	1.87	2.74	3.87	dB	0.106

The insertion loss data for the base model does not include loss due to the connectors. Each length includes insertion loss due to the connectors.

Loss due to Connector 1: 0.4\*SQRT(FGHz) dB  
 Loss due to Connector 2: 0.2 dB  
 Base Weight: 0.06 pounds  
 Additional Weight per Inch: 0.00188 pounds

**Mechanical Specifications**

**Cable Assembly**

Width/Diameter: 0.5 in [12.7 mm]  
 Weight: 0.06 lbs [27.22 g]

**Cable**

Cable Type: FM-SR118CU-COIL  
 Impedance: 50 Ohms  
 Inner Conductor Type: Solid  
 Inner Conductor Material and Plating: Copper, Silver  
 Dielectric Type: PTFE (LD)  
 Number of Shields: 1  
 Shield Layer 1: Copper  
 Jacket Material: Tan  
 One Time Minimum Bend Radius: 0.4 in [10.16 mm]

2.92mm Male to RA 2.92mm Male  
Cable .118 Semi-Rigid Coax



**FMCA100186**

**Connectors**

Description	Connector 1	Connector 2
Type	2.92mm Male	2.92mm Male Right Angle
Impedance	50 Ohms	50 Ohms
Configuration	Straight	Right Angle
Mating Cycles	500	500
Contact Material and Plating	Beryllium Copper, Gold	Beryllium Copper, Gold over Nickel over Copper
Contact Plating Specification	ASTM-B488	
Dielectric Type	PTFE	PPO
Body Material and Plating	Beryllium Copper, Gold	Stainless Steel, Passivated
Body Plating Specification	ASTM-B488	
Coupling Nut Material and Plating	Steel	
Torque	8 in-lbs 0.9 Nm	

**Environmental Specifications**

Operating Range Temperature -40 to +105 deg C

**Compliance Certifications** (see [product page](#) for current document)

**Plotted and Other Data**

Notes:

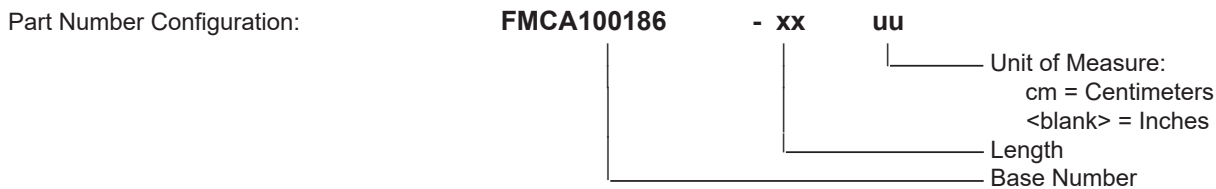
2.92mm Male to RA 2.92mm Male  
Cable .118 Semi-Rigid Coax



**FMCA100186**

**Typical Performance Data**

**How to Order**



Example: FMCA100186-12 = 12 inches long cable  
FMCA100186-100cm = 100 cm long cable

2.92mm Male to RA 2.92mm Male Cable .118 Semi-Rigid Coax from Fairview Microwave is in-stock and available to ship same-day. All of our RF/microwave products are available off-the-shelf from our ISO 9001:2008 certified facilities in Lewisville, Texas. Fairview Microwave is RF on-demand.

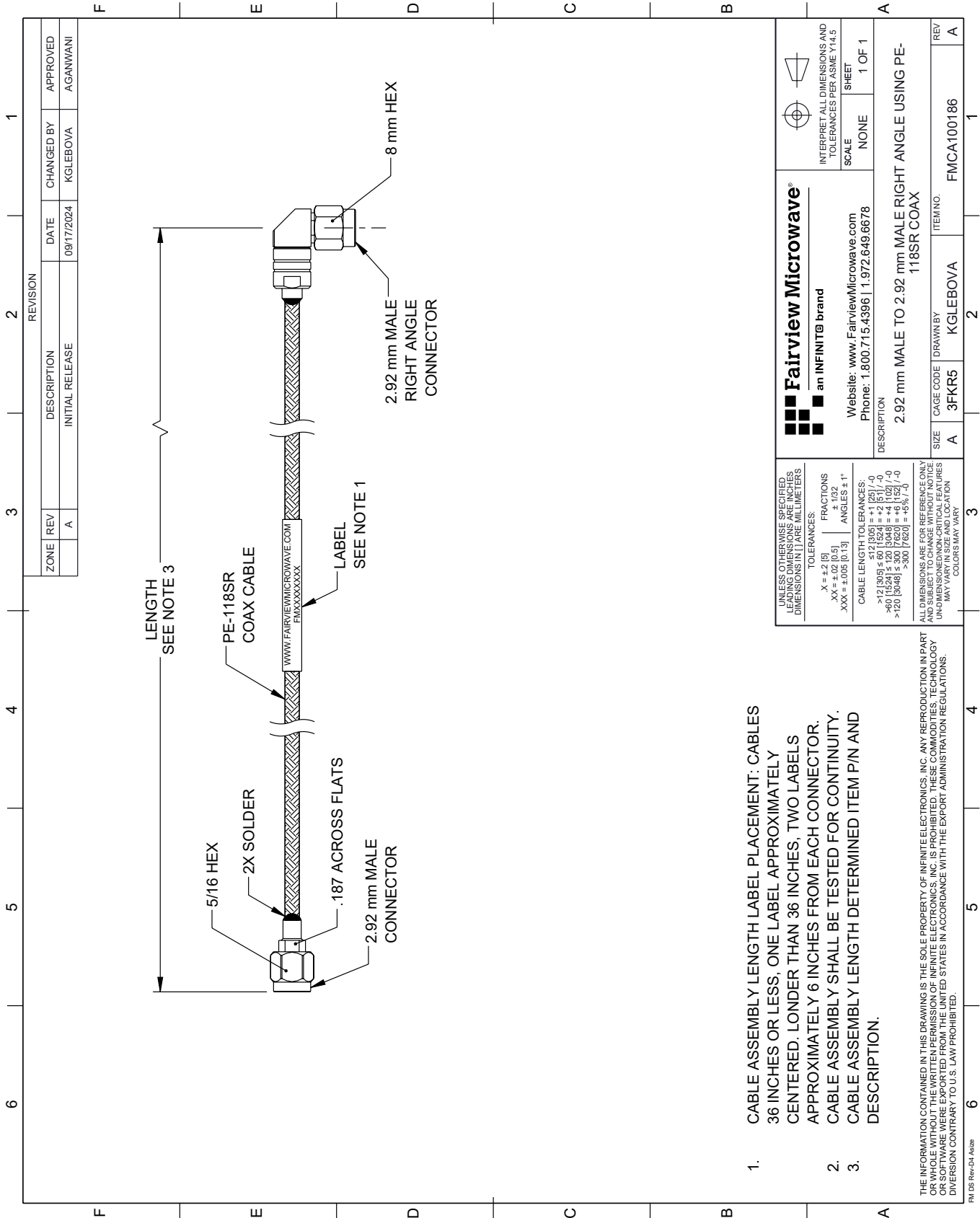
For additional information on this product, please click the following link: [2.92mm Male to RA 2.92mm Male Cable .118 Semi-Rigid Coax FMCA100186](https://www.fairviewmicrowave.com/2.92mm-male-to-ra-2.92mm-male-cable-.118-coax-fmca100186-p.aspx)

URL: <https://www.fairviewmicrowave.com/2.92mm-male-to-ra-2.92mm-male-cable-.118-coax-fmca100186-p.aspx>

The information contained within this document is accurate to the best of our knowledge and representative of the part described herein. It may be necessary to make modifications to the part and/or the documentation of the part in order to implement improvements. Fairview Microwave reserves the right to make such changes as required. Unless otherwise stated, all specifications are nominal. Fairview Microwave does not make any representation or warranty regarding the suitability of the part described herein for any particular purpose, and Fairview Microwave does not assume liability arising out of the use of any part or document.

# FMCA100186 CAD Drawing

2.92mm Male to RA 2.92mm Male Cable .118 Semi-Rigid Coax



REVISION		DATE	CHANGED BY	APPROVED
ZONE	REV	DESCRIPTION	INITIAL RELEASE	
	A			AGANWANI

 <b>Fairview Microwave</b> an INFINITE brand		Website: <a href="http://www.FairviewMicrowave.com">www.FairviewMicrowave.com</a> Phone: 1.800.715.4396   1.972.649.6678	INTERPRET ALL DIMENSIONS AND TOLERANCES PER ASME Y14.5 SCALE: NONE SHEET: 1 OF 1
DESCRIPTION <b>2.92 mm MALE TO 2.92 mm MALE RIGHT ANGLE USING PE-118SR COAX</b>			
SIZE	CAGE CODE	DRAWN BY	ITEM NO.
A	3FKR5	KGLEBOVA	FMCA100186

UNLESS OTHERWISE SPECIFIED, LEADING DIMENSIONS ARE IN INCHES AND TRAILING DIMENSIONS ARE IN MILLIMETERS.

TOLERANCES:  
 .X = ±.2 (5) FRACTIONS ±.132  
 .XX = ±.02 (0.5) ±.132  
 .XXX = ±.005 (0.13) ANGLES ± 1°

CABLE LENGTH TOLERANCES:  
 >12 (305) ≤ 60 (1524) = ±.125 (7.6)  
 >60 (1524) ≤ 120 (3048) = ±.125 (7.6)  
 >120 (3048) ≤ 300 (7620) = ±.25 (6.35)

ALL DIMENSIONS ARE FOR REFERENCE ONLY. UNLESS OTHERWISE SPECIFIED, DIMENSIONS ARE IN INCHES AND TRAILING DIMENSIONS ARE IN MILLIMETERS. UNLESS OTHERWISE SPECIFIED, DIMENSIONS ARE IN INCHES AND TRAILING DIMENSIONS ARE IN MILLIMETERS. COLORS MAY VARY.

THE INFORMATION CONTAINED IN THIS DRAWING IS THE SOLE PROPERTY OF INFINITE ELECTRONICS, INC. ANY REPRODUCTION IN PART OR WHOLE WITHOUT THE WRITTEN PERMISSION OF INFINITE ELECTRONICS, INC. IS PROHIBITED. THESE COMMODITIES, TECHNOLOGY OR SOFTWARE WERE EXPORTED FROM THE UNITED STATES IN ACCORDANCE WITH THE EXPORT ADMINISTRATION REGULATIONS. DIVISION CONTRARY TO U.S. LAW PROHIBITED.

- CABLE ASSEMBLY LENGTH LABEL PLACEMENT: CABLES 36 INCHES OR LESS, ONE LABEL APPROXIMATELY CENTERED. LONGER THAN 36 INCHES, TWO LABELS APPROXIMATELY 6 INCHES FROM EACH CONNECTOR.
- CABLE ASSEMBLY SHALL BE TESTED FOR CONTINUITY.
- CABLE ASSEMBLY LENGTH DETERMINED ITEM P/N AND DESCRIPTION.