

2.92mm Male to 2.92mm Female Cable .118 Semi-Rigid Coax



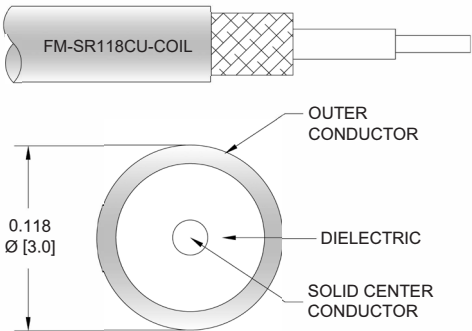
FMCA100184

Configuration

- Connector 1: 2.92mm Male
- Connector 2: 2.92mm Female
- Cable Type: FM-SR118CU-COIL
- Coax Flex Type: Semi-Rigid

Features

- Max Frequency 40 GHz
- 500 Mating Cycles



Applications

- General Purpose
- Laboratory Use

Description

The 2.92mm male to 2.92mm female cable using .118 coax, part number FMCA100184, from Fairview Microwave is in-stock and ships same day. This Fairview 2.92mm to 2.92mm cable assembly has a male to female gender configuration with 50 ohm semi-rigid FM-SR118CU-COIL coax. Fairview Microwave's semi-rigid RF cable assemblies are ideal for high performance applications and can be formed, using proper tooling, to the routing pattern required. The FMCA100184 2.92mm male to 2.92mm female cable assembly operates to 40 GHz.

Custom versions of most RF cable assemblies can be built and shipped same day. Custom cable assembly lengths can be obtained by specifying the desired length on the web site at time of order or by contacting a sales representative. Other RF cable assembly value added services including connector orientation or clocking, heat shrink booting and labeling are also available. RF testing can also be performed to document the electrical performance of your cable assembly.

Electrical Specifications

| Description | Minimum | Typical | Maximum | Units |
|-----------------|---------|---------|---------|-------|
| Frequency Range | DC | | 40 | GHz |
| VSWR | | | 1.4:1 | |

Specifications by Frequency

2.92mm Male to 2.92mm Female Cable .118 Semi-Rigid Coax



FMCA100184

| Part Number | Length | Description | F1 | F2 | F3 | F4 | Units | Weight (lbs) |
|---------------|--------------------------|-----------------------|-------|-------|-------|-------|-------|--------------|
| | | Frequency | 2500 | 5000 | 10000 | 20000 | MHz | |
| FMCA100184 | Custom Lengths Available | Insertion Loss (Typ.) | 0.175 | 0.258 | 0.425 | 0.625 | dB/ft | |
| | | | 0.58 | 0.85 | 1.4 | 2.06 | dB/m | |
| FMCA100184-6 | 6 Inch | Insertion Loss (Typ.) | 0.82 | 1.13 | 1.58 | 2.21 | dB | 0.049 |
| FMCA100184-12 | 12 Inch | Insertion Loss (Typ.) | 0.91 | 1.26 | 1.79 | 2.52 | dB | 0.06 |
| FMCA100184-18 | 18 Inch | Insertion Loss (Typ.) | 1 | 1.39 | 2.01 | 2.83 | dB | 0.072 |
| FMCA100184-24 | 24 Inch | Insertion Loss (Typ.) | 1.09 | 1.52 | 2.22 | 3.14 | dB | 0.083 |
| FMCA100184-36 | 36 Inch | Insertion Loss (Typ.) | 1.26 | 1.77 | 2.64 | 3.77 | dB | 0.106 |

The insertion loss data for the base model does not include loss due to the connectors. Each length includes insertion loss due to the connectors.

Loss due to Connector 1: 0.4*SQRT(FGHz) dB
 Loss due to Connector 2: 0.1 dB
 Base Weight: 0.06 pounds
 Additional Weight per Inch: 0.00188 pounds

Mechanical Specifications

Cable Assembly

Width/Diameter 0.5 in [12.7 mm]
 Weight 0.06 lbs [27.22 g]

Cable

Cable Type FM-SR118CU-COIL
 Impedance 50 Ohms
 Inner Conductor Type Solid
 Inner Conductor Material and Plating Copper, Silver
 Dielectric Type PTFE (LD)
 Number of Shields 1
 Shield Layer 1 Copper
 Jacket Material Tan
 One Time Minimum Bend Radius 0.4 in [10.16 mm]

2.92mm Male to 2.92mm Female Cable .118 Semi-Rigid Coax



FMCA100184

Connectors

| Description | Connector 1 | Connector 2 |
|-----------------------------------|------------------------|--|
| Type | 2.92mm Male | 2.92mm Female |
| Impedance | 50 Ohms | 50 Ohms |
| Configuration | Straight | Straight |
| Mating Cycles | 500 | 500 |
| Contact Material and Plating | Beryllium Copper, Gold | Beryllium Copper, Gold over Nickel over Copper |
| Contact Plating Specification | ASTM-B488 | |
| Dielectric Type | PTFE | PPO |
| Body Material and Plating | Beryllium Copper, Gold | Stainless Steel, Passivated |
| Body Plating Specification | ASTM-B488 | |
| Coupling Nut Material and Plating | Steel | |
| Torque | 8 in-lbs 0.9 Nm | |

Environmental Specifications

Operating Range Temperature-40 to +105 deg C

Compliance Certifications (see [product page](#) for current document)

Plotted and Other Data

Notes:

2.92mm Male to 2.92mm Female Cable .118 Semi-Rigid Coax



FMCA100184

Typical Performance Data

How to Order

Part Number Configuration: **FMCA100184** **- xx** **uu**

Unit of Measure:
cm = Centimeters
<blank> = Inches

Length

Base Number

Example: FMCA100184-12 = 12 inches long cable
FMCA100184-100cm = 100 cm long cable

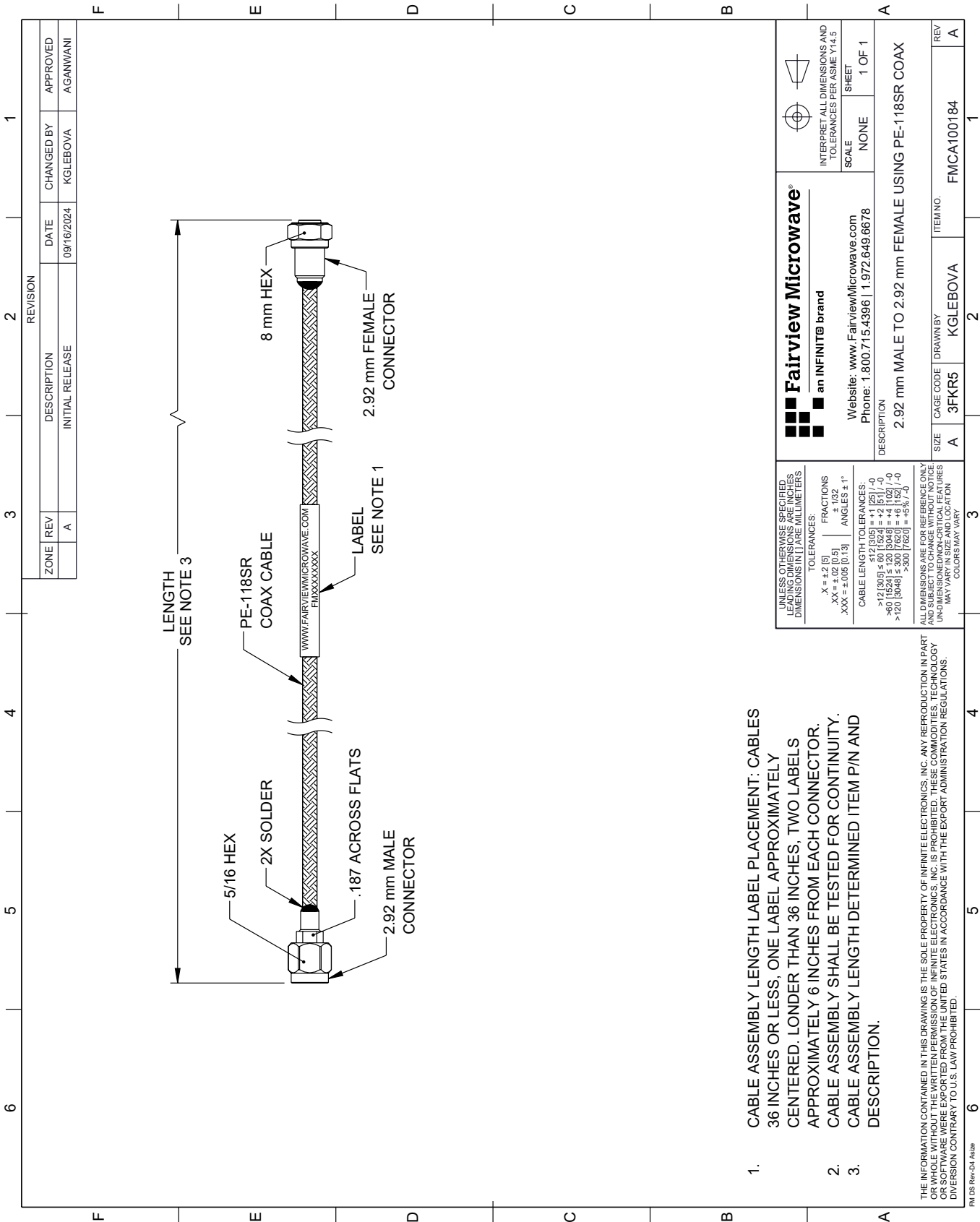
2.92mm Male to 2.92mm Female Cable .118 Semi-Rigid Coax from Fairview Microwave is in-stock and available to ship same-day. All of our RF/microwave products are available off-the-shelf from our ISO 9001:2008 certified facilities in Lewisville, Texas. Fairview Microwave is RF on-demand.

For additional information on this product, please click the following link: [2.92mm Male to 2.92mm Female Cable .118 Semi-Rigid Coax FMCA100184](https://www.fairviewmicrowave.com/2.92mm-male-to-2.92mm-female-cable-.118-coax-fmca100184-p.aspx)

URL: <https://www.fairviewmicrowave.com/2.92mm-male-to-2.92mm-female-cable-.118-coax-fmca100184-p.aspx>

The information contained within this document is accurate to the best of our knowledge and representative of the part described herein. It may be necessary to make modifications to the part and/or the documentation of the part in order to implement improvements. Fairview Microwave reserves the right to make such changes as required. Unless otherwise stated, all specifications are nominal. Fairview Microwave does not make any representation or warranty regarding the suitability of the part described herein for any particular purpose, and Fairview Microwave does not assume liability arising out of the use of any part or document.

FMCA100184 CAD Drawing
2.92mm Male to 2.92mm Female Cable .118 Semi-Rigid Coax



- 1. CABLE ASSEMBLY LENGTH LABEL PLACEMENT: CABLES 36 INCHES OR LESS, ONE LABEL APPROXIMATELY CENTERED. LONGER THAN 36 INCHES, TWO LABELS APPROXIMATELY 6 INCHES FROM EACH CONNECTOR.
- 2. CABLE ASSEMBLY SHALL BE TESTED FOR CONTINUITY.
- 3. CABLE ASSEMBLY LENGTH DETERMINED ITEM P/N AND DESCRIPTION.

THE INFORMATION CONTAINED IN THIS DRAWING IS THE SOLE PROPERTY OF INFINITE ELECTRONICS, INC. ANY REPRODUCTION IN PART OR WHOLE WITHOUT THE WRITTEN PERMISSION OF INFINITE ELECTRONICS, INC. IS PROHIBITED. THESE COMMODITIES, TECHNOLOGY OR SOFTWARE WERE EXPORTED FROM THE UNITED STATES IN ACCORDANCE WITH THE EXPORT ADMINISTRATION REGULATIONS. DIVISION CONTRARY TO U.S. LAW PROHIBITED.

FM DS Rev-D4 Addn