

SMA Male to SMA Male Cable RG-400 Coax

FMCA10016

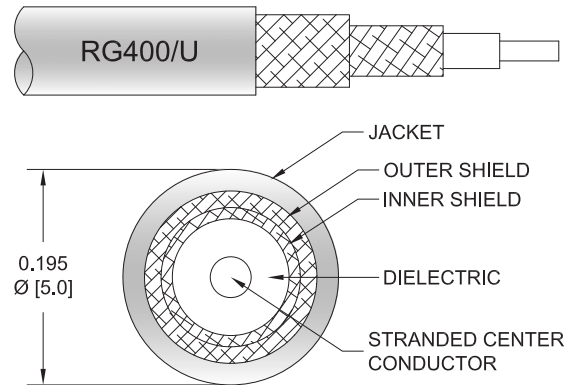


Configuration

- Connector 1: SMA Male
- Connector 2: SMA Male
- Cable Type: RG-400
- Coax Flex Type: Flexible

Features

- Max Frequency 12.4 GHz
- 70% Phase Velocity
- Double Shielded
- FEP Jacket



Applications

- General Purpose
- Laboratory Use

Description

The SMA male to SMA male cable using RG400 coax, part number FMCA10016, from Fairview Microwave is in-stock and ships same day. This Fairview SMA to SMA cable assembly has a male to male gender configuration with 50 ohm flexible RG-400 coax. Fairview Microwave's flexible RF cable assemblies are ideal for applications where tight bends and continual flexure are required. The FMCA10016 SMA male to SMA male cable assembly operates to 12.4 GHz. The double shielding of this Fairview cable assembly provides excellent shielding effectiveness.

Custom versions of most RF cable assemblies can be built and shipped same day. Custom cable assembly lengths can be obtained by specifying the desired length on the web site at time of order or by contacting a sales representative. Other RF cable assembly value added services including connector orientation or clocking, heat shrink booting and labeling are also available. RF testing can also be performed to document the electrical performance of your cable assembly.

Electrical Specifications

Description	Minimum	Typical	Maximum	Units
Frequency Range	DC		12.4	GHz
VSWR			1.4:1	
Velocity of Propagation		70		%
Capacitance		32 [104.99]		pF/ft [pF/m]
Operating Voltage (AC)			1,900	Vrms

Specifications by Frequency

SMA Male to SMA Male Cable RG-400 Coax



FMCA10016

Part Number	Length	Description	F1	F2	F3	F4	F5	Units	Weight (lbs)
		Frequency	500	1000	2500	5000	11000	MHz	
FMCA10016	Custom Lengths Available	Insertion Loss (Typ.)	0.09	0.14	0.23	0.36	0.57	dB/ft	
			0.3	0.46	0.76	1.19	1.88	dB/m	
FMCA10016-6	6 Inch	Insertion Loss (Typ.)	0.25	0.27	0.32	0.38	0.49	dB	0.051
FMCA10016-12	12 Inch	Insertion Loss (Typ.)	0.29	0.34	0.43	0.56	0.77	dB	0.072
FMCA10016-24	24 Inch	Insertion Loss (Typ.)	0.38	0.48	0.66	0.92	1.34	dB	0.114
FMCA10016-36	36 Inch	Insertion Loss (Typ.)	0.47	0.62	0.89	1.28	1.91	dB	0.156
FMCA10016-72	72 inch	Insertion Loss (Typ.)	0.74	1.04	1.58	2.36	3.62	dB	0.282

The insertion loss data for the base model does not include loss due to the connectors. Each length includes insertion loss due to the connectors.

Loss due to Connector 1: 0.1 dB
 Loss due to Connector 2: 0.1 dB
 Base Weight: 0.072 pounds
 Additional Weight per Inch: 0.0035 pounds

Mechanical Specifications

Cable Assembly

Weight 0.072 lbs [32.66 g]

Cable

Cable Type RG-400
 Impedance 50 Ohms
 Inner Conductor Type Stranded
 Inner Conductor Material and Plating Copper, Silver
 Dielectric Type PTFE
 Number of Shields 2
 Shield Layer 1 Silver Plated Copper Braid
 Shield Layer 2 Silver Plated Copper Braid
 Jacket Material FEP, Tan
 Jacket Diameter 0.195 in [4.95 mm]
 Repeated Minimum Bend Radius 1 in [25.4 mm]

SMA Male to SMA Male Cable RG-400 Coax



FMCA10016

Connectors

Description	Connector 1	Connector 2
Type	SMA Male	SMA Male
Specification	MIL-STD-348A	MIL-STD-348A
Impedance	50 Ohms	50 Ohms
Configuration	Straight	Straight
Contact Material and Plating	Brass, Gold	Brass, Gold
Contact Plating Specification	50 µin minimum	50 µin minimum
Dielectric Type	PTFE	PTFE
Body Material and Plating	Brass, Gold	Brass, Gold
Body Plating Specification	3 µin minimum	3 µin minimum
Coupling Nut Material and Plating	Brass, Gold	Brass, Gold
Coupling Nut Plating Specification	3 µin minimum	3 µin minimum
Hex Size	5/16 inch	5/16 inch
Torque	5 in-lbs 0.57 Nm	5 in-lbs 0.57 Nm

Environmental Specifications

Operating Range Temperature -55 to +165 deg C

Compliance Certifications (see [product page](#) for current document)

Plotted and Other Data

Notes:

SMA Male to SMA Male Cable RG-400 Coax



FMCA10016

Typical Performance Data

How to Order

Part Number Configuration:

FMCA10016

- xx

uu

Unit of Measure:
cm = Centimeters
<blank> = Inches
Length
Base Number

Example: FMCA10016-12 = 12 inches long cable
FMCA10016-100cm = 100 cm long cable

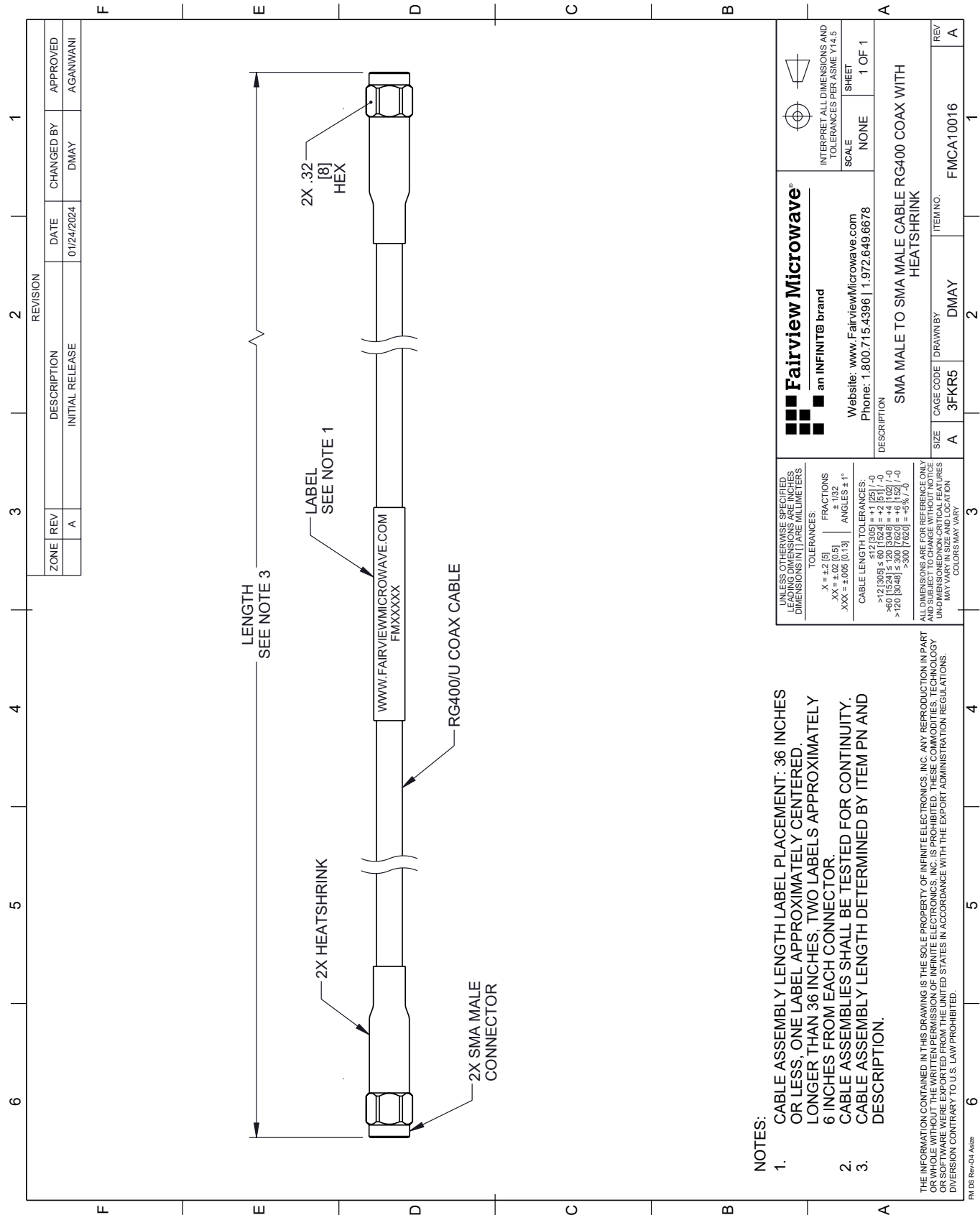
SMA Male to SMA Male Cable RG-400 Coax from Fairview Microwave is in-stock and available to ship same-day. All of our RF/microwave products are available off-the-shelf from our ISO 9001:2008 certified facilities in Lewisville, Texas. Fairview Microwave is RF on-demand.

For additional information on this product, please click the following link: [SMA Male to SMA Male Cable RG-400 Coax FMCA10016](#)

URL: <https://www.fairviewmicrowave.com/sma-male-to-sma-male-cable-rg-400-coax-fmca10016-p.aspx>

The information contained within this document is accurate to the best of our knowledge and representative of the part described herein. It may be necessary to make modifications to the part and/or the documentation of the part in order to implement improvements. Fairview Microwave reserves the right to make such changes as required. Unless otherwise stated, all specifications are nominal. Fairview Microwave does not make any representation or warranty regarding the suitability of the part described herein for any particular purpose, and Fairview Microwave does not assume liability arising out of the use of any part or document.

FMCA10016 CAD Drawing
SMA Male to SMA Male Cable RG-400 Coax



- 1. CABLE ASSEMBLY LENGTH LABEL PLACEMENT: 36 INCHES OR LESS; ONE LABEL APPROXIMATELY CENTERED. LONGER THAN 36 INCHES, TWO LABELS APPROXIMATELY 6 INCHES FROM EACH CONNECTOR.
- 2. CABLE ASSEMBLIES SHALL BE TESTED FOR CONTINUITY.
- 3. CABLE ASSEMBLY LENGTH DETERMINED BY ITEM PN AND DESCRIPTION.

UNLESS OTHERWISE SPECIFIED, LEADING DIMENSIONS ARE IN INCHES. UNLESS OTHERWISE SPECIFIED, DIMENSIONS IN [] ARE IN MILLIMETERS.		Fairview Microwave® an INFINITI® brand		INTERPRET ALL DIMENSIONS AND TOLERANCES PER ASME Y14.5	
TOLERANCES:		Website: www.FairviewMicrowave.com Phone: 1.800.715.4396 1.972.649.6678		SCALE NONE	
X = ±.2 [5] .XX = ±.02 [0.5] .XXX = ±.005 [0.13]		FRACTIONS ± 1/32 ANGLES ± 1°		SHEET 1 OF 1	
CABLE LENGTH TOLERANCES:		DESCRIPTION SMA MALE TO SMA MALE CABLE RG400 COAX WITH HEATSHRINK			
>12 [305] ≤ 60 [1524] = ±.125 [-.0]		SIZE A		CAGE CODE 3FKR5	
>60 [1524] ≤ 120 [3048] = ±.1102 [-.0]		DRAWN BY DMAY		ITEM NO. FMCA10016	
>120 [3048] ≤ 300 [7620] = ±.05% [-.0]		REV A			
ALL DIMENSIONS ARE FOR REFERENCE ONLY. UNLESS OTHERWISE SPECIFIED, DIMENSIONS ARE IN INCHES. UNLESS OTHERWISE SPECIFIED, DIMENSIONS IN [] ARE IN MILLIMETERS. COLORS MAY VARY.					

THE INFORMATION CONTAINED IN THIS DRAWING IS THE SOLE PROPERTY OF INFINITE ELECTRONICS, INC. ANY REPRODUCTION IN PART OR WHOLE WITHOUT THE WRITTEN PERMISSION OF INFINITE ELECTRONICS, INC. IS PROHIBITED. THESE COMMODITIES, TECHNOLOGY OR SOFTWARE WERE EXPORTED FROM THE UNITED STATES IN ACCORDANCE WITH THE EXPORT ADMINISTRATION REGULATIONS. DIVISION CONTRARY TO U.S. LAW PROHIBITED.