

RA BNC Male to BNC Female Cable RG-316 Coax

FMCA10013

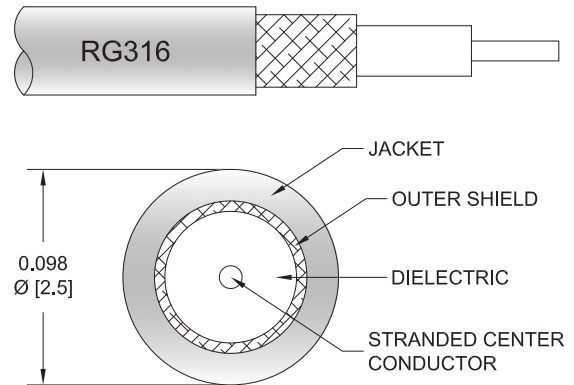


Configuration

- Connector 1: BNC Male Right Angle
- Connector 2: BNC Female
- Cable Type: RG-316
- Coax Cable Group: 8
- Coax Flex Type: Flexible

Features

- Max Frequency 1 GHz
- 69% Phase Velocity
- FEP Jacket



Applications

- General Purpose
- Laboratory Use

Description

The RA BNC male to BNC female cable using RG-316 coax, part number FMCA10013, from Fairview Microwave is in-stock and ships same day. This Fairview BNC to BNC cable assembly has a male to female gender configuration with 50 ohm flexible RG-316 coax. Fairview Microwave's flexible RF cable assemblies are ideal for applications where tight bends and continual flexure are required. The FMCA10013 BNC male to BNC female cable assembly operates to 1 GHz. The right angle BNC interface on the RG-316 cable allows for easier connections in tight spaces.

Custom versions of most RF cable assemblies can be built and shipped same day. Custom cable assembly lengths can be obtained by specifying the desired length on the web site at time of order or by contacting a sales representative. Other RF cable assembly value added services including connector orientation or clocking, heat shrink booting and labeling are also available. RF testing can also be performed to document the electrical performance of your cable assembly.

Electrical Specifications

Description	Minimum	Typical	Maximum	Units
Frequency Range	DC		1,000	MHz
VSWR			1.4:1	
Velocity of Propagation		69		%
Capacitance		29.4 [96.46]		pF/ft [pF/m]
Operating Voltage (AC)			335	Vrms
Jacket Spark			2,000	Vrms

Specifications by Frequency

RA BNC Male to BNC Female Cable RG-316 Coax



FMCA10013

Part Number	Length	Description	F1	F2	F3	F4	F5	Units	Weight (lbs)
		Frequency	50	100	250	500	1000	MHz	
FMCA10013	Custom Lengths Available	Insertion Loss (Typ.)	0.08	0.11	0.16	0.238	0.38	dB/ft	
			0.25	0.37	0.53	0.79	1.25	dB/m	
FMCA10013-12	12 inch	Insertion Loss (Typ.)	0.38	0.41	0.46	0.54	0.68	dB	0.082
FMCA10013-24	24 inch	Insertion Loss (Typ.)	0.45	0.52	0.62	0.78	1.06	dB	0.093
FMCA10013-36	36 inch	Insertion Loss (Typ.)	0.53	0.63	0.78	1.02	1.44	dB	0.103
FMCA10013-48	48 inch	Insertion Loss (Typ.)	0.6	0.74	0.94	1.26	1.82	dB	0.113
FMCA10013-72	72 inch	Insertion Loss (Typ.)	0.75	0.96	1.26	1.73	2.58	dB	0.133

The insertion loss data for the base model does not include loss due to the connectors. Each length includes insertion loss due to the connectors.

Loss due to Connector 1:	0.1 dB
Loss due to Connector 2:	0.2 dB
Base Weight:	0.082 pounds
Additional Weight per Inch:	0.00084 pounds

Mechanical Specifications

Cable Assembly

Weight	0.082 lbs [37.19 g]
--------	---------------------

Cable

Cable Type	RG-316
Impedance	50 Ohms
Inner Conductor Type	Stranded
Inner Conductor Material and Plating	Copper Clad Steel, Silver
Dielectric Type	PTFE
Number of Shields	1
Shield Layer 1	Silver Plated Copper Braid
Jacket Material	FEP, Tan
Jacket Diameter	0.102 in [2.59 mm]

RA BNC Male to BNC Female Cable RG-316 Coax



FMCA10013

Connectors

Description	Connector 1	Connector 2
Type	BNC Male Right Angle	BNC Female
Specification		MIL-STD-348A
Impedance	50 Ohms	50 Ohms
Configuration	Right Angle	Straight
Contact Material and Plating	Brass, Gold	Brass, Gold
Contact Plating Specification	30 µin minimum	30 µin minimum
Dielectric Type	PTFE	PTFE
Body Material and Plating	Brass, Nickel	Brass, Nickel
Body Plating Specification	100 µin minimum	100 µin minimum
Coupling Nut Material and Plating	Brass, Nickel	
Coupling Nut Plating Specification	100 µin minimum	

Environmental Specifications

Operating Range Temperature -55 to +165 deg C

Compliance Certifications (see [product page](#) for current document)

Plotted and Other Data

Notes:

RA BNC Male to BNC Female Cable RG-316 Coax



FMCA10013

Typical Performance Data

How to Order

Part Number Configuration:

FMCA10013

- xx

uu

Unit of Measure:

cm = Centimeters

<blank> = Inches

Length

Base Number

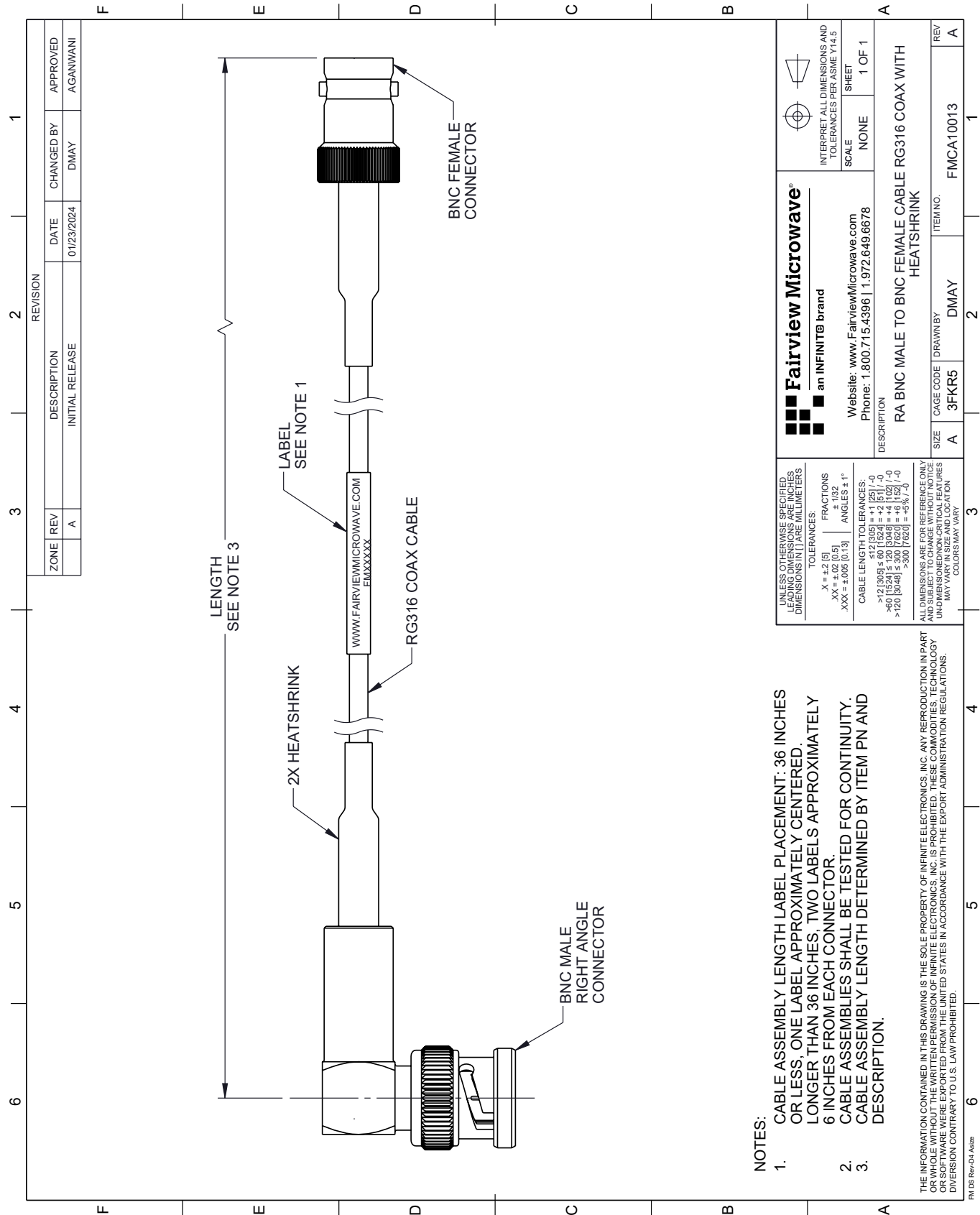
Example: FMCA10013-12 = 12 inches long cable
FMCA10013-100cm = 100 cm long cable

RA BNC Male to BNC Female Cable RG-316 Coax from Fairview Microwave is in-stock and available to ship same-day. All of our RF/microwave products are available off-the-shelf from our ISO 9001:2008 certified facilities in Lewisville, Texas. Fairview Microwave is RF on-demand.

For additional information on this product, please click the following link: [RA BNC Male to BNC Female Cable RG-316 Coax FMCA10013](#)

URL: <https://www.fairviewmicrowave.com/ra-bnc-male-to-bnc-female-cable-rg-316-coax-fmca10013-p.aspx>

The information contained within this document is accurate to the best of our knowledge and representative of the part described herein. It may be necessary to make modifications to the part and/or the documentation of the part in order to implement improvements. Fairview Microwave reserves the right to make such changes as required. Unless otherwise stated, all specifications are nominal. Fairview Microwave does not make any representation or warranty regarding the suitability of the part described herein for any particular purpose, and Fairview Microwave does not assume liability arising out of the use of any part or document.



- NOTES:
- CABLE ASSEMBLY LENGTH LABEL PLACEMENT: 36 INCHES OR LESS; ONE LABEL APPROXIMATELY CENTERED. LONGER THAN 36 INCHES, TWO LABELS APPROXIMATELY 6 INCHES FROM EACH CONNECTOR.
 - CABLE ASSEMBLIES SHALL BE TESTED FOR CONTINUITY.
 - CABLE ASSEMBLY LENGTH DETERMINED BY ITEM PN AND DESCRIPTION.

THE INFORMATION CONTAINED IN THIS DRAWING IS THE SOLE PROPERTY OF INFINITE ELECTRONICS, INC. ANY REPRODUCTION IN PART OR WHOLE WITHOUT THE WRITTEN PERMISSION OF INFINITE ELECTRONICS, INC. IS PROHIBITED. THESE COMMODITIES, TECHNOLOGY OR SOFTWARE WERE EXPORTED FROM THE UNITED STATES IN ACCORDANCE WITH THE EXPORT ADMINISTRATION REGULATIONS. DIVERSION CONTRARY TO U.S. LAW PROHIBITED.

FM DS Rev-D4 Altize