

Fire Rated Low PIM 7/16 DIN Male to 7/16 DIN Male Cable
TCOM-400-FR Coax With Times Microwave Components



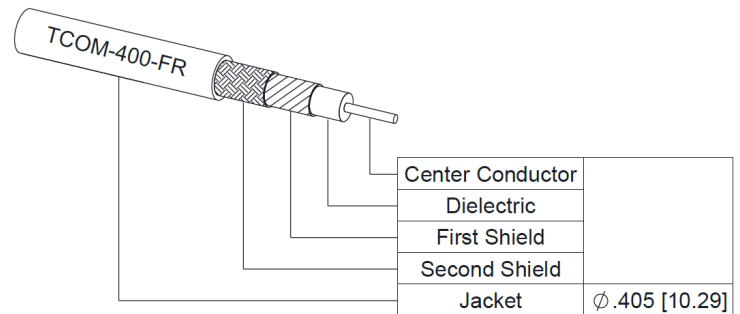
FMCA100114

Configuration

- Connector 1: 7/16 DIN Male
- Connector 2: 7/16 DIN Male
- Cable Type: TCOM-400-FR
- Coax Flex Type: Flexible

Features

- Max Frequency 6 GHz
- Shielding Effectivity > 100 dB
- 85% Phase Velocity
- Double Shielded
- PE Jacket
- 500 Mating Cycles



Applications

- General Purpose
- Laboratory Use
- Low PIM Applications

Description

The 7/16 DIN male to 7/16 DIN male cable using TCOM-400-FR coax, part number FMCA100114, from Fairview Microwave is in-stock and ships same day. This Fairview 7/16 DIN to 7/16 DIN cable assembly has a male to male gender configuration with 50 ohm flexible TCOM-400-FR coax. Fairview Microwave's flexible RF cable assemblies are ideal for applications where tight bends and continual flexure are required. Our low PIM design offers excellent passive intermodulation performance. The FMCA100114 7/16 DIN male to 7/16 DIN male cable assembly operates to 6 GHz. The double shielding of this Fairview cable assembly provides excellent shielding effectiveness of better than 100 dB.

Custom versions of most RF cable assemblies can be built and shipped same day. Custom cable assembly lengths can be obtained by specifying the desired length on the web site at time of order or by contacting a sales representative. Other RF cable assembly value added services including connector orientation or clocking, heat shrink booting and labeling are also available. RF testing can also be performed to document the electrical performance of your cable assembly.

Electrical Specifications

| Description | Minimum | Typical | Maximum | Units |
|--------------------------------------------|---------|--------------|---------|-----------------------|
| Frequency Range | DC | | 6 | GHz |
| VSWR | | | 1.4:1 | |
| Velocity of Propagation | | 85 | | % |
| RF Shielding | 100 | | | dB |
| Group Delay | | 1.2 [3.94] | | ns/ft [ns/m] |
| Passive Intermodulation | | -155 | | dBc |
| IM3 (2x43dBm Tones) at 850 MHz or 1900 MHz | | | | |
| Capacitance | | 23.9 [78.41] | | pF/ft [pF/m] |
| Inductance | | 0.06 [0.2] | | uH/ft [uH/m] |
| DC Resistance Inner Conductor | | 1.39 [4.56] | | Ohms/1000ft [Ohms/Km] |

Fire Rated Low PIM 7/16 DIN Male to 7/16 DIN Male Cable
TCOM-400-FR Coax With Times Microwave Components



FMCA100114

Electrical Specifications

| Description | Minimum | Typical | Maximum | Units |
|-------------------------------|---------|-------------|---------|-----------------------|
| DC Resistance Outer Conductor | | 1.47 [4.82] | | Ohms/1000ft [Ohms/Km] |
| Jacket Spark | | | 8,000 | Vrms |

Specifications by Frequency

| Part Number | Length | Description | F1 | F2 | F3 | F4 | F5 | Units | Weight (lbs) |
|---------------|--------------------------|-----------------------|-----------|------|-------|-------|-------|-------|--------------|
| | | | Frequency | | | | | MHz | |
| FMCA100114 | Custom Lengths Available | Insertion Loss (Typ.) | 0.021 | 0.03 | 0.044 | 0.072 | 0.117 | dB/ft | |
| | | | 0.07 | 0.1 | 0.15 | 0.24 | 0.39 | dB/m | |
| FMCA100114-12 | 12 inch | Insertion Loss (Typ.) | 0.52 | 0.52 | 0.54 | 0.57 | 0.61 | dB | 0.36 |
| FMCA100114-24 | 24 inch | Insertion Loss (Typ.) | 0.54 | 0.55 | 0.58 | 0.64 | 0.73 | dB | 0.44 |
| FMCA100114-36 | 36 inch | Insertion Loss (Typ.) | 0.56 | 0.58 | 0.63 | 0.71 | 0.85 | dB | 0.52 |
| FMCA100114-48 | 48 inch | Insertion Loss (Typ.) | 0.58 | 0.61 | 0.67 | 0.78 | 0.96 | dB | 0.6 |
| FMCA100114-60 | 60 inch | Insertion Loss (Typ.) | 0.6 | 0.64 | 0.71 | 0.85 | 1.08 | dB | 0.68 |

The insertion loss data for the base model does not include loss due to the connectors. Each length includes insertion loss due to the connectors.

| | |
|-----------------------------|----------------|
| Loss due to Connector 1: | 0.245 dB |
| Loss due to Connector 2: | 0.245 dB |
| Base Weight: | 0.36 pounds |
| Additional Weight per Inch: | 0.00666 pounds |

Mechanical Specifications

Cable Assembly

| | |
|----------------|---------------------|
| Width/Diameter | 0.5 in [12.7 mm] |
| Weight | 0.36 lbs [163.29 g] |

Cable

| | |
|--------------------------------------|----------------------------|
| Cable Type | TCOM-400-FR |
| Impedance | 50 Ohms |
| Inner Conductor Type | Solid |
| Inner Conductor Material and Plating | Copper Clad Aluminum |
| Dielectric Type | PE (F) |
| Number of Shields | 2 |
| Shield Layer 1 | Silver Plated Copper Braid |
| Shield Layer 2 | Tinned Copper Braid |
| Jacket Material | PE, Black |
| Jacket Diameter | 0.405 in [10.29 mm] |
| One Time Minimum Bend Radius | 1 in [25.4 mm] |
| Repeated Minimum Bend Radius | 4 in [101.6 mm] |
| Bending Moment | 0.5 lbs-ft [0.68 N-m] |
| Flat Plate Crush | 40 lbs/in [0.71 Kg/mm] |
| Tensile Strength | 160 lbs [72.57 Kg] |

Fire Rated Low PIM 7/16 DIN Male to 7/16 DIN Male Cable
TCOM-400-FR Coax With Times Microwave Components



FMCA100114

Connectors

| Description | Connector 1 | Connector 2 |
|------------------------------|------------------|------------------|
| Type | 7/16 DIN Male | 7/16 DIN Male |
| Impedance | 50 Ohms | 50 Ohms |
| Configuration | Straight | Straight |
| Mating Cycles | 500 | 500 |
| Contact Material and Plating | Brass, Silver | Brass, Silver |
| Dielectric Type | PTFE | PTFE |
| Body Material and Plating | Brass, Tri-Metal | Brass, Tri-Metal |

Environmental Specifications

Operating Range Temperature -40 to +85 deg C

Compliance Certifications (see [product page](#) for current document)

Plotted and Other Data

Notes:

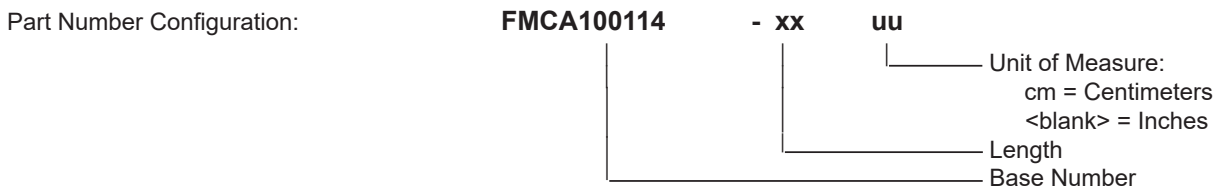
Fire Rated Low PIM 7/16 DIN Male to 7/16 DIN Male Cable
TCOM-400-FR Coax With Times Microwave Components



FMCA100114

Typical Performance Data

How to Order



Example: FMCA100114-12 = 12 inches long cable
FMCA100114-100cm = 100 cm long cable

Fire Rated Low PIM 7/16 DIN Male to 7/16 DIN Male Cable TCOM-400-FR Coax With Times Microwave Components from Fairview Microwave is in-stock and available to ship same-day. All of our RF/microwave products are available off-the-shelf from our ISO 9001:2008 certified facilities in Lewisville, Texas. Fairview Microwave is RF on-demand.

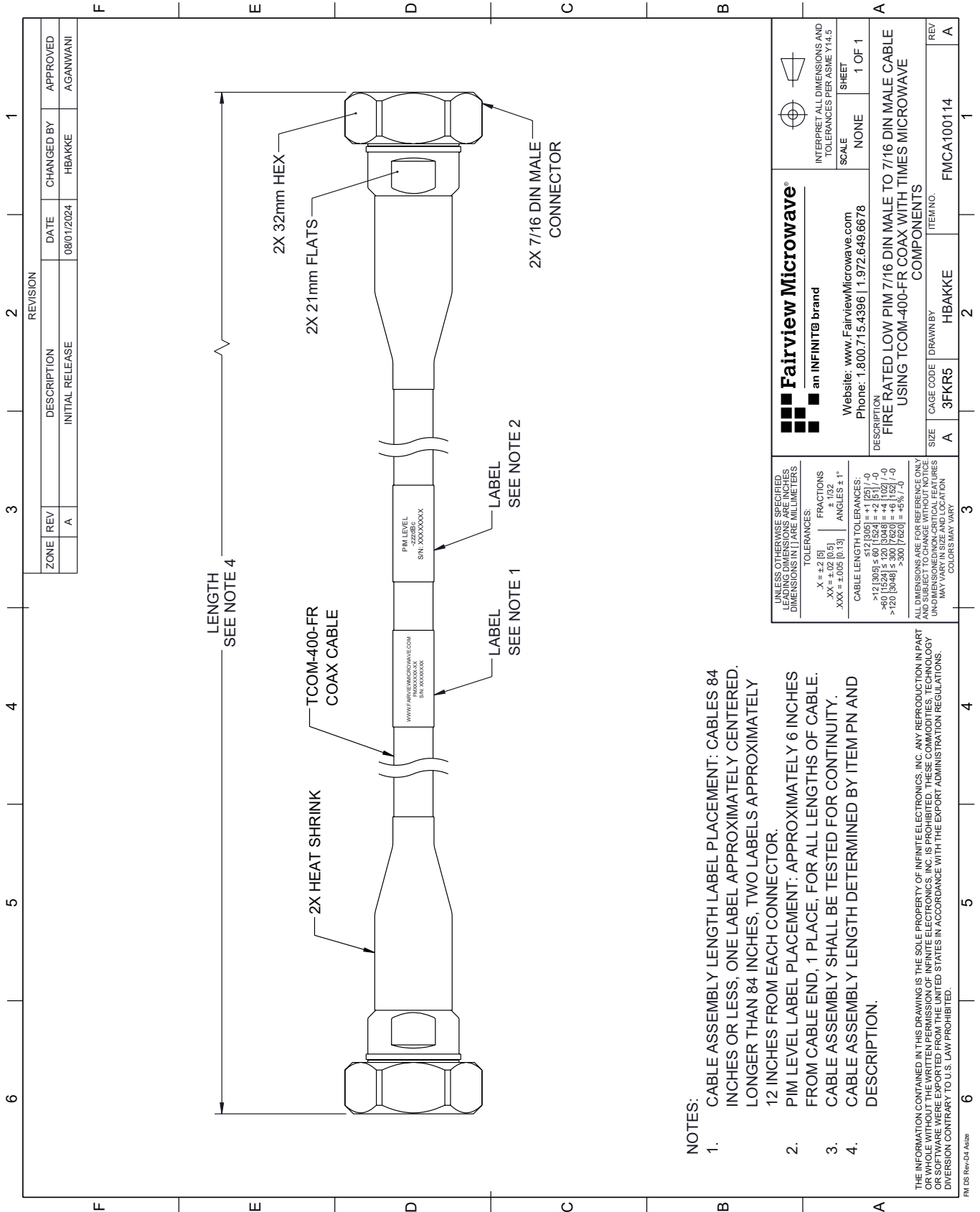
For additional information on this product, please click the following link: [Fire Rated Low PIM 7/16 DIN Male to 7/16 DIN Male Cable TCOM-400-FR Coax With Times Microwave Components FMCA100114](https://www.fairviewmicrowave.com/fire-rated-low-pim-7-16-din-male-to-7-16-din-male-cable-tcom-400-fr-coax-with-times-microwave-components-fmca100114)

URL: <https://www.fairviewmicrowave.com/fire-rated-low-pim-7-16-din-male-to-7-16-din-male-cable-tcom-400-fr-coax-with-times-microwave-components-fmca100114-p.aspx>

The information contained within this document is accurate to the best of our knowledge and representative of the part described herein. It may be necessary to make modifications to the part and/or the documentation of the part in order to implement improvements. Fairview Microwave reserves the right to make such changes as required. Unless otherwise stated, all specifications are nominal. Fairview Microwave does not make any representation or warranty regarding the suitability of the part described herein for any particular purpose, and Fairview Microwave does not assume liability arising out of the use of any part or document.

FMCA100114 CAD Drawing

Fire Rated Low PIM 7/16 DIN Male to 7/16 DIN Male Cable TCOM-400-FR Coax With Times Microwave Components



- NOTES:**
- CABLE ASSEMBLY LABEL PLACEMENT: CABLES 84 INCHES OR LESS, ONE LABEL APPROXIMATELY CENTERED. LONGER THAN 84 INCHES, TWO LABELS APPROXIMATELY 12 INCHES FROM EACH CONNECTOR.
 - PIM LEVEL LABEL PLACEMENT: APPROXIMATELY 6 INCHES FROM CABLE END, 1 PLACE, FOR ALL LENGTHS OF CABLE.
 - CABLE ASSEMBLY SHALL BE TESTED FOR CONTINUITY.
 - CABLE ASSEMBLY LENGTH DETERMINED BY ITEM PN AND DESCRIPTION.