

SMA Male to RA SSMC Plug Cable RG-188 Coax

FMCA100083

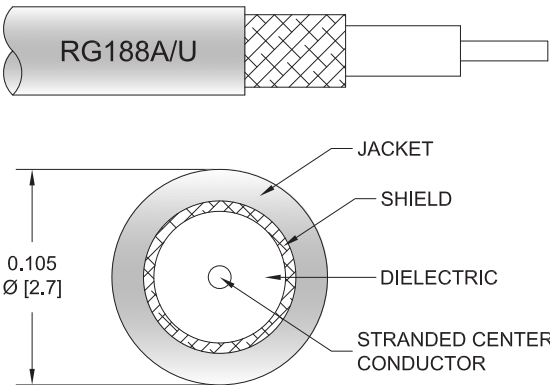


Configuration

- Connector 1: SMA Male
- Connector 2: SSMC Plug Right Angle
- Cable Type: RG-188
- Coax Flex Type: Flexible

Features

- Max Frequency 3 GHz
- PTFE Jacket



Applications

- General Purpose
- Laboratory Use

Description

The SMA male to RA SSMC plug cable using RG188 coax, part number FMCA100083, from Fairview Microwave is in-stock and ships same day. This Fairview SMA to SSMC cable assembly has a male to plug gender configuration with 50 ohm flexible RG-188 coax. Fairview Microwave’s flexible RF cable assemblies are ideal for applications where tight bends and continual flexure are required. The FMCA100083 SMA male to SSMC plug cable assembly operates to 3 GHz. The right angle SSMC interface on the RG-188 cable allows for easier connections in tight spaces.

Custom versions of most RF cable assemblies can be built and shipped same day. Custom cable assembly lengths can be obtained by specifying the desired length on the web site at time of order or by contacting a sales representative. Other RF cable assembly value added services including connector orientation or clocking, heat shrink booting and labeling are also available. RF testing can also be performed to document the electrical performance of your cable assembly.

Electrical Specifications

Description	Minimum	Typical	Maximum	Units
Frequency Range	DC		3	GHz
VSWR			1.4:1	

Mechanical Specifications

Cable Assembly

Width/Diameter	0.5 in [12.7 mm]
Weight	0.03 lbs [13.61 g]

Cable

Cable Type	RG-188
Impedance	50 Ohms
Inner Conductor Type	Stranded
Inner Conductor Material and Plating	Copper Clad Steel, Silver

SMA Male to RA SSMC Plug Cable RG-188 Coax

FMCA100083



Dielectric Type	PTFE
Number of Shields	1
Shield Layer 1	Silver Plated Copper Braid
Jacket Material	PTFE, White
Jacket Diameter	0.11 in [2.79 mm]

Connectors

Description	Connector 1	Connector 2
Type	SMA Male	SSMC Plug Right Angle
Specification	MIL-STD-348A	
Impedance	50 Ohms	50 Ohms
Configuration	Straight	Right Angle
Contact Material and Plating	Brass, Gold	Beryllium Copper, Gold
Contact Plating Specification	50 µin minimum	MIL-G-45204
Dielectric Type	PTFE	Teflon
Body Material and Plating	Brass, Gold	Brass, Gold
Body Plating Specification	3 µin minimum	MIL-G-45204
Coupling Nut Material and Plating	Brass, Gold	Beryllium Copper, Gold
Coupling Nut Plating Specification	3 µin minimum	MIL-G-45204
Hex Size	5/16 inch	

Environmental Specifications

Operating Range Temperature	-55 to +165 deg C
-----------------------------	-------------------

Compliance Certifications (see [product page](#) for current document)

Plotted and Other Data

Notes:

SMA Male to RA SSMC Plug Cable RG-188 Coax



FMCA100083

Typical Performance Data

How to Order

Part Number Configuration:

FMCA100083

- xx

uu

Unit of Measure:
cm = Centimeters
<blank> = Inches

Length

Base Number

Example: FMCA100083-12 = 12 inches long cable
FMCA100083-100cm = 100 cm long cable

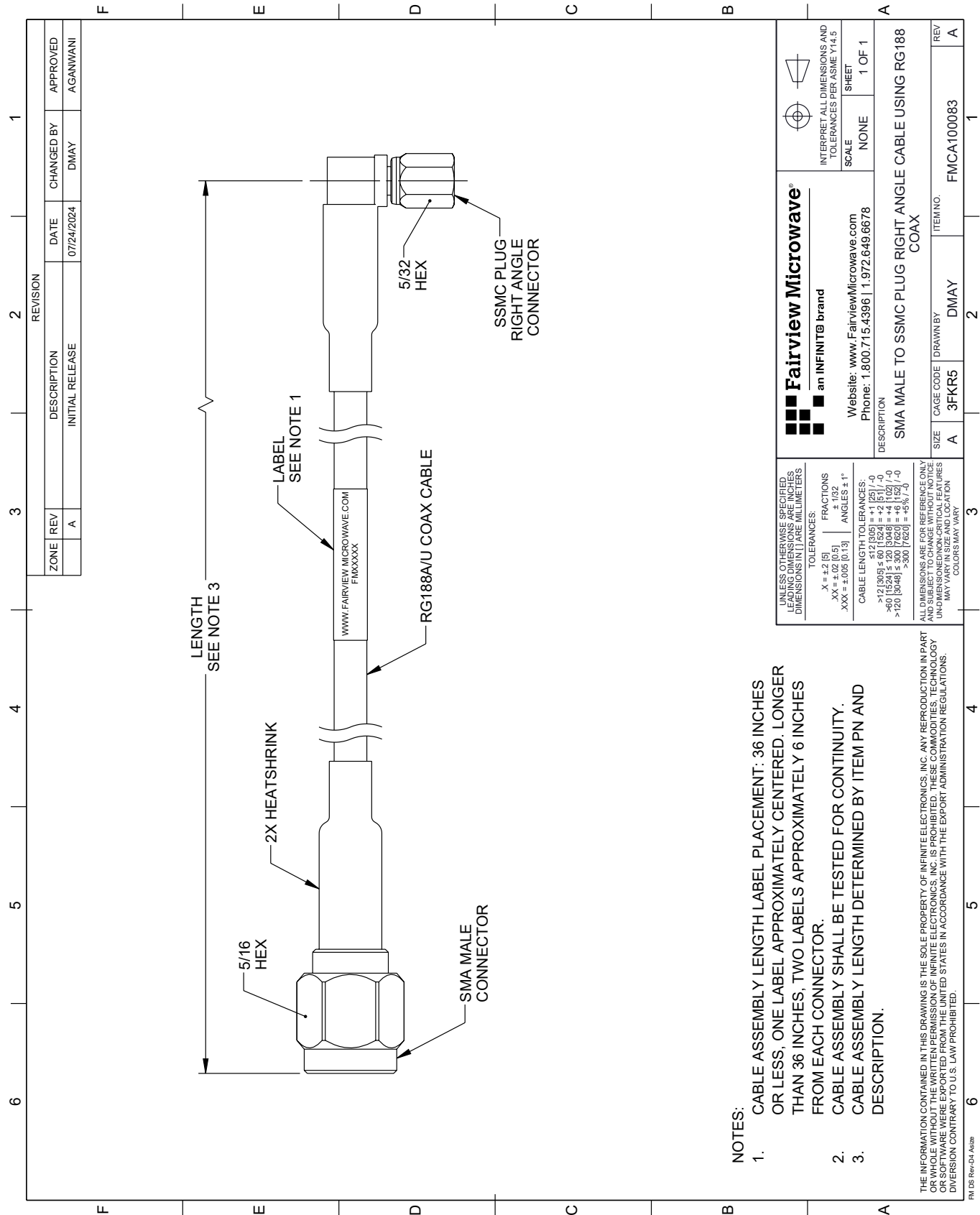
SMA Male to RA SSMC Plug Cable RG-188 Coax from Fairview Microwave is in-stock and available to ship same-day. All of our RF/microwave products are available off-the-shelf from our ISO 9001:2008 certified facilities in Lewisville, Texas. Fairview Microwave is RF on-demand.

For additional information on this product, please click the following link: [SMA Male to RA SSMC Plug Cable RG-188 Coax FMCA100083](#)

URL: <https://www.fairviewmicrowave.com/sma-male-to-ra-ssmc-plug-cable-rg188-coax-fmca100083-p.aspx>

The information contained within this document is accurate to the best of our knowledge and representative of the part described herein. It may be necessary to make modifications to the part and/or the documentation of the part in order to implement improvements. Fairview Microwave reserves the right to make such changes as required. Unless otherwise stated, all specifications are nominal. Fairview Microwave does not make any representation or warranty regarding the suitability of the part described herein for any particular purpose, and Fairview Microwave does not assume liability arising out of the use of any part or document.

FMCA100083 CAD Drawing
SMA Male to RA SSMC Plug Cable RG-188 Coax



- NOTES:
- CABLE ASSEMBLY LENGTH LABEL PLACEMENT: 36 INCHES OR LESS, ONE LABEL APPROXIMATELY CENTERED. LONGER THAN 36 INCHES, TWO LABELS APPROXIMATELY 6 INCHES FROM EACH CONNECTOR.
 - CABLE ASSEMBLY SHALL BE TESTED FOR CONTINUITY.
 - CABLE ASSEMBLY LENGTH DETERMINED BY ITEM PN AND DESCRIPTION.

THE INFORMATION CONTAINED IN THIS DRAWING IS THE SOLE PROPERTY OF INFINITE ELECTRONICS, INC. ANY REPRODUCTION IN PART OR WHOLE WITHOUT THE WRITTEN PERMISSION OF INFINITE ELECTRONICS, INC. IS PROHIBITED. THESE COMMODITIES, TECHNOLOGY OR SOFTWARE WERE EXPORTED FROM THE UNITED STATES IN ACCORDANCE WITH THE EXPORT ADMINISTRATION REGULATIONS. DIVISION CONTRARY TO U.S. LAW PROHIBITED.

FM DS Rev-D4 A424a