

SMA Male to RP SMA Plug Cable RG-188 Coax in 12 Inch



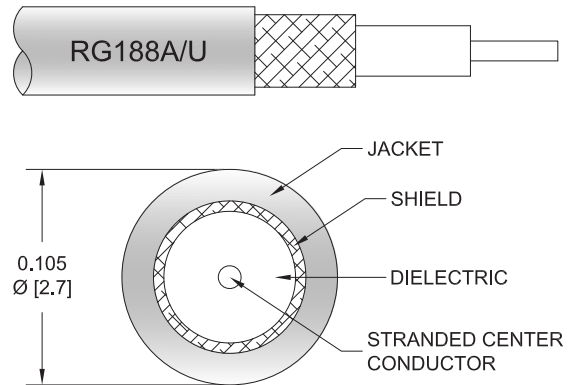
FMCA100081-12

Configuration

- Connector 1: SMA Male
- Connector 2: SMA Plug Reverse Polarity
- Cable Type: RG-188
- Coax Flex Type: Flexible

Features

- Max Frequency 12.4 GHz
- PTFE Jacket



Applications

- General Purpose
- Laboratory Use

Description

The SMA male to RP SMA plug 12 inch cable using RG188 coax, part number FMCA100081-12, from Fairview Microwave is in-stock and ships same day. This Fairview SMA to reverse polarity SMA cable assembly has a male to plug gender configuration with 50 ohm flexible RG-188 coax. Fairview Microwave's flexible RF cable assemblies are ideal for applications where tight bends and continual flexure are required. The FMCA100081-12 SMA male to reverse polarity SMA plug cable assembly operates to 12.4 GHz.

Custom versions of most RF cable assemblies can be built and shipped same day. Custom cable assembly lengths can be obtained by specifying the desired length on the web site at time of order or by contacting a sales representative. Other RF cable assembly value added services including connector orientation or clocking, heat shrink booting and labeling are also available. RF testing can also be performed to document the electrical performance of your cable assembly.

Electrical Specifications

Description	Minimum	Typical	Maximum	Units
Frequency Range	DC		12.4	GHz
VSWR			1.4:1	

Mechanical Specifications

Cable Assembly

Length	12 in [304.8 mm]
Width/Diameter	0.5 in [12.7 mm]
Weight	0.031 lbs [14.06 g]

Cable

Cable Type	RG-188
Impedance	50 Ohms
Inner Conductor Type	Stranded
Inner Conductor Material and Plating	Copper Clad Steel, Silver

SMA Male to RP SMA Plug Cable RG-188 Coax in 12 Inch



FMCA100081-12

Dielectric Type	PTFE
Number of Shields	1
Shield Layer 1	Silver Plated Copper Braid
Jacket Material	PTFE, White
Jacket Diameter	0.11 in [2.79 mm]

Connectors

Description	Connector 1	Connector 2
Type	SMA Male	SMA Plug Reverse Polarity
Specification	MIL-STD-348A	MIL-STD-348
Impedance	50 Ohms	50 Ohms
Configuration	Straight	Straight
Contact Material and Plating	Brass, Gold	Gold
Contact Plating Specification	50 µin minimum	MIL-G-45204
Dielectric Type	PTFE	PTFE
Body Material and Plating	Brass, Gold	Brass, Nickel
Body Plating Specification	3 µin minimum	QQ-N-290
Coupling Nut Material and Plating	Brass, Gold	Brass, Nickel
Coupling Nut Plating Specification	3 µin minimum	QQ-N-290
Hex Size	5/16 inch	5/16 inch
Torque		5 in-lbs 0.57 Nm

Environmental Specifications

Compliance Certifications (see [product page](#) for current document)

Plotted and Other Data

Notes:

SMA Male to RP SMA Plug Cable RG-188 Coax in 12 Inch



FMCA100081-12

Typical Performance Data

How to Order

Part Number Configuration:

FMCA100081

- xx

uu

Unit of Measure:

cm = Centimeters

<blank> = Inches

Length

Base Number

Example: FMCA100081-12 = 12 inches long cable
FMCA100081-100cm = 100 cm long cable

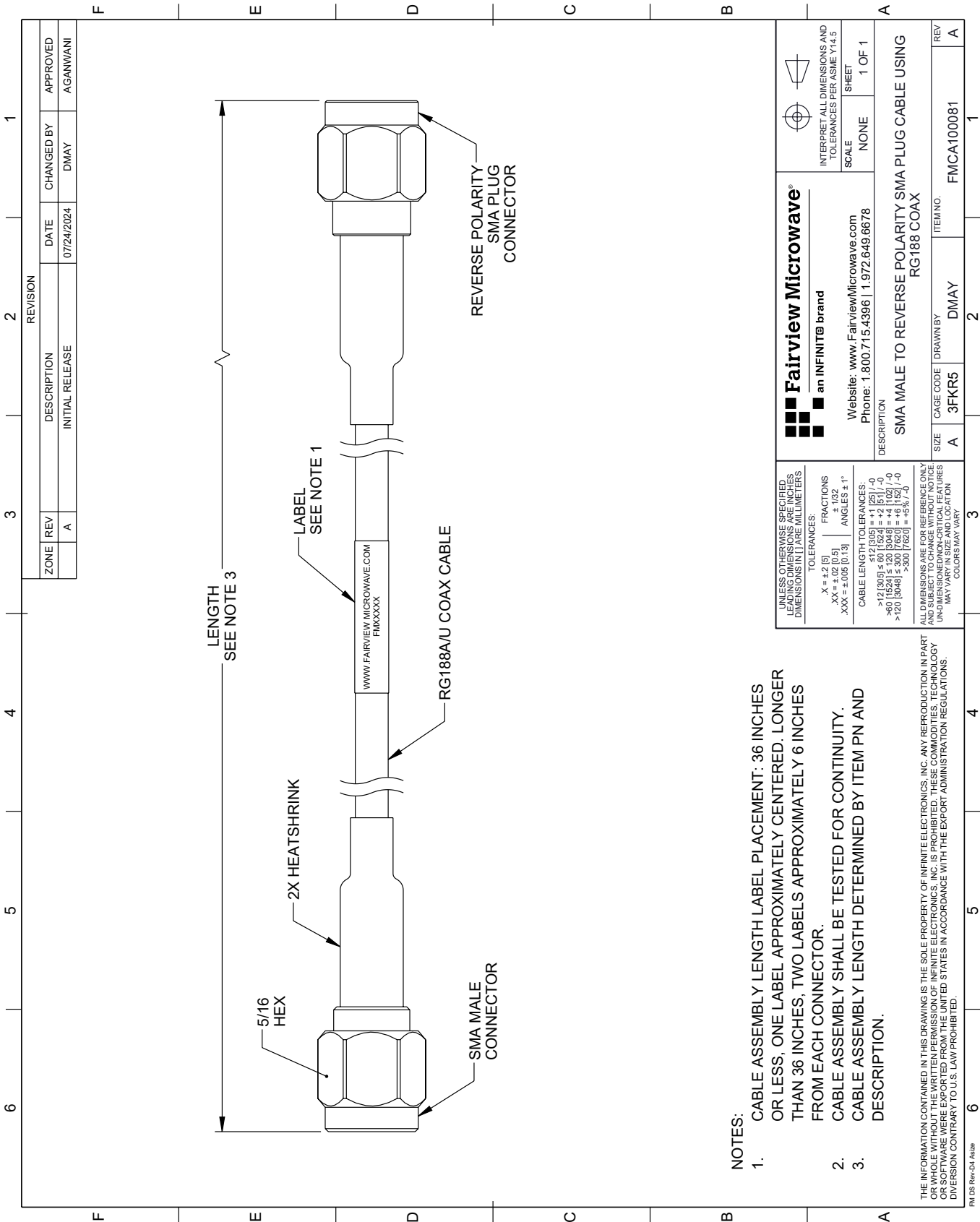
SMA Male to RP SMA Plug Cable RG-188 Coax in 12 Inch from Fairview Microwave is in-stock and available to ship same-day. All of our RF/microwave products are available off-the-shelf from our ISO 9001:2008 certified facilities in Lewisville, Texas. Fairview Microwave is RF on-demand.

For additional information on this product, please click the following link: [SMA Male to RP SMA Plug Cable RG-188 Coax in 12 Inch FMCA100081-12](https://www.fairviewmicrowave.com/sma-male-to-rp-sma-plug-cable-rg188-coax-in-12-inch-fmca100081-12-p.aspx)



URL: <https://www.fairviewmicrowave.com/sma-male-to-rp-sma-plug-cable-rg188-coax-in-12-inch-fmca100081-12-p.aspx>

The information contained within this document is accurate to the best of our knowledge and representative of the part described herein. It may be necessary to make modifications to the part and/or the documentation of the part in order to implement improvements. Fairview Microwave reserves the right to make such changes as required. Unless otherwise stated, all specifications are nominal. Fairview Microwave does not make any representation or warranty regarding the suitability of the part described herein for any particular purpose, and Fairview Microwave does not assume liability arising out of the use of any part or document.

FMCA100081-12 CAD Drawing
SMA Male to RP SMA Plug Cable RG-188 Coax in 12 Inch



- NOTES:
- 1. CABLE ASSEMBLY LENGTH LABEL PLACEMENT: 36 INCHES OR LESS, ONE LABEL APPROXIMATELY CENTERED. LONGER THAN 36 INCHES, TWO LABELS APPROXIMATELY 6 INCHES FROM EACH CONNECTOR.
 - 2. CABLE ASSEMBLY SHALL BE TESTED FOR CONTINUITY.
 - 3. CABLE ASSEMBLY LENGTH DETERMINED BY ITEM PN AND DESCRIPTION.

Fairview Microwave® an INFINITI® brand		 		INTERPRET ALL DIMENSIONS AND TOLERANCES PER ASME Y14.5	
UNLESS OTHERWISE SPECIFIED, LEADING DIMENSIONS ARE INCHES. DIMENSIONS IN [] ARE MILLIMETERS.		Website: www.FairviewMicrowave.com Phone: 1.800.715.4396 1.972.649.6678		SCALE NONE	
TOLERANCES: X = ±.2 [5] .XX = ±.02 [0.5] .XXX = ±.005 [0.13]		FRACTIONS ± 1/32 ANGLES ± 1°		SHEET 1 OF 1	
CABLE LENGTH TOLERANCES: ≤ 12 [305] = ±.125 [-.0] >12 [305] ≤ 60 [1524] = ±.110 [-.0] >60 [1524] ≤ 120 [3048] = ±.102 [-.0] >120 [3048] ≤ 300 [7620] = ±.052 [-.0] 300 [7620] = ±.05 [-.0]		DESCRIPTION SMA MALE TO REVERSE POLARITY SMA PLUG CABLE USING RG188 COAX			
ALL DIMENSIONS ARE FOR REFERENCE ONLY AND SUBJECT TO CHANGE WITHOUT NOTICE. UNLESS OTHERWISE SPECIFIED, DIMENSIONS ARE IN INCHES. DIMENSIONS IN [] ARE MILLIMETERS. COLORS MAY VARY.		SIZE A		CAGE CODE 3FKR5	
DRAWN BY DMAY		ITEM NO. FMCA100081		REV A	

THE INFORMATION CONTAINED IN THIS DRAWING IS THE SOLE PROPERTY OF INFINITE ELECTRONICS, INC. ANY REPRODUCTION IN PART OR WHOLE WITHOUT THE WRITTEN PERMISSION OF INFINITE ELECTRONICS, INC. IS PROHIBITED. THESE COMMODITIES, TECHNOLOGY OR SOFTWARE WERE EXPORTED FROM THE UNITED STATES IN ACCORDANCE WITH THE EXPORT ADMINISTRATION REGULATIONS. DIVISION CONTRARY TO U.S. LAW PROHIBITED.