

## Plenum Low Loss BNC Male to SMA Male Cable LMR-240-LLPX Coax with Times Microwave Components



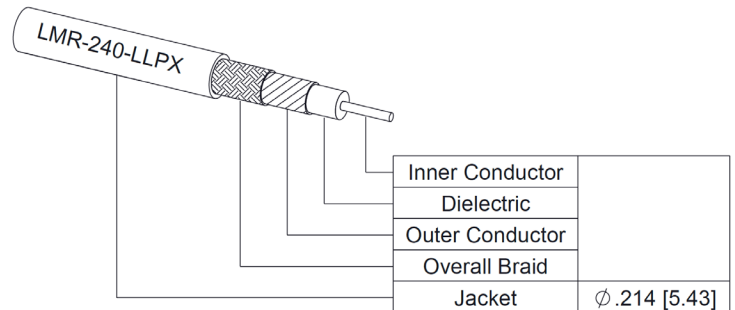
### FMCA100039

#### Configuration

- Connector 1: BNC Male
- Connector 2: SMA Male
- Cable Type: LMR-240-LLPX

#### Features

- Max Frequency 4 GHz
- Shielding Effectivity > 90 dB
- 76% Phase Velocity
- Fluoropolymer Jacket



#### Applications

- General Purpose
- Laboratory Use

#### Description

The BNC male to SMA male cable using LMR-240-LLPX coax, part number FMCA100039, from Fairview Microwave is in-stock and ships same day. This Fairview BNC to SMA cable assembly has a male to male gender configuration with 50 ohm LMR-240-LLPX coax. The FMCA100039 BNC male to SMA male cable assembly operates to 4 GHz.

Custom versions of most RF cable assemblies can be built and shipped same day. Custom cable assembly lengths can be obtained by specifying the desired length on the web site at time of order or by contacting a sales representative. Other RF cable assembly value added services including connector orientation or clocking, heat shrink booting and labeling are also available. RF testing can also be performed to document the electrical performance of your cable assembly.

#### Electrical Specifications

Description	Minimum	Typical	Maximum	Units
Frequency Range	DC		4	GHz
VSWR			1.4:1	
Velocity of Propagation		76		%
RF Shielding	90			dB
Capacitance		26.7 [87.6]		pF/ft [pF/m]
Inductance		0.067 [0.22]		uH/ft [uH/m]
DC Resistance Inner Conductor		4 [13.12]		Ohms/1000ft [Ohms/Km]
DC Resistance Outer Conductor		3.9 [12.8]		Ohms/1000ft [Ohms/Km]
Jacket Spark			5,000	Vrms

#### Specifications by Frequency

Plenum Low Loss BNC Male to SMA Male Cable LMR-240-LLPX Coax with Times Microwave Components



**FMCA100039**

Part Number	Length	Description	F1	F2	F3	F4	F5	Units	Weight (lbs)
			Frequency	100	250	500	1000	4000	
FMCA100039	Custom Lengths Available	Insertion Loss (Typ.)	0.023	0.038	0.056	0.079	0.163	dB/ft	
			0.08	0.13	0.19	0.26	0.54	dB/m	
FMCA100039-12	12 Inch	Insertion Loss (Typ.)	0.16	0.19	0.23	0.28	0.47	dB	0.155
FMCA100039-24	24 Inch	Insertion Loss (Typ.)	0.18	0.23	0.29	0.36	0.63	dB	0.191
FMCA100039-36	36 Inch	Insertion Loss (Typ.)	0.21	0.27	0.34	0.44	0.79	dB	0.226
FMCA100039-48	48 Inch	Insertion Loss (Typ.)	0.23	0.31	0.4	0.52	0.96	dB	0.261
FMCA100039-60	60 Inch	Insertion Loss (Typ.)	0.25	0.34	0.46	0.6	1.12	dB	0.296

The insertion loss data for the base model does not include loss due to the connectors. Each length includes insertion loss due to the connectors.

Loss due to Connector 1: 0.1\*SQRT(FGHz) dB  
 Loss due to Connector 2: 0.1 dB  
 Base Weight: 0.155 pounds  
 Additional Weight per Inch: 0.4983 pounds

**Mechanical Specifications**

**Cable Assembly**

Width/Diameter: 0.5 in [12.7 mm]  
 Weight: 0.155 lbs [70.31 g]

**Cable**

Cable Type: LMR-240-LLPX  
 Impedance: 50 Ohms  
 Inner Conductor Material and Plating: Copper  
 Dielectric Type: PTFE  
 Outer Conductor 1 Material and Plating: Aluminum Tape  
 Jacket Material: Fluoropolymer  
 Jacket Diameter: 0.214 in [5.44 mm]  
 One Time Minimum Bend Radius: 0.75 in [19.05 mm]  
 Repeated Minimum Bend Radius: 2.5 in [63.5 mm]  
 Flat Plate Crush: 85 lbs/in [1.52 Kg/mm]  
 Tensile Strength: 60 lbs [27.22 Kg]

Plenum Low Loss BNC Male to SMA Male Cable LMR-240-LLPX Coax with Times Microwave Components



**FMCA100039**

**Connectors**

Description	Connector 1	Connector 2
Type	BNC Male	SMA Male
Specification		MIL-STD-348
Impedance	50 Ohms	50 Ohms
Configuration	Straight	Straight
Mating Cycles	500	
Contact Material and Plating	Beryllium Copper, Gold	Beryllium Copper, Gold
Contact Plating Specification	50 µin minimum	ASTM B488
Dielectric Type	PTFE	PTFE
Outer Conductor Material and Plating		Brass, Tri-Metal
Body Material and Plating	Brass, Tri-Metal	Brass, Tri-Metal
Body Plating Specification	80 µin minimum	
Coupling Nut Material and Plating		Brass, Tri-Metal
Hex Size		5/16 Inch

**Environmental Specifications**

Operating Range Temperature -40 to +125 deg C

**Compliance Certifications** (see [product page](#) for current document)

**Plotted and Other Data**

Notes:

## Plenum Low Loss BNC Male to SMA Male Cable LMR-240-LLPX Coax with Times Microwave Components



### FMCA100039

#### Typical Performance Data

#### How to Order

Part Number Configuration:

**FMCA100039**

- **xx**

**uu**

Unit of Measure:  
cm = Centimeters  
<blank> = Inches  
Length  
Base Number

Example: FMCA100039-12 = 12 inches long cable  
FMCA100039-100cm = 100 cm long cable

Plenum Low Loss BNC Male to SMA Male Cable LMR-240-LLPX Coax with Times Microwave Components from Fairview Microwave is in-stock and available to ship same-day. All of our RF/microwave products are available off-the-shelf from our ISO 9001:2008 certified facilities in Lewisville, Texas. Fairview Microwave is RF on-demand.

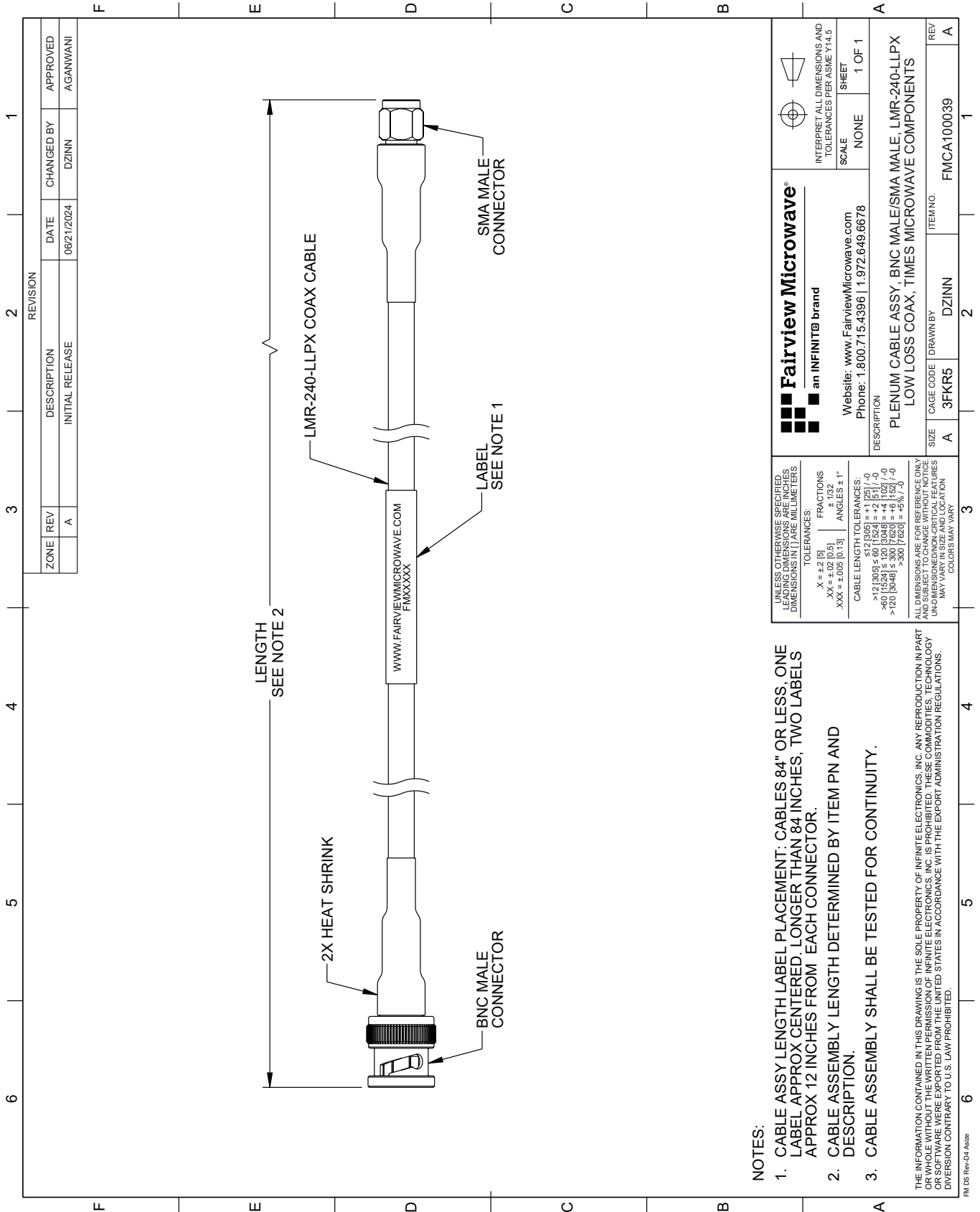
For additional information on this product, please click the following link: [Plenum Low Loss BNC Male to SMA Male Cable LMR-240-LLPX Coax with Times Microwave Components FMCA100039](#)

URL: <https://www.fairviewmicrowave.com/plenum-low-loss-bnc-male-to-sma-male-cable-lmr-240-llpx-coax-with-times-microwave-components-fmca100039-p.aspx>

The information contained within this document is accurate to the best of our knowledge and representative of the part described herein. It may be necessary to make modifications to the part and/or the documentation of the part in order to implement improvements. Fairview Microwave reserves the right to make such changes as required. Unless otherwise stated, all specifications are nominal. Fairview Microwave does not make any representation or warranty regarding the suitability of the part described herein for any particular purpose, and Fairview Microwave does not assume liability arising out of the use of any part or document.

# FMCA100039 CAD Drawing

Plenum Low Loss BNC Male to SMA Male Cable LMR-240-LLPX Coax with Times Microwave Components



REVISION		DATE	CHANGED BY	APPROVED	
ZONE	REV	DESCRIPTION	DATE	CHANGED BY	APPROVED
	A	INITIAL RELEASE	06/21/2024	DZINN	AGANWANI

 <b>Fairview Microwave®</b> an INFINIT® brand Website: <a href="http://www.FairviewMicrowave.com">www.FairviewMicrowave.com</a> Phone: 1.800.715.4396   1.972.649.6678		 INTERPRET ALL DIMENSIONS AND TOLERANCES PER ASME Y14.5 SCALE NONE SHEET 1 OF 1
DESCRIPTION <b>PLENUM CABLE ASSY, BNC MALE/SMA MALE, LMR-240-LLPX LOW LOSS COAX, TIMES MICROWAVE COMPONENTS</b>		
SIZE	CAGE CODE	ITEM NO.
A	3FKR5	FMCA100039
DRAWN BY	DZINN	REV
		A

**NOTES:**

- CABLE ASSY LENGTH LABEL PLACEMENT: CABLES 84" OR LESS, ONE LABEL APPROX CENTERED, LONGER THAN 84 INCHES, TWO LABELS APPROX 12 INCHES FROM EACH CONNECTOR.
- CABLE ASSEMBLY LENGTH DETERMINED BY ITEM PN AND DESCRIPTION.
- CABLE ASSEMBLY SHALL BE TESTED FOR CONTINUITY.

UNLESS OTHERWISE SPECIFIED, LEADING DIMENSIONS ARE IN INCHES, DIMENSIONS IN [ ] ARE MILLIMETERS

TOLERANCES:  
 .X = ±.2 [5]      FRACTIONS ± 1/32  
 .XX = ±.02 [0.5]      ANGLES ± 1°  
 .XXX = ±.005 [0.13]

CABLE LENGTH TOLERANCES:  
 <12 [305] ≤ 60 [1524] = ±.1 [25] / -0  
 >60 [1524] ≤ 120 [3048] = ±.4 [102] / -0  
 >120 [3048] ≤ 300 [7620] = ±.6 [152] / -0  
 >300 [7620] = ±.8 [127] / -0

ALL DIMENSIONS ARE FOR REFERENCE ONLY. UNDIMENSIONED/NON-CRITICAL FEATURES MAY VARY IN SIZE AND LOCATION. COLORS MAY VARY.

THE INFORMATION CONTAINED IN THIS DRAWING IS THE SOLE PROPERTY OF INFINITE ELECTRONICS, INC. ANY REPRODUCTION IN PART OR WHOLE WITHOUT THE WRITTEN PERMISSION OF INFINITE ELECTRONICS, INC. IS PROHIBITED. THESE COMMODITIES, TECHNOLOGY OR SOFTWARE WERE EXPORTED FROM THE UNITED STATES IN ACCORDANCE WITH THE EXPORT ADMINISTRATION REGULATIONS. DIVERSION CONTRARY TO U.S. LAW PROHIBITED.

FM DS Rev-D4 Alt2b