

## RA BNC Male to BNC Female Bulkhead Cable RG-188 Coax

**FMCA10002**

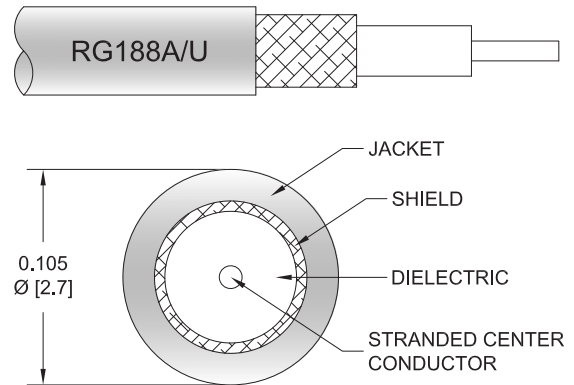


### Configuration

- Connector 1: BNC Male Right Angle
- Connector 2: BNC Female Bulkhead
- Cable Type: RG-188
- Coax Flex Type: Flexible

### Features

- Max Frequency 2 GHz
- PTFE Jacket



### Applications

- General Purpose
- Laboratory Use

### Description

The RA BNC male to BNC female bulkhead cable using RG188 coax, part number FMCA10002, from Fairview Microwave is in-stock and ships same day. This Fairview BNC to BNC cable assembly has a male to female gender configuration with 50 ohm flexible RG-188 coax. Fairview Microwave's flexible RF cable assemblies are ideal for applications where tight bends and continual flexure are required. The FMCA10002 BNC male to BNC female cable assembly operates to 2 GHz. The right angle BNC interface on the RG-188 cable allows for easier connections in tight spaces. Our RF cable assembly with BNC bulkhead interface allows designers to create external connections on their product enclosures, and can be used in a variety of other rack mount and panel mount applications.

Custom versions of most RF cable assemblies can be built and shipped same day. Custom cable assembly lengths can be obtained by specifying the desired length on the web site at time of order or by contacting a sales representative. Other RF cable assembly value added services including connector orientation or clocking, heat shrink booting and labeling are also available. RF testing can also be performed to document the electrical performance of your cable assembly.

### Electrical Specifications

Description	Minimum	Typical	Maximum	Units
Frequency Range	DC		2	GHz
VSWR			1.4:1	
Operating Voltage (AC)			335	Vrms

### Mechanical Specifications

#### Cable Assembly

Weight 0.106 lbs [48.08 g]

#### Cable

Cable Type RG-188  
Impedance 50 Ohms

## RA BNC Male to BNC Female Bulkhead Cable RG-188 Coax

### FMCA10002



Inner Conductor Type	Stranded
Inner Conductor Material and Plating	Copper Clad Steel, Silver
Dielectric Type	PTFE
Number of Shields	1
Shield Layer 1	Silver Plated Copper Braid
Jacket Material	PTFE, White
Jacket Diameter	0.11 in [2.79 mm]

### Connectors

Description	Connector 1	Connector 2
Type	BNC Male Right Angle	BNC Female Bulkhead
Specification		MIL-STD-348A
Impedance	50 Ohms	50 Ohms
Configuration	Right Angle	Straight
Contact Material and Plating	Brass, Gold	Brass, Gold
Contact Plating Specification	30 µin minimum	30 µin minimum
Dielectric Type	PTFE	PTFE
Outer Conductor Material and Plating		Brass, Nickel
Outer Conductor Plating Specification		100 µin minimum
Body Material and Plating	Brass, Nickel	
Body Plating Specification	100 µin minimum	
Coupling Nut Material and Plating	Brass, Nickel	
Coupling Nut Plating Specification	100 µin minimum	

### Environmental Specifications

Operating Range Temperature	-55 to +165 deg C
-----------------------------	-------------------

### Compliance Certifications (see [product page](#) for current document)

### Plotted and Other Data

Notes:

## RA BNC Male to BNC Female Bulkhead Cable RG-188 Coax



### FMCA10002

#### Typical Performance Data

#### How to Order

Part Number Configuration:

**FMCA10002**

**- xx**

**uu**

Unit of Measure:

cm = Centimeters

<blank> = Inches

Length

Base Number

Example: FMCA10002-12 = 12 inches long cable  
FMCA10002-100cm = 100 cm long cable

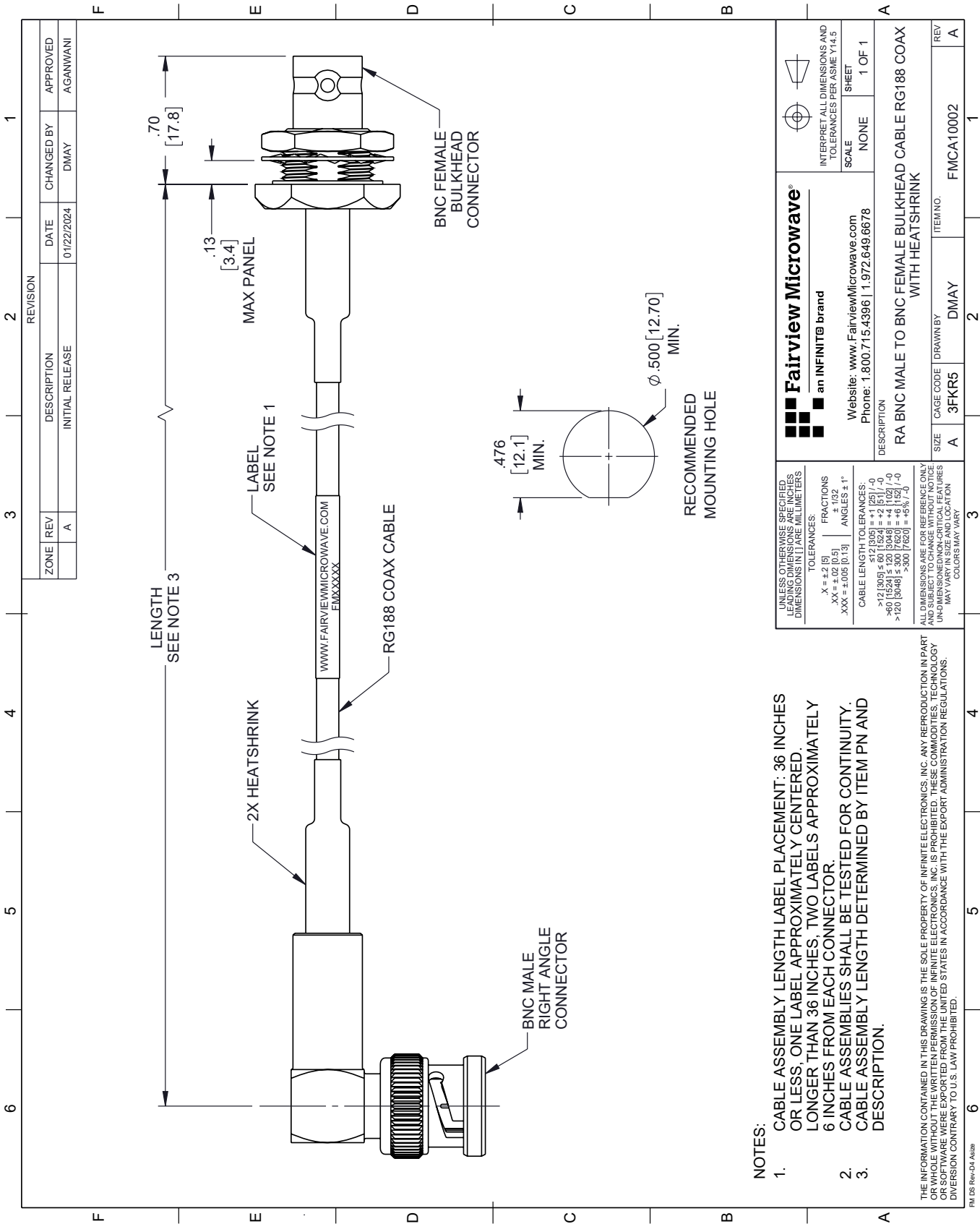
RA BNC Male to BNC Female Bulkhead Cable RG-188 Coax from Fairview Microwave is in-stock and available to ship same-day. All of our RF/microwave products are available off-the-shelf from our ISO 9001:2008 certified facilities in Lewisville, Texas. Fairview Microwave is RF on-demand.

For additional information on this product, please click the following link: [RA BNC Male to BNC Female Bulkhead Cable RG-188 Coax FMCA10002](#)

URL: <https://www.fairviewmicrowave.com/ra-bnc-male-to-bnc-female-bulkhead-cable-rg-188-coax-fmca10002-p.aspx>

The information contained within this document is accurate to the best of our knowledge and representative of the part described herein. It may be necessary to make modifications to the part and/or the documentation of the part in order to implement improvements. Fairview Microwave reserves the right to make such changes as required. Unless otherwise stated, all specifications are nominal. Fairview Microwave does not make any representation or warranty regarding the suitability of the part described herein for any particular purpose, and Fairview Microwave does not assume liability arising out of the use of any part or document.

FMCA10002 CAD Drawing
RA BNC Male to BNC Female Bulkhead Cable RG-188 Coax



- NOTES:
- CABLE ASSEMBLY LENGTH LABEL PLACEMENT: 36 INCHES OR LESS; ONE LABEL APPROXIMATELY CENTERED. LONGER THAN 36 INCHES, TWO LABELS APPROXIMATELY 6 INCHES FROM EACH CONNECTOR.
  - CABLE ASSEMBLIES SHALL BE TESTED FOR CONTINUITY.
  - CABLE ASSEMBLY LENGTH DETERMINED BY ITEM PN AND DESCRIPTION.

THE INFORMATION CONTAINED IN THIS DRAWING IS THE SOLE PROPERTY OF INFINITE ELECTRONICS, INC. ANY REPRODUCTION IN PART OR WHOLE WITHOUT THE WRITTEN PERMISSION OF INFINITE ELECTRONICS, INC. IS PROHIBITED. THESE COMMODITIES, TECHNOLOGY OR SOFTWARE WERE EXPORTED FROM THE UNITED STATES IN ACCORDANCE WITH THE EXPORT ADMINISTRATION REGULATIONS. DIVISION CONTRARY TO U.S. LAW PROHIBITED.

UNLESS OTHERWISE SPECIFIED, LEADING DIMENSIONS ARE IN INCHES. DIMENSIONS IN [ ] ARE MILLIMETERS.		Fairview Microwave® an INFINITI® brand		INTERPRET ALL DIMENSIONS AND TOLERANCES PER ASME Y14.5	
TOLERANCES:		Website: www.FairviewMicrowave.com Phone: 1.800.715.4396   1.972.649.6678		SCALE: NONE	
X = ±.2 [5] .XX = ±.02 [0.5] .XXX = ±.005 [0.13]		FRACTIONS: ± 1/32 ANGLES: ± 1°		SHEET: 1 OF 1	
CABLE LENGTH TOLERANCES:		DESCRIPTION		RA BNC MALE TO BNC FEMALE BULKHEAD CABLE RG188 COAX WITH HEATSHRINK	
>12 [305] ≤ 60 [1524] = ±.125 [-0]		SIZE		A	
>60 [1524] ≤ 120 [3048] = ±.110 [-0]		CAGE CODE		3FKR5	
>120 [3048] ≤ 300 [7620] = ±.063 [-0]		DRAWN BY		DMAY	
ALL DIMENSIONS ARE FOR REFERENCE ONLY. UNDIMENSIONED/NON-CRITICAL FEATURES MAY VARY IN SIZE AND LOCATION. COLORS MAY VARY.		ITEM NO.		FMCA10002	
		REV		A	