

## 2.4mm Male to 2.4mm Male Cable FM160FLEX Coax in 150 cm

### FMC4040914-150CM



#### Configuration

- Connector 1: 2.4mm Male
- Connector 2: 2.4mm Male
- Cable Type: FM-160FLEX
- Coax Flex Type: Flexible

#### Features

- Max Frequency 40 GHz
- Shielding Effectivity > 90 dB
- 78% Phase Velocity
- Triple Shielded
- ETFE Jacket
- Max Frequency 40 GHz
- Shielding Effectivity > 90 dB
- 78% Phase Velocity
- Triple Shielded
- ETFE Jacket

#### Applications

- General Purpose
- Laboratory Use
- General Purpose
- Laboratory Use

#### Description

The 2.4mm male to 2.4mm male 150 cm cable using FM160FLEX coax, part number FMC4040914-150CM, from Fairview Microwave is in-stock and ships same day. This Fairview 2.4mm to 2.4mm cable assembly has a male to male gender configuration with 50 ohm flexible FM-160FLEX coax. Fairview Microwave's flexible RF cable assemblies are ideal for applications where tight bends and continual flexure are required. The FMC4040914-150CM 2.4mm male to 2.4mm male cable assembly operates to 40 GHz. The triple shielding of this Fairview cable assembly provides excellent shielding effectiveness of better than 90 dB. The 2.4mm male to 2.4mm male 150 cm cable using FM160FLEX coax, part number FMC4040914-150CM, from Fairview Microwave is in-stock and ships same day. This Fairview 2.4mm to 2.4mm cable assembly has a male to male gender configuration with 50 ohm flexible FM-160FLEX coax. Fairview Microwave's flexible RF cable assemblies are ideal for applications where tight bends and continual flexure are required. The FMC4040914-150CM 2.4mm male to 2.4mm male cable assembly operates to 40 GHz. The triple shielding of this Fairview cable assembly provides excellent shielding effectiveness of better than 90 dB.

Custom versions of most RF cable assemblies can be built and shipped same day. Custom cable assembly lengths can be obtained by specifying the desired length on the web site at time of order or by contacting a sales representative. Other RF cable assembly value added services including connector orientation or clocking, heat shrink booting and labeling are also available. RF testing can also be performed to document the electrical performance of your cable assembly.

Custom versions of most RF cable assemblies can be built and shipped same day. Custom cable assembly lengths can be obtained by specifying the desired length on the web site at time of order or by contacting a sales representative. Other RF cable assembly value added services including connector orientation or clocking, heat shrink booting and labeling are also available. RF testing can also be performed to document the electrical performance of your cable assembly.

2.4mm Male to 2.4mm Male Cable  
FM160FLEX Coax in 150 cm



**FMC4040914-150CM**

**Electrical Specifications**

Description	Minimum	Typical	Maximum	Units
Frequency Range	DC		40	GHz
VSWR			1.5:1	
Velocity of Propagation		78		%
RF Shielding	90			dB
Capacitance		26 [85.3]		pF/ft [pF/m]

**Specifications by Frequency**

Description	F1	F2	F3	F4	F5	Units
Frequency	3	6	12	26	40	GHz
Insertion Loss (Typ.)	1.09	1.58	2.37	3.7	4.78	dB

Electrical Specification Notes:

Insertion loss does not include the loss of the connectors.

Insertion loss is estimated as 0.05 x sqrt(fGHz) dB per connector.

**Mechanical Specifications**

**Cable Assembly**

Length 59.055 in [150 cm]  
Weight 0.2175 lbs [98.66 g]

**Cable**

Cable Type FM-160FLEX  
Impedance 50 Ohms  
Inner Conductor Type Solid  
Inner Conductor Material and Plating Copper, Silver  
Dielectric Type PTFE  
Number of Shields 3  
Shield Layer 1 Silver Plated Copper Braid  
Shield Layer 2 Aluminum Tape  
Shield Layer 3 Silver Plated Copper Braid  
Jacket Material ETFE, Gray  
Jacket Diameter 0.155 in [3.94 mm]  
Repeated Minimum Bend Radius 0.8 in [20.32 mm]  
Typical Flex Cycles 10,000

2.4mm Male to 2.4mm Male Cable  
FM160FLEX Coax in 150 cm



**FMC4040914-150CM**

**Connectors**

Description	Connector 1	Connector 2
Type	2.4mm Male	2.4mm Male
Impedance	50 Ohms	50 Ohms
Configuration	Straight	Straight
Color	SV	SV
Contact Material and Plating	Beryllium Copper, Gold	Beryllium Copper, Gold
Contact Plating Specification	ASTM-B488	ASTM-B488
Dielectric Type	PPO	PPO
Body Material and Plating	Passivated Stainless Steel	Passivated Stainless Steel
Body Plating Specification	SAE-AMS-2700	SAE-AMS-2700
Coupling Nut Material and Plating	Passivated Stainless Steel	Passivated Stainless Steel
Coupling Nut Plating Specification	SAE-AMS-2700	SAE-AMS-2700
Hex Size	5/16 inch	5/16 inch
Torque	8 in-lbs 0.9 Nm	8 in-lbs 0.9 Nm

**Environmental Specifications**

Operating Range Temperature -45 to +125 deg C

**Compliance Certifications** (see [product page](#) for current document)

**Plotted and Other Data**

Notes:

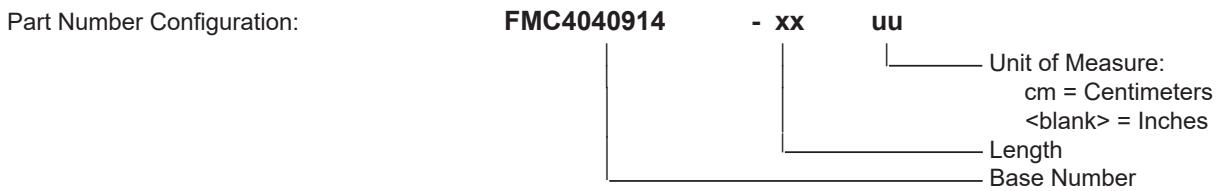
2.4mm Male to 2.4mm Male Cable  
FM160FLEX Coax in 150 cm



**FMC4040914-150CM**

**Typical Performance Data**

**How to Order**



Example: FMC4040914-12 = 12 inches long cable  
FMC4040914-100cm = 100 cm long cable

2.4mm Male to 2.4mm Male Cable FM160FLEX Coax in 150 cm from Fairview Microwave is in-stock and available to ship same-day. All of our RF/microwave products are available off-the-shelf from our ISO 9001:2008 certified facilities in Lewisville, Texas. Fairview Microwave is RF on-demand.

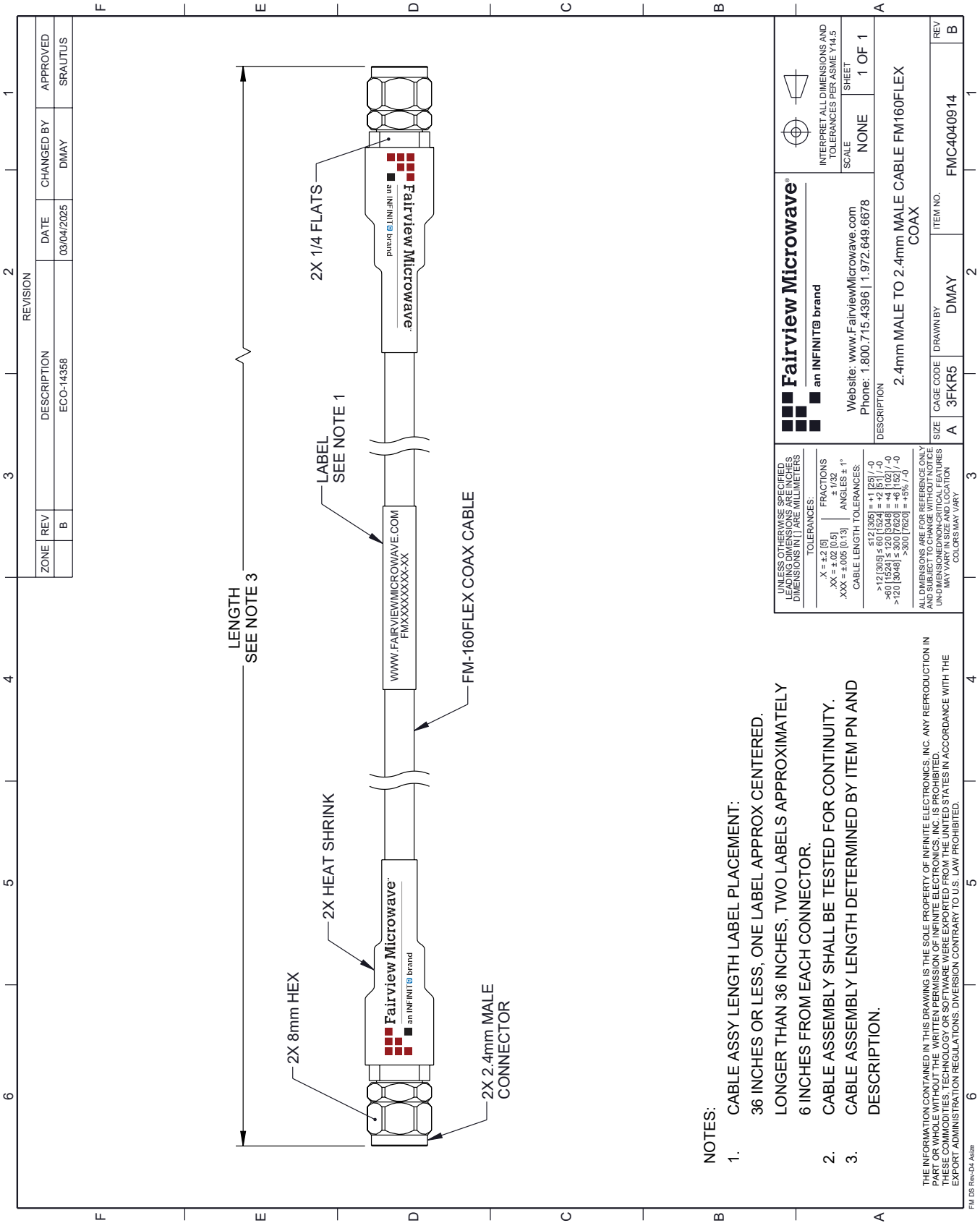
For additional information on this product, please click the following link: [2.4mm Male to 2.4mm Male Cable FM160FLEX Coax in 150 cm FMC4040914-150CM](#)

URL: <https://www.fairviewmicrowave.com/2.4mm-male-2.4mm-male-cable-fm160flex-coax-fmc4040914-150cm-p.aspx>

The information contained within this document is accurate to the best of our knowledge and representative of the part described herein. It may be necessary to make modifications to the part and/or the documentation of the part in order to implement improvements. Fairview Microwave reserves the right to make such changes as required. Unless otherwise stated, all specifications are nominal. Fairview Microwave does not make any representation or warranty regarding the suitability of the part described herein for any particular purpose, and Fairview Microwave does not assume liability arising out of the use of any part or document.

# FMC4040914-150CM CAD Drawing

## 2.4mm Male to 2.4mm Male Cable FM160FLEX Coax in 150 cm



**NOTES:**

- CABLE ASSY LENGTH LABEL PLACEMENT:  
36 INCHES OR LESS, ONE LABEL APPROX CENTERED.  
LONGER THAN 36 INCHES, TWO LABELS APPROXIMATELY 6 INCHES FROM EACH CONNECTOR.
- CABLE ASSEMBLY SHALL BE TESTED FOR CONTINUITY.
- CABLE ASSEMBLY LENGTH DETERMINED BY ITEM PN AND DESCRIPTION.

**Fairview Microwave<sup>®</sup>**  
an INFINITO<sup>®</sup> brand

Website: [www.FairviewMicrowave.com](http://www.FairviewMicrowave.com)  
Phone: 1.800.715.4396 | 1.972.649.6678

UNLESS OTHERWISE SPECIFIED, LEADING DIMENSIONS ARE IN INCHES. DIMENSIONS IN [ ] ARE MILLIMETERS.

TOLERANCES:  
 .X = ±.2 [5]  
 .XX = ±.02 [0.5]  
 .XXX = ±.005 [0.13]  
 FRACTIONS ± 1/32  
 ANGLES ± 1°  
 CABLE LENGTH TOLERANCES:  
 <12 [305] ±.60 [1524] = +1 [25] / -0  
 >12 [305] ±.60 [1524] = +4 [102] / -0  
 >120 [3048] ±.60 [1524] = +5% / -0  
 >300 [7620] ±.60 [1524] = +5% / -0

ALL DIMENSIONS ARE FOR REFERENCE ONLY. UNDIMENSIONED NON-CRITICAL FEATURES MAY VARY IN SIZE AND LOCATION. COLORS MAY VARY.

INTERPRET ALL DIMENSIONS AND TOLERANCES PER ASME Y14.5

SCALE NONE

SHEET 1 OF 1

DESCRIPTION 2.4mm MALE TO 2.4mm MALE CABLE FM160FLEX COAX

SIZE	CAGE CODE	DRAWN BY	ITEM NO.	REV
A	3FKR5	DMAY	FMC4040914	B

THE INFORMATION CONTAINED IN THIS DRAWING IS THE SOLE PROPERTY OF INFINITE ELECTRONICS, INC. ANY REPRODUCTION IN PART OR WHOLE WITHOUT THE WRITTEN PERMISSION OF INFINITE ELECTRONICS, INC. IS PROHIBITED. THESE COMMODITIES, TECHNOLOGY OR SOFTWARE WERE EXPORTED FROM THE UNITED STATES IN ACCORDANCE WITH THE EXPORT ADMINISTRATION REGULATIONS. DIVERSION CONTRARY TO U.S. LAW PROHIBITED.