

MCX Plug (Male) to MCX Plug (Male) Cable
RG-316 Coax Up To 3 GHz in 120 Inch



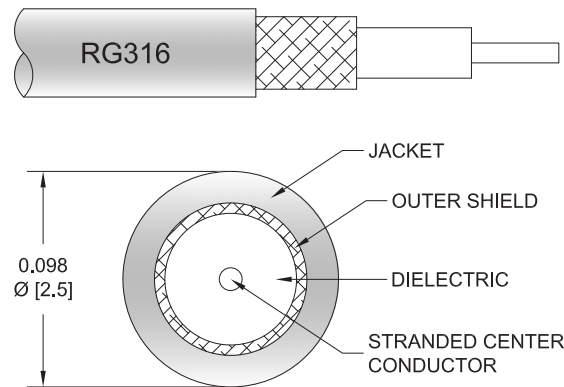
FMC0707315-120

Configuration

- Connector 1: MCX Plug
- Connector 2: MCX Plug
- Cable Type: RG-316
- Coax Flex Type: Flexible

Features

- Max Frequency 3 GHz
- 70% Phase Velocity
- FEP Jacket



Applications

- General Purpose
- Laboratory Use

Description

The MCX plug to MCX plug 120 inch cable using RG-316 coax, part number FMC0707315-120, from Fairview Microwave is in-stock and ships same day. This Fairview MCX to MCX cable assembly has a plug to plug gender configuration with 50 ohm flexible RG-316 coax. Fairview Microwave's flexible RF cable assemblies are ideal for applications where tight bends and continual flexure are required. The FMC0707315-120 MCX plug to MCX plug cable assembly operates to 3 GHz.

Custom versions of most RF cable assemblies can be built and shipped same day. Custom cable assembly lengths can be obtained by specifying the desired length on the web site at time of order or by contacting a sales representative. Other RF cable assembly value added services including connector orientation or clocking, heat shrink booting and labeling are also available. RF testing can also be performed to document the electrical performance of your cable assembly.

Electrical Specifications

Description	Minimum	Typical	Maximum	Units
Frequency Range	DC		3	GHz
Velocity of Propagation		70		%
Capacitance		32 [104.99]		pF/ft [pF/m]

Mechanical Specifications

Cable Assembly

Width/Diameter 0.217 in [5.51 mm]
Weight 0.11746 lbs [53.28 g]

Cable

Cable Type RG-316
Impedance 50 Ohms
Inner Conductor Type Solid

MCX Plug (Male) to MCX Plug (Male) Cable
RG-316 Coax Up To 3 GHz in 120 Inch



FMC0707315-120

Inner Conductor Material and Plating	Copper, Silver
Dielectric Type	PTFE
Number of Shields	1
Shield Layer 1	Silver Plated Copper Tape
Shield Layer 2	Silver Plated Copper Braid
Jacket Material	FEP, Black
Jacket Diameter	0.098 in [2.49 mm]

Connectors

Description	Connector 1	Connector 2
Type	MCX Plug	MCX Plug
Impedance	50 Ohms	50 Ohms
Configuration	Straight	Straight
Color	Silver	
Contact Material and Plating	Brass, Gold	Brass, Gold
Contact Plating Specification	30μ" Minimum	30μ" Minimum
Dielectric Type	Teflon	Teflon
Body Material and Plating	Brass, Gold	Brass, Gold
Body Plating Specification	3μ" Minimum	3μ" Minimum

Environmental Specifications

Operating Range Temperature -55 to +125 deg C

Compliance Certifications (see [product page](#) for current document)

Plotted and Other Data

Notes:

MCX Plug (Male) to MCX Plug (Male) Cable
RG-316 Coax Up To 3 GHz in 120 Inch



FMC0707315-120

Typical Performance Data

How to Order



Example: FMC0707315-12 = 12 inches long cable
FMC0707315-100cm = 100 cm long cable

MCX Plug (Male) to MCX Plug (Male) Cable RG-316 Coax Up To 3 GHz in 120 Inch from Fairview Microwave is in-stock and available to ship same-day. All of our RF/microwave products are available off-the-shelf from our ISO 9001:2008 certified facilities in Lewisville, Texas. Fairview Microwave is RF on-demand.

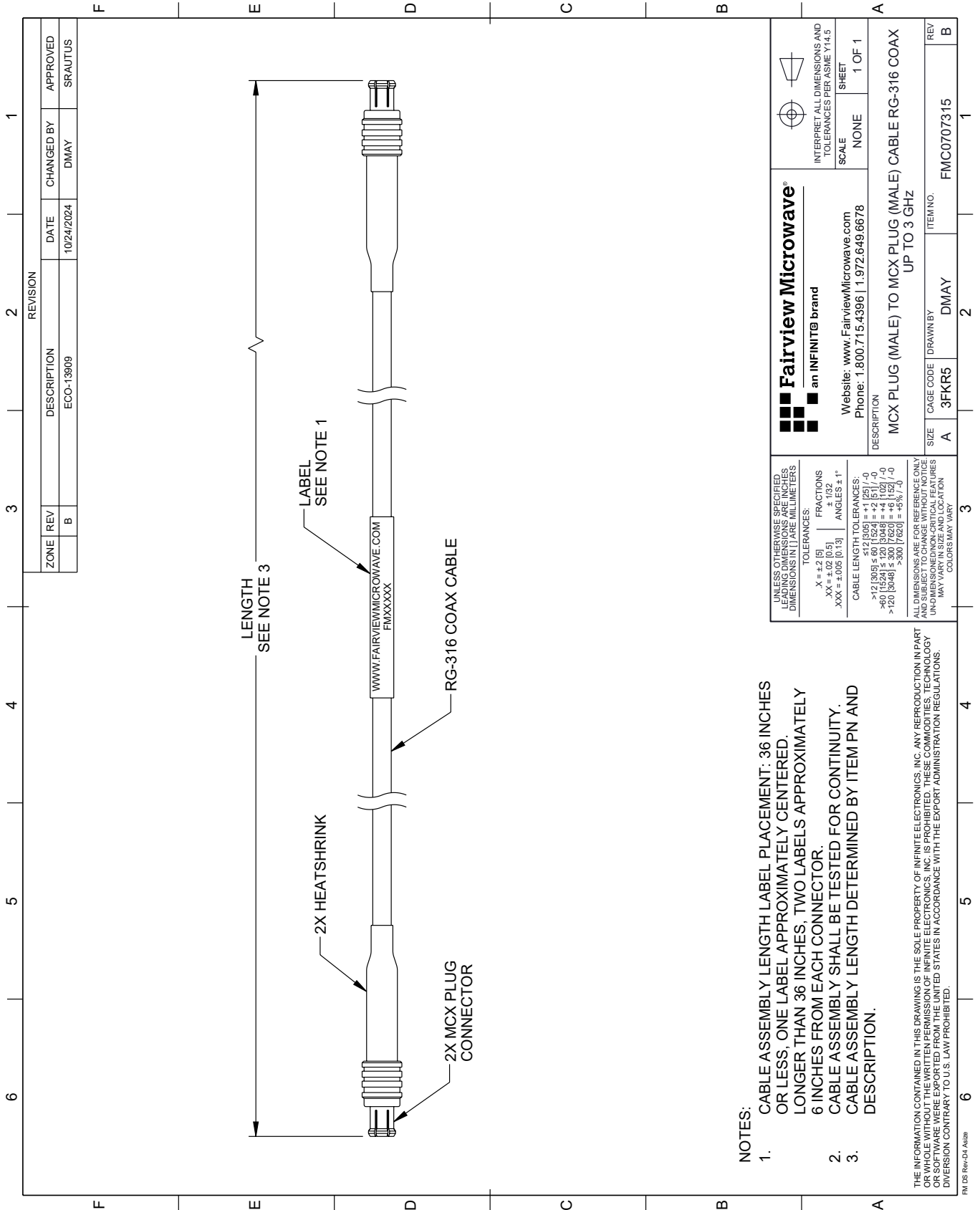
For additional information on this product, please click the following link: [MCX Plug \(Male\) to MCX Plug \(Male\) Cable RG-316 Coax Up To 3 GHz in 120 Inch FMC0707315-120](https://www.fairviewmicrowave.com/mcx-male-mcx-male-cable-rg316-coax-fmc0707315-120-p.aspx)

URL: <https://www.fairviewmicrowave.com/mcx-male-mcx-male-cable-rg316-coax-fmc0707315-120-p.aspx>

The information contained within this document is accurate to the best of our knowledge and representative of the part described herein. It may be necessary to make modifications to the part and/or the documentation of the part in order to implement improvements. Fairview Microwave reserves the right to make such changes as required. Unless otherwise stated, all specifications are nominal. Fairview Microwave does not make any representation or warranty regarding the suitability of the part described herein for any particular purpose, and Fairview Microwave does not assume liability arising out of the use of any part or document.

FMC0707315-120 CAD Drawing

MCX Plug (Male) to MCX Plug (Male) Cable RG-316 Coax Up To 3 GHz in 120 Inch



NOTES:

1. CABLE ASSEMBLY LENGTH LABEL PLACEMENT: 36 INCHES OR LESS, ONE LABEL APPROXIMATELY CENTERED, LONGER THAN 36 INCHES, TWO LABELS APPROXIMATELY 6 INCHES FROM EACH CONNECTOR.
2. CABLE ASSEMBLY SHALL BE TESTED FOR CONTINUITY.
3. CABLE ASSEMBLY LENGTH DETERMINED BY ITEM PN AND DESCRIPTION.

THE INFORMATION CONTAINED IN THIS DRAWING IS THE SOLE PROPERTY OF INFINITE ELECTRONICS, INC. ANY REPRODUCTION IN PART OR WHOLE WITHOUT THE WRITTEN PERMISSION OF INFINITE ELECTRONICS, INC. IS PROHIBITED. THESE COMMODITIES, TECHNOLOGY OR SOFTWARE WERE EXPORTED FROM THE UNITED STATES IN ACCORDANCE WITH THE EXPORT ADMINISTRATION REGULATIONS. DIVERSION CONTRARY TO U.S. LAW PROHIBITED.

FM DS Rev-D4 Alt2b

REVISION		DATE	CHANGED BY	APPROVED	
ZONE	REV	DESCRIPTION	ECO-13909	DMAY	SRAUTUS
	B				

<p>Fairview Microwave an INFINITB brand</p> <p>Website: www.FairviewMicrowave.com Phone: 1.800.715.4396 1.972.649.6678</p>		<p>INTERPRET ALL DIMENSIONS AND TOLERANCES PER ASME Y14.5</p> <p>SCALE: NONE</p> <p>SHEET: 1 OF 1</p>
<p>DESCRIPTION: MCX PLUG (MALE) TO MCX PLUG (MALE) CABLE RG-316 COAX UP TO 3 GHz</p>		
SIZE	CAGE CODE	ITEM NO.
A	3FKR5	DMAY FMC0707315

UNLESS OTHERWISE SPECIFIED, LEADING DIMENSIONS ARE IN INCHES, DIMENSIONS IN [] ARE MILLIMETERS.

TOLERANCES:
 .X = ±.2 [5]
 .XX = ±.02 [0.5]
 .XXX = ±.005 [0.13]
 FRACTIONS ± 1/32
 ANGLES ± 1°

CABLE LENGTH TOLERANCES:
 <12 [305] ≤ 60 [1524] = +2 [51] / -0
 >60 [1524] ≤ 120 [3048] = +4 [102] / -0
 >120 [3048] ≤ 300 [7620] = +5% / -0

ALL DIMENSIONS ARE FOR REFERENCE ONLY. UNDIMENSIONED/NON-CRITICAL FEATURES MAY VARY IN SIZE AND LOCATION. COLORS MAY VARY.