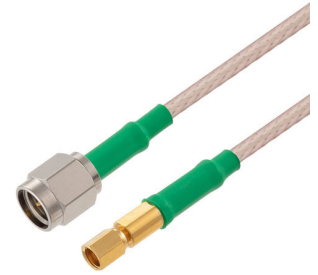


SMA Male to SSMC Plug Cable  
RG-316 Coax in 36 Inch with LF Solder



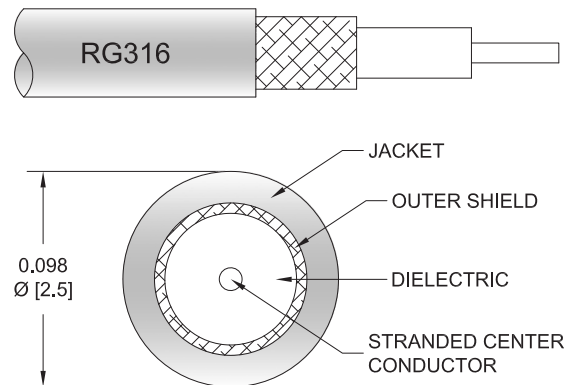
**FMC0234315LF-36**

**Configuration**

- Connector 1: SMA Male
- Connector 2: SSMC Plug
- Cable Type: RG316
- Coax Flex Type: Flexible

**Features**

- Max Frequency 3 GHz
- 70% Phase Velocity
- FEP Jacket



**Applications**

- General Purpose
- Laboratory Use

**Description**

The SMA male to SSMC plug 36 inch cable using RG-316 coax, part number FMC0234315LF-36, from Fairview Microwave is in-stock and ships same day. This Fairview SMA to SSMC cable assembly has a male to plug gender configuration with 50 ohm flexible RG316 coax. Fairview Microwave's flexible RF cable assemblies are ideal for applications where tight bends and continual flexure are required. The FMC0234315LF-36 SMA male to SSMC plug cable assembly operates to 3 GHz.

Custom versions of most RF cable assemblies can be built and shipped same day. Custom cable assembly lengths can be obtained by specifying the desired length on the web site at time of order or by contacting a sales representative. Other RF cable assembly value added services including connector orientation or clocking, heat shrink booting and labeling are also available. RF testing can also be performed to document the electrical performance of your cable assembly.

**Electrical Specifications**

Description	Minimum	Typical	Maximum	Units
Frequency Range	DC		3	GHz
VSWR			1.35:1	
Velocity of Propagation		70		%
Capacitance		32 [104.99]		pF/ft [pF/m]

**Mechanical Specifications**

**Cable Assembly**

Length	36 in [914.4 mm]
Width/Diameter	4 in [101.6 mm]
Weight	0.113 lbs [51.26 g]

**Cable**

Cable Type	RG316
------------	-------

SMA Male to SSMC Plug Cable  
RG-316 Coax in 36 Inch with LF Solder



**FMC0234315LF-36**

Impedance	50 Ohms
Inner Conductor Type	Solid
Inner Conductor Material and Plating	Copper, Silver
Dielectric Type	PTFE
Number of Shields	1
Shield Layer 1	Silver Plated Copper Braid
Jacket Material	FEP, Tan
Jacket Diameter	0.098 in [2.49 mm]

**Connectors**

Description	Connector 1	Connector 2
Type	SMA Male	SSMC Plug
Impedance	50 Ohms	50 Ohms
Configuration	Straight	Straight
Mating Cycles		500
Contact Material and Plating	Brass, Gold	Beryllium Copper, Gold
Contact Plating Specification	50µ in. minimum	MIL-G-45204
Dielectric Type	PTFE	PTFE
Body Material and Plating	Brass, Nickel	Beryllium Copper, Gold
Body Plating Specification	100µ in. minimum	
Coupling Nut Material and Plating		Brass, Gold
Hex Size	16-May inch	May-32 inch
Torque	4 in-lbs 0.45 Nm	

**Environmental Specifications**

Operating Range Temperature	-65 to +165 deg C
-----------------------------	-------------------

**Compliance Certifications** (see [product page](#) for current document)

**Plotted and Other Data**

Notes:

SMA Male to SSMC Plug Cable  
RG-316 Coax in 36 Inch with LF Solder



**FMC0234315LF-36**

Typical Performance Data

How to Order



Example: FMC0234315LF-12 = 12 inches long cable  
FMC0234315LF-100cm = 100 cm long cable

SMA Male to SSMC Plug Cable RG-316 Coax in 36 Inch with LF Solder from Fairview Microwave is in-stock and available to ship same-day. All of our RF/microwave products are available off-the-shelf from our ISO 9001:2008 certified facilities in Lewisville, Texas. Fairview Microwave is RF on-demand.

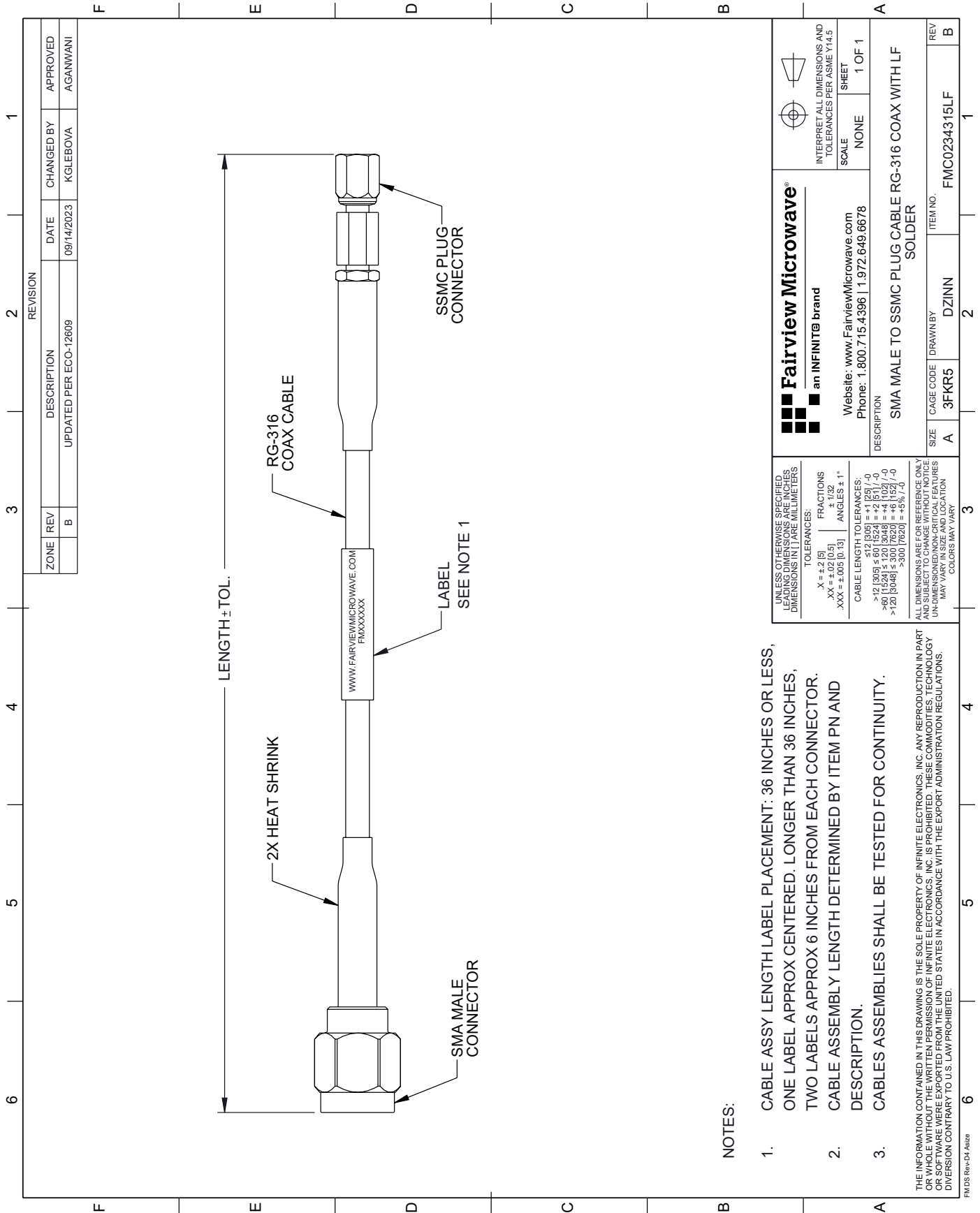
For additional information on this product, please click the following link: [SMA Male to SSMC Plug Cable RG-316 Coax in 36 Inch with LF Solder FMC0234315LF-36](#)

URL: <https://www.fairviewmicrowave.com/sma-male-ssmc-plug-cable-rg316-coax-fmc0234315lf-36-p.aspx>

The information contained within this document is accurate to the best of our knowledge and representative of the part described herein. It may be necessary to make modifications to the part and/or the documentation of the part in order to implement improvements. Fairview Microwave reserves the right to make such changes as required. Unless otherwise stated, all specifications are nominal. Fairview Microwave does not make any representation or warranty regarding the suitability of the part described herein for any particular purpose, and Fairview Microwave does not assume liability arising out of the use of any part or document.

# FMC0234315LF-36 CAD Drawing

SMA Male to SSMC Plug Cable RG-316 Coax in 36 Inch with LF Solder



 an INFINIT <sup>®</sup> brand		Website: <a href="http://www.FairviewMicrowave.com">www.FairviewMicrowave.com</a> Phone: 1.800.715.4396   1.972.649.6678	
INTERPRET ALL DIMENSIONS AND TOLERANCES PER ASME Y14.5		SCALE	NONE
SHEET		1 OF 1	
DESCRIPTION SMA MALE TO SSMC PLUG CABLE RG-316 COAX WITH LF SOLDER			
REV	DESCRIPTION	DATE	APPROVED
B	UPDATED PER ECO-12609	09/14/2023	AGANWANI
REV	DESCRIPTION	DATE	APPROVED
B	UPDATED PER ECO-12609	09/14/2023	AGANWANI

UNLESS OTHERWISE SPECIFIED LEADING DIMENSIONS ARE INCHES DIMENSIONS IN PAREMILLIMETERS	
TOLERANCES:	FRACTIONS
.X = ±.2 [5]	± 1/32
.XX = ±.02 [0.5]	± 1/32
.XXX = ±.005 [0.13]	ANGLES ± 1°
CABLE LENGTH TOLERANCES:	
>12 [305] ≤ 60 [1524] = +.1 [25] / -0	
>60 [1524] ≤ 120 [3048] = +.4 [102] / -0	
>120 [3048] ≤ 300 [7620] = +.5% / -0	
>300 [7620] = +.5% / -0	
ALL DIMENSIONS ARE FOR REFERENCE ONLY UNLESS OTHERWISE SPECIFIED. DIMENSIONS ON CRITICAL FEATURES MAY VARY IN SIZE AND LOCATION. COLORS MAY VARY.	

**NOTES:**

1. CABLE ASSY LENGTH LABEL PLACEMENT: 36 INCHES OR LESS, ONE LABEL APPROX CENTERED. LONGER THAN 36 INCHES, TWO LABELS APPROX 6 INCHES FROM EACH CONNECTOR.
2. CABLE ASSEMBLY LENGTH DETERMINED BY ITEM PN AND DESCRIPTION.
3. CABLES ASSEMBLIES SHALL BE TESTED FOR CONTINUITY.

THE INFORMATION CONTAINED IN THIS DRAWING IS THE SOLE PROPERTY OF INFINITE ELECTRONICS, INC. ANY REPRODUCTION IN PART OR WHOLE WITHOUT THE WRITTEN PERMISSION OF INFINITE ELECTRONICS, INC. IS PROHIBITED. THESE COMMODITIES, TECHNOLOGY OR SOFTWARE WERE EXPORTED FROM THE UNITED STATES IN ACCORDANCE WITH THE EXPORT ADMINISTRATION REGULATIONS. DIVERSION CONTRARY TO U.S. LAW PROHIBITED.

FW DS Rev-04 A828