

## SMA Male to SSMC Plug Cable RG-316 Coax in 6 Inch

**FMC0234315-6**

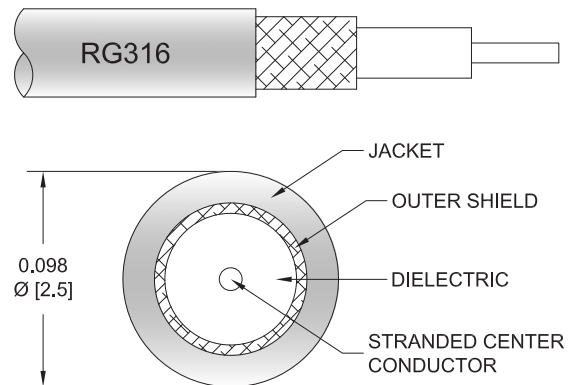


### Configuration

- Connector 1: SMA Male
- Connector 2: SSMC Plug
- Cable Type: RG316
- Coax Flex Type: Flexible

### Features

- Max Frequency 3 GHz
- 70% Phase Velocity
- FEP Jacket
- Reliable threaded SSMC cable connection
- Max. Operating Frequency of 3 GHz
- Small form factor (SSMC connection is 50% smaller than SMA)
- In stock and ready to ship



### Applications

- General Purpose
- Laboratory Use
- Software Defined Radio (SDR)
- Data acquisition systems with SSMC connections
- Digital Wideband Receivers
- SSMC patch panels
- A/D Conversion

### Description

The SMA male to SSMC plug 6 inch cable using RG-316 coax, part number FMC0234315-6, from Fairview Microwave is in-stock and ships same day. This Fairview SMA to SSMC cable assembly has a male to plug gender configuration with 50 ohm flexible RG316 coax. Fairview Microwave's flexible RF cable assemblies are ideal for applications where tight bends and continual flexure are required. The FMC0234315-6 SMA male to SSMC plug cable assembly operates to 3 GHz. Fairview Microwave's SSMC cable assemblies are part of our full line of RF interconnects available for same-day shipping. These SSMC cable assemblies are designed for test applications or connection of your SSMC system components. With a high frequency range up to 12.4 GHz, this family of SSMC cables can also be used to connect your data acquisition system or SSMC connections on your A/D converters. There are hundreds of possible cable assembly configurations to choose from, all available same day.

This SSMC cable assembly datasheet PDF contains specifications, CAD drawing and dimensions that are shown below. Fairview Microwave not only has many SSMC cable assembly options, but also a wide selection of RF, microwave and millimeter wave cable assemblies which allows RF designers to customize their configurations to whatever is required. Whether the need is to provide low loss SSMC I/O for digital receivers or simply create a custom cable assembly configuration, Fairview Microwave has the right cable assemblies for the job. Fairview can also expertly build your custom RF cable assemblies for you and ship same day.

Custom versions of most RF cable assemblies can be built and shipped same day. Custom cable assembly lengths can be obtained by specifying the desired length on the web site at time of order or by contacting a sales representative. Other RF cable assembly value added services including connector orientation or clocking, heat shrink booting and labeling are also available. RF testing can also be performed to document the electrical performance of your cable assembly.

### Electrical Specifications

Description	Minimum	Typical	Maximum	Units
Frequency Range	DC		3	GHz
VSWR			1.35:1	

## SMA Male to SSMC Plug Cable RG-316 Coax in 6 Inch

**FMC0234315-6**



### Electrical Specifications

Description	Minimum	Typical	Maximum	Units
Velocity of Propagation		70		%
Capacitance		32 [104.99]		pF/ft [pF/m]

### Mechanical Specifications

#### Cable Assembly

Length	6 in [152.4 mm]
Width/Diameter	4 in [101.6 mm]
Weight	0.046 lbs [20.87 g]

#### Cable

Cable Type	RG316
Impedance	50 Ohms
Inner Conductor Type	Solid
Inner Conductor Material and Plating	Copper, Silver
Dielectric Type	PTFE
Number of Shields	1
Shield Layer 1	Silver Plated Copper Braid
Jacket Material	FEP, Tan
Jacket Diameter	0.098 in [2.49 mm]

### Connectors

Description	Connector 1	Connector 2
Type	SMA Male	SSMC Plug
Impedance	50 Ohms	50 Ohms
Configuration	Straight	Straight
Mating Cycles		500
Contact Material and Plating	Brass, Gold	Beryllium Copper, Gold
Contact Plating Specification	50µ in. minimum	MIL-G-45204
Dielectric Type	PTFE	PTFE
Body Material and Plating	Brass, Nickel	Beryllium Copper, Gold
Body Plating Specification	100µ in. minimum	
Coupling Nut Material and Plating		Brass, Gold
Hex Size	16-May inch	May-32 inch
Torque	4 in-lbs 0.45 Nm	

### Environmental Specifications

Operating Range Temperature	-65 to +165 deg C
-----------------------------	-------------------

## SMA Male to SSMC Plug Cable RG-316 Coax in 6 Inch

### FMC0234315-6



**Compliance Certifications** (see [product page](#) for current document)

#### Plotted and Other Data

Notes:

#### Typical Performance Data

#### How to Order

Part Number Configuration:

**FMC0234315**

- **xx**

**uu**

Unit of Measure:  
cm = Centimeters  
<blank> = Inches  
Length  
Base Number

Example: FMC0234315-12 = 12 inches long cable  
FMC0234315-100cm = 100 cm long cable

SMA Male to SSMC Plug Cable RG-316 Coax in 6 Inch from Fairview Microwave is in-stock and available to ship same-day. All of our RF/microwave products are available off-the-shelf from our ISO 9001:2008 certified facilities in Lewisville, Texas. Fairview Microwave is RF on-demand.

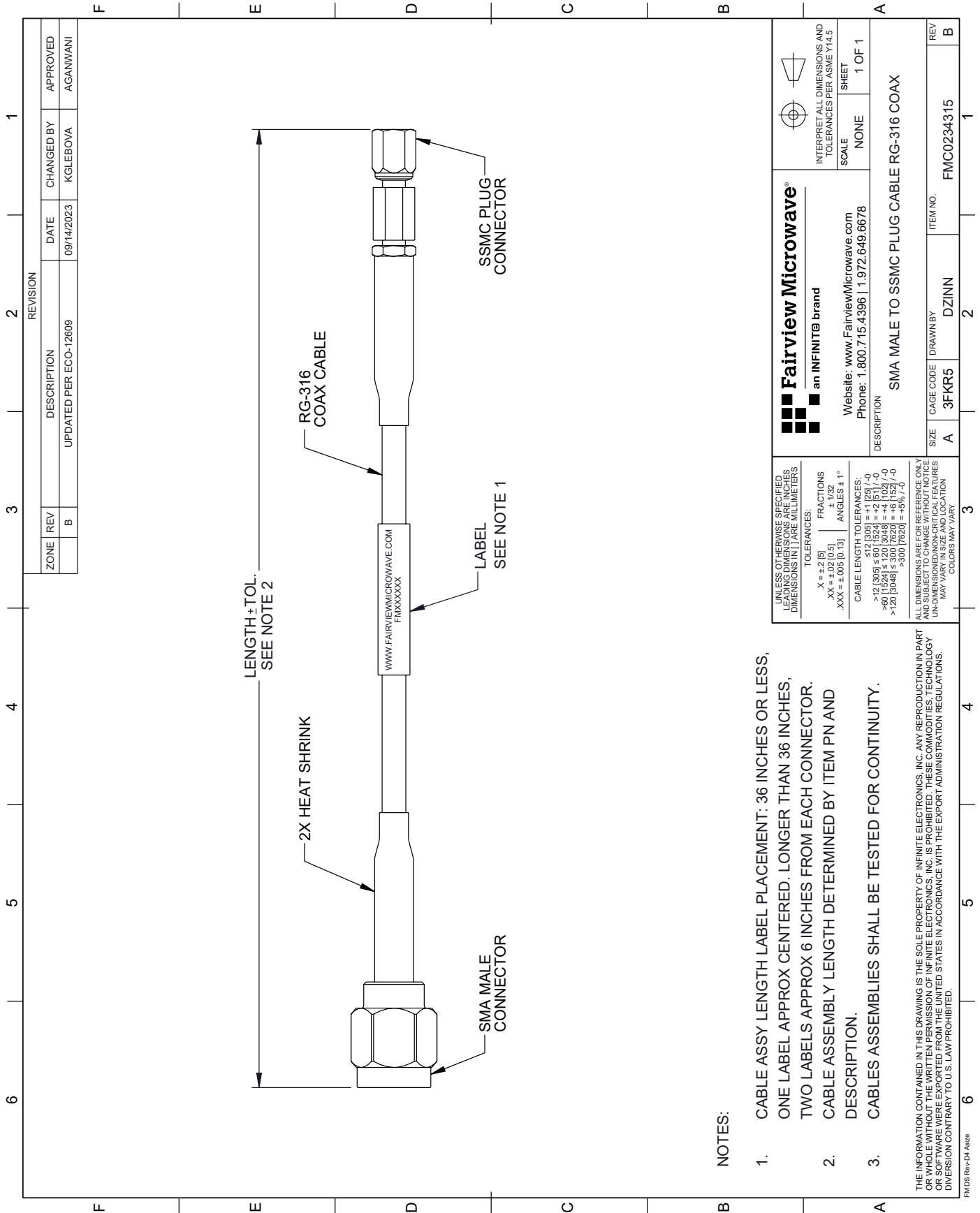
For additional information on this product, please click the following link: [SMA Male to SSMC Plug Cable RG-316 Coax in 6 Inch FMC0234315-6](#)

URL: <https://www.fairviewmicrowave.com/sma-male-ssmc-plug-cable-rg316-coax-fmc0234315-6-p.aspx>

The information contained within this document is accurate to the best of our knowledge and representative of the part described herein. It may be necessary to make modifications to the part and/or the documentation of the part in order to implement improvements. Fairview Microwave reserves the right to make such changes as required. Unless otherwise stated, all specifications are nominal. Fairview Microwave does not make any representation or warranty regarding the suitability of the part described herein for any particular purpose, and Fairview Microwave does not assume liability arising out of the use of any part or document.

# FMC0234315-6 CAD Drawing

## SMA Male to SSMC Plug Cable RG-316 Coax in 6 Inch



**NOTES:**

1. CABLE ASSY LENGTH LABEL PLACEMENT: 36 INCHES OR LESS, ONE LABEL APPROX CENTERED. LONGER THAN 36 INCHES, TWO LABELS APPROX 6 INCHES FROM EACH CONNECTOR.
2. CABLE ASSEMBLY LENGTH DETERMINED BY ITEM PN AND DESCRIPTION.
3. CABLES ASSEMBLIES SHALL BE TESTED FOR CONTINUITY.

THE INFORMATION CONTAINED IN THIS DRAWING IS THE SOLE PROPERTY OF INFINITE ELECTRONICS, INC. ANY REPRODUCTION IN PART OR WHOLE WITHOUT THE WRITTEN PERMISSION OF INFINITE ELECTRONICS, INC. IS PROHIBITED. THESE COMMODITIES, TECHNOLOGY OR SOFTWARE WERE EXPORTED FROM THE UNITED STATES IN ACCORDANCE WITH THE EXPORT ADMINISTRATION REGULATIONS. DIVERSION CONTRARY TO U.S. LAW PROHIBITED.

FIM DS Rev-D4 A182P

<p>UNLESS OTHERWISE SPECIFIED LEADING DIMENSIONS ARE INCHES DIMENSIONS IN PARE MILLIMETERS</p> <p>TOLERANCES:          .X = ±.2 [5]    FRACTIONS ± 1/32          .XX = ±.02 [0.5]    ANGLES ± 1°          .XXX = ±.005 [0.13]</p> <p>CABLE LENGTH TOLERANCES:          &gt;12 [305] ≤ 60 [1524] = +1 [25] / -0          &gt;60 [1524] ≤ 120 [3048] = +4 [102] / -0          &gt;120 [3048] ≤ 300 [7620] = +5 [127] / -0          &gt;300 [7620] = +5 [127] / -0</p> <p>ALL DIMENSIONS ARE FOR REFERENCE ONLY DIMENSIONS ON CRITICAL FEATURES MAY VARY IN SIZE AND LOCATION COLORS MAY VARY</p>		<p><b>Fairview Microwave®</b>          an INFINIT® brand</p> <p>Website: <a href="http://www.FairviewMicrowave.com">www.FairviewMicrowave.com</a>          Phone: 1.800.715.4396   1.972.649.6678</p>		<p>INTERPRET ALL DIMENSIONS AND TOLERANCES PER ASME Y14.5</p> <p>SCALE NONE</p> <p>SHEET 1 OF 1</p>											
<p>REVISION</p> <table border="1"> <tr> <th>ZONE</th> <th>REV</th> <th>DESCRIPTION</th> <th>DATE</th> <th>CHANGED BY</th> <th>APPROVED</th> </tr> <tr> <td></td> <td>B</td> <td>UPDATED PER ECO-12609</td> <td>09/14/2023</td> <td>KGLEBOVA</td> <td>AGANWANI</td> </tr> </table>		ZONE	REV	DESCRIPTION	DATE	CHANGED BY	APPROVED		B	UPDATED PER ECO-12609	09/14/2023	KGLEBOVA	AGANWANI	<p>DESCRIPTION          SMA MALE TO SSMC PLUG CABLE RG-316 COAX</p>	
ZONE	REV	DESCRIPTION	DATE	CHANGED BY	APPROVED										
	B	UPDATED PER ECO-12609	09/14/2023	KGLEBOVA	AGANWANI										
<p>SIZE A</p>		<p>CAGE CODE 3FKR5</p>													
<p>DRAWN BY DZINN</p>		<p>ITEM NO. FMC0234315</p>													
<p>REV B</p>		<p>1</p>													