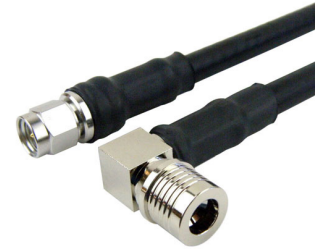


SMA Male to RA QMA Male Cable LMR-240 Coax in 120 Inch with Times Microwave Connectors



FMC0223240-120

Configuration

- Connector 1: SMA Male
- Connector 2: QMA Male Right Angle
- Cable Type: LMR-240
- Coax Flex Type: Flexible

Features

- Max Frequency 6 GHz
- Shielding Effectivity > 90 dB
- 84% Phase Velocity
- PE Jacket



Applications

- General Purpose
- Laboratory Use

Description

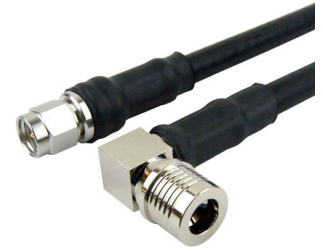
The SMA male to RA QMA male 120 inch cable using LMR-240 coax, part number FMC0223240-120, from Fairview Microwave is in-stock and ships same day. This Fairview SMA to QMA cable assembly has a male to male gender configuration with 50 ohm flexible LMR-240 coax. Fairview Microwave's flexible RF cable assemblies are ideal for applications where tight bends and continual flexure are required. The FMC0223240-120 SMA male to QMA male cable assembly operates to 6 GHz. The right angle QMA interface on the LMR-240 cable allows for easier connections in tight spaces.

Custom versions of most RF cable assemblies can be built and shipped same day. Custom cable assembly lengths can be obtained by specifying the desired length on the web site at time of order or by contacting a sales representative. Other RF cable assembly value added services including connector orientation or clocking, heat shrink booting and labeling are also available. RF testing can also be performed to document the electrical performance of your cable assembly.

Electrical Specifications

Description	Minimum	Typical	Maximum	Units
Frequency Range	DC		6	GHz
VSWR			1.35:1	
Velocity of Propagation		84		%
RF Shielding	90			dB
Capacitance		24.2 [79.4]		pF/ft [pF/m]
Inductance		0.06 [0.2]		uH/ft [uH/m]
DC Resistance Inner Conductor		3.2 [10.5]		Ohms/1000ft [Ohms/Km]

SMA Male to RA QMA Male Cable LMR-240 Coax in 120 Inch with Times Microwave Connectors



FMC0223240-120

Electrical Specifications

Description	Minimum	Typical	Maximum	Units
DC Resistance Outer Conductor		3.89 [12.76]		Ohms/1000ft [Ohms/Km]

Mechanical Specifications

Cable Assembly

Width/Diameter	0.75 in [19.05 mm]
Weight	0.38101 lbs [172.82 g]

Cable

Cable Type	LMR-240
Impedance	50 Ohms
Inner Conductor Type	Solid
Inner Conductor Material and Plating	Copper
Dielectric Type	PE (F)
Number of Shields	1
Shield Layer 1	Tinned Copper
Shield Layer 2	Aluminum Tape
Jacket Material	PE, Black
Jacket Diameter	0.24 in [6.1 mm]

Connectors

Description	Connector 1	Connector 2
Type	SMA Male	QMA Male Right Angle
Impedance	50 Ohms	50 Ohms
Configuration	Straight	Right Angle
Contact Material and Plating	Beryllium Copper, Gold	Phosphor Bronze, Gold
Dielectric Type	PTFE	PTFE
Outer Conductor Material and Plating		Brass, Nickel
Body Material and Plating	Brass, Tri-Metal	Brass, Nickel
Coupling Nut Material and Plating	Brass, Tri-Metal	
Hex Size	5/16 inch	

Environmental Specifications

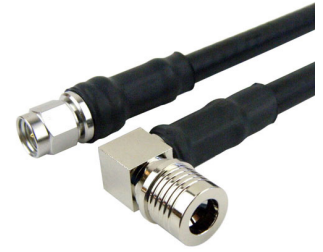
Operating Range Temperature	-40 to +85 deg C
-----------------------------	------------------

Compliance Certifications (see [product page](#) for current document)

Plotted and Other Data

Notes:

SMA Male to RA QMA Male Cable LMR-240 Coax in 120 Inch with Times Microwave Connectors



FMC0223240-120

Typical Performance Data

How to Order



Example: FMC0223240-12 = 12 inches long cable
FMC0223240-100cm = 100 cm long cable

SMA Male to RA QMA Male Cable LMR-240 Coax in 120 Inch with Times Microwave Connectors from Fairview Microwave is in-stock and available to ship same-day. All of our RF/microwave products are available off-the-shelf from our ISO 9001:2008 certified facilities in Lewisville, Texas. Fairview Microwave is RF on-demand.

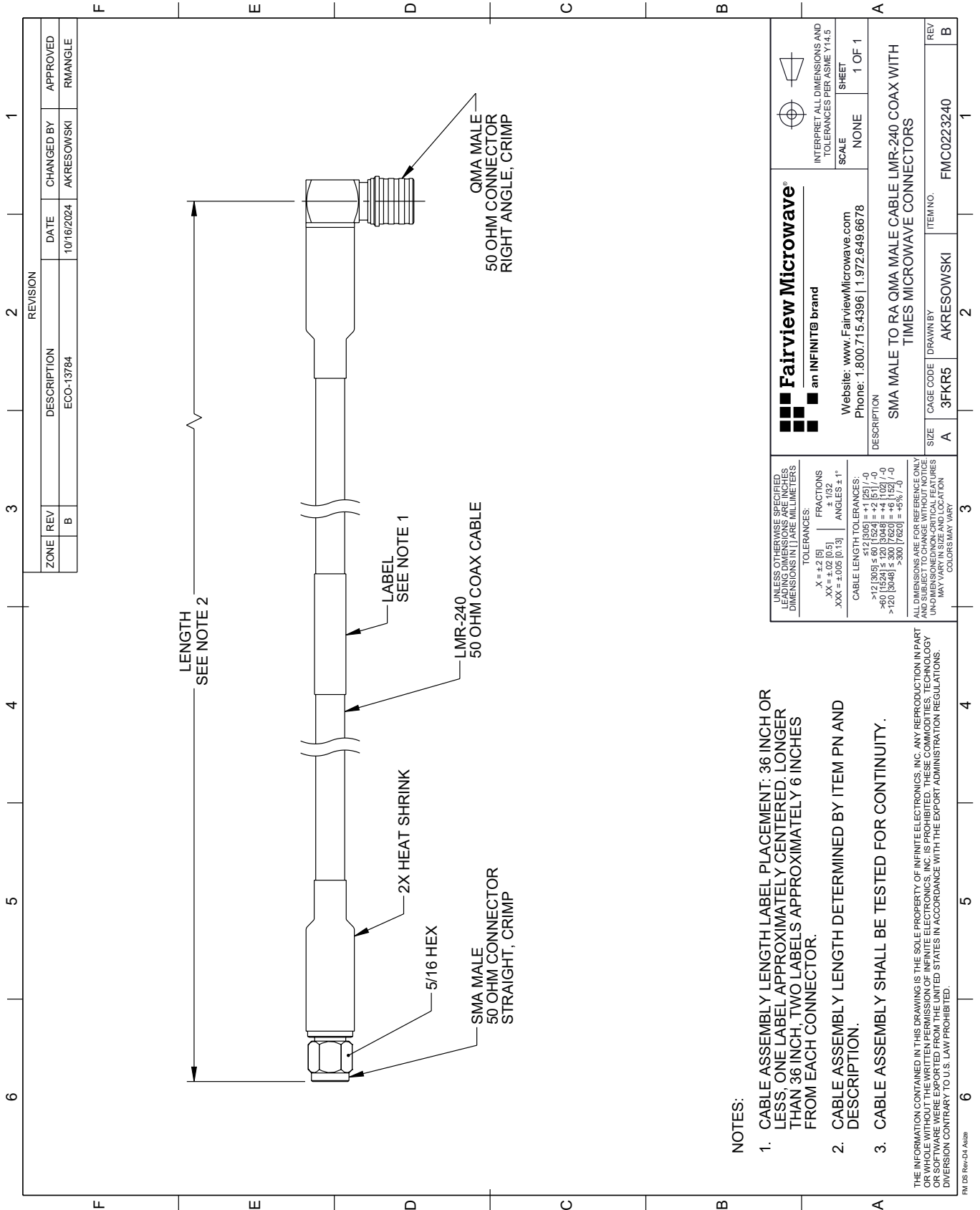
For additional information on this product, please click the following link: [SMA Male to RA QMA Male Cable LMR-240 Coax in 120 Inch with Times Microwave Connectors FMC0223240-120](https://www.fairviewmicrowave.com/sma-male-ra-qma-plug-cable-times-lmr-240-coax-fmc0223240-120-p.aspx)

URL: <https://www.fairviewmicrowave.com/sma-male-ra-qma-plug-cable-times-lmr-240-coax-fmc0223240-120-p.aspx>

The information contained within this document is accurate to the best of our knowledge and representative of the part described herein. It may be necessary to make modifications to the part and/or the documentation of the part in order to implement improvements. Fairview Microwave reserves the right to make such changes as required. Unless otherwise stated, all specifications are nominal. Fairview Microwave does not make any representation or warranty regarding the suitability of the part described herein for any particular purpose, and Fairview Microwave does not assume liability arising out of the use of any part or document.

FMC0223240-120 CAD Drawing

SMA Male to RA QMA Male Cable LMR-240 Coax in 120 Inch with Times Microwave Connectors



NOTES:

1. CABLE ASSEMBLY LENGTH LABEL PLACEMENT: 36 INCH OR LESS, ONE LABEL APPROXIMATELY CENTERED, LONGER THAN 36 INCH, TWO LABELS APPROXIMATELY 6 INCHES FROM EACH CONNECTOR.
2. CABLE ASSEMBLY LENGTH DETERMINED BY ITEM PN AND DESCRIPTION.
3. CABLE ASSEMBLY SHALL BE TESTED FOR CONTINUITY.

THE INFORMATION CONTAINED IN THIS DRAWING IS THE SOLE PROPERTY OF INFINITE ELECTRONICS, INC. ANY REPRODUCTION IN PART OR WHOLE WITHOUT THE WRITTEN PERMISSION OF INFINITE ELECTRONICS, INC. IS PROHIBITED. THESE COMMODITIES, TECHNOLOGY OR SOFTWARE WERE EXPORTED FROM THE UNITED STATES IN ACCORDANCE WITH THE EXPORT ADMINISTRATION REGULATIONS. DIVERSION CONTRARY TO U.S. LAW PROHIBITED.

FM DS Rev-D4 Alt2b

REVISION		DATE	CHANGED BY	APPROVED
ZONE	REV			
	B	10/16/2024	AKRESOWSKI	RMANGLE
DESCRIPTION				
ECO-13784				

<p>Fairview Microwave® an INFINIT® brand</p> <p>Website: www.FairviewMicrowave.com Phone: 1.800.715.4396 1.972.649.6678</p>		<p>INTERPRET ALL DIMENSIONS AND TOLERANCES PER ASME Y14.5</p> <p>SCALE: NONE</p> <p>SHEET: 1 OF 1</p>
<p>DESCRIPTION: SMA MALE TO RA QMA MALE CABLE LMR-240 COAX WITH TIMES MICROWAVE CONNECTORS</p>		
SIZE	CAGE CODE	ITEM NO.
A	3FKR5	FMC0223240
SIZE	DRAWN BY	REV
A	AKRESOWSKI	B

UNLESS OTHERWISE SPECIFIED, LEADING DIMENSIONS ARE IN INCHES. DIMENSIONS IN [] ARE MILLIMETERS.

TOLERANCES:
 .X = ±.2 [5]
 .XX = ±.02 [0.5]
 .XXX = ±.005 [0.13]

FRACTIONS
 ± 1/32
 ANGLES ± 1°

CABLE LENGTH TOLERANCES:
 >12 [305] ≤ 60 [1524] = ±.125 [-0
 >60 [1524] ≤ 120 [3048] = ±.1 [2.5] [-0
 >120 [3048] ≤ 300 [7620] = ±.06 [1.5] [-0
 >300 [7620] = ±.03 [0.75]

ALL DIMENSIONS ARE FOR REFERENCE ONLY. UNDIMENSIONED NON-CRITICAL FEATURES MAY VARY IN SIZE AND LOCATION. COLORS MAY VARY.