

## Low Loss SMA Male to RA SMA Male Cable LMR-240 Coax with Times Microwave Components with LF Solder

The SMA male to RA SMA male cable using LMR-240 coax, part number FMC00472/0001, from Fairview Microwave is in-stock and ships same day. This Fairview SMA to SMA cable assembly has a male to male gender configuration with 50 ohm flexible LMR-240 coax. Fairview Microwave's flexible RF cable assemblies are ideal for applications where tight bends and continual flexure are required. The FMC00472/0001 SMA male to SMA male cable assembly operates to 5.8 GHz. The right angle SMA interface on the LMR-240 cable allows for easier connections in tight spaces. The double shielding of this Fairview cable assembly provides excellent shielding effectiveness of better than 90 dB.

Custom versions of most RF cable assemblies can be built and shipped same day. Custom cable assembly lengths can be obtained by specifying the desired length on the web site at time of order or by contacting a sales representative. Other RF cable assembly value added services including connector orientation or clocking, heat shrink booting and labeling are also available. RF testing can also be performed to document the electrical performance of your cable assembly.

### Electrical Specifications

Description	Min	Typ	Max	Units
Frequency Range	DC		5.8	GHz
VSWR			1.4:1	
Velocity of Propagation		84		%
RF Shielding	90			dB
Group Delay		1.21 [3.97]		ns/ft [ns/m]
Capacitance		24.2 [79.4]		pF/ft [pF/m]
Inductance		0.06 [0.2]		uH/ft [uH/m]
DC Resistance Inner Conductor		3.2 [10.5]		$\Omega/1000\text{ft}$ [ $\Omega/\text{Km}$ ]
DC Resistance Outer Conductor		3.89 [12.76]		$\Omega/1000\text{ft}$ [ $\Omega/\text{Km}$ ]
Jacket Spark			5,000	Vrms

### Performance by Frequency

Description	F1	F2	F3	F4	F5	Units
Frequency	0.25	0.5	1	2.5	5.8	GHz
Insertion Loss (Typ.)	0.039	0.055	0.079	0.129	0.204	dB/ft
	0.13	0.18	0.26	0.42	0.67	dB/m

#### Electrical Specification Notes:

Insertion Loss does not include the loss of the connectors. Insertion Loss is estimated as 0.1 dB for the straight connector and 0.2 dB for the right angle connector.

### Mechanical Specifications

#### Cable Assembly

Weight 0.072 lbs [32.66 g]

#### Cable

Cable Type LMR-240  
 Impedance 50 Ohms



### Configuration:

- SMA Male
- SMA Male Right Angle
- LMR-240

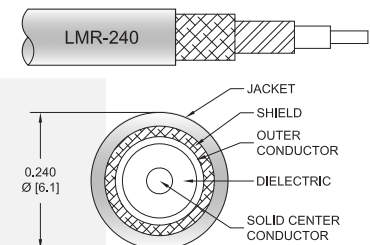
### Features:

- Max Frequency 5.8 GHz
- Shielding Effectivity > 90 dB
- 84% Phase Velocity
- Double Shielded
- PE Jacket

### Applications:

- General Purpose
- Laboratory Use

### Cable Diagram:



Fairview Microwave  
 301 Leora Ln., Suite 100  
 Lewisville, TX 75056  
 Tel: 1-800-715-4396 / (972) 649-6678  
 Fax: (972) 649-6689  
[www.fairviewmicrowave.com](http://www.fairviewmicrowave.com)  
[sales@fairviewmicrowave.com](mailto:sales@fairviewmicrowave.com)

Inner Conductor Type	Solid
Inner Conductor Material and Plating	Copper
Dielectric Type	PE (F)
Number of Shields	2
Shield Layer 1	Aluminum Tape
Shield Layer 2	Tinned Copper Braid
Jacket Material	PE, Black
Jacket Diameter	0.24 in [6.1 mm]
One Time Minimum Bend Radius	0.75 in [19.05 mm]
Repeated Minimum Bend Radius	2.5 in [63.5 mm]
Bending Moment	0.25 lbs-ft [0.34 N-m]
Flat Plate Crush	20 lbs/in [0.36 Kg/mm]
Tensile Strength	80 lbs [36.29 Kg]

**Connectors**

Description	Connector 1	Connector 2
Type	SMA Male	SMA Male
Specification	MIL-STD-348	MIL-STD-348
Impedance	50 Ohms	50 Ohms
Mating Cycles		500
Contact Material & Plating	Beryllium Copper, Gold	Brass/Phosphor Bronze, Gold
Contact Plating Spec.	ASTM B488	50 µinch
Dielectric Type	PTFE	Teflon
Outer Cond Material & Plating	Passivated Stainless Steel, Gold	
Body Material & Plating	Passivated Stainless Steel, Gold	Brass, Tri-Metal
Body Plating Spec.	SAE-AMS-2700	80 µinch
Coupling Nut Material & Plating	Passivated Stainless Steel	Brass, Tri-Metal
Coupling Nut Plating Spec.	SAE-AMS-2700	80 µinch
Hex Size		5/16 inch
Torque		7 in-lbs 0.79 Nm

**Compliance Certifications** (see [product page](#) for current document)

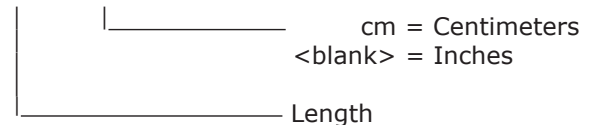
**Plotted and Other Data**

Notes:

**How to Order**

Part Number Configuration:

**FMC00472/0001 - xx uu**



Example: FMC00472/0001-12 = 12 inches long cable  
FMC00472/0001-100cm = 100 cm long cable

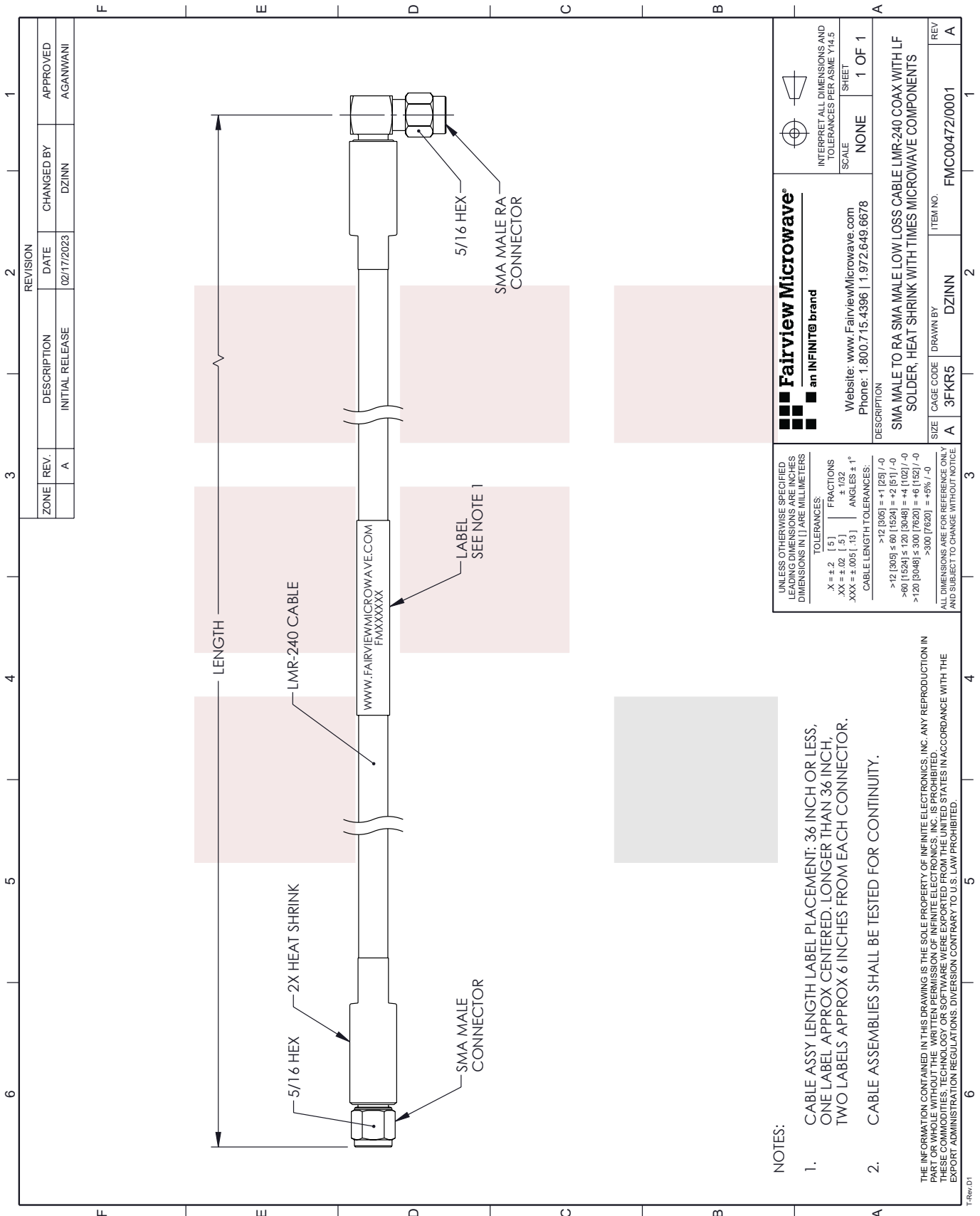
Low Loss SMA Male to RA SMA Male Cable LMR-240 Coax with Times Microwave Components with LF Solder from Fairview Microwave has same day shipment for domestic and International orders. Our RF, microwave and millimeter wave products maintain a 99% availability and are part of the broadest selection in the industry.

Click the following link to obtain additional part information: [Low Loss SMA Male to RA SMA Male Cable LMR-240 Coax with Times Microwave Components with LF Solder FMC00472/0001](#)

URL: <https://www.fairviewmicrowave.com/low-loss-sma-male-to-ra-sma-male-cable-lmr-240-coax-with-times-microwave-components-with-lf-solder-fmc00472-0001-p.aspx>

The information contained in this document is accurate to the best of our knowledge and representative of the part described herein. It may be necessary to make modifications to the part and/or the documentation of the part, in order to implement improvements. Fairview Microwave reserves the right to make such changes as required. Unless otherwise stated, all specifications are nominal. Fairview Microwave does not make any representation or warranty regarding the suitability of the part described herein for any particular purpose, and Fairview Microwave does not assume any liability arising out of the use of any part or documentation.





**NOTES:**

1. CABLE ASSY LENGTH LABEL PLACEMENT: 36 INCH OR LESS, ONE LABEL APPROX CENTERED. LONGER THAN 36 INCH, TWO LABELS APPROX 6 INCHES FROM EACH CONNECTOR.
2. CABLE ASSEMBLIES SHALL BE TESTED FOR CONTINUITY.

THE INFORMATION CONTAINED IN THIS DRAWING IS THE SOLE PROPERTY OF INFINITE ELECTRONICS, INC. ANY REPRODUCTION IN PART OR WHOLE WITHOUT THE WRITTEN PERMISSION OF INFINITE ELECTRONICS, INC. IS PROHIBITED. THESE COMMODITIES, TECHNOLOGY OR SOFTWARE WERE EXPORTED FROM THE UNITED STATES IN ACCORDANCE WITH THE EXPORT ADMINISTRATION REGULATIONS. DIVERSION CONTRARY TO U.S. LAW PROHIBITED.

<p>UNLESS OTHERWISE SPECIFIED LEADING DIMENSIONS ARE INCHES DIMENSIONS IN [ ] ARE MILLIMETERS</p> <p>TOLERANCES:                  .X = ±.2 [ .5 ] FRACTIONS                  .XX = ±.02 [ .5 ] ±.132                  .XXX = ±.005 [ .13 ] ANGLES ± 1°</p> <p>CABLE LENGTH TOLERANCES:                  &gt;12 (305) = +1 (25) / -0                  &gt;12 (305) ≤ 60 (1524) = +2 (51) / -0                  &gt;60 (1524) ≤ 120 (3048) = +4 (102) / -0                  &gt;120 (3048) ≤ 300 (7620) = +6 (152) / -0                  &gt;300 (7620) = +5% / -0</p> <p>ALL DIMENSIONS ARE FOR REFERENCE ONLY AND SUBJECT TO CHANGE WITHOUT NOTICE</p>	
<p>Fairview Microwave<sup>®</sup> an INFINIT<sup>®</sup> brand</p> <p>Website: <a href="http://www.FairviewMicrowave.com">www.FairviewMicrowave.com</a> Phone: 1.800.715.4396   1.972.649.6678</p>	<p>INTERPRET ALL DIMENSIONS AND TOLERANCES PER ASME Y14.5 SHEET</p> <p>SCALE NONE</p> <p>SHEET 1 OF 1</p>
<p>DESCRIPTION SMA MALE TO RA SMA MALE LOW LOSS CABLE LMR-240 COAX WITH LF SOLDER, HEAT SHRINK WITH TIMES MICROWAVE COMPONENTS</p>	<p>ITEM NO. FMC00472/0001</p>
<p>SIZE A CAGE CODE 3FKR5 DRAWN BY DZINN</p>	<p>REV A</p>

REVISION		CHANGED BY	APPROVED
ZONE	REV.	DESCRIPTION	DATE
	A	INITIAL RELEASE	02/17/2023
		DZINN	AGANWANI