

12dB RF fixed attenuator 2W, DC to 3GHz,  
SMA male to female, Stainless Steel



## FMAT7601-12

### Features

- Bidirectional
- DC to 3 GHz Range
- Attenuation 12 +/- 0.5 dB
- 2 Watts Average Input Power
- VSWR <1.15:1

### Applications

- Precision Measurements
- Production Systems
- Instrumentation
- Prototyping and Characterization

### Description

Fairview Microwave carries a broad selection of fixed attenuators with a wide range of attenuation levels, frequency ranges, and power dissipation ranges. Also known as RF pads, RF microwave attenuators lower the amplitude of a signal (attenuate) a known amount. These attenuators pads can be used in a wide variety of applications including reducing a signal level to protect measurement equipment or other circuitry, extending the range of power meters and amplifiers, and impedance matching circuits by reducing the VSWR seen by adjacent components. RF attenuators can prevent signal overload in amplifiers, receivers and detectors, adjusting the signal level to a range that is optimal.

Few RF components are as commonly used as fixed coaxial attenuators, and Fairview Microwave carries one of the largest in-stock varieties and ships them same day. The FMAT7601-12 is a 12 dB Fixed Attenuators that operates from DC to 3 GHz and is rated to 2 Watts. The versatile coaxial package uses SMA male to SMA female connectors and is also REACH and RoHS compliant.

### Electrical Specifications

Description	Minimum	Typical	Maximum	Units
Frequency Range	DC		3	GHz
Impedance		50		Ohms
Nominal Attenuation		12		dB
VSWR			1.15:1	
Input Power, CW			2	Watts
Input Power, Peak			500	Watts
5μs pulse w/ 0.4% duty cycle				

### Mechanical Specifications

#### Size

Length	0.858266 in [21.8 mm]
Width/Diameter	0.31496 in [8 mm]
Height	0.31496 in [8 mm]
Weight	0.035 lbs [15.88 g]
Body Material and Plating	Stainless Steel

#### Configuration

Design	Fixed, Bidirectional
--------	----------------------

12dB RF fixed attenuator 2W, DC to 3GHz,  
SMA male to female, Stainless Steel



## FMAT7601-12

### Connectors

Description	Connector 1	Connector 2
Type	SMA Male	SMA Female
Contact Material and Plating	Brass, Gold	Beryllium Copper, Gold
Body Material and Plating	Stainless Steel	Stainless Steel

### Environmental Specifications

#### Temperature

Operating Range -55 to +125 deg C

**Compliance Certifications** (see [product page](#) for current document)

### Plotted and Other Data

Notes:

### Typical Performance Data

12dB RF fixed attenuator 2W, DC to 3GHz, SMA male to female, Stainless Steel from Fairview Microwave is in-stock and available to ship same-day. All of our RF/microwave products are available off-the-shelf from our ISO 9001:2008 certified facilities in Lewisville, Texas. Fairview Microwave is RF on-demand.

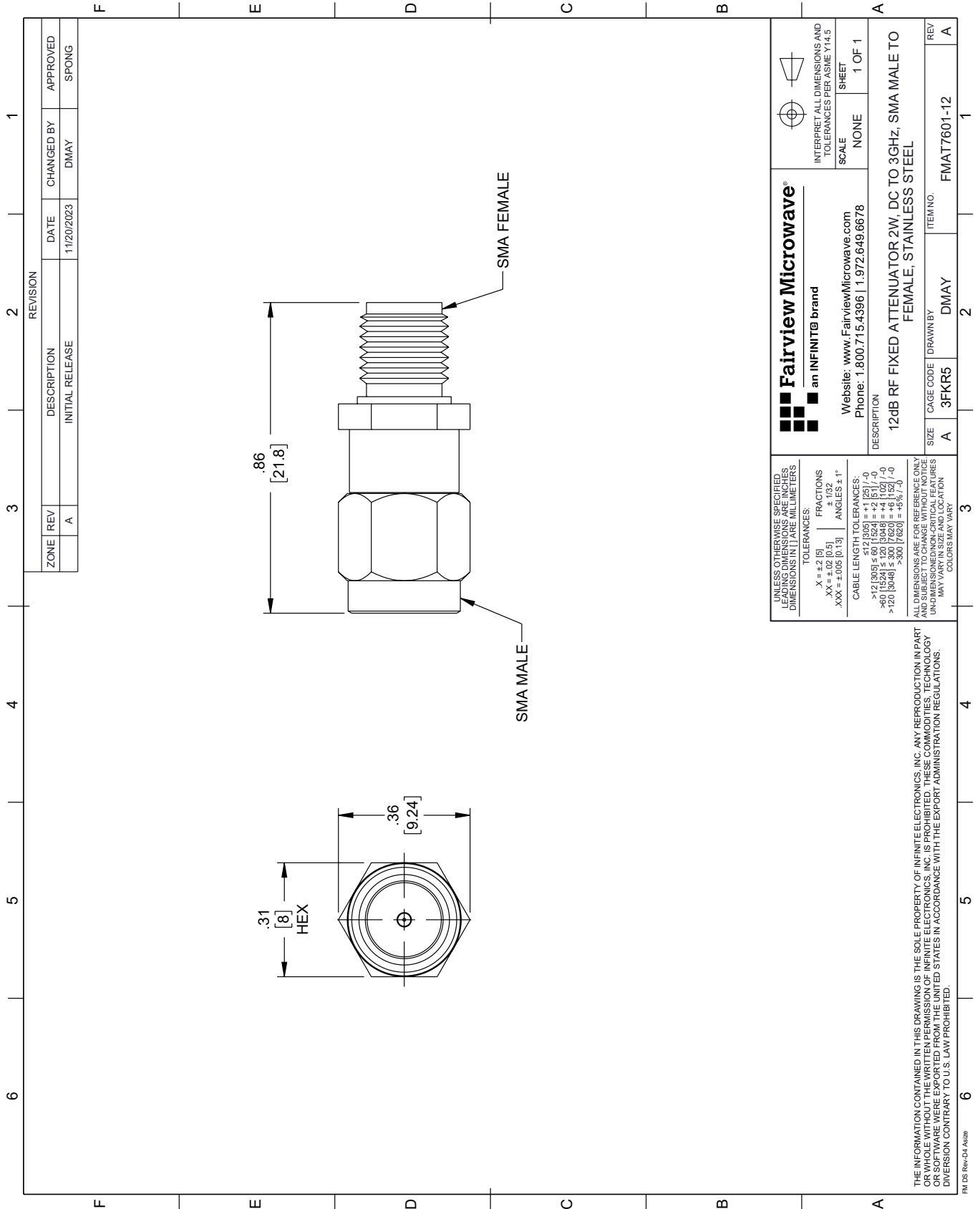
For additional information on this product, please click the following link: [12dB RF fixed attenuator 2W, DC to 3GHz, SMA male to female, Stainless Steel FMAT7601-12](#)

URL: <https://www.fairviewmicrowave.com/12db-fixed-attenuator-sma-male-sma-female-2-watts-fmat7601-12-p.aspx>

The information contained within this document is accurate to the best of our knowledge and representative of the part described herein. It may be necessary to make modifications to the part and/or the documentation of the part in order to implement improvements. Fairview Microwave reserves the right to make such changes as required. Unless otherwise stated, all specifications are nominal. Fairview Microwave does not make any representation or warranty regarding the suitability of the part described herein for any particular purpose, and Fairview Microwave does not assume liability arising out of the use of any part or document.

# FMAT7601-12 CAD Drawing

12dB RF fixed attenuator 2W, DC to 3GHz, SMA male to female, Stainless Steel



REVISION		DATE	CHANGED BY	APPROVED
ZONE	REV	DESCRIPTION	INITIAL RELEASE	
	A			SPONG

**Fairview Microwave®**  
an INFINITIB® brand

Website: [www.FairviewMicrowave.com](http://www.FairviewMicrowave.com)  
Phone: 1.800.715.4396 | 1.972.649.6678

UNLESS OTHERWISE SPECIFIED, LEADING DIMENSIONS ARE IN INCHES AND UNLEADING DIMENSIONS ARE IN MILLIMETERS.

TOLERANCES:  
 .X = ±.2 [5]      FRACTIONS ± 1/32  
 .XX = ±.02 [0.5]      ANGLES ± 1°  
 .XXX = ±.005 [0.13]

CABLE LENGTH TOLERANCES:  
 >12 [305] ≤ 60 [1524] = ±.1 [2.5] / -0  
 >60 [1524] ≤ 120 [3048] = ±.4 [10.2] / -0  
 >120 [3048] ≤ 300 [7620] = ±.8 [20.3] / -0

ALL DIMENSIONS ARE FOR REFERENCE ONLY. UNLESS OTHERWISE SPECIFIED, DIMENSIONS ARE IN INCHES AND UNLEADING DIMENSIONS ARE IN MILLIMETERS. COLORS MAY VARY.

FAIRVIEW MICROWAVE, INC. IS PROHIBITED FROM EXPORTING THIS DRAWING OR WHOLE OR PART THEREOF TO THE UNITED STATES IN ACCORDANCE WITH THE EXPORT ADMINISTRATION REGULATIONS.

DESCRIPTION	12dB RF FIXED ATTENUATOR 2W, DC TO 3GHz, SMA MALE TO FEMALE, STAINLESS STEEL
ITEM NO.	FMAT7601-12
SIZE	A
CAGE CODE	3FKR5
DRAWN BY	DMAY
SCALE	NONE
SHEET	1 OF 1

THE INFORMATION CONTAINED IN THIS DRAWING IS THE SOLE PROPERTY OF INFINITE ELECTRONICS, INC. ANY REPRODUCTION IN PART OR WHOLE WITHOUT THE WRITTEN PERMISSION OF INFINITE ELECTRONICS, INC. IS PROHIBITED. THESE COMMODITIES, TECHNOLOGY OR SOFTWARE WERE EXPORTED FROM THE UNITED STATES IN ACCORDANCE WITH THE EXPORT ADMINISTRATION REGULATIONS.

FM DS Rev-D4 Alt2b