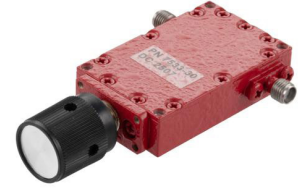


0 to 30 dB Variable Attenuator, SMA Female to SMA Female from 4 GHz to 8 GHz Rated to 5 Watts



**FMAT7533-30**

**Features**

- 30 dB Attenuation Level
- Rotary Dial Design for Continuous Adjustment
- Frequency Range 4 GHz to 8 GHz Range
- SMA Female Connectorized Design
- Max VSWR 1.5:1
- Max Power Rating: 5W (CW)

**Applications**

- Instrumentation
- Precision Measurements
- Prototyping and Characterization
- Production Systems

**Description**

Fairview Microwave FMAT7533-30 is a continuously variable attenuator that has 30 dB of total attenuation with rotary dial design for continuous attenuation level adjustment across a frequency range of 4 GHz to 8 GHz. With SMA female gender for connector 1 and a SMA female for connector 2. This microwave variable attenuator design is tried and true technology that offers exceptional RF performance characteristics that include 0.5 dB maximum insertion loss and a maximum VSWR of 1.5:1. Our continuously variable attenuator is rated to 5 Watt at the stated attenuation.

**Configuration**

Design: Continuously Variable Attenuator  
Body Material and Plating: Aluminum

**Electrical Specifications** Values at 25°C, sea level

Description	Minimum	Typical	Maximum	Units
Frequency Range	4		8	GHz
Impedance		50		Ohms
Attenuation Value		0 to 30		dB
Step Type		Dial		
Input Power (CW)			5	Watts
Peak Power			3	kWatts
Insertion Loss			0.5	dB
VSWR			1.5:1	

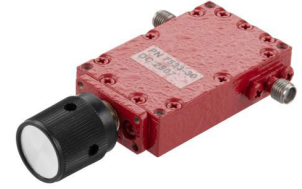
**Mechanical Specifications**

**Temperature**

**Size**

Length: 2 in [50.8 mm]  
Width: 1.25 in [31.75 mm]  
Height: 0.5 in [12.7 mm]  
Weight: 0.02 lbs [9.07 g]

0 to 30 dB Variable Attenuator, SMA Female to SMA Female from 4 GHz to 8 GHz Rated to 5 Watts



**FMAT7533-30**

**Connectors**

Description	Connector 1	Connector 2
Type	SMA Female	SMA Female

**Compliance Certifications** (see [product page](#) for current document)

**Plotted and Other Data**

Notes:

- Values at 25 °C, sea level

0 to 30 dB Variable Attenuator, SMA Female to SMA Female from 4 GHz to 8 GHz Rated to 5 Watts from Fairview Microwave is in-stock and available to ship same-day. All of our RF/microwave products are available off-the-shelf from our ISO 9001:2008 certified facilities in Lewisville, Texas. Fairview Microwave is RF on-demand.

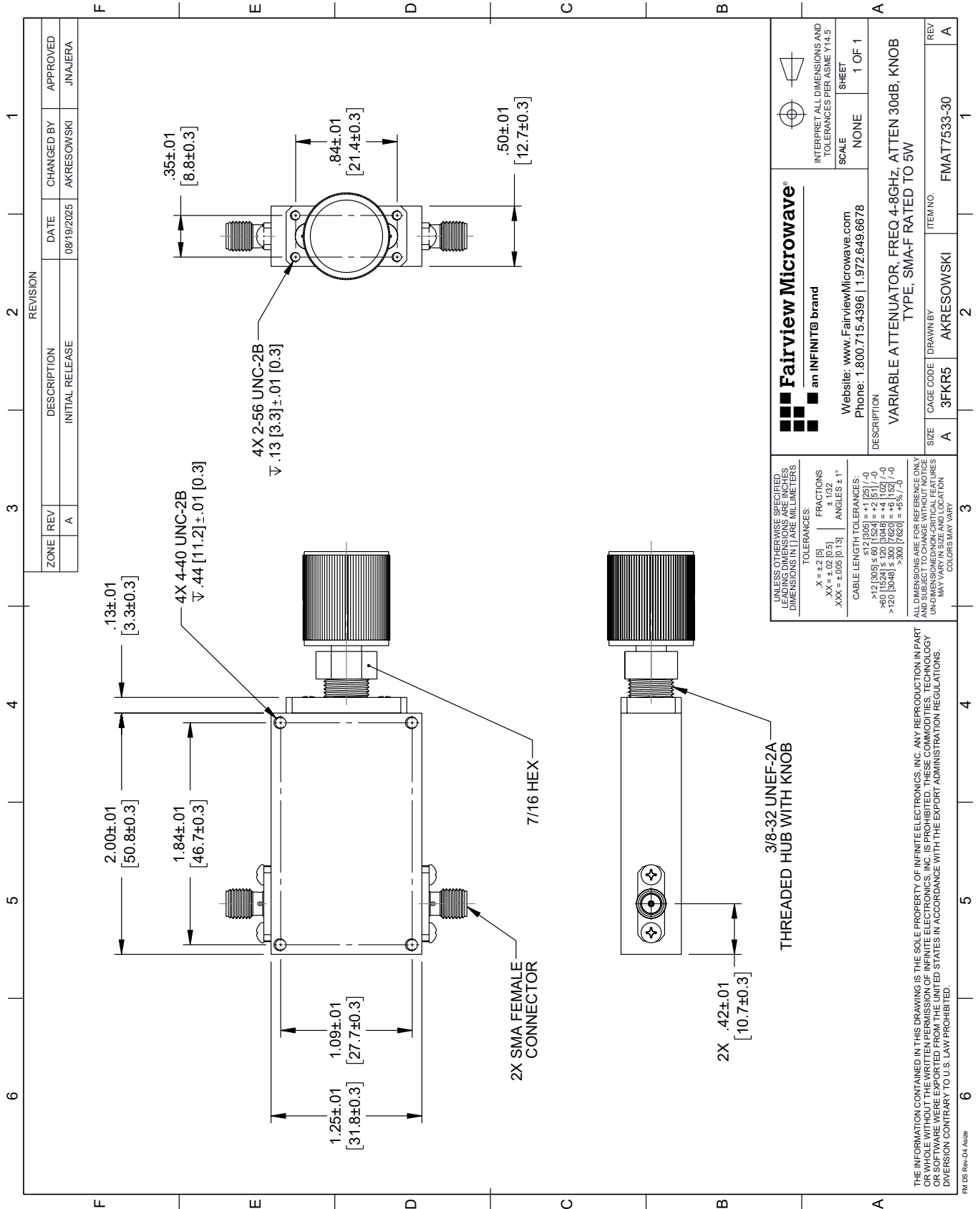
For additional information on this product, please click the following link: [0 to 30 dB Variable Attenuator, SMA Female to SMA Female from 4 GHz to 8 GHz Rated to 5 Watts FMAT7533-30](#)

URL: <https://www.fairviewmicrowave.com/30db-continuously-variable-attenuator-sma-female-sma-female-5-watts-fmat7533-30-p.aspx>

The information contained within this document is accurate to the best of our knowledge and representative of the part described herein. It may be necessary to make modifications to the part and/or the documentation of the part in order to implement improvements. Fairview Microwave reserves the right to make such changes as required. Unless otherwise stated, all specifications are nominal. Fairview Microwave does not make any representation or warranty regarding the suitability of the part described herein for any particular purpose, and Fairview Microwave does not assume liability arising out of the use of any part or document.

# FMAT7533-30 CAD Drawing

0 to 30 dB Variable Attenuator, SMA Female to SMA Female from 4 GHz to 8 GHz Rated to 5 Watts



**Fairview Microwave®**  
an INFINIT® brand

Website: [www.FairviewMicrowave.com](http://www.FairviewMicrowave.com)  
Phone: 1.800.715.4396 | 1.972.649.6678

INTERPRET ALL DIMENSIONS AND TOLERANCES PER ASME Y14.5

SCALE: NONE  
SHEET: 1 OF 1

DESCRIPTION: VARIABLE ATTENUATOR, FREQ 4-8GHz, ATTEN 30dB, KNOB TYPE, SMA-F RATED TO 5W

SIZE: A  
CAGE CODE: 3FKR5  
DRAWN BY: AKRESOWSKI  
ITEM NO.: FMAT7533-30

UNLESS OTHERWISE SPECIFIED, LEADING DIMENSIONS ARE IN INCHES, DIMENSIONS IN [ ] ARE MILLIMETERS.

TOLERANCES:  
X = ± 2 [5] FRACTIONS ± 1/32  
.XX = ± 0.02 [0.5] ANGLES ± 1°  
.XXX = ± 0.05 [0.13]

CABLE LENGTH TOLERANCES:  
≤ 12 [305] ± 0.1 [25] / -0  
> 12 [305] ≤ 60 [1524] = ± 2 [51] / -0  
> 60 [1524] ≤ 120 [3048] = ± 4 [102] / -0  
> 120 [3048] ≤ 300 [7620] = ± 8 [203] / -0

ALL DIMENSIONS ARE FOR REFERENCE ONLY. UNLESS OTHERWISE SPECIFIED, LEADING DIMENSIONS ARE IN INCHES, DIMENSIONS IN [ ] ARE MILLIMETERS. UNDIMENSIONED NON-CRITICAL FEATURES MAY VARY IN SIZE AND LOCATION. COLORS MAY VARY.

THE INFORMATION CONTAINED IN THIS DRAWING IS THE SOLE PROPERTY OF INFINITE ELECTRONICS, INC. ANY REPRODUCTION IN PART OR WHOLE WITHOUT THE WRITTEN PERMISSION OF INFINITE ELECTRONICS, INC. IS PROHIBITED. THESE COMMODITIES, TECHNOLOGY OR SOFTWARE ARE EXPORTED FROM THE UNITED STATES IN ACCORDANCE WITH THE EXPORT ADMINISTRATION REGULATIONS. DIVISION CONTRARY TO U.S. LAW PROHIBITED.

FM DS Rev-D4 Alt2