

0 to 11 dB Step Attenuator with a 1 dB Step SMA Female Interface Rated Up to 3 GHz and Up to 2 Watts in a Push Button Design



FMAT1047S

Features

- 1, 2, 3, and 5 dB step buttons
- 0 to 11 dB Attenuation
- 1.5:1 VSWR Maximum
- 0.7 dB Attenuation Accuracy Maximum
- SMA Female Connectors
- Maximum Power 2 Watts (CW)

Applications

- Instrumentation
- Precision Measurements
- Prototyping and Characterization
- Production Systems

Description

The FMAT1047S is a Step Attenuator that has 11 dB of total attenuation with 1, 2, 3, and 5 dB push button steps, designed across the frequency range of DC to 3 GHz. Select button for desired attenuation level, total attenuation is the sum of all buttons selected. The design is tried and true technology that offers exceptional performance characteristics that include 2.5 dB maximum insertion loss, and a maximum VSWR of 1.5:1. The design also features excellent attenuation accuracy with 0.8 dB maximum. The Aluminum package has SMA Female connectors, and operates within the temperature range of -20°C to 85°C.

Electrical Specifications

Description	Minimum	Typical	Maximum	Units
Frequency Range	DC		3	GHz
Impedance		50		Ohms
Insertion Loss			2.5	dB
Attenuation Value		0 to 11		dB
Step Size		1		dB
Step Type		Push Button		
Accuracy Statement		±0.7dB		
Input Power (CW)			2	Watts
Input Power, Peak 5 µs pulse width 2% duty cycle			100	Watts
VSWR			1.5:1	

Mechanical Specifications

Size

Length	4.17 in [105.92 mm]
Width	1.4 in [35.56 mm]
Height	0.79 in [20.07 mm]
Weight	0.24 lbs [108.86 g]
Body Material and Plating	Aluminum, Paint

Connectors

Description	Connector 1	Connector 2
Type	SMA Female	SMA Female

0 to 11 dB Step Attenuator with a 1 dB Step SMA Female Interface Rated Up to 3 GHz and Up to 2 Watts in a Push Button Design



FMAT1047S

Connectors

Description	Connector 1	Connector 2
Contact Material and Plating	Beryllium Copper, Gold	Beryllium Copper, Gold
Body Material and Plating	Brass, Gold	Brass, Gold

Environmental Specifications

Temperature

Operating Range -20 to 85 deg C

Compliance Certifications (see [product page](#) for current document)

Plotted and Other Data

Notes:

0 to 11 dB Step Attenuator with a 1 dB Step SMA Female Interface Rated Up to 3 GHz and Up to 2 Watts in a Push Button Design from Fairview Microwave is in-stock and available to ship same-day. All of our RF/microwave products are available off-the-shelf from our ISO 9001:2008 certified facilities in Lewisville, Texas. Fairview Microwave is RF on-demand.

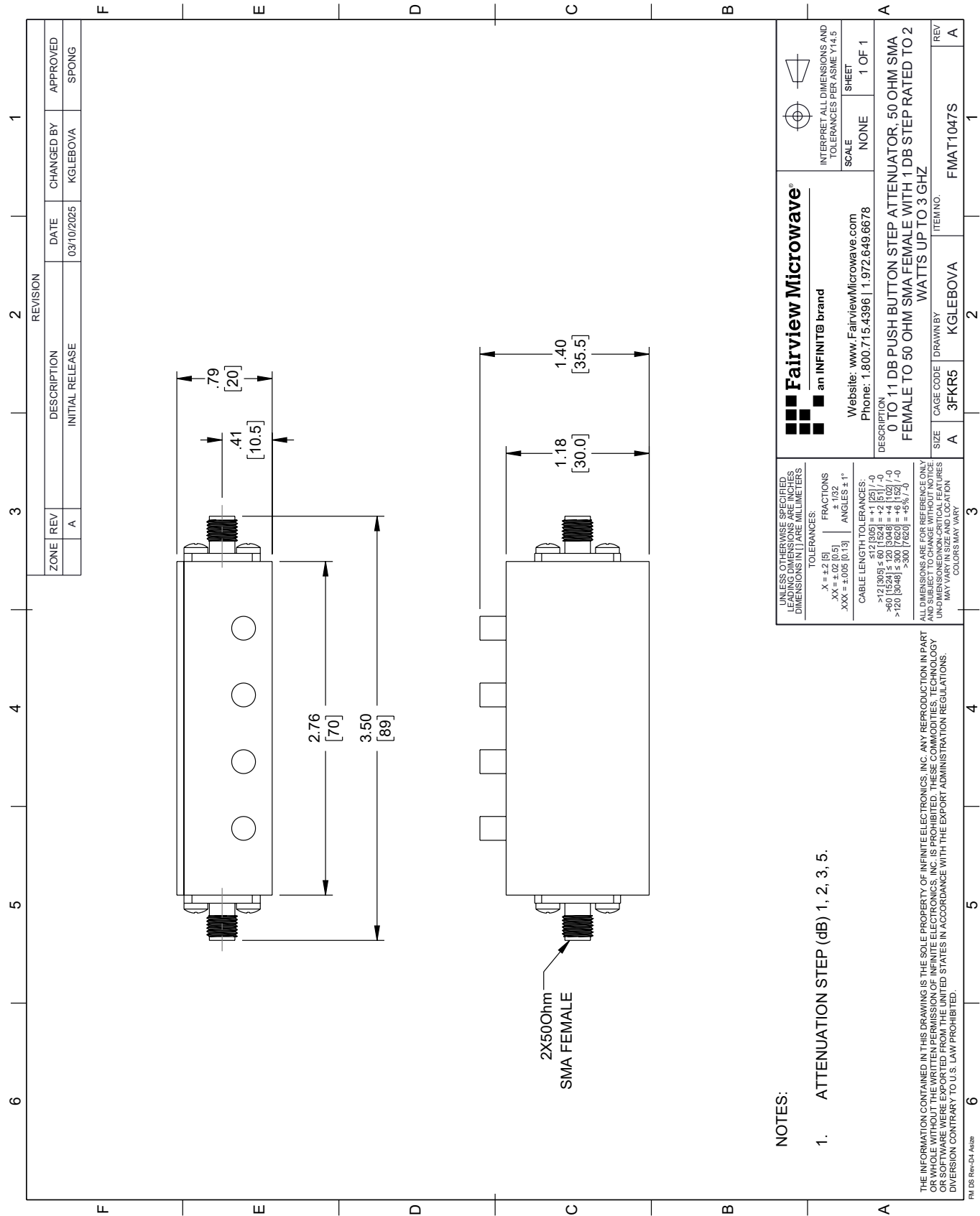
For additional information on this product, please click the following link: [0 to 11 dB Step Attenuator with a 1 dB Step SMA Female Interface Rated Up to 3 GHz and Up to 2 Watts in a Push Button Design FMAT1047S](#)

URL: <https://www.fairviewmicrowave.com/11db-step-attenuator-1db-sma-female-dc-3-ghz-2-watts-fmat1047s-p.aspx>

The information contained within this document is accurate to the best of our knowledge and representative of the part described herein. It may be necessary to make modifications to the part and/or the documentation of the part in order to implement improvements. Fairview Microwave reserves the right to make such changes as required. Unless otherwise stated, all specifications are nominal. Fairview Microwave does not make any representation or warranty regarding the suitability of the part described herein for any particular purpose, and Fairview Microwave does not assume liability arising out of the use of any part or document.

FMAT1047S CAD Drawing

0 to 11 dB Step Attenuator with a 1 dB Step SMA Female Interface Rated
Up to 3 GHz and Up to 2 Watts in a Push Button Design



Fairview Microwave® an INFINITI® brand		Website: www.FairviewMicrowave.com Phone: 1.800.715.4396 1.972.649.6678	INTERPRET ALL DIMENSIONS AND TOLERANCES PER ASME Y14.5
UNLESS OTHERWISE SPECIFIED, DIMENSIONS ARE IN INCHES. DIMENSIONS IN [] ARE IN MILLIMETERS.		SCALE: NONE	SHEET: 1 OF 1
TOLERANCES: X = ±.05 XX = ±.02 [0.5] XXX = ±.005 [0.13]		FRACTIONS: ± 1/32 ANGLES: ± 1°	
CABLE LENGTH TOLERANCES: ≤ 12 [305] = ±.005 [0.13] > 12 [305] ≤ 60 [1524] = ±.01 [0.25] > 60 [1524] ≤ 120 [3048] = ±.02 [0.51] > 120 [3048] ≤ 300 [7620] = ±.03 [0.76] > 300 [7620] = ±.05 [1.27]		ALL DIMENSIONS ARE FOR REFERENCE ONLY. DIMENSIONS OF INDIVIDUAL PARTS MAY VARY IN SIZE AND LOCATION. COLORS MAY VARY.	
DESCRIPTION 0 TO 11 DB PUSH BUTTON STEP ATTENUATOR, 50 OHM SMA FEMALE TO 50 OHM SMA FEMALE WITH 1 DB STEP RATED TO 2 WATTS UP TO 3 GHZ		ITEM NO.	
SIZE		DRAWN BY	
A		KGLEBOVA	
CAGE CODE		FMAT1047S	
REV		A	

- NOTES:
- ATTENUATION STEP (dB) 1, 2, 3, 5.