

## 138 MHz - 174 MHz 2 Folded Dipole antenna, 7 dBi gain, 1/2 Wave Bidirectional pattern, V-pol, Type N Female Connector

The exposed dipole two element antenna FMANED1002 from Fairview Microwave is a high-performance RF component operates from 138 to 174 MHz for VHF applications like boosting radar, GPR/WPR, FM Radio, TV broadcasts, public safety, LMR / PMR and aviation where directivity and coverage are very important. The FMANED1002 from Fairview Microwave Antennas is a high-performance, two element exposed folded dipole antenna specifically designed to aesthetically pleasing design. The Fairview Microwave Antennas FMANED1002 has 7 dBi / 4.85 dBd of high gain which is ideal for these applications.

The FMANED1002 exposed dipole antennas are robust, outdoor, weatherproof, and high velocity wind sustainable antennas made up of high-grade aluminum alloys for longevity and resistant to corrosion. These dipole antennas are side mounted 1/2 wave spacing from the mast, has a pigtail terminated with 1 Type N female connector. This premium quality 2-bay dipole antenna has bidirectional pattern with 100W maximum power handling capability. The folded exposed dipole FMANED1002 has 35 vertical beamwidth. This antenna has Vertical polarization and the included mounting kit allows for very easy and quick time installations with less effort. These exposed dipoles are already tuned to be Half wavelength away from the mast and do not require any further field adjustments.

The central support mast is precisely designed for easy dipole attachments which fit tightly for error free and quick installations and ease for transportation. FM's 138 to 174 MHz two element half wave exposed folded dipole FMANED1002 antennas with 7 dBi/ 4.85 dBd max gain for VHF communication applications. This half wave folded exposed dipole antenna with N Female Type connector is in stock and ready to ship the same day. Contact our knowledgeable and friendly technical support and sales staff for your answers on antennas or other Fairview Microwave products.

### Configuration

Gain	7
Polarization	Vertical
Connector Type	N Female
Number of Ports	1

### Electrical Specifications

Description	Min	Typ	Max	Units
Frequency Range	138		174	MHz
Input VSWR			1.8:1	
Gain		7		dBi
Vertical (Elevation) Beam Width		35		Degrees
Input Power			100	Watts

### Mechanical Specifications

Radome Material	Aluminum Alloy
<b>Size</b>	
Length	118.1 in [299.97 cm]
Width	46.9 in [119.13 cm]
Height	2.4 in [60.96 mm]
Mounting Mast Diameter	1.5748 to 1.9685 in [40.00 to 50.00 mm]



### Features:

- Frequency coverage for 138 MHz to 174 MHz with Type N Female connector
- Very High Gain 7 dBi / 4.85 dBd antennas
- Easy and quick time to installations
- Industrially tuned dipoles made of high-grade aluminum alloys
- 2-Folded dipole antenna has bidirectional pattern with 1/2 wave spacing
- 35° vertical beamwidth with Vertical Polarization
- 100 W max input power

### Applications:

- Outdoor point-to-point (PtP) or point-to-multipoint (PtMP) applications
- VHF radio applications supported with Trunking for two-way radio communications
- Wireless LAN systems, IOT and IIOT low data high coverage applications
- TV Broadcasts and FM radio applications
- Air traffic controllers / Public Safety / Emergency services / Marine communications
- Tetra and P-25 Applications exclusively supported
- Land Mobile Radio (LMR) and Private Mobile Radio (PMR)

Fairview Microwave  
301 Leora Ln., Suite 100  
Lewisville, TX 75056  
Tel: 1-800-715-4396 / (972) 649-6678  
Fax: (972) 649-6689  
[www.fairviewmicrowave.com](http://www.fairviewmicrowave.com)  
[sales@fairviewmicrowave.com](mailto:sales@fairviewmicrowave.com)

Weight 75.9 lbs [34.43 kg]

### Environmental Specifications

Wind Loading 124.274 MPH [200 KPH]  
Humidity 5 to 95

**Compliance Certifications** (see [product page](#) for current document)

### Plotted and Other Data

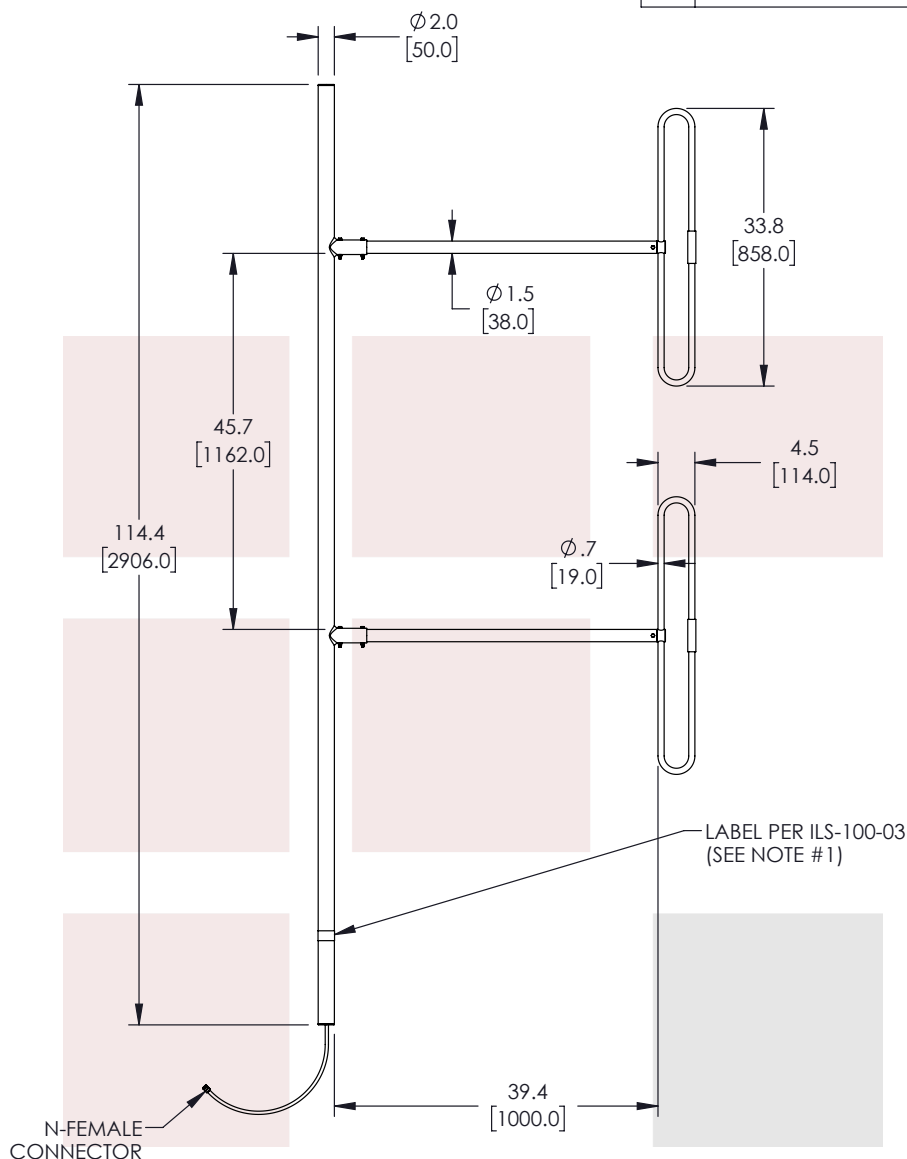
Notes:

138 MHz - 174 MHz 2 Folded Dipole antenna, 7 dBi gain, 1/2 Wave Bidirectional pattern, V-pol, Type N Female Connector from Fairview Microwave is in-stock and available to ship same-day. All of our RF/microwave products are available off-the-shelf from our ISO 9001:2008 certified facilities in Lewisville, Texas. Fairview Microwave is RF on-demand.

For additional information on this product, please click the following link: [138 MHz - 174 MHz 2 Folded Dipole antenna, 7 dBi gain, 1/2 Wave Bidirectional pattern, V-pol, Type N Female Connector FMANED1002](#)

URL: <https://www.fairviewmicrowave.com/7-dbi-antenna-138-174-mhz-n-type-connector-fmaned1002-p.aspx>

The information contained in this document is accurate to the best of our knowledge and representative of the part described herein. It may be necessary to make modifications to the part and/or the documentation of the part, in order to implement improvements. Fairview Microwave reserves the right to make such changes as required. Unless otherwise stated, all specifications are nominal. Fairview Microwave does not make any representation or warranty regarding the suitability of the part described herein for any particular purpose, and Fairview Microwave does not assume any liability arising out of the use of any part or documentation.



REVISIONS			
REV.	DESCRIPTION	DATE	APPROVED
A	INITIAL RELEASE	3/31/22	KHIETPAS

**NOTES:**

1. LABEL PER ILS-100-03 (FOR INTERNAL REFERENCE ONLY).  
LABEL LOCATION FOR REFERENCE ONLY.

**REGULATORY COMPLIANCE:**

EU RoHS DIRECTIVE (MOST RECENT RELEASED VERSION)

THESE COMMODITIES, TECHNOLOGY OR SOFTWARE WERE EXPORTED FROM THE UNITED STATES IN ACCORDANCE WITH THE EXPORT ADMINISTRATION REGULATIONS. DIVERSION CONTRARY TO U.S. LAW PROHIBITED.

TITLE

138 MHz - 174 MHz 2 Folded Dipole antenna, 7 dBi gain, 1/2 Wave Bidirectional pattern, V-pol, Type N Female Connector

UNLESS OTHERWISE SPECIFIED LEADING DIMENSIONS ARE INCHES  
DIMENSIONS IN [ ] ARE MILLIMETERS

**TOLERANCES:**

.X = ±.2 [5.08] FRACTIONS  
.XX = ±.02 [.51] ± 1/32  
.XXX = ±.005 [.13] ANGLES ± 1°

**CABLE LENGTH (L) TOLERANCES:**

L ≤ 12 [305] = +1 [25] / -0  
12 [305] < L ≤ 60 [1524] = +2 [51] / -0  
60 [1524] < L ≤ 120 [3048] = +4 [102] / -0  
120 [3048] < L ≤ 300 [7620] = +6 [152] / -0  
300 [7620] < L = +5%L / -0

THIRD-ANGLE PROJECTION



THE INFORMATION AND DESIGN IN THIS DOCUMENT IS THE PROPERTY OF FAIRVIEW MICROWAVE CORPORATION. ALL RIGHTS RESERVED.

SHEET 1 OF 1

SCALE

N/A

SIZE	CAGE CODE	DRAWN BY	ITEM NO.	REV
A	3FKR5	DMAY	FMANED1002	A

T-Rev.D