

Engineering Grade SMA Male (Plug) to Mini SMP Male (Plug) Smooth Bore Adapter with Passivated Stainless Steel Body



FMAD10181

Configuration

- SMA Male Connector 1
- Smooth Bore Mini SMP Male Connector 2
- 50 Ohms Impedance
- Engineering Grade Design
- Straight Body Geometry

Features

- VSWR of 1.15:1 max up to 18 GHz
- SMA interface meets MIL-STD-348B
- Mini SMP interface meets MIL-STD-348B
- Gold over Nickel Alloy over Copper Plated Brass Contact

Applications

- Enables Between Series Connections
- General Purpose Test

Description

SMA male to Mini SMP male smooth bore adapter part number FMAD10181 from Fairview Microwave is in-stock and ships same day. This Fairview SMA to Mini SMP adapter has a male to male gender configuration and is built of durable stainless steel in an engineering grade design. FMAD10181 SMA male to Mini SMP male adapter operates to 18 GHz. The Fairview Microwave RF adapter provides excellent VSWR of 1.15:1 maximum. The SMA connector mates mechanically with commercially available 3.5mm and 2.92mm (K) connectors.

RF adapters can be used to enable connections between two connector types that would otherwise not mate. Certain RF adapter configurations can also be used to protect connectors on expensive equipment where the number of connect and disconnect cycles is high. An RF, microwave, or millimeter wave adapter is connected to the equipment and the commonly changed connection is made with the adapter which can be easily replaced when it wears out after high usage; such adapters are referred to as connector savers. Fairview Microwave also offers bulkhead, panel mount, hermetically sealed, reverse polarity, and isolated ground adapter varieties to serve all of your RF, microwave and millimeter wave needs.

Electrical Specifications

Description	Minimum	Typical	Maximum	Units
Frequency Range	DC		18	GHz
Impedance		50		Ohms
VSWR			1.15:1	
Insertion Loss			0.254	dB
Operating Voltage (AC)			325	Vrms
Dielectric Withstanding Voltage (AC)			500	Vrms
Insulation Resistance	5,000			MOhms

Electrical Specification Notes:
Insertion loss = $0.06 \cdot \sqrt{\text{FGHz}}$ dB

Mechanical Specifications

Size

Length	0.72 in [18.19 mm]
Width	0.31 in [7.98 mm]
Height	0.31 in [7.98 mm]
Weight	0.05 lbs [22.68 g]

Engineering Grade SMA Male (Plug) to Mini SMP Male (Plug)
Smooth Bore Adapter with Passivated Stainless Steel Body



FMAD10181

Description	Connector 1	Connector 2
Polarity	Standard	Standard
Interface Specification	MIL-STD-348B	MIL-STD-348B
Mating Cycles, Min	500	1,000
Mating Torque	7 to 9.5 in-lbs 0.79 to 1.07 Nm	
Contact Captivation Axial Force, Min	6.1 lbs [2.77 kg]	1.5 lbs [680.39 g]
Coupling Proof Torque	15 in-lbs [1.7 Nm]	
Coupling Retention, Min	60.7 lbs [27.53 kg]	

Mechanical Specification Notes:
Engagement Force: 1.5lbs typ
Disengagement Force: 1.5lbs typ

Material Specifications

Description	Connector 1		Connector 2	
	Material	Plating	Material	Plating
Type	SMA Male		Smooth Bore Mini SMP Male	
Contact	Brass	Gold over Nickel Alloy over Copper	Brass	Gold over Nickel Alloy over Copper
Insulation	PEI		PTFE	
Outer Conductor	Passivated Stainless Steel		Passivated Stainless Steel	
Body	Passivated Stainless Steel		Passivated Stainless Steel	
Gasket	Silicone		Silicone	

Environmental Specifications

Temperature

Operating Range

Humidity

Thermal Shock

Salt Spray

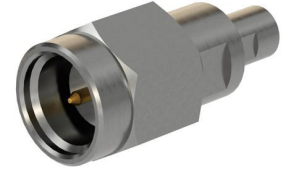
-40 to +165 °C

MIL-STD-202, Method 106

MIL-STD-202, Method 107, Condition B

MIL-STD-202, Method 101, Condition B

Engineering Grade SMA Male (Plug) to Mini SMP Male (Plug) Smooth Bore Adapter with Passivated Stainless Steel Body



FMAD10181

Compliance Certifications (see [product page](#) for current document)

Plotted and Other Data

Engineering Grade SMA Male (Plug) to Mini SMP Male (Plug) Smooth Bore Adapter with Passivated Stainless Steel Body from Fairview Microwave is in-stock and available to ship same-day. All of our RF/microwave products are available off-the-shelf from our ISO 9001:2008 certified facilities in Lewisville, Texas. Fairview Microwave is RF on-demand.

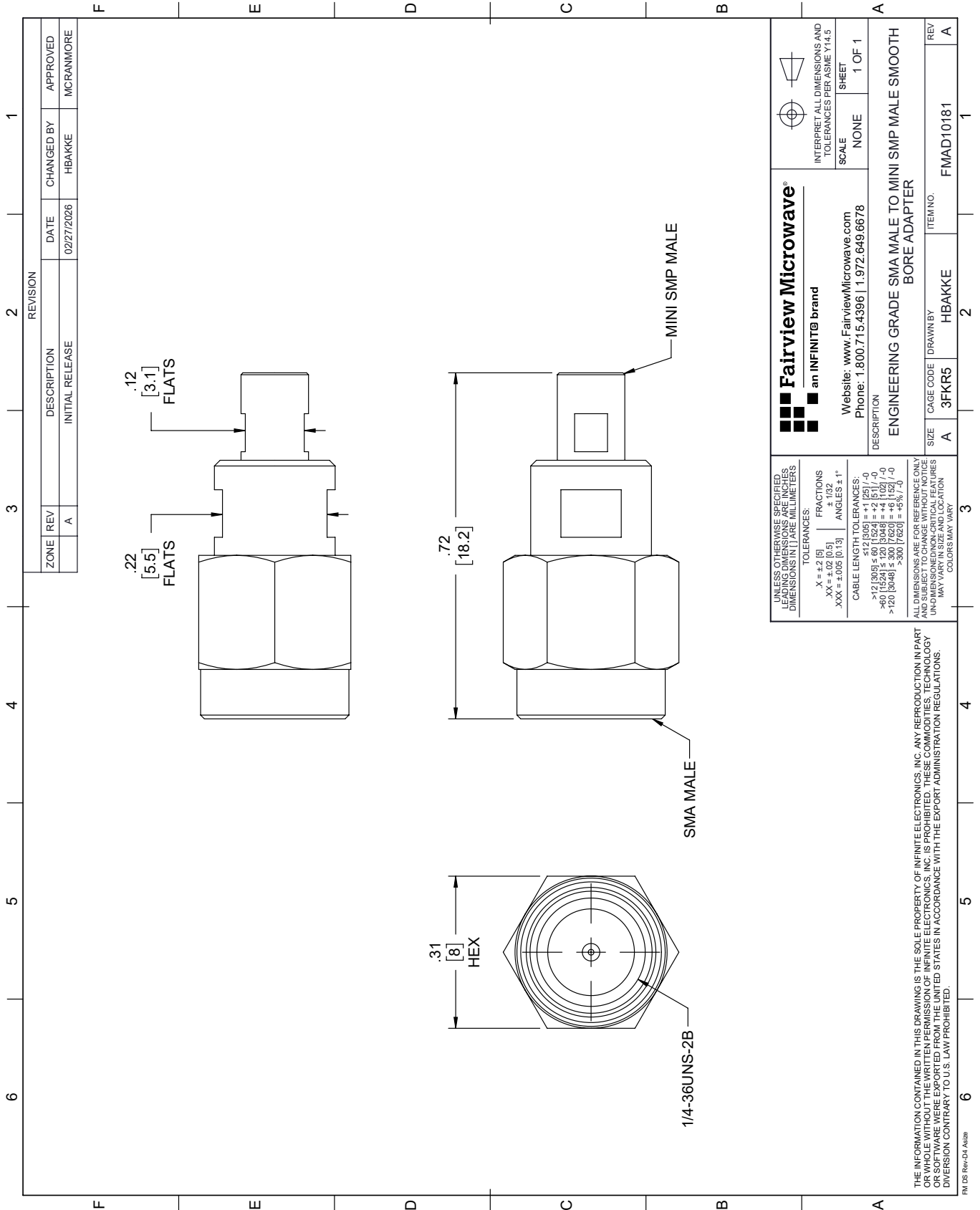
For additional information on this product, please click the following link: [Engineering Grade SMA Male \(Plug\) to Mini SMP Male \(Plug\) Smooth Bore Adapter with Passivated Stainless Steel Body FMAD10181](#)

URL: <https://www.fairviewmicrowave.com/product/rf-adapters/engineering-grade-sma-male-to-mini-smp-male-smooth-bore-adapter-mil-std-202-method-106-with-passivated-stainless-steel-body-fmad10181.html>

The information contained within this document is accurate to the best of our knowledge and representative of the part described herein. It may be necessary to make modifications to the part and/or the documentation of the part in order to implement improvements. Fairview Microwave reserves the right to make such changes as required. Unless otherwise stated, all specifications are nominal. Fairview Microwave does not make any representation or warranty regarding the suitability of the part described herein for any particular purpose, and Fairview Microwave does not assume liability arising out of the use of any part or document.

FMAD10181 CAD Drawing

Engineering Grade SMA Male (Plug) to Mini SMP Male (Plug) Smooth Bore Adapter with Passivated Stainless Steel Body



ZONE	REV	DESCRIPTION	DATE	CHANGED BY	APPROVED
	A	INITIAL RELEASE	02/27/2026	HBAKKE	MCRANMIRE

REVISION	1	2	3	4	5	6

Fairview Microwave®
an INFINIT® brand

Website: www.FairviewMicrowave.com
Phone: 1.800.715.4396 | 1.972.649.6678

INTERPRET ALL DIMENSIONS AND TOLERANCES PER ASME Y14.5

SCALE: NONE SHEET: 1 OF 1

DESCRIPTION: ENGINEERING GRADE SMA MALE TO MINI SMP MALE SMOOTH BORE ADAPTER

SIZE: A CAGE CODE: 3FKR5 DRAWN BY: HBAKKE ITEM NO.: FMAD10181 REV: A

UNLESS OTHERWISE SPECIFIED, DIMENSIONS ARE IN INCHES. DIMENSIONS IN [] ARE MILLIMETERS.

TOLERANCES:
 .X = ±.2 [5] FRACTIONS ±.132
 .XX = ±.02 [0.5] ANGLES ± 1°
 .XXX = ±.005 [0.13]

CABLE LENGTH TOLERANCES:
 >12 [305] ≤ 60 [1524] = ±.1 [25] / -0
 >60 [1524] ≤ 120 [3048] = ±.4 [102] / -0
 >120 [3048] ≤ 300 [7620] = ±.8 [20] / -0

ALL DIMENSIONS ARE FOR REFERENCE ONLY. UNLESS OTHERWISE SPECIFIED, DIMENSIONS ARE IN INCHES. DIMENSIONS IN [] ARE MILLIMETERS. COLORS MAY VARY.

THE INFORMATION CONTAINED IN THIS DRAWING IS THE SOLE PROPERTY OF INFINITE ELECTRONICS, INC. ANY REPRODUCTION IN PART OR WHOLE WITHOUT THE WRITTEN PERMISSION OF INFINITE ELECTRONICS, INC. IS PROHIBITED. THESE COMMODITIES, TECHNOLOGY OR SOFTWARE WERE EXPORTED FROM THE UNITED STATES IN ACCORDANCE WITH THE EXPORT ADMINISTRATION REGULATIONS. DIVISION CONTRARY TO U.S. LAW PROHIBITED.

FM DS Rev-D4 A42z