

Engineering Grade 2.4mm Female (Jack) to SMP Female (Jack) Push-On Adapter



FMAD10157

Configuration

- 2.4mm Female Connector 1
- Push-On SMP Female Connector 2
- 50 Ohms Impedance
- Engineering Grade Design
- Straight Body Geometry

Features

- VSWR of 1.3:1 max up to 40 GHz
- 2.4mm interface meets MIL-STD-348B
- SMP interface meets MIL-STD-348B
- Gold over Nickel Alloy over Copper Plated Beryllium Copper Contact

Applications

- Enables Between Series Connections
- General Purpose Test

Description

2.4mm female to SMP female push-on adapter part number FMAD10157 from Fairview Microwave is in-stock and ships same day. This Fairview 2.4mm to SMP adapter has a female to female gender configuration in a engineering grade design. FMAD10157 2.4mm female to SMP female adapter operates to 40 GHz. The Fairview Microwave RF adapter provides good VSWR of 1.3:1 maximum. The 2.4mm connector mates mechanically with commercially available 1.85mm (V) connectors.

RF adapters can be used to enable connections between two connector types that would otherwise not mate. Certain RF adapter configurations can also be used to protect connectors on expensive equipment where the number of connect and disconnect cycles is high. An RF, microwave, or millimeter wave adapter is connected to the equipment and the commonly changed connection is made with the adapter which can be easily replaced when it wears out after high usage; such adapters are referred to as connector savers. Fairview Microwave also offers bulkhead, panel mount, hermetically sealed, reverse polarity, and isolated ground adapter varieties to serve all of your RF, microwave and millimeter wave needs.

Electrical Specifications

| Description | Minimum | Typical | Maximum | Units |
|--------------------------------------|---------|---------|---------|-------|
| Frequency Range | DC | | 40 | GHz |
| Impedance | | 50 | | Ohms |
| VSWR | | | 1.3:1 | |
| Insertion Loss | | | 0.316 | dB |
| Operating Voltage (AC) | | | 150 | Vrms |
| Dielectric Withstanding Voltage (AC) | | | 500 | Vrms |
| Insulation Resistance | 5,000 | | | MOhms |

Electrical Specification Notes:
Insertion loss = 0.05*SQRT(FGHz) dB

Mechanical Specifications

Size

| | |
|--------|--------------------|
| Length | 1.02 in [25.98 mm] |
| Width | 0.35 in [8.99 mm] |
| Height | 0.35 in [8.99 mm] |

Engineering Grade 2.4mm Female (Jack) to SMP Female (Jack) Push-On Adapter



FMAD10157

| Weight | 0.05 lbs [22.68 g] | |
|--------------------------------------|-------------------------------------|--------------|
| Description | Connector 1 | Connector 2 |
| Polarity | Standard | Standard |
| Interface Specification | MIL-STD-348B | MIL-STD-348B |
| Mating Cycles, Min | 500 | |
| Mating Torque | 7.08 to 9.74 in-lbs 0.80 to 1.10 Nm | |
| Contact Captivation Axial Force, Min | 4.5 lbs [2.04 kg] | |
| Coupling Proof Torque | 15 in-lbs [1.7 Nm] | |

Mechanical Specification Notes:

Engagement Force: ≤15 lbs (Full Detent), ≤10 lbs (Limited Detent), ≤2 lbs (Smooth Bore & Catchers mitt)
 Disengagement Force: ≥5 lbs (Full Detent), ≥2 lbs (Limited Detent), ≥0.5 lbs (Smooth Bore & Catchers mitt)
 Durability (Mating): ≥100 (Full Detent), ≥500 (Limited Detent), ≥1000 (Smooth Bore & Catchers mitt) Axial
 Misalignment: +0.00/-0.25(+.000/- .010)
 Radial Misalignment: +/-0.25(0.010)

Material Specifications

| Description | Connector 1 | | Connector 2 | |
|-----------------|----------------------------|------------------------------------|--------------------|------------------------------------|
| | Material | Plating | Material | Plating |
| Type | 2.4mm Female | | Push-On SMP Female | |
| Contact | Beryllium Copper | Gold over Nickel Alloy over Copper | Beryllium Copper | Gold over Nickel Alloy over Copper |
| Insulation | PPO | | PPO | |
| Outer Conductor | Passivated Stainless Steel | | Beryllium Copper | Gold over Nickel Alloy over Copper |
| Body | Passivated Stainless Steel | | Beryllium Copper | Gold over Nickel Alloy over Copper |

Environmental Specifications

Temperature

Operating Range -55 to +105 °C
 Humidity MIL-STD-202, Method 106
 Thermal Shock MIL-STD-202, Method 107, Condition B
 Salt Spray MIL-STD-202, Method 101, Condition B

Engineering Grade 2.4mm Female (Jack) to SMP Female (Jack) Push-On Adapter



FMAD10157

Compliance Certifications (see [product page](#) for current document)

Plotted and Other Data

Engineering Grade 2.4mm Female (Jack) to SMP Female (Jack) Push-On Adapter from Fairview Microwave is in-stock and available to ship same-day. All of our RF/microwave products are available off-the-shelf from our ISO 9001:2008 certified facilities in Lewisville, Texas. Fairview Microwave is RF on-demand.

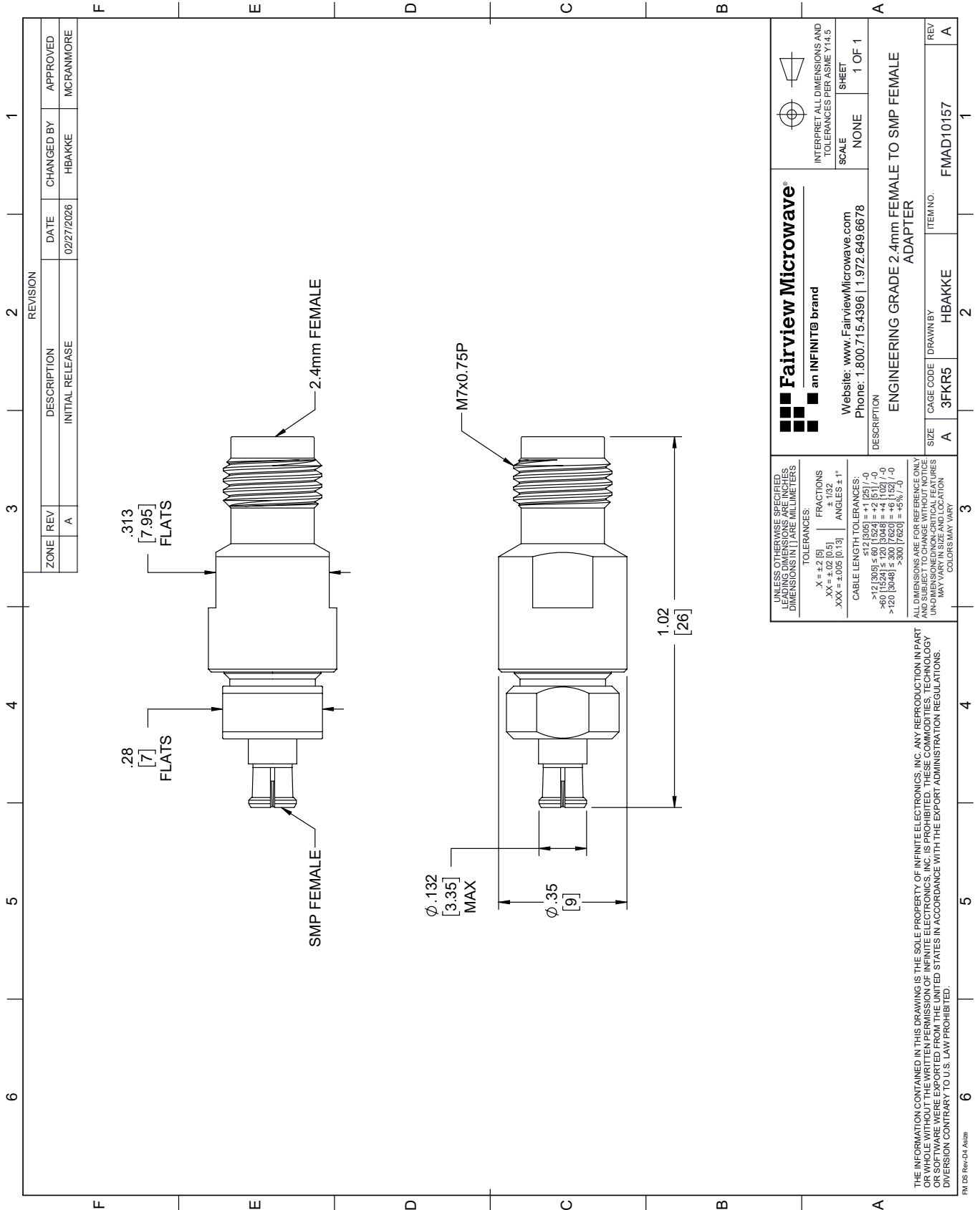
For additional information on this product, please click the following link: [Engineering Grade 2.4mm Female \(Jack\) to SMP Female \(Jack\) Push-On Adapter FMAD10157](#)

URL: <https://www.fairviewmicrowave.com/product/rf-adapters/engineering-grade-2.4mm-female-to-smp-female-push-on-adapter-mil-std-202-method-106-with-passivated-stainless-steel-body-fmad10157.html>

The information contained within this document is accurate to the best of our knowledge and representative of the part described herein. It may be necessary to make modifications to the part and/or the documentation of the part in order to implement improvements. Fairview Microwave reserves the right to make such changes as required. Unless otherwise stated, all specifications are nominal. Fairview Microwave does not make any representation or warranty regarding the suitability of the part described herein for any particular purpose, and Fairview Microwave does not assume liability arising out of the use of any part or document.

FMAD10157 CAD Drawing

Engineering Grade 2.4mm Female (Jack) to SMP Female (Jack) Push-On Adapter



| REVISION | | DATE | CHANGED BY | APPROVED | |
|----------|-----|-----------------|------------|------------|-----------|
| ZONE | REV | DESCRIPTION | DATE | CHANGED BY | APPROVED |
| | A | INITIAL RELEASE | 02/27/2026 | HBAKKE | MCRANMIRE |

| | | | |
|---------------------------------------------------------------------|--|-----------------------------------------------------------------------------------------------------------------------------|----------------------------------------------------------------------------------------|
| Fairview Microwave an INFINIT® brand | | Website: www.FairviewMicrowave.com Phone: 1.800.715.4396 1.972.649.6678 | INTERPRET ALL DIMENSIONS AND TOLERANCES PER ASME Y14.5 SCALE: NONE SHEET: 1 OF 1 |
| DESCRIPTION ENGINEERING GRADE 2.4mm FEMALE TO SMP FEMALE ADAPTER | | CAGE CODE: 3FKR5 DRAWN BY: HBAKKE ITEM NO.: FMAD10157 | REV: A |

UNLESS OTHERWISE SPECIFIED, DIMENSIONS ARE IN INCHES. DIMENSIONS IN [] ARE MILLIMETERS.

TOLERANCES:
 .X = ±.2 [5] FRACTIONS ± 1/32
 .XX = ±.02 [0.5] ANGLES ± 1°
 .XXX = ±.005 [0.13]

CABLE LENGTH TOLERANCES:
 <12 [305] ≤ 60 [1524] = ±.125 [-0
 >60 [1524] ≤ 120 [3048] = ±.102 [-0
 >120 [3048] ≤ 300 [7620] = ±.075 [-0
 >300 [7620] = ±.075 [-0]

ALL DIMENSIONS ARE FOR REFERENCE ONLY. DIMENSIONS OF CRITICAL FEATURES MAY VARY IN SIZE AND LOCATION. COLORS MAY VARY.

THE INFORMATION CONTAINED IN THIS DRAWING IS THE SOLE PROPERTY OF INFINITE ELECTRONICS, INC. ANY REPRODUCTION IN PART OR WHOLE WITHOUT THE WRITTEN PERMISSION OF INFINITE ELECTRONICS, INC. IS PROHIBITED. THESE COMMODITIES, TECHNOLOGY OR SOFTWARE WERE EXPORTED FROM THE UNITED STATES IN ACCORDANCE WITH THE EXPORT ADMINISTRATION REGULATIONS. DIVISION CONTRARY TO U.S. LAW PROHIBITED.

FM DS Rev-D4 Addn