

LSZH 1553 TRB 3-Lug Jack Bulkhead Non-Isolated to TRB 3-Lug Jack Bulkhead Non-Isolated Cable 78 Ohm TWCH-78-2 Coax in 60 Inch

The 78 ohm TRB 3-Lug jack bulkhead nonisolated to 78 ohm TRB 3-Lug jack bulkhead nonisolated 60 inch cable using 78 ohm TWCH-78-2 twinax, part number FM3MSA00587-60, from Fairview Microwave is in-stock and ships same day. This Fairview TRB 3-Lug to TRB 3-Lug cable assembly has a jack to jack gender configuration with 78 ohm flexible TWCH-78-2 twinax. Fairview Microwave's flexible RF cable assemblies are ideal for applications where tight bends and continual flexure are required. The FM3MSA00587-60 TRB 3-Lug jack to TRB 3-Lug jack cable assembly operates to 500 MHz. Our RF cable assembly with TRB 3-Lug bulkhead nonisolated interface allows designers to create external connections on their product enclosures, and can be used in a variety of other rack mount and panel mount applications.

Custom versions of most RF cable assemblies can be built and shipped same day. Custom cable assembly lengths can be obtained by specifying the desired length on the web site at time of order or by contacting a sales representative. Other RF cable assembly value added services including connector orientation or clocking, heat shrink booting and labeling are also available. RF testing can also be performed to document the electrical performance of your cable assembly.

Electrical Specifications

Description	Min	Typ	Max	Units
Frequency Range	DC		500	MHz
Capacitance		21.2 [69.55]		pF/ft [pF/m]
Operating Voltage (AC)			1,000	Vrms

Performance by Frequency

Description	F1	F2	F3	F4	F5	Units
Frequency	10	50	100	200	500	MHz
Insertion Loss (Typ.)	0.31	0.455	0.575	0.725	1	dB

Electrical Specification Notes:

The Insertion Loss data above is based on the performance specifications of the coax and connectors used in this assembly. The Insertion Loss includes an estimated insertion loss of 0.1 dB per connector.

Mechanical Specifications

Cable Assembly

Length*	60 in [152.4 cm]
Weight	0.314 lbs [142.43 g]

Cable

Cable Type	TWCH-78-2
Impedance	78 Ohms
Inner Conductor Type	Stranded
Inner Conductor Material and Plating	Copper, Silver
Dielectric Type	PE
Shield Layer 1	Silver Plated Copper
Jacket Material	HF POF, Blue

One Time Minimum Bend Radius	1.25 in [31.75 mm]
------------------------------	--------------------



Configuration:

- TRB 3-Lug Jack Bulkhead Non-Isolated
- TRB 3-Lug Jack Bulkhead Non-Isolated
- TWCH-78-2

Features:

- Max Frequency 500 MHz
- HF POF Jacket
- MIL-STD-1553
- -30°C to +80°C
- 78 ohms
- ROHS Low Smoke Zero Halogen
- Non-Toxic

Applications:

- General Purpose
- Laboratory Use
- Military Contractors
- MIL-STD-1553
- Data
- Safer Environments
- Ventilation critical areas
- Hospitals

Fairview Microwave
 301 Leora Ln., Suite 100
 Lewisville, TX 75056
 Tel: 1-800-715-4396 / (972) 649-6678
 Fax: (972) 649-6689
www.fairviewmicrowave.com
sales@fairviewmicrowave.com

Connectors

Description	Connector 1	Connector 2
Type	TRB 3-Lug Jack Bayonet	TRB 3-Lug Jack Bayonet
Mount Method	Bulkhead NonIsolated	Bulkhead NonIsolated
Impedance	78 Ohms	78 Ohms
Contact Material & Plating	Bronze, Gold 30 micro inches	Bronze, Gold 30 micro inches
Contact Plating Spec.	ASTM-B-488	ASTM-B-488
Dielectric Type	Teflon	Teflon
Outer Cond Material & Plating	Phosphor Bronze, Gold	Phosphor Bronze, Gold
Outer Cond Plating Spec.	30 micro inches	30 micro inches
Body Material & Plating	Brass, Nickel	Brass, Nickel
Body Plating Spec.	ASTM-B-733	ASTM-B-733

Environmental Specifications
Temperature

Operating Range -30 to +80 deg C

Compliance Certifications (see [product page](#) for current document)

Plotted and Other Data

Notes:

How to Order

Part Number Configuration: **FM3MSA00587 - xx uu**

cm = Centimeters
<blank> = Inches
Length

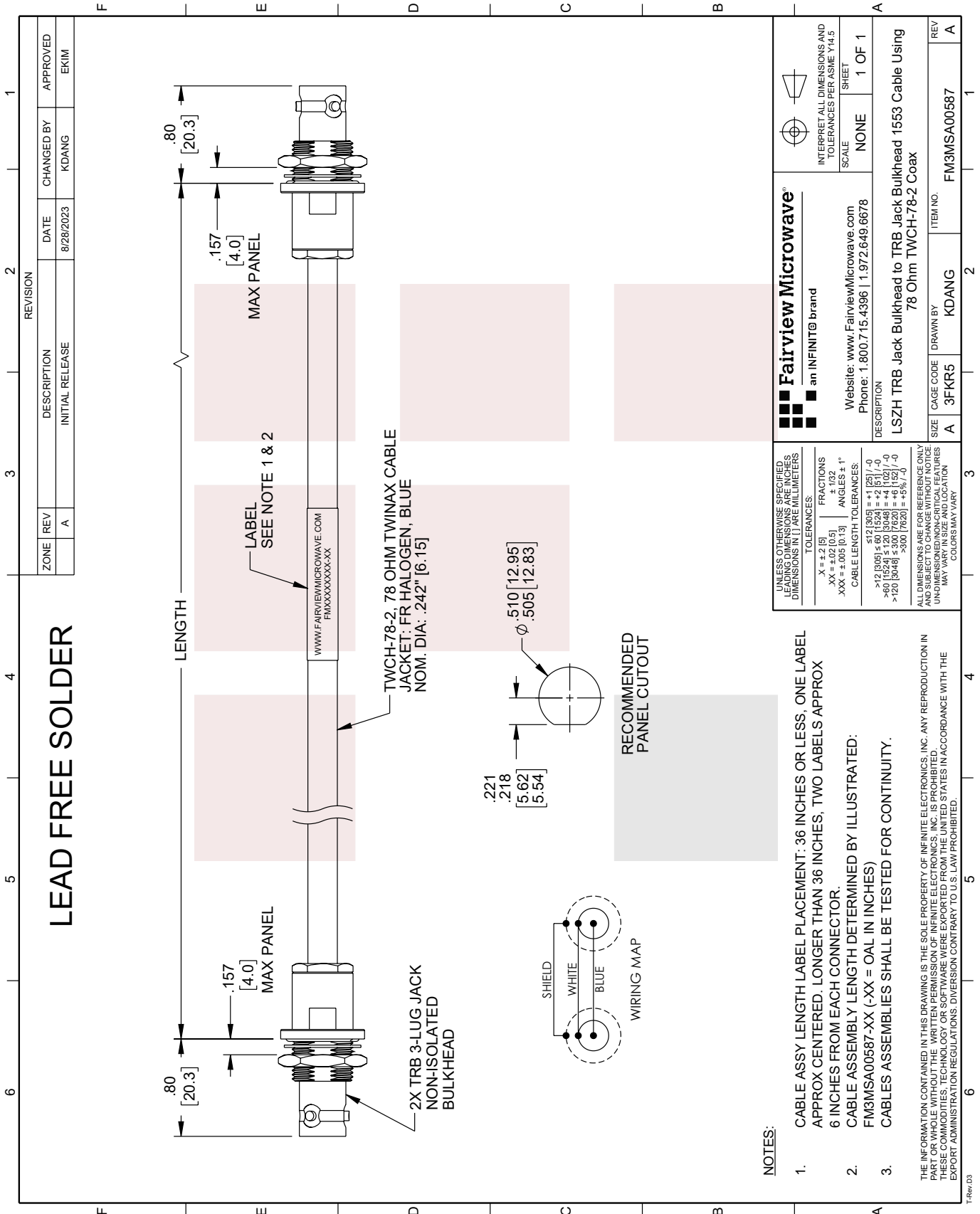
Example: FM3MSA00587-12 = 12 inches long cable
FM3MSA00587-100cm = 100 cm long cable

LSZH 1553 TRB 3-Lug Jack Bulkhead Non-Isolated to TRB 3-Lug Jack Bulkhead Non-Isolated Cable 78 Ohm TWCH-78-2 Coax in 60 Inch from Fairview Microwave has same day shipment for domestic and International orders. Our RF, microwave and millimeter wave products maintain a 99% availability and are part of the broadest selection in the industry.

Click the following link to obtain additional part information: [LSZH 1553 TRB 3-Lug Jack Bulkhead Non-Isolated to TRB 3-Lug Jack Bulkhead Non-Isolated Cable 78 Ohm TWCH-78-2 Coax in 60 Inch FM3MSA00587-60](#)

URL: <https://www.fairviewmicrowave.com/lshz-1553-trb-3-lug-jack-bulkhead-nonisolated-to-trb-3-lug-jack-bulkhead-nonisolated-cable-78-ohm-twch-78-2-coax-in-60-inch-fm3msa00587-60-p.aspx>

The information contained in this document is accurate to the best of our knowledge and representative of the part described herein. It may be necessary to make modifications to the part and/or the documentation of the part, in order to implement improvements. Fairview Microwave reserves the right to make such changes as required. Unless otherwise stated, all specifications are nominal. Fairview Microwave does not make any representation or warranty regarding the suitability of the part described herein for any particular purpose, and Fairview Microwave does not assume any liability arising out of the use of any part or documentation.



LEAD FREE SOLDER

REVISION		DATE	CHANGED BY	APPROVED
ZONE	REV	INITIAL RELEASE	KDANG	EKIM
	A			

NOTES:

- CABLE ASSY LENGTH LABEL PLACEMENT: 36 INCHES OR LESS, ONE LABEL APPROX CENTERED. LONGER THAN 36 INCHES, TWO LABELS APPROX 6 INCHES FROM EACH CONNECTOR.
- CABLE ASSEMBLY LENGTH DETERMINED BY ILLUSTRATED: FM3MSA00587-XX (-XX = OAL IN INCHES)
- CABLES ASSEMBLIES SHALL BE TESTED FOR CONTINUITY.

THE INFORMATION CONTAINED IN THIS DRAWING IS THE SOLE PROPERTY OF INFINITE ELECTRONICS, INC. ANY REPRODUCTION IN PART OR WHOLE WITHOUT THE WRITTEN PERMISSION OF INFINITE ELECTRONICS, INC. IS PROHIBITED. THESE COMMODITIES, TECHNOLOGY OR SOFTWARE WERE EXPORTED FROM THE UNITED STATES IN ACCORDANCE WITH THE EXPORT ADMINISTRATION REGULATIONS. DIVISION CONTRARY TO U.S. LAW PROHIBITED.

UNLESS OTHERWISE SPECIFIED, LEADING DIMENSIONS ARE IN INCHES. DIMENSIONS IN [] ARE MILLIMETERS	
TOLERANCES:	
.X = ±.2 [5]	FRACTIONS ± 1/32
.XX = ±.02 [0.5]	ANGLES ± 1°
.XXX = ±.005 [0.13]	
CABLE LENGTH TOLERANCES:	
< 12 [305]	±.1 [25] / -0
< 24 [609]	±.2 [5.08] / -0
< 36 [914]	±.3 [7.62] / -0
< 48 [1219]	±.4 [10.16] / -0
< 60 [1524]	±.5 [12.7] / -0
< 72 [1829]	±.6 [15.24] / -0
> 72 [1829]	±.8 [20.32] / -0
> 84 [2134]	±.9 [22.86] / -0
> 96 [2438]	±.1 [25.4] / -0
> 108 [2743]	±.15 [38.1] / -0
> 120 [3048]	±.2 [5.08] / -0
> 132 [3353]	±.3 [7.62] / -0
> 144 [3658]	±.4 [10.16] / -0
> 156 [3963]	±.5 [12.7] / -0
> 168 [4268]	±.6 [15.24] / -0
> 180 [4573]	±.8 [20.32] / -0
> 192 [4878]	±.9 [22.86] / -0
> 204 [5183]	±.1 [25.4] / -0
> 216 [5488]	±.15 [38.1] / -0
> 228 [5793]	±.2 [5.08] / -0
> 240 [6098]	±.3 [7.62] / -0
> 252 [6403]	±.4 [10.16] / -0
> 264 [6708]	±.5 [12.7] / -0
> 276 [7013]	±.6 [15.24] / -0
> 288 [7318]	±.8 [20.32] / -0
> 300 [7623]	±.9 [22.86] / -0
> 312 [7928]	±.1 [25.4] / -0
> 324 [8233]	±.15 [38.1] / -0
> 336 [8538]	±.2 [5.08] / -0
> 348 [8843]	±.3 [7.62] / -0
> 360 [9148]	±.4 [10.16] / -0
> 372 [9453]	±.5 [12.7] / -0
> 384 [9758]	±.6 [15.24] / -0
> 396 [10063]	±.8 [20.32] / -0
> 408 [10368]	±.9 [22.86] / -0
> 420 [10673]	±.1 [25.4] / -0
> 432 [10978]	±.15 [38.1] / -0
> 444 [11283]	±.2 [5.08] / -0
> 456 [11588]	±.3 [7.62] / -0
> 468 [11893]	±.4 [10.16] / -0
> 480 [12198]	±.5 [12.7] / -0
> 492 [12503]	±.6 [15.24] / -0
> 504 [12808]	±.8 [20.32] / -0
> 516 [13113]	±.9 [22.86] / -0
> 528 [13418]	±.1 [25.4] / -0
> 540 [13723]	±.15 [38.1] / -0
> 552 [14028]	±.2 [5.08] / -0
> 564 [14333]	±.3 [7.62] / -0
> 576 [14638]	±.4 [10.16] / -0
> 588 [14943]	±.5 [12.7] / -0
> 600 [15248]	±.6 [15.24] / -0
> 612 [15553]	±.8 [20.32] / -0
> 624 [15858]	±.9 [22.86] / -0
> 636 [16163]	±.1 [25.4] / -0
> 648 [16468]	±.15 [38.1] / -0
> 660 [16773]	±.2 [5.08] / -0
> 672 [17078]	±.3 [7.62] / -0
> 684 [17383]	±.4 [10.16] / -0
> 696 [17688]	±.5 [12.7] / -0
> 708 [17993]	±.6 [15.24] / -0
> 720 [18298]	±.8 [20.32] / -0
> 732 [18603]	±.9 [22.86] / -0
> 744 [18908]	±.1 [25.4] / -0
> 756 [19213]	±.15 [38.1] / -0
> 768 [19518]	±.2 [5.08] / -0
> 780 [19823]	±.3 [7.62] / -0
> 792 [20128]	±.4 [10.16] / -0
> 804 [20433]	±.5 [12.7] / -0
> 816 [20738]	±.6 [15.24] / -0
> 828 [21043]	±.8 [20.32] / -0
> 840 [21348]	±.9 [22.86] / -0
> 852 [21653]	±.1 [25.4] / -0
> 864 [21958]	±.15 [38.1] / -0
> 876 [22263]	±.2 [5.08] / -0
> 888 [22568]	±.3 [7.62] / -0
> 900 [22873]	±.4 [10.16] / -0
> 912 [23178]	±.5 [12.7] / -0
> 924 [23483]	±.6 [15.24] / -0
> 936 [23788]	±.8 [20.32] / -0
> 948 [24093]	±.9 [22.86] / -0
> 960 [24398]	±.1 [25.4] / -0
> 972 [24703]	±.15 [38.1] / -0
> 984 [25008]	±.2 [5.08] / -0
> 996 [25313]	±.3 [7.62] / -0
> 1008 [25618]	±.4 [10.16] / -0
> 1020 [25923]	±.5 [12.7] / -0
> 1032 [26228]	±.6 [15.24] / -0
> 1044 [26533]	±.8 [20.32] / -0
> 1056 [26838]	±.9 [22.86] / -0
> 1068 [27143]	±.1 [25.4] / -0
> 1080 [27448]	±.15 [38.1] / -0
> 1092 [27753]	±.2 [5.08] / -0
> 1104 [28058]	±.3 [7.62] / -0
> 1116 [28363]	±.4 [10.16] / -0
> 1128 [28668]	±.5 [12.7] / -0
> 1140 [28973]	±.6 [15.24] / -0
> 1152 [29278]	±.8 [20.32] / -0
> 1164 [29583]	±.9 [22.86] / -0
> 1176 [29888]	±.1 [25.4] / -0
> 1188 [30193]	±.15 [38.1] / -0
> 1200 [30498]	±.2 [5.08] / -0
> 1212 [30803]	±.3 [7.62] / -0
> 1224 [31108]	±.4 [10.16] / -0
> 1236 [31413]	±.5 [12.7] / -0
> 1248 [31718]	±.6 [15.24] / -0
> 1260 [32023]	±.8 [20.32] / -0
> 1272 [32328]	±.9 [22.86] / -0
> 1284 [32633]	±.1 [25.4] / -0
> 1296 [32938]	±.15 [38.1] / -0
> 1308 [33243]	±.2 [5.08] / -0
> 1320 [33548]	±.3 [7.62] / -0
> 1332 [33853]	±.4 [10.16] / -0
> 1344 [34158]	±.5 [12.7] / -0
> 1356 [34463]	±.6 [15.24] / -0
> 1368 [34768]	±.8 [20.32] / -0
> 1380 [35073]	±.9 [22.86] / -0
> 1392 [35378]	±.1 [25.4] / -0
> 1404 [35683]	±.15 [38.1] / -0
> 1416 [35988]	±.2 [5.08] / -0
> 1428 [36293]	±.3 [7.62] / -0
> 1440 [36598]	±.4 [10.16] / -0
> 1452 [36903]	±.5 [12.7] / -0
> 1464 [37208]	±.6 [15.24] / -0
> 1476 [37513]	±.8 [20.32] / -0
> 1488 [37818]	±.9 [22.86] / -0
> 1500 [38123]	±.1 [25.4] / -0
> 1512 [38428]	±.15 [38.1] / -0
> 1524 [38733]	±.2 [5.08] / -0
> 1536 [39038]	±.3 [7.62] / -0
> 1548 [39343]	±.4 [10.16] / -0
> 1560 [39648]	±.5 [12.7] / -0
> 1572 [39953]	±.6 [15.24] / -0
> 1584 [40258]	±.8 [20.32] / -0
> 1596 [40563]	±.9 [22.86] / -0
> 1608 [40868]	±.1 [25.4] / -0
> 1620 [41173]	±.15 [38.1] / -0
> 1632 [41478]	±.2 [5.08] / -0
> 1644 [41783]	±.3 [7.62] / -0
> 1656 [42088]	±.4 [10.16] / -0
> 1668 [42393]	±.5 [12.7] / -0
> 1680 [42698]	±.6 [15.24] / -0
> 1692 [43003]	±.8 [20.32] / -0
> 1704 [43308]	±.9 [22.86] / -0
> 1716 [43613]	±.1 [25.4] / -0
> 1728 [43918]	±.15 [38.1] / -0
> 1740 [44223]	±.2 [5.08] / -0
> 1752 [44528]	±.3 [7.62] / -0
> 1764 [44833]	±.4 [10.16] / -0
> 1776 [45138]	±.5 [12.7] / -0
> 1788 [45443]	±.6 [15.24] / -0
> 1800 [45748]	±.8 [20.32] / -0
> 1812 [46053]	±.9 [22.86] / -0
> 1824 [46358]	±.1 [25.4] / -0
> 1836 [46663]	±.15 [38.1] / -0
> 1848 [46968]	±.2 [5.08] / -0
> 1860 [47273]	±.3 [7.62] / -0
> 1872 [47578]	±.4 [10.16] / -0
> 1884 [47883]	±.5 [12.7] / -0
> 1896 [48188]	±.6 [15.24] / -0
> 1908 [48493]	±.8 [20.32] / -0
> 1920 [48798]	±.9 [22.86] / -0
> 1932 [49103]	±.1 [25.4] / -0
> 1944 [49408]	±.15 [38.1] / -0
> 1956 [49713]	±.2 [5.08] / -0
> 1968 [50018]	±.3 [7.62] / -0
> 1980 [50323]	±.4 [10.16] / -0
> 1992 [50628]	±.5 [12.7] / -0
> 2004 [50933]	±.6 [15.24] / -0
> 2016 [51238]	±.8 [20.32] / -0
> 2028 [51543]	±.9 [22.86] / -0
> 2040 [51848]	±.1 [25.4] / -0
> 2052 [52153]	±.15 [38.1] / -0
> 2064 [52458]	±.2 [5.08] / -0
> 2076 [52763]	±.3 [7.62] / -0
> 2088 [53068]	±.4 [10.16] / -0
> 2100 [53373]	±.5 [12.7] / -0
> 2112 [53678]	±.6 [15.24] / -0
> 2124 [53983]	±.8 [20.32] / -0
> 2136 [54288]	±.9 [22.86] / -0
> 2148 [54593]	±.1 [25.4] / -0
> 2160 [54898]	±.15 [38.1] / -0
> 2172 [55203]	±.2 [5.08] / -0
> 2184 [55508]	±.3 [7.62] / -0
> 2196 [55813]	±.4 [10.16] / -0
> 2208 [56118]	±.5 [12.7] / -0
> 2220 [56423]	±.6 [15.24] / -0
> 2232 [56728]	±.8 [20.32] / -0
> 2244 [57033]	±.9 [22.86] / -0
> 2256 [57338]	±.1 [25.4] / -0
> 2268 [57643]	±.15 [38.1] / -0
> 2280 [57948]	±.2 [5.08] / -0
> 2292 [58253]	±.3 [7.62] / -0
> 2304 [58558]	±.4 [10.16] / -0
> 2316 [58863]	±.5 [12.7] / -0
> 2328 [59168]	±.6 [15.24] / -0
> 2340 [59473]	±.8 [20.32] / -0
> 2352 [59778]	±.9 [22.86] / -0
> 2364 [60083]	±.1 [25.4] / -0
> 2376 [60388]	±.15 [38.1] / -0
> 2388 [60693]	±.2 [5.08] / -0
> 2400 [60998]	±.3 [7.62] / -0
> 2412 [61303]	±.4 [10.16] / -0
> 2424 [61608]	±.5 [12.7] / -0
> 2436 [61913]	±.6 [15.24] / -0
> 2448 [62218]	±.8 [20.32] / -0
> 2460 [62523]	±.9 [22.86] / -0
> 2472 [62828]	±.1 [25.4] / -0
> 2484 [63133]	±.15 [38.1] / -0
> 2496 [63438]	±.2 [5.08] / -0
> 2508 [63743]	±.3 [7.62] / -0
> 2520 [64048]	±.4 [10.16] / -0
> 2532 [64353]	±.5 [12.7] / -0
> 2544 [64658]	±.6 [15.24] / -0
> 2556 [64963]	±.8 [20.32] / -0
> 2568 [65268]	±.9 [22.86] / -0
> 2580 [65573]	±.1 [25.4] / -0
> 2592 [65878]	±.15 [38.1] / -0
> 2604 [66183]	±.2 [5.08] / -0
> 2616 [66488]	±.3 [7.62] / -0
> 2628 [66793]	±.4 [10.16] / -0
> 2640 [67098]	±.5 [12.7] / -0
> 2652 [67403]	±.6 [15.24] / -0
> 2664 [67708]	±.8 [20.32] / -0
> 2676 [68013]	±.9 [22.86] / -0
> 2688 [68318]	±.1 [25.4] / -0
> 2700 [68623]	±.15 [38.1] / -0
> 2712 [68928]	±.2 [5.08] / -0
> 2724 [69233]	±.3 [7.62] / -0
> 2736 [69538]	±.4 [10.16] / -0
> 2748 [69843]	±.5 [12.7] / -0
> 2760 [70148]	±.6 [15.24] / -0
> 2772 [70453]	±.8 [20.32] / -0
> 2784 [70758]	±.9 [22.86] / -0
> 2796 [71063]	±.1 [25.4] / -0
> 2808 [71368]	±.15 [38.1] / -0
> 2820 [71673]	±.2 [5.08] / -0
> 2832 [71978]	±.3 [7.62] / -0
> 2844 [72283]	±.4 [10.16] / -0
> 2856 [72588]	±.5 [12.7] / -0
> 2868 [72893]	±.6 [15.24] / -0
> 2880 [73198]	±.8 [20.32] / -0
> 2892 [73503]	±.9 [22.86] / -0
> 2904 [73808]	±.1 [25.4] / -0
> 2916 [74113]	±.15 [38.1] / -0
> 2928 [74418]	±.2 [5.08] / -0
> 2940 [74723]	±.3 [7.62] / -0
> 2952 [75028]	±.4 [10.16] / -0
> 2964 [75333]	±.5 [12.7] / -0
> 2976 [75638]	±.6 [15.24] / -0
> 2988 [75943]	±.8 [20.32] / -0
> 3000 [76248]	±.9 [22.86] / -0
> 3012 [76553]	±.1 [25.4] / -0
> 3024 [76858]	±.15 [38.1] / -0
> 3036 [77163]	±.2 [5.08] / -0
> 3048 [77468]	±.3 [7.62] / -0
> 306	