

WR-430 Standard Gain Horn with 20 dBi gain, N Female Connector, Integrated Cage-Style Mount

FM1WAN430-20NF

Features

- 1.7 GHz to 2.6 GHz
- WR-430 Waveguide Band
- 20 dBi Nominal Gain
- N Female Connector
- Ruggedized Aluminum Cage-Style Mount
- Integrates with Positioning Systems

Applications

- Antenna Measurements
- Wireless Communication
- Laboratory Use
- Microwave Radio Systems
- Radome Testing
- Automotive Antenna Test Solutions
- Radar Cross Section
- Satellite Antenna Testing

Description

The FM1WAN430-20NF standard gain horn antenna with integrated cage-style mount (also known as waveguide horn) from Fairview Microwave is part of our comprehensive selection of waveguide antennas. The cage-style mount is a ruggedized aluminum mounting solution that integrates with test and measurement positioning systems, ensuring precise alignment and protection of the antenna. This standard gain horn is mated with a WR-430 to N Female waveguide to coaxial adapter and operates from 1.7 GHz to 2.6 GHz.

Our FM1WAN430-20NF standard gain horn antenna with integrated cage-style mount has a nominal gain of 20 dBi with a Horizontal and Vertical HPBW (Half Power Beam Width) of 17.50 and 17.30 degrees respectively. Fairview Microwave's N Female to WR-430 standard gain horns are available in 10, 15 and 20 dBi models with pyramidal shape and connectorized input.

Waveguide antennas, such as the FM1WAN430-20NF are used in a wide variety of applications due to the high-power handling capability, low loss, high directivity, and near constant electrical performance. Our WR-430 waveguide antennas with N Female interface is part of over 40,000 RF, microwave and millimeter wave components from Fairview Microwave available worldwide and ship same day.

Configuration

Design	WR-430
Polarization	Linear
Coaxial Interface	N Female

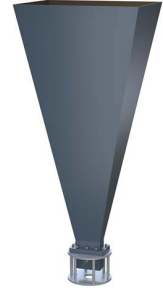
Electrical Specifications

Description	Minimum	Typical	Maximum	Units
Frequency Range	1.7		2.6	GHz
Gain		20		
Horizontal Half Power Beam Width		17.5		Degrees
Vertical Half Power Beam Width		17.3		Degrees
Waveguide to Coaxial Adapter				
VSWR		1.3:1		
Input Power (Peak)			500	Watts

Mechanical Specifications

Size	
Length	54.878 in [139.39 cm]
Width	21.027 in [534.09 mm]

WR-430 Standard Gain Horn with 20 dBi gain, N Female Connector, Integrated Cage-Style Mount



FM1WAN430-20NF

Height 15.6 in [396.24 mm]
Weight 2.0752 lbs [941.29 g]

RF Connector
Type N Female
Body Material and Plating Stainless Steel

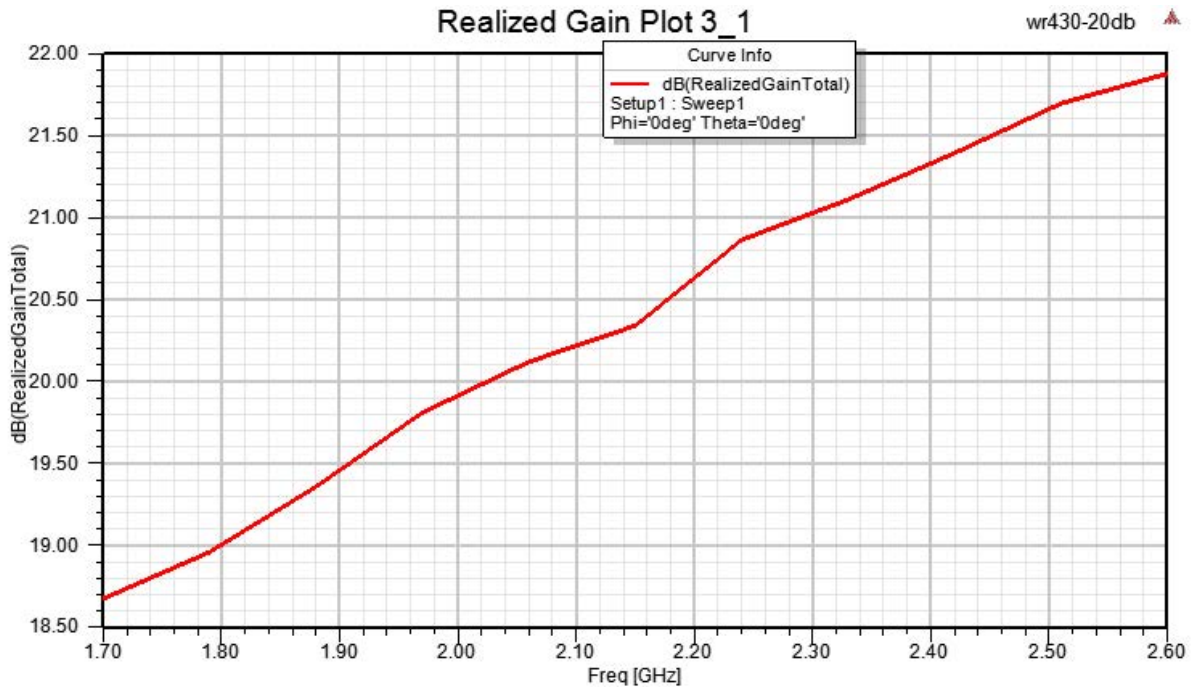
Waveguide Interface
Waveguide Size WR-430
Flange Type Square Cover
Flange Designation None
Body Material and Plating Aluminum

Compliance Certifications (see [product page](#) for current document)

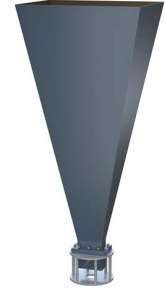
Plotted and Other Data

Notes:

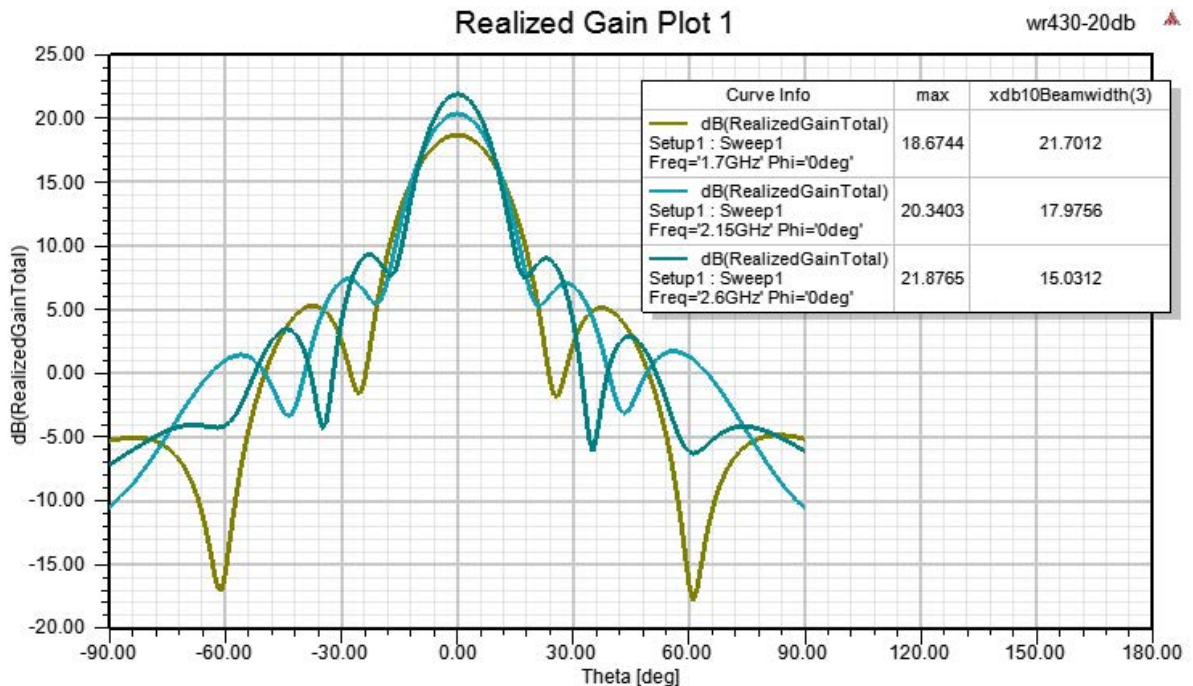
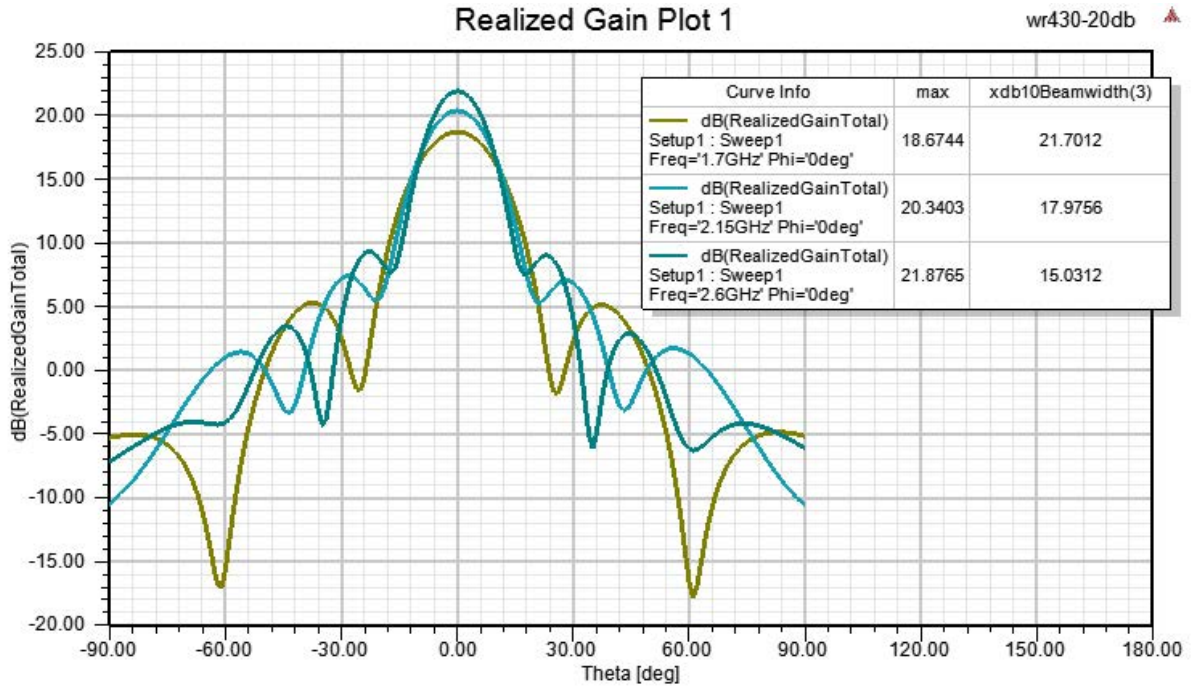
Typical Performance Data



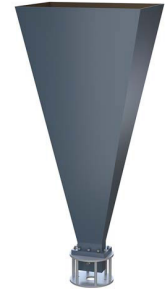
WR-430 Standard Gain Horn with 20 dBi gain, N Female Connector, Integrated Cage-Style Mount



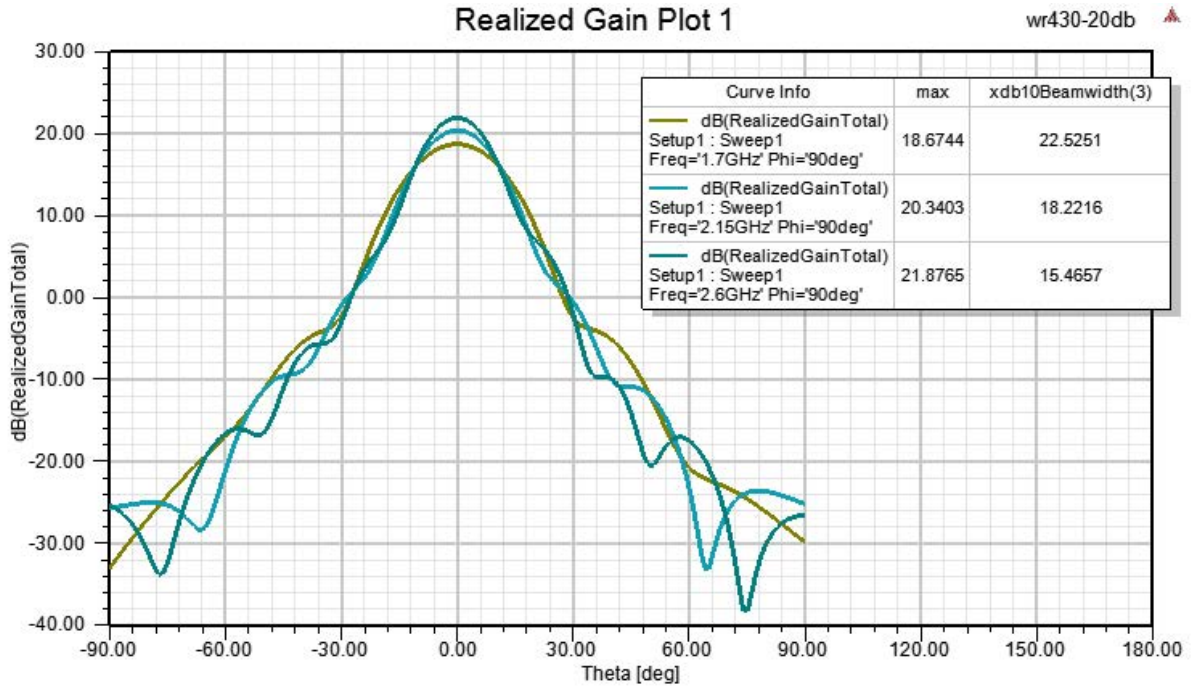
FM1WAN430-20NF



WR-430 Standard Gain Horn with 20 dBi gain, N Female Connector, Integrated Cage-Style Mount



FM1WAN430-20NF



WR-430 Standard Gain Horn with 20 dBi gain, N Female Connector, Integrated Cage-Style Mount from Fairview Microwave is in-stock and available to ship same-day. All of our RF/microwave products are available off-the-shelf from our ISO 9001:2008 certified facilities in Lewisville, Texas. Fairview Microwave is RF on-demand.

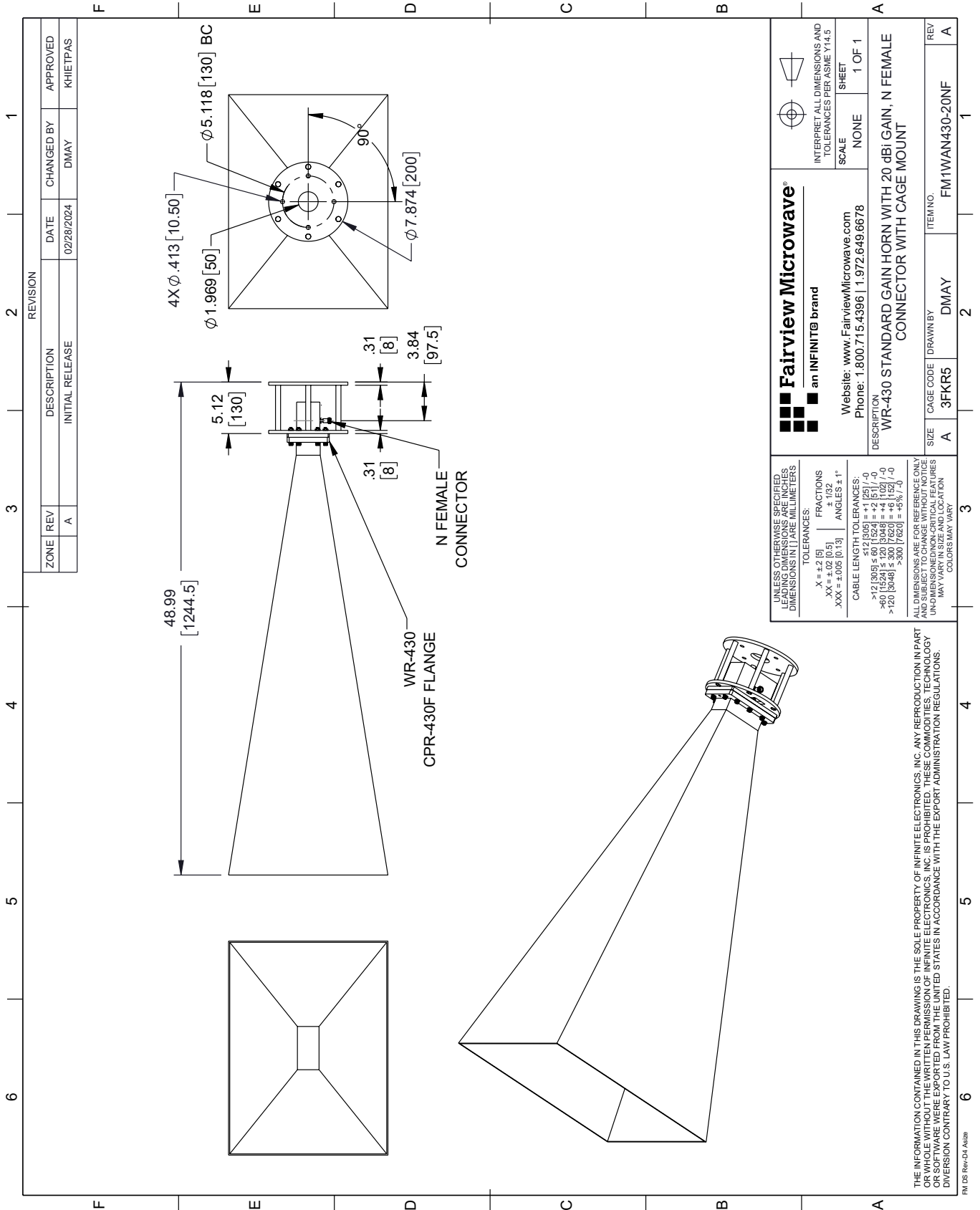
For additional information on this product, please click the following link: [WR-430 Standard Gain Horn with 20 dBi gain, N Female Connector, Integrated Cage-Style Mount FM1WAN430-20NF](https://www.fairviewmicrowave.com/wr-430-standard-gain-horn-15-db-n-fm1wan430-20nf-p.aspx)

URL: <https://www.fairviewmicrowave.com/wr-430-standard-gain-horn-15-db-n-fm1wan430-20nf-p.aspx>

The information contained within this document is accurate to the best of our knowledge and representative of the part described herein. It may be necessary to make modifications to the part and/or the documentation of the part in order to impliment improvements. Fairview Microwave reserves the right to make such changes as required. Unless otherwise stated, all specifications are nominal. Fairview Microwave does not make any representation or warranty regarding the suitability of the part described herein for any particular purpose, and Fairview Microwave does not assume liability arising out of the use of any part or document.

FM1WAN430-20NF CAD Drawing

WR-430 Standard Gain Horn with 20 dBi gain, N Female Connector, Integrated Cage-Style Mount



REVISION		DATE	CHANGED BY	APPROVED	
ZONE	REV	DESCRIPTION	DATE	CHANGED BY	APPROVED
	A	INITIAL RELEASE	02/28/2024	DMAY	KHETTPAS

Fairview Microwave
an INFINITI® brand

Website: www.FairviewMicrowave.com
Phone: 1.800.715.4396 | 1.972.649.6678

UNLESS OTHERWISE SPECIFIED, LEADING DIMENSIONS ARE IN INCHES. DIMENSIONS IN [] ARE MILLIMETERS.

TOLERANCES:
 .X = ±.2 [5] FRACTIONS ± 1/32
 .XX = ±.02 [0.5] ANGLES ± 1°
 .XXX = ±.005 [0.13]

CABLE LENGTH TOLERANCES:
 >12 [305] ≤ 60 [1524] = ±.1 [25] / -0
 >60 [1524] ≤ 120 [3048] = ±.4 [102] / -0
 >120 [3048] ≤ 300 [7620] = ±.6 [15] / -0

ALL DIMENSIONS ARE FOR REFERENCE ONLY. UNLESS OTHERWISE SPECIFIED, DIMENSIONS MAY VARY IN SIZE AND LOCATION. COLORS MAY VARY.

INTERPRET ALL DIMENSIONS AND TOLERANCES PER ASME Y14.5

SCALE: NONE
SHEET: 1 OF 1

DESCRIPTION: WR-430 STANDARD GAIN HORN WITH 20 dBi GAIN, N FEMALE CONNECTOR WITH CAGE MOUNT

SIZE: A CAGE CODE: 3FKR5 DRAWN BY: DMAY ITEM NO.: FM1WAN430-20NF REV: A

THE INFORMATION CONTAINED IN THIS DRAWING IS THE SOLE PROPERTY OF INFINITE ELECTRONICS, INC. ANY REPRODUCTION IN PART OR WHOLE WITHOUT THE WRITTEN PERMISSION OF INFINITE ELECTRONICS, INC. IS PROHIBITED. THESE COMMODITIES, TECHNOLOGY OR SOFTWARE ARE EXPORTED FROM THE UNITED STATES IN ACCORDANCE WITH THE EXPORT ADMINISTRATION REGULATIONS. DIVISION CONTRARY TO U.S. LAW PROHIBITED.

FM DS Rev-D4 Alt2b