

WR-430 Standard Gain Horn with 10 dBi gain, SMA Female Connector, Integrated Cage-Style Mount

FM1WAN430-10SF



Features

- 1.7 GHz to 2.6 GHz
- WR-430 Waveguide Band
- 10 dBi Nominal Gain
- SMA Female Connector
- Ruggedized Aluminum Cage-Style Mount
- Integrates with Positioning Systems

Applications

- Antenna Measurements
- Wireless Communication
- Laboratory Use
- Microwave Radio Systems
- Radome Testing
- Automotive Antenna Test Solutions
- Radar Cross Section
- Satellite Antenna Testing

Description

The FM1WAN430-10SF standard gain horn antenna with integrated cage-style mount (also known as waveguide horn) from Fairview Microwave is part of our comprehensive selection of waveguide antennas. The cage-style mount is a ruggedized aluminum mounting solution that integrates with test and measurement positioning systems, ensuring precise alignment and protection of the antenna. This standard gain horn is mated with a WR-430 to SMA Female waveguide to coaxial adapter and operates from 1.7 GHz to 2.6 GHz.

Our FM1WAN430-10SF standard gain horn antenna with integrated cage-style mount has a nominal gain of 10 dBi with a Horizontal and Vertical HPBW (Half Power Beam Width) of 52.10 and 51.60 degrees respectively. Fairview Microwave's SMA Female to WR-430 standard gain horns are available in 10, 15 and 20 dBi models with pyramidal shape and connectorized input.

Waveguide antennas, such as the FM1WAN430-10SF are used in a wide variety of applications due to the high-power handling capability, low loss, high directivity, and near constant electrical performance. Our WR-430 waveguide antennas with SMA Female interface is part of over 40,000 RF, microwave and millimeter wave components from Fairview Microwave available worldwide and ship same day.

Configuration

Design	WR-430
Polarization	Linear
Coaxial Interface	SMA Female

Electrical Specifications

Description	Minimum	Typical	Maximum	Units
Frequency Range	1.7		2.6	GHz
Gain		10		
Horizontal Half Power Beam Width		52.1		Degrees
Vertical Half Power Beam Width		51.6		Degrees
Waveguide to Coaxial Adapter				
VSWR		1.3:1		
Input Power (Peak)			150	Watts

Mechanical Specifications

Size	
Length	15.748 in [400 mm]
Width	7.874 in [200 mm]

WR-430 Standard Gain Horn with 10 dBi gain, SMA Female Connector, Integrated Cage-Style Mount

FM1WAN430-10SF



Height	5.246 in [133.25 mm]
Weight	3.475 lbs [1.58 kg]

RF Connector

Type	SMA Female
Body Material and Plating	Stainless Steel

Waveguide Interface

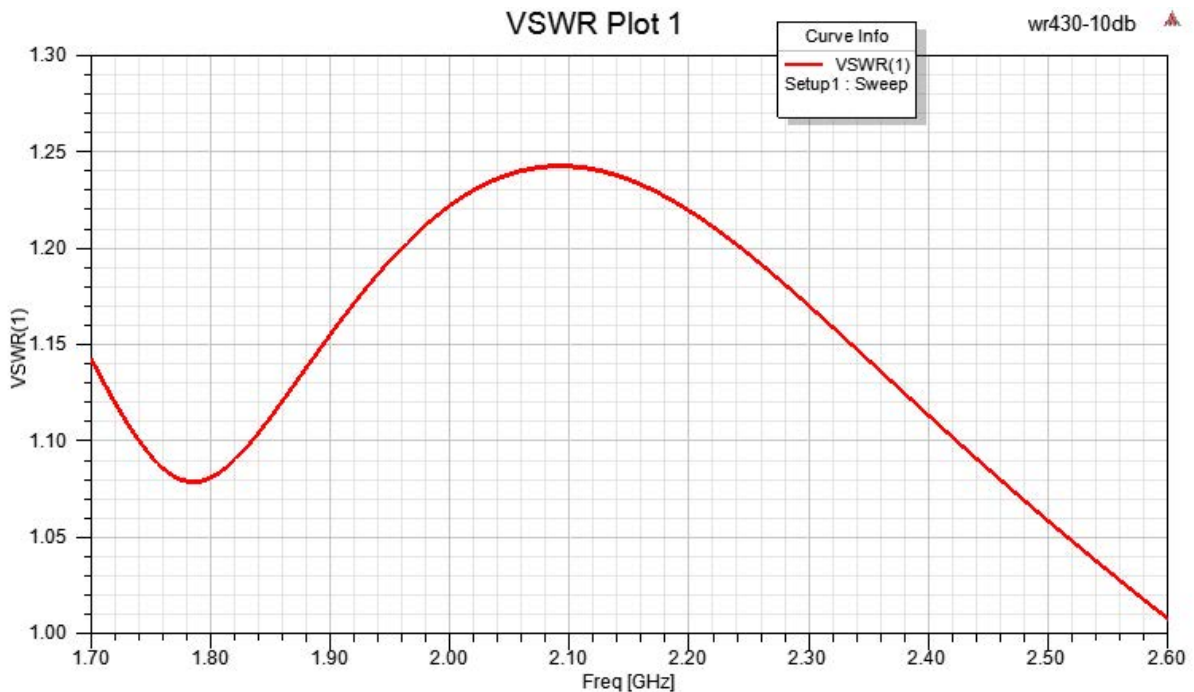
Waveguide Size	WR-430
Flange Type	Square Cover
Flange Designation	None
Body Material and Plating	Aluminum

Compliance Certifications (see [product page](#) for current document)

Plotted and Other Data

Notes:

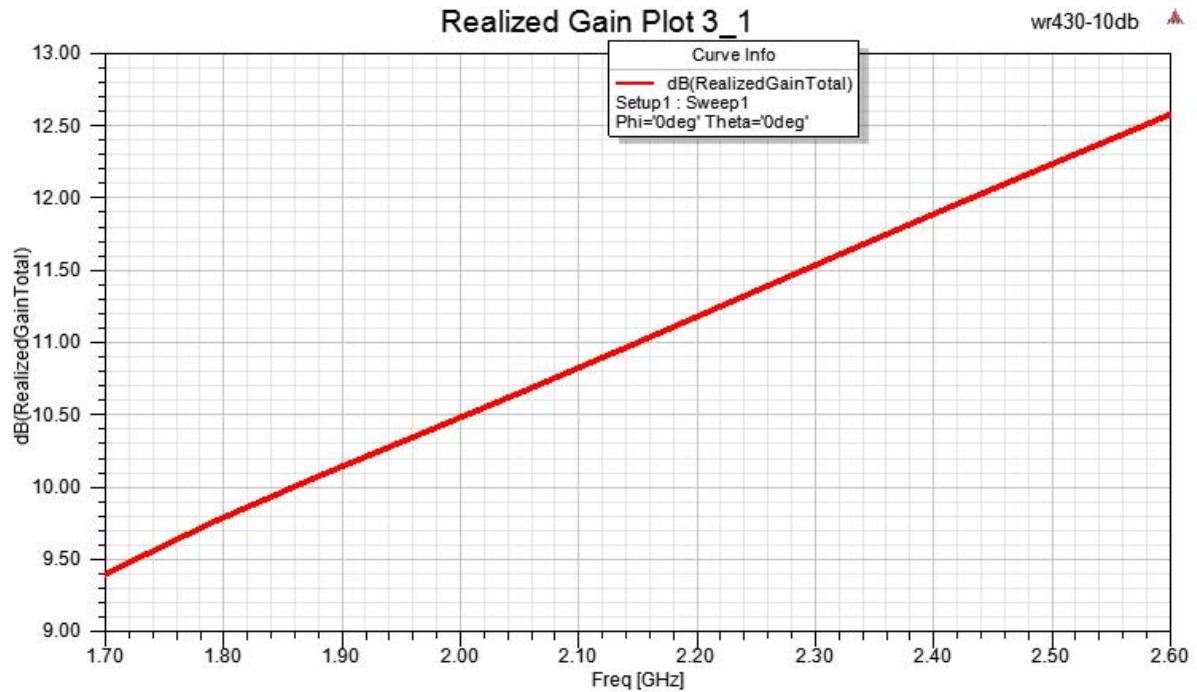
Typical Performance Data



WR-430 Standard Gain Horn with 10 dBi gain, SMA
Female Connector, Integrated Cage-Style Mount

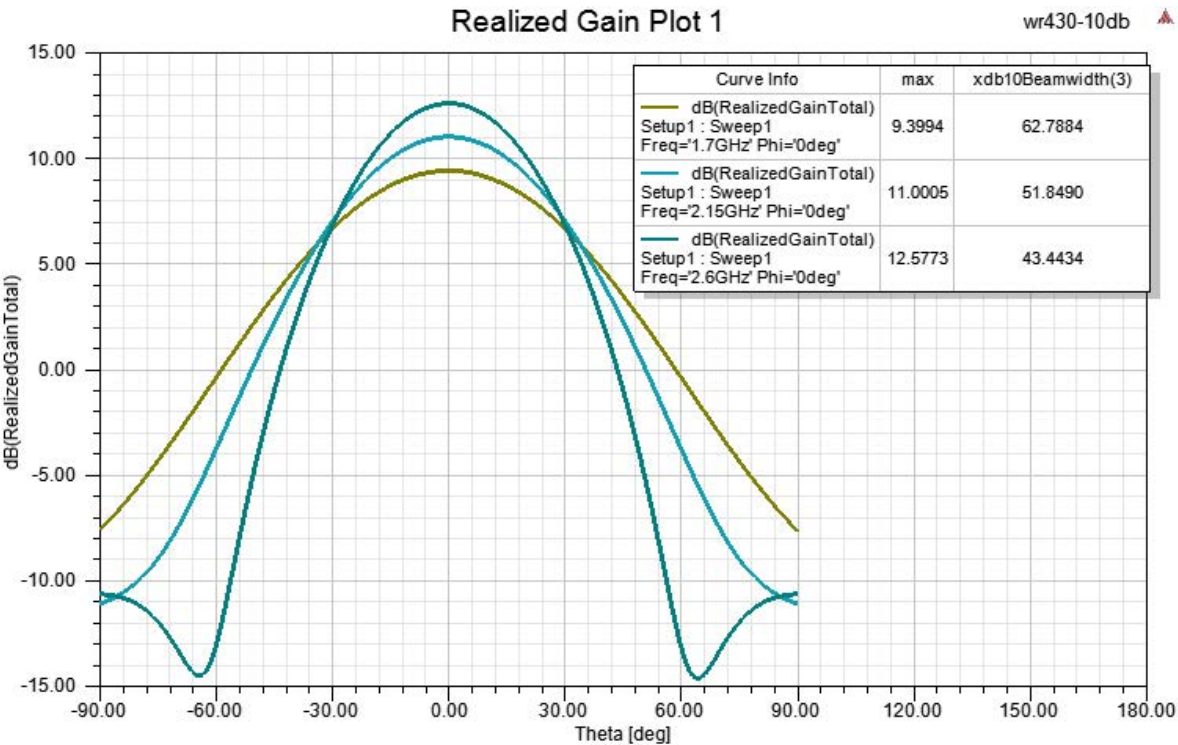
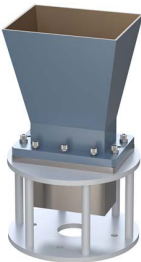


FM1WAN430-10SF



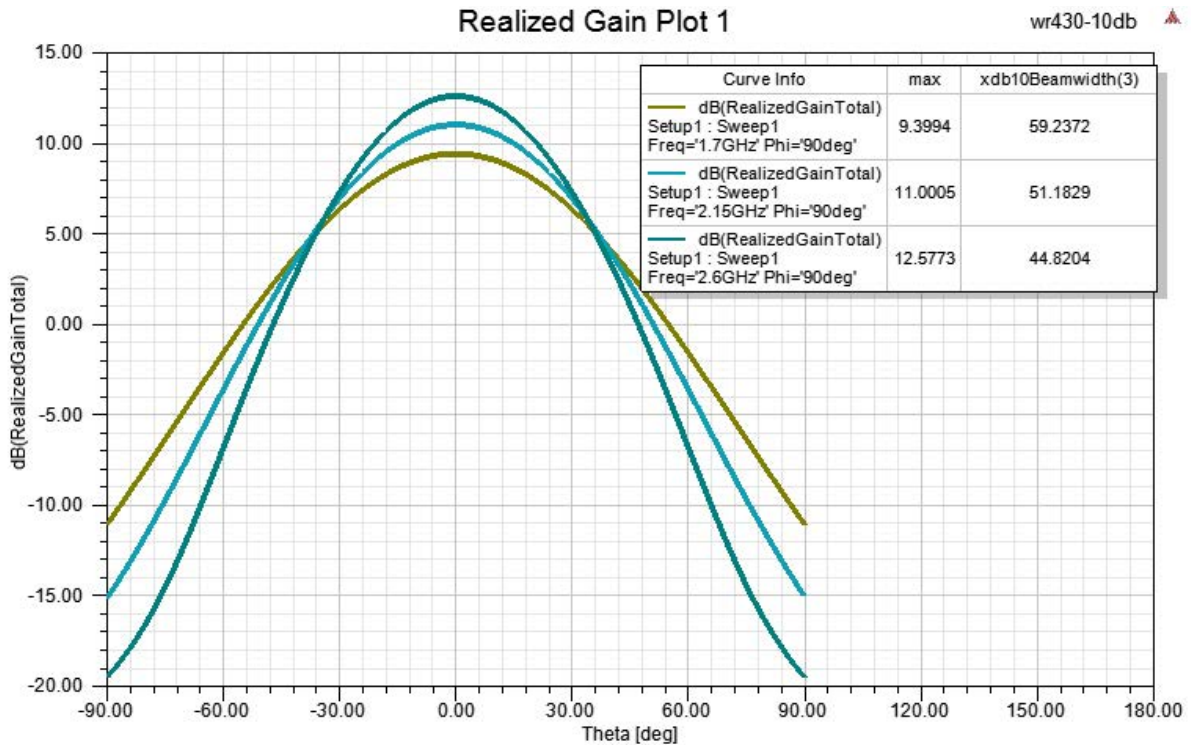
WR-430 Standard Gain Horn with 10 dBi gain, SMA
Female Connector, Integrated Cage-Style Mount

FM1WAN430-10SF



WR-430 Standard Gain Horn with 10 dBi gain, SMA
Female Connector, Integrated Cage-Style Mount

FM1WAN430-10SF



WR-430 Standard Gain Horn with 10 dBi gain, SMA Female Connector, Integrated Cage-Style Mount from Fairview Microwave is in-stock and available to ship same-day. All of our RF/microwave products are available off-the-shelf from our ISO 9001:2008 certified facilities in Lewisville, Texas. Fairview Microwave is RF on-demand.

For additional information on this product, please click the following link: [WR-430 Standard Gain Horn with 10 dBi gain, SMA Female Connector, Integrated Cage-Style Mount FM1WAN430-10SF](#)

URL: <https://www.fairviewmicrowave.com/wr-430-standard-gain-horn-10-db-sma-fm1wan430-10sf-p.aspx>

The information contained within this document is accurate to the best of our knowledge and representative of the part described herein. It may be necessary to make modifications to the part and/or the documentation of the part in order to impliment improvements. Fairview Microwave reserves the right to make such changes as required. Unless otherwise stated, all specifications are nominal. Fairview Microwave does not make any representation or warranty regarding the suitability of the part described herein for any particular purpose, and Fairview Microwave does not assume liability arising out of the use of any part or document.

FM1WAN430-10SF CAD Drawing

WR-430 Standard Gain Horn with 10 dBi gain, SMA Female Connector, Integrated Cage-Style Mount

