

## WR-112 Standard Gain Horn with 20 dBi gain, End Launch N Female Connector, Integrated Cage-Style Mount

### FM1WAN112-20ELNF



#### Features

- 7.05 GHz to 10 GHz
- WR-112 Waveguide Band
- 20 dBi Nominal Gain
- N Female End Launch Connector
- Ruggedized Aluminum Cage-Style Mount

#### Applications

- Antenna Measurements
- Wireless Communication
- Laboratory Use
- Microwave Radio Systems
- Radome Testing
- Automotive Antenna Test Solutions
- Radar Cross Section
- Satellite Antenna Testing

#### Description

The FM1WAN112-20ELNF standard gain horn antenna (also known as waveguide horn) from Fairview Microwave is part of our comprehensive selection of waveguide antennas. The cage-style mount is a ruggedized aluminum mounting solution that integrates with test and measurement positioning systems, ensuring precise alignment and protection of the antenna. This standard gain horn is mated with a WR-112 to N Female End Launch waveguide to coaxial adapter and operates from 7.05 GHz to 10 GHz.

Our FM1WAN112-20ELNF standard gain horn antenna with integrated cage-style mount has a nominal gain of 20 dBi with a Horizontal and Vertical HPBW (Half Power Beam Width) of 17.5 dB and 17.3 dB respectively. Fairview Microwave's N Female End Launch to WR-112 standard gain horns are available in 10, 15 and 20 dBi models with pyramidal shape and connectorized input.

Waveguide antennas, such as the FM1WAN112-20ELNF are used in a wide variety of applications due to the high-power handling capability, low loss, high directivity, and near constant electrical performance. Our WR-112 waveguide antennas with N Female End Launch interface is part of over 40,000 RF, microwave and millimeter wave components from Fairview Microwave available worldwide and ship same day.

#### Configuration

Design	WR-112
Coaxial Interface	N Female

#### Electrical Specifications

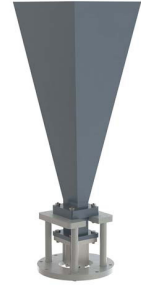
Description	Minimum	Typical	Maximum	Units
Frequency Range	7.05		10	GHz
Gain		20		
Horizontal Half Power Beam Width		17.5		Degrees
Vertical Half Power Beam Width		17.3		Degrees
<b>Waveguide to Coaxial Adapter</b>				
VSWR			1.3:1	

#### Mechanical Specifications

<b>Size</b>	
Length	9.43 in [239.52 mm]
Width	4.33 in [109.98 mm]
Height	10.44 in [265.18 mm]
Weight	2.0585 lbs [933.72 g]

WR-112 Standard Gain Horn with 20 dBi gain, End Launch  
N Female Connector, Integrated Cage-Style Mount

## FM1WAN112-20ELNF



### RF Connector

Type	N Female
Specification	End Launch

### Waveguide Interface

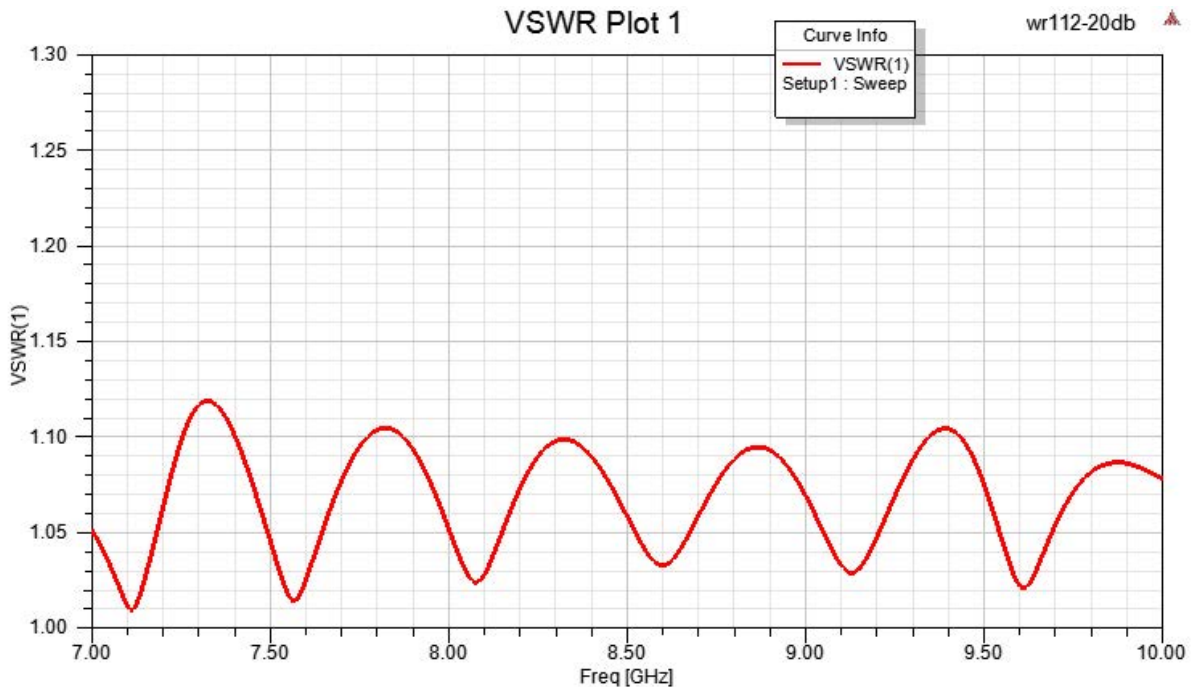
Waveguide Size	WR-112
----------------	--------

**Compliance Certifications** (see [product page](#) for current document)

### Plotted and Other Data

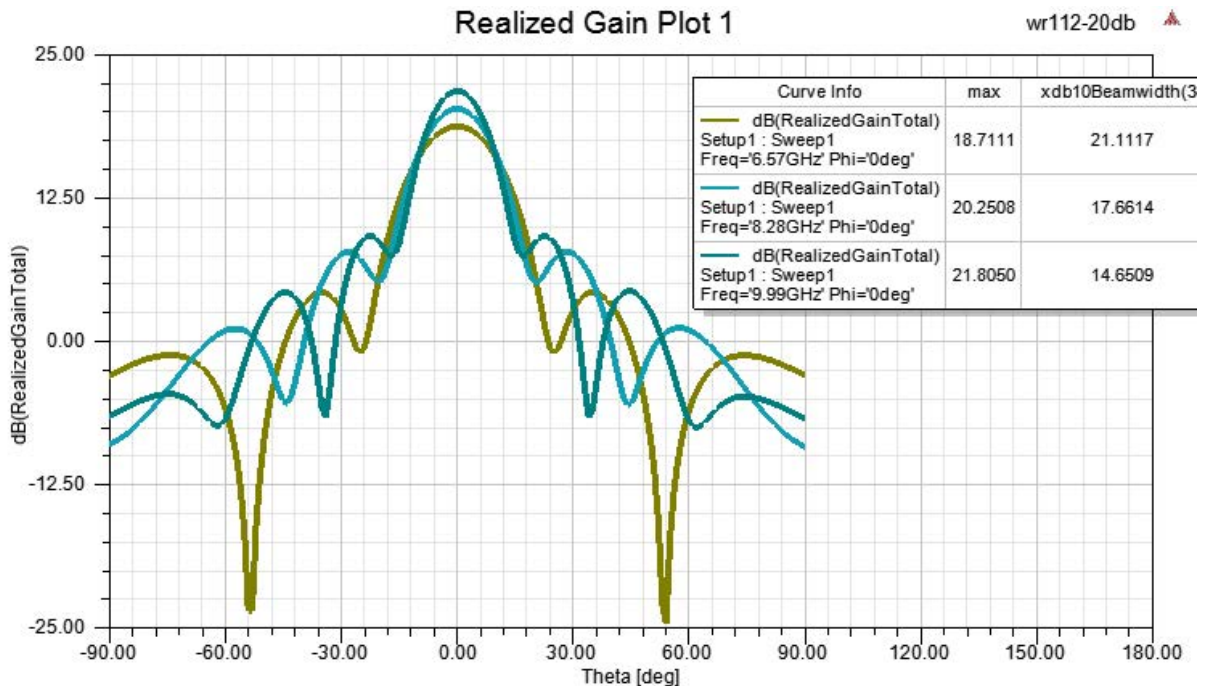
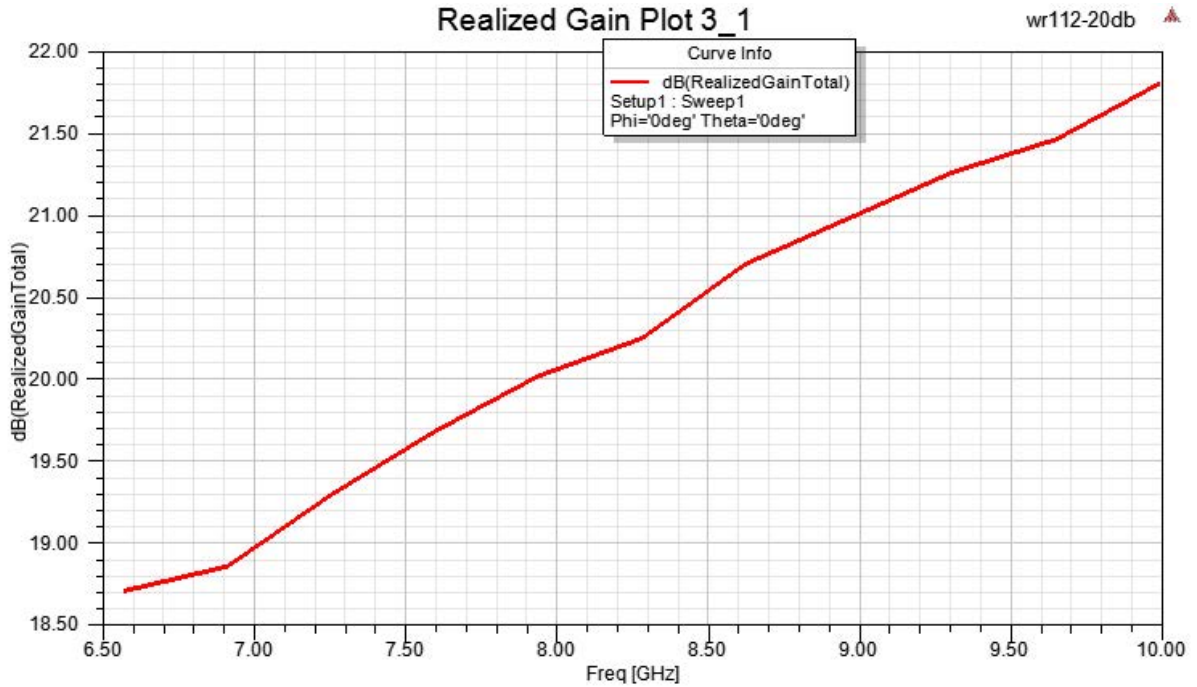
Notes:

### Typical Performance Data



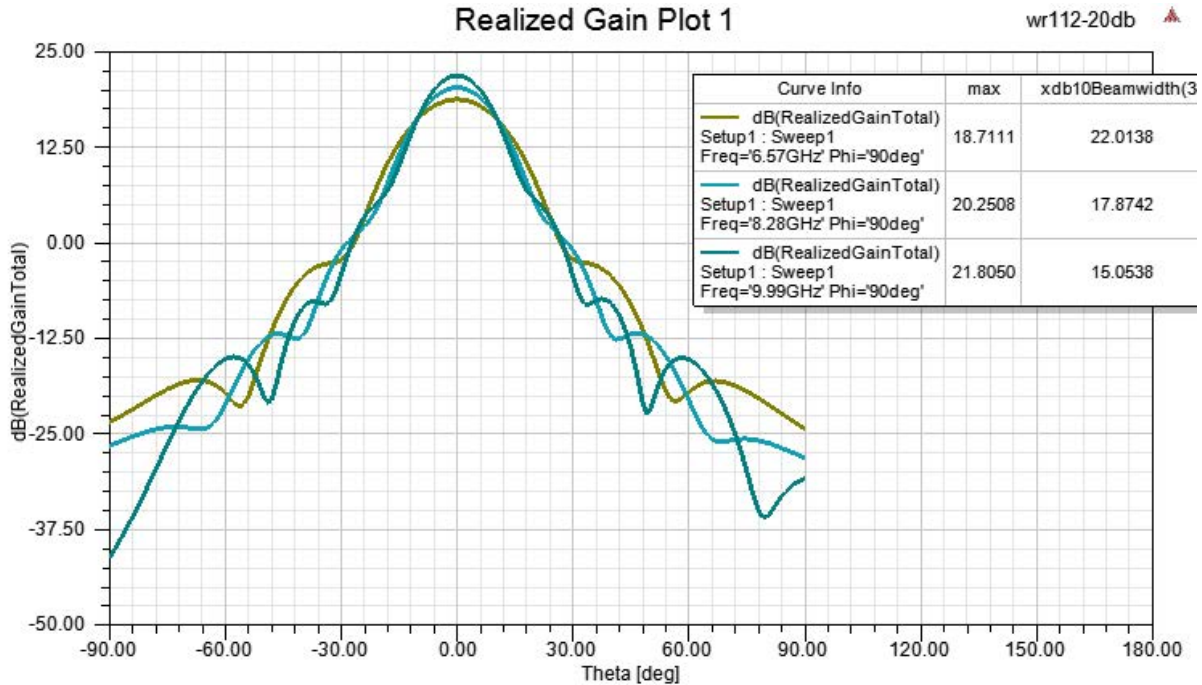
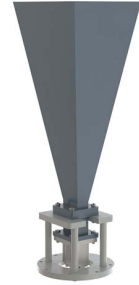
WR-112 Standard Gain Horn with 20 dBi gain, End Launch  
N Female Connector, Integrated Cage-Style Mount

**FM1WAN112-20ELNF**



WR-112 Standard Gain Horn with 20 dBi gain, End Launch  
N Female Connector, Integrated Cage-Style Mount

**FM1WAN112-20ELNF**



WR-112 Standard Gain Horn with 20 dBi gain, End Launch N Female Connector, Integrated Cage-Style Mount from Fairview Microwave is in-stock and available to ship same-day. All of our RF/microwave products are available off-the-shelf from our ISO 9001:2008 certified facilities in Lewisville, Texas. Fairview Microwave is RF on-demand.

For additional information on this product, please click the following link: [WR-112 Standard Gain Horn with 20 dBi gain, End Launch N Female Connector, Integrated Cage-Style Mount FM1WAN112-20ELNF](#)

URL: <https://www.fairviewmicrowave.com/wr-112-standard-gain-horn-20-dbi-n-fm1wan112-20elnf-p.aspx>

The information contained within this document is accurate to the best of our knowledge and representative of the part described herein. It may be necessary to make modifications to the part and/or the documentation of the part in order to implement improvements. Fairview Microwave reserves the right to make such changes as required. Unless otherwise stated, all specifications are nominal. Fairview Microwave does not make any representation or warranty regarding the suitability of the part described herein for any particular purpose, and Fairview Microwave does not assume liability arising out of the use of any part or document.

FM1WAN112-20ELNF CAD Drawing

WR-112 Standard Gain Horn with 20 dBi gain, End Launch N Female Connector, Integrated Cage-Style Mount

