

# QMA FEMALE

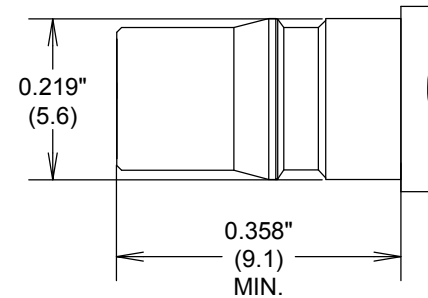
## SPECIFICATIONS

### ELECTRICAL

FREQUENCY: DC-18 GHZ  
IMPEDANCE: 50 OHMS  
VRMS: 500 V SEA LEVEL

### MECHANICAL

MATERIALS BODY: NICKEL PLATED BRASS  
MALE CONTACTS: BRASS  
FEMALE CONTACTS: BeCu  
GASKETS: SILICONE RUBBER  
INSULATOR: TEFLON



**FAIRVIEW MICROWAVE INC.**

ALLEN, TX 75013 [WWW.FAIRVIEWMICROWAVE.COM](http://WWW.FAIRVIEWMICROWAVE.COM)

TITLE

**QMA FEMALE**

SIZE	CAGE CODE	DWG NO	REV
<b>A</b>	<b>3FKR5</b>	<b>QMA FEMALE CONNECTOR</b>	<b>--</b>
SCALE		SHEET	

ALL DIMENSIONS IN inches(mm) Typical