

LENGTH MEASURED FROM
REF. PLANE TO FLANGE

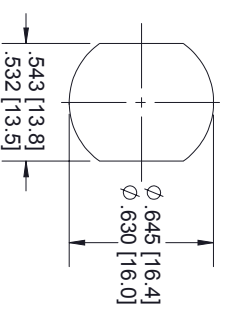
.930 [23.62]
MAX PANEL
.250 [6.35]

RP
5/16 FLATS
J1
FMCN1080
SMA FEMALE

2
FAIRVIEWMICROWAVE FMHR0142-XXX
SN XXXX
LL142

3
J2
CAGE 53919

FMCN1079
N FEMALE
BULKHEAD
3/4 HEX



MOUNTING HOLE

STANDARD TOLERANCES
.X ±0.2
.XX ±0.01
.XXX ±0.005

- NOTES:
1. ALL BLACK HEAT SHRINK WITH WHITE MARKINGS.
 2. TOP LAYER: SUMMITUBE W3B2 (4X) - SIZE 12/3.
BOTTOM LAYER: M23053/4-303-0
 3. TOP LAYER: SUMMITUBE W3B2 (4X) - SIZE 24/6.
BOTTOM LAYER: M23053/4-304-0

*STANDARD TOLERANCES APPLY
ONLY TO DIMENSIONS IN INCHES

Fairview Microwave
RF COMPONENTS ON DEMAND. *Done!*

NOTES:
1. UNLESS OTHERWISE SPECIFIED ALL DIMENSIONS ARE NOMINAL.
2. ALL SPECIFICATIONS ARE SUBJECT TO CHANGE WITHOUT NOTICE AT ANY TIME.
3. DIMENSIONS ARE IN INCHES [mm].

TITLE		DWG NO		CAGE CODE	
		FMHR0142		3FKR5	
CAD FILE	02/14/19	SHEET	1 OF 1	SCALE	N/A
				SIZE	A
					CN2379