

6

5

4

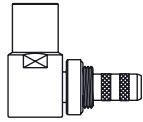
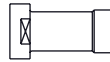
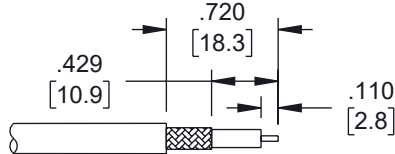
3

2

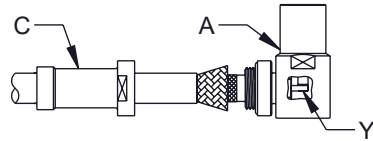
1

ASSEMBLY INSTRUCTIONS

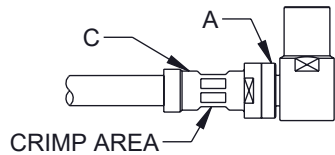
REVISION					
ZONE	REV	DESCRIPTION	DATE	CHANGED BY	APPROVED
	A	INITIAL RELEASE	05/21/2025	KGLEBOVA	AGANWANI

A
BODYB
COVER
+GASKETC
FERRULE
+GASKET

1. STRIP CABLE AS SHOWN.



2. SLIDE FERRULE "C" OVER CABLE.
3. WRAP BRAIDING UPWARD.
4. SLIDE CENTER CONDUCTOR ON CONTACT PIN OF CONNECTOR "A" AND SOLDER IN "Y".



CRIMP AREA

* CRIMP FERRULE "C" CLOSE TO CONNECTOR BODY:

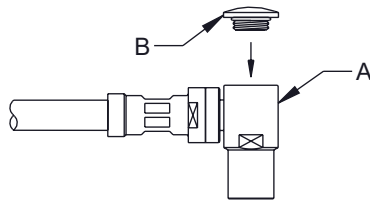


OK



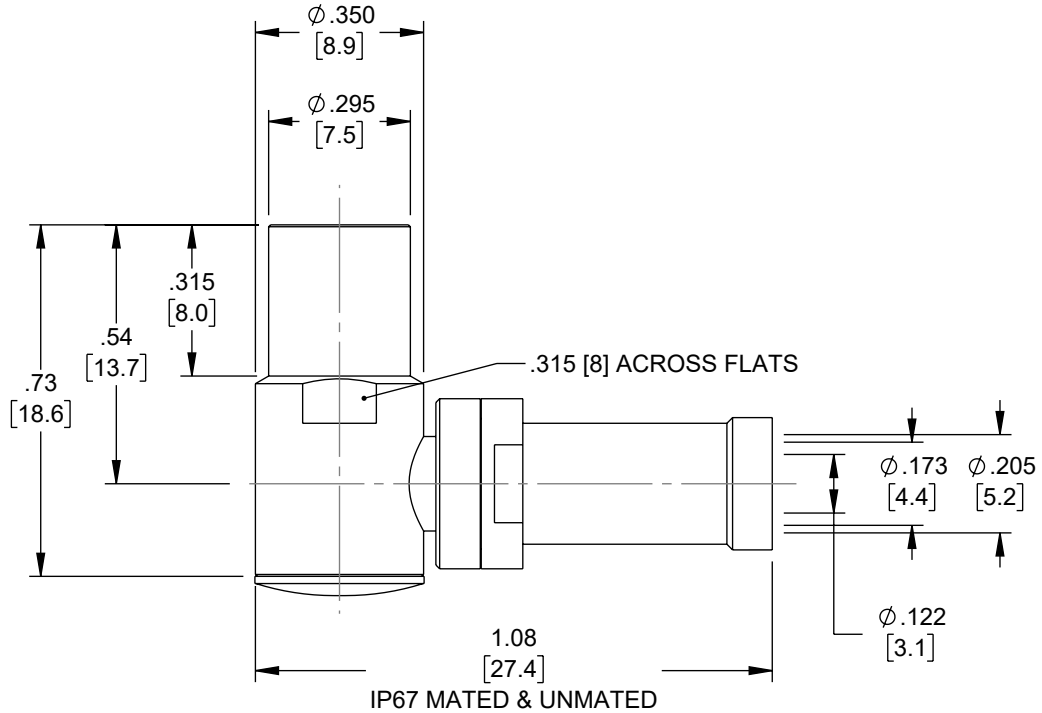
NG

5. SCREW FERRULE "C" ON CONNECTOR "A" AND CRIMP.



6. SCREW COVER "B" ON CONNECTOR BODY "A".

THE INFORMATION CONTAINED IN THIS DRAWING IS THE SOLE PROPERTY OF INFINITE ELECTRONICS, INC. ANY REPRODUCTION IN PART OR WHOLE WITHOUT THE WRITTEN PERMISSION OF INFINITE ELECTRONICS, INC. IS PROHIBITED. THESE COMMODITIES, TECHNOLOGY OR SOFTWARE WERE EXPORTED FROM THE UNITED STATES IN ACCORDANCE WITH THE EXPORT ADMINISTRATION REGULATIONS. DIVERSION CONTRARY TO U.S. LAW PROHIBITED.



IP67 MATED & UNMATED

CRIMP SIZE REQUIRED:

- CONTACT: SOLDER.
- FERRULE: .217 [5.5] HEX CRIMP TOOL.

UNLESS OTHERWISE SPECIFIED
LEADING DIMENSIONS ARE INCHES
DIMENSIONS IN [] ARE MILLIMETERS

TOLERANCES:
X = ±.2 [5] FRACTIONS
XX = ±.02 [0.5] ± 1/32
XXX = ±.005 [0.13] ANGLES ± 1°

CABLE LENGTH TOLERANCES:
≤12 [305] = +1 [25] / -0
>12 [305] ≤60 [1524] = +2 [51] / -0
>60 [1524] ≤120 [3048] = +4 [102] / -0
>120 [3048] ≤300 [7620] = +6 [152] / -0
>300 [7620] = +5% / -0

ALL DIMENSIONS ARE FOR REFERENCE ONLY
AND SUBJECT TO CHANGE WITHOUT NOTICE
UN-DIMENSIONED/NON-CRITICAL FEATURES
MAY VARY IN SIZE AND LOCATION
COLORS MAY VARY



Website: www.FairviewMicrowave.com
Phone: 1.800.715.4396 | 1.972.649.6678

DESCRIPTION
SMB PLUG RIGHT ANGLE CONNECTOR CRIMP ATTACHMENT,
IP67 FOR RG58CU, LMR-195, LMR-195-FR, RG303HV, TCOM-195,
0.195inch, IP67 MATED & UNMATED

SIZE	CAGE CODE	DRAWN BY	ITEM NO.	REV
A	3FKR5	KGLEBOVA	FMCN5448	A

INTERPRET ALL DIMENSIONS AND
TOLERANCES PER ASME Y14.5

SCALE
NONE

SHEET
1 OF 1

6

5

4

3

2

1