

6

5

4

3

2

1

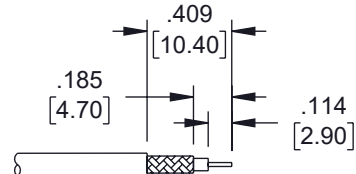
ASSEMBLY INSTRUCTIONS



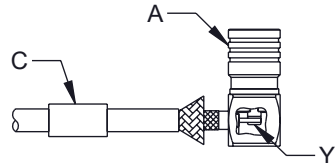
A

B

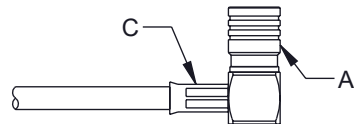
C



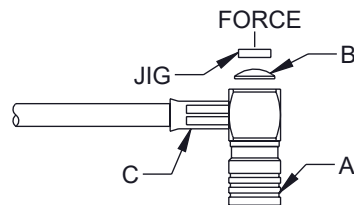
1. STRIP CABLE AS SHOWN.



2. SLIDE FERRULE "C" OVER CABLE.
3. WRAP BRAIDING UPWARDS.
4. SLIDE CENTER CONDUCTOR ON CONTACT PIN OF CONNECTOR "A" AND SOLDER IN "Y".



5. SLIDE FERRULE "C" TOWARDS CONNECTOR "A" AND CRIMP.

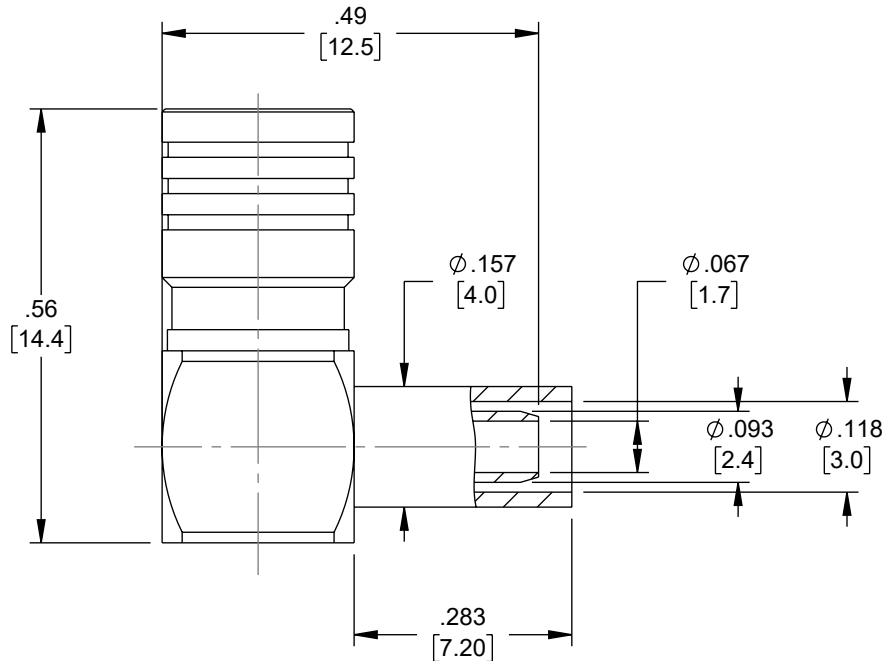


6. PRESS ON TOP OF COVER "B" WITH JIGS.

THE INFORMATION CONTAINED IN THIS DRAWING IS THE SOLE PROPERTY OF INFINITE ELECTRONICS, INC. ANY REPRODUCTION IN PART OR WHOLE WITHOUT THE WRITTEN PERMISSION OF INFINITE ELECTRONICS, INC. IS PROHIBITED. THESE COMMODITIES, TECHNOLOGY OR SOFTWARE WERE EXPORTED FROM THE UNITED STATES IN ACCORDANCE WITH THE EXPORT ADMINISTRATION REGULATIONS. DIVERSION CONTRARY TO U.S. LAW PROHIBITED.

REVISION

ZONE	REV	DESCRIPTION	DATE	CHANGED BY	APPROVED
	A	INITIAL RELEASE	05/21/2025	KGLEBOVA	AGANWANI



CRIMP SIRE REQUIRED:

- CONTACT: SOLDER.
- FERRULE: .130 [3.3] HEX CRIMP TOOL.

UNLESS OTHERWISE SPECIFIED
LEADING DIMENSIONS ARE INCHES
DIMENSIONS IN [] ARE MILLIMETERS

TOLERANCES:
X = $\pm .2$ [5] FRACTIONS
XX = $\pm .02$ [0.5] $\pm 1/32$
XXX = $\pm .005$ [0.13] ANGLES $\pm 1^\circ$

CABLE LENGTH TOLERANCES:
 ≤ 12 [305] = ± 1 [25] / -0
 >12 [305] ≤ 60 [1524] = ± 2 [51] / -0
 >60 [1524] ≤ 120 [3048] = ± 4 [102] / -0
 >120 [3048] ≤ 300 [7620] = ± 6 [152] / -0
 >300 [7620] = $\pm 5\%$ / -0

ALL DIMENSIONS ARE FOR REFERENCE ONLY
AND SUBJECT TO CHANGE WITHOUT NOTICE
UN-DIMENSIONED/NON-CRITICAL FEATURES
MAY VARY IN SIZE AND LOCATION
COLORS MAY VARY



Website: www.FairviewMicrowave.com
Phone: 1.800.715.4396 | 1.972.649.6678



INTERPRET ALL DIMENSIONS AND
TOLERANCES PER ASME Y14.5

SCALE
NONE

SHEET
1 OF 1

DESCRIPTION

SMB PLUG RIGHT ANGLE CONNECTOR CRIMP ATTACHMENT
FOR LMR-100A-PVC, RG174, RG174NM, RG188, RG316,
0.100inch, VSWR 1.2

SIZE	CAGE CODE	DRAWN BY	ITEM NO.	REV
A	3FKR5	KGLEBOVA	FMCN5445	A