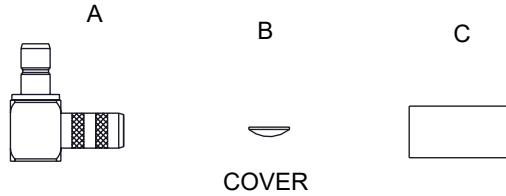
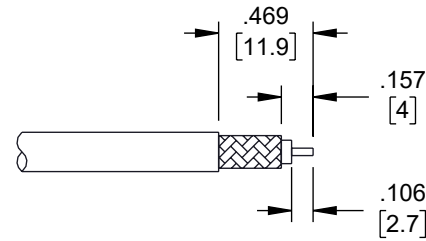


ASSEMBLY INSTRUCTIONS

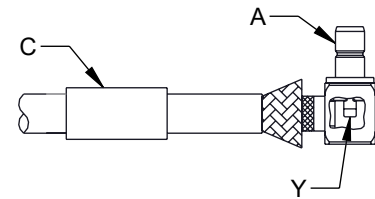
REVISION					
ZONE	REV	DESCRIPTION	DATE	CHANGED BY	APPROVED
	A	INITIAL RELEASE	05/21/2025	KGLEBOVA	AGANWANI



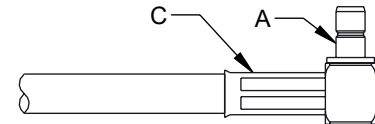
COVER



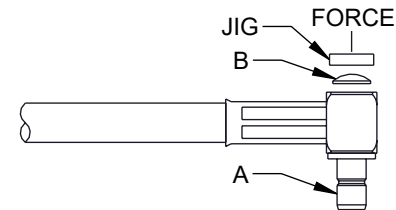
1. STRIP CABLE AS SHOWN.



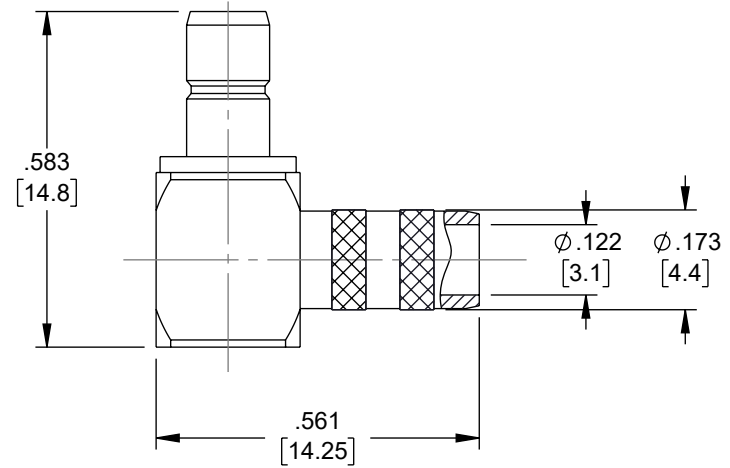
2. SLIDE FERRULE "C" OVER CABLE.
3. WRAP BRAIDING UPWARDS.
4. SLIDE CENTER CONDUCTOR ON CONTACT PIN OF CONNECTOR "A" AND SOLDER IN "Y".



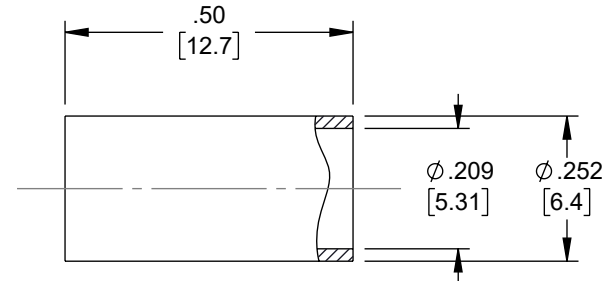
5. SLIDE FERRULE "C" TOWARDS CONNECTOR "A" AND CRIMP.



6. PRESS ON TOP OF COVER "B" WITH JIGS.



BODY



FERRULE

CRIMP SIZE REQUIRED:

- CONTACT: SOLDER.
- FERRULE: .217 [5.5] HEX CRIMP TOOL.

THE INFORMATION CONTAINED IN THIS DRAWING IS THE SOLE PROPERTY OF INFINITE ELECTRONICS, INC. ANY REPRODUCTION IN PART OR WHOLE WITHOUT THE WRITTEN PERMISSION OF INFINITE ELECTRONICS, INC. IS PROHIBITED. THESE COMMODITIES, TECHNOLOGY OR SOFTWARE WERE EXPORTED FROM THE UNITED STATES IN ACCORDANCE WITH THE EXPORT ADMINISTRATION REGULATIONS. DIVERSION CONTRARY TO U.S. LAW PROHIBITED.

UNLESS OTHERWISE SPECIFIED LEADING DIMENSIONS ARE INCHES DIMENSIONS IN [] ARE MILLIMETERS	
TOLERANCES:	
X = ±.2 [5]	FRACTIONS ± 1/32
XX = ±.02 [0.5]	ANGLES ± 1°
XXX = ±.005 [0.13]	
CABLE LENGTH TOLERANCES:	
≤12 [305] = +1 [25] / -0	
>12 [305] ≤ 60 [1524] = +2 [51] / -0	
>60 [1524] ≤ 120 [3048] = +4 [102] / -0	
>120 [3048] ≤ 300 [7620] = +6 [152] / -0	
>300 [7620] = +5% / -0	
ALL DIMENSIONS ARE FOR REFERENCE ONLY AND SUBJECT TO CHANGE WITHOUT NOTICE UN-DIMENSIONED/ON-CRITICAL FEATURES MAY VARY IN SIZE AND LOCATION COLORS MAY VARY	



Website: www.FairviewMicrowave.com
Phone: 1.800.715.4396 | 1.972.649.6678

INTERPRET ALL DIMENSIONS AND TOLERANCES PER ASME Y14.5	
SCALE NONE	SHEET 1 OF 1

DESCRIPTION
SMB JACK RIGHT ANGLE CONNECTOR CRIMP ATTACHMENT
FOR RG58CU, LMR-195, LMR-195-FR, LMR-195-LLPL, RG303HV,
TCOM-195, 0.195inch

SIZE	CAGE CODE	DRAWN BY	ITEM NO.	REV
A	3FKR5	KGLEBOVA	FMCN5441	A