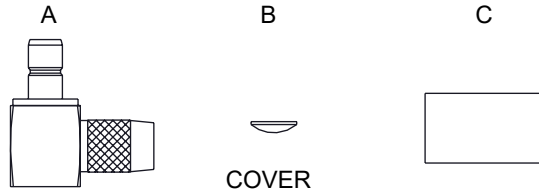
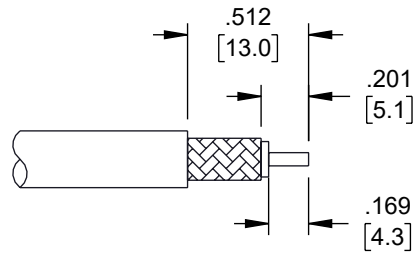


ASSEMBLY INSTRUCTIONS

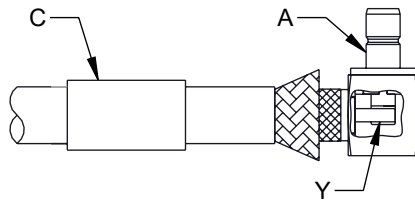
REVISION					
ZONE	REV	DESCRIPTION	DATE	CHANGED BY	APPROVED
	A	INITIAL RELEASE	05/21/2025	KGLEBOVA	AGANWANI



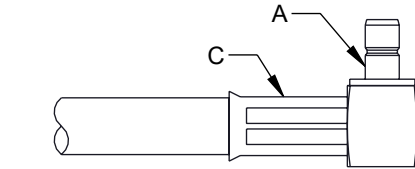
COVER



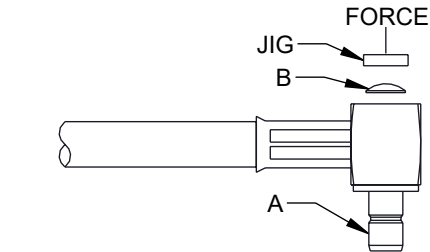
1. STRIP CABLE AS SHOWN.



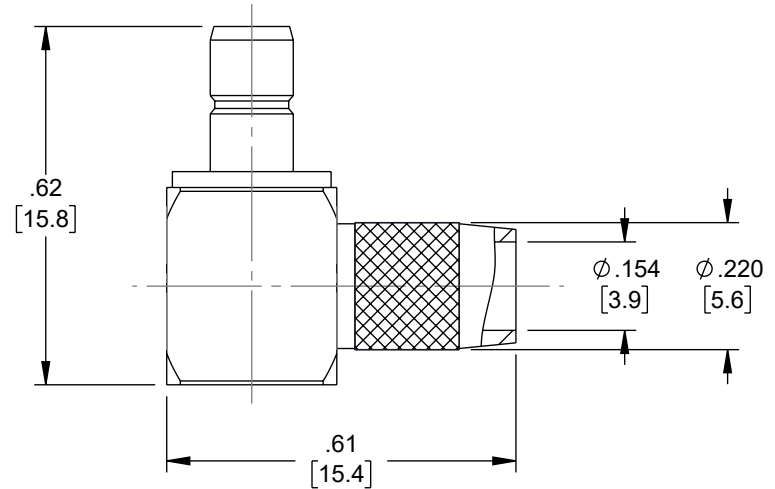
- SLIDE FERRULE "C" OVER CABLE.
- WRAP BRAIDING UPWARDS.
- SLIDE CENTER CONDUCTOR ON CONTACT PIN OF CONNECTOR "A" AND SOLDER IN "Y".



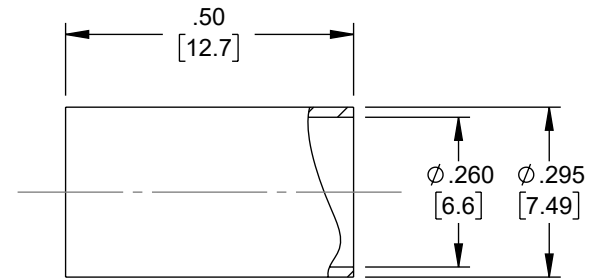
5. SLIDE FERRULE "C" TOWARDS CONNECTOR "A" AND CRIMP.



6. PRESS ON TOP OF COVER "B" WITH JIGS.



BODY



FERRULE

CRIMP SIZE REQUIRED:
CONTACT: SOLDER.
FERRULE: .256 [6.5] HEX CRIMP TOOL.

THE INFORMATION CONTAINED IN THIS DRAWING IS THE SOLE PROPERTY OF INFINITE ELECTRONICS, INC. ANY REPRODUCTION IN PART OR WHOLE WITHOUT THE WRITTEN PERMISSION OF INFINITE ELECTRONICS, INC. IS PROHIBITED. THESE COMMODITIES, TECHNOLOGY OR SOFTWARE WERE EXPORTED FROM THE UNITED STATES IN ACCORDANCE WITH THE EXPORT ADMINISTRATION REGULATIONS. DIVERSION CONTRARY TO U.S. LAW PROHIBITED.

UNLESS OTHERWISE SPECIFIED LEADING DIMENSIONS ARE INCHES DIMENSIONS IN [] ARE MILLIMETERS	
TOLERANCES:	FRACTIONS
X = ±.2 [5]	± 1/32
XX = ±.02 [0.5]	± 1/16
XXX = ±.005 [0.13]	± .001
CABLE LENGTH TOLERANCES:	
≤12 [305] = +1 [25] / -0	
>12 [305] ≤60 [1524] = +2 [51] / -0	
>60 [1524] ≤120 [3048] = +4 [102] / -0	
>120 [3048] ≤300 [7620] = +6 [152] / -0	
>300 [7620] = +5% / -0	
ALL DIMENSIONS ARE FOR REFERENCE ONLY AND SUBJECT TO CHANGE WITHOUT NOTICE UN-DIMENSIONED NON-CRITICAL FEATURES MAY VARY IN SIZE AND LOCATION COLORS MAY VARY	

Fairview Microwave® an INFINIT® brand		 INTERPRET ALL DIMENSIONS AND TOLERANCES PER ASME Y14.5	
Website: www.FairviewMicrowave.com Phone: 1.800.715.4396 1.972.649.6678		SCALE NONE	SHEET 1 OF 1
DESCRIPTION SMB JACK RIGHT ANGLE CONNECTOR CRIMP ATTACHMENT FOR LMR-240			
SIZE A	CAGE CODE 3FKR5	DRAWN BY KGLEBOVA	ITEM NO. FMCN5440
			REV A