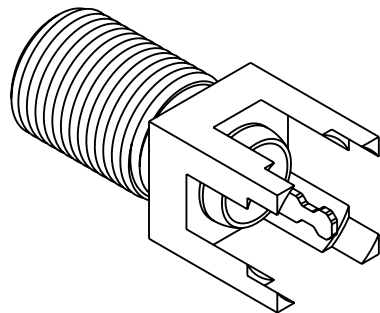
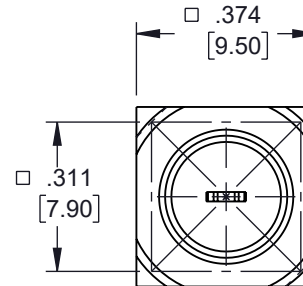
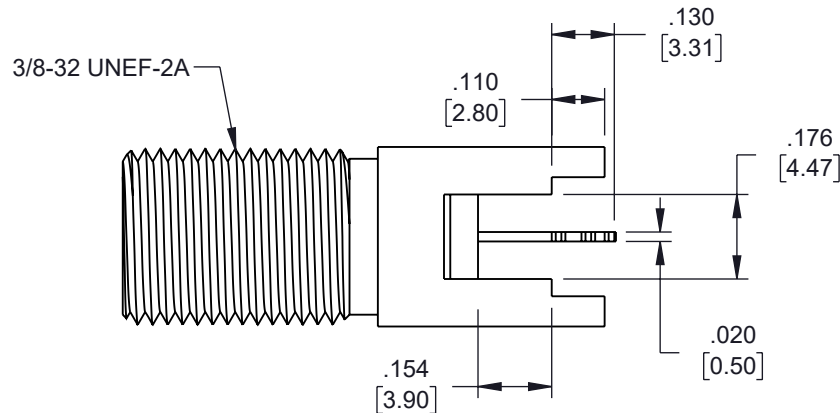
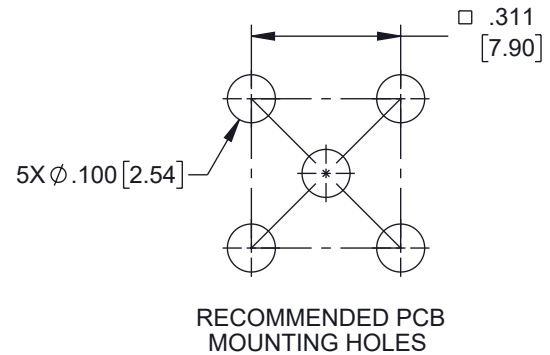
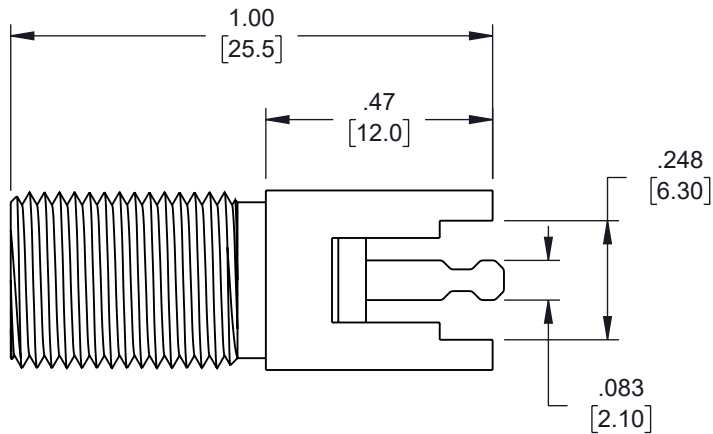
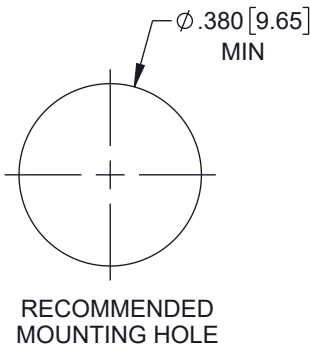
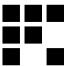



REVISION					
ZONE	REV	DESCRIPTION	DATE	CHANGED BY	APPROVED
	A	INITIAL RELEASE	7/24/2024	KDANG	AGANWANI



THE INFORMATION CONTAINED IN THIS DRAWING IS THE SOLE PROPERTY OF INFINITE ELECTRONICS, INC. ANY REPRODUCTION IN PART OR WHOLE WITHOUT THE WRITTEN PERMISSION OF INFINITE ELECTRONICS, INC. IS PROHIBITED. THESE COMMODITIES, TECHNOLOGY OR SOFTWARE WERE EXPORTED FROM THE UNITED STATES IN ACCORDANCE WITH THE EXPORT ADMINISTRATION REGULATIONS. DIVERSION CONTRARY TO U.S. LAW PROHIBITED.

UNLESS OTHERWISE SPECIFIED LEADING DIMENSIONS ARE INCHES DIMENSIONS IN [] ARE MILLIMETERS	
TOLERANCES:	
X = $\pm .2 [5]$	FRACTIONS $\pm 1/32$
XX = $\pm .02 [0.5]$	ANGLES $\pm 1^\circ$
XXX = $\pm .005 [0.13]$	
CABLE LENGTH TOLERANCES:	
$\leq 12 [305] = +1 [25] / -0$	
$>12 [305] \leq 60 [1524] = +2 [51] / -0$	
$>60 [1524] \leq 120 [3048] = +4 [102] / -0$	
$>120 [3048] \leq 300 [7620] = +6 [152] / -0$	
$>300 [7620] = +5\% / -0$	
ALL DIMENSIONS ARE FOR REFERENCE ONLY AND SUBJECT TO CHANGE WITHOUT NOTICE UN-DIMENSIONED/NON-CRITICAL FEATURES MAY VARY IN SIZE AND LOCATION COLORS MAY VARY	

 Fairview Microwave® an INFINIT® brand			
Website: www.FairviewMicrowave.com Phone: 1.800.715.4396 1.972.649.6678		INTERPRET ALL DIMENSIONS AND TOLERANCES PER ASME Y14.5	
DESCRIPTION		SCALE NONE	SHEET 1 OF 1
F FEMALE COMMERCIAL GRADE CONNECTOR SOLDER ATTACHMENT THRU HOLE PCB			
SIZE A	CAGE CODE 3FKR5	DRAWN BY KDANG	ITEM NO. FMCN5176
			REV A