

6

5

4

3

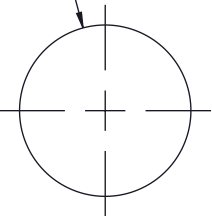
2

1

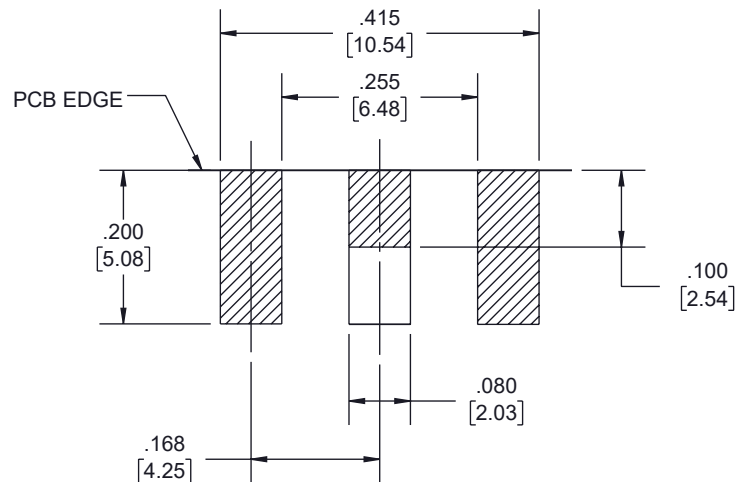
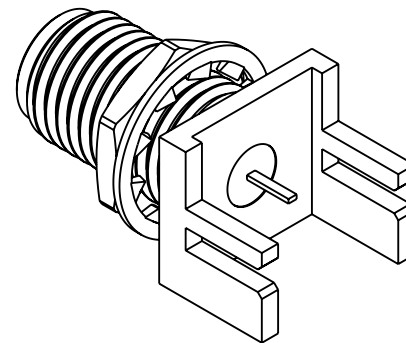
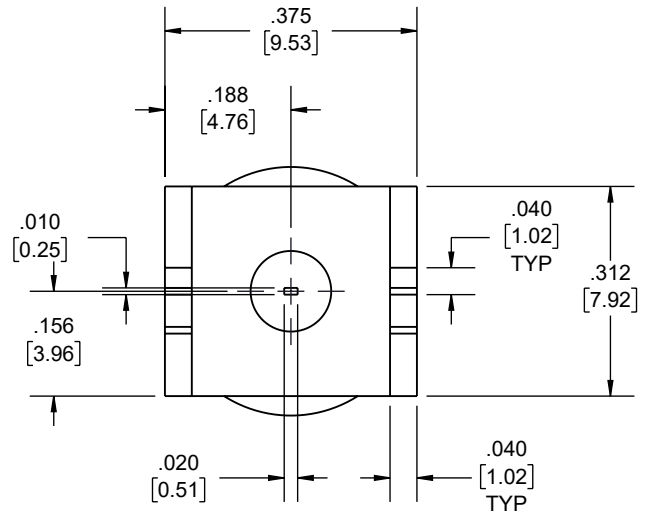
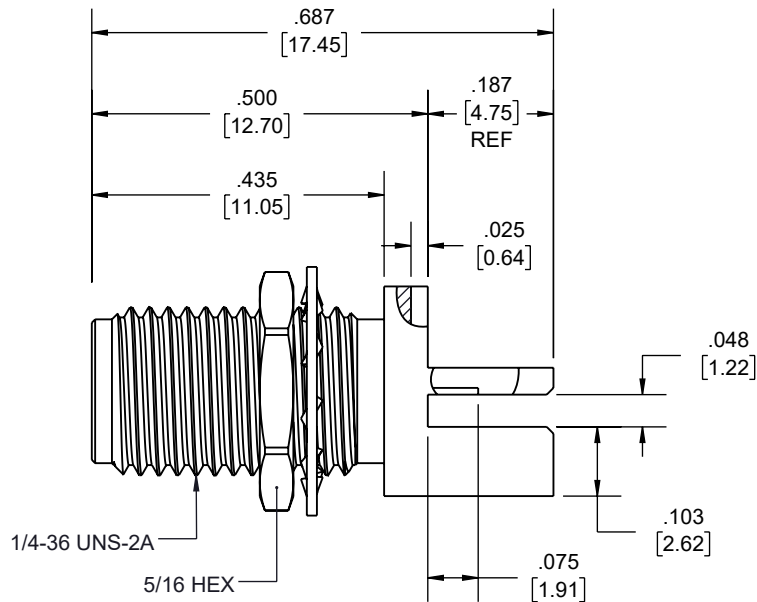
REVISION

ZONE	REV.	DESCRIPTION	DATE	CHANGED BY	APPROVED
	A	INITIAL RELEASE	12/22/2022	KDANG	AGANWANI

$\varnothing .255^{+.005}_{-.000}$
 $[6.48^{+0.13}_{0.00}]$



RECOMMENDED MOUNTING HOLE



RECOMMENDED LAND PATTERN

UNLESS OTHERWISE SPECIFIED
LEADING DIMENSIONS ARE INCHES
DIMENSIONS IN [] ARE MILLIMETERS

TOLERANCES:

.X = $\pm .2$ [5] FRACTIONS
 .XX = $\pm .02$ [.5] $\pm 1/32$
 .XXX = $\pm .005$ [.13] ANGLES $\pm 1^\circ$

CABLE LENGTH TOLERANCES:

>12 [305] = ± 1 [25] / -0
 >12 [305] \leq 60 [1524] = ± 2 [51] / -0
 >60 [1524] \leq 120 [3048] = ± 4 [102] / -0
 >120 [3048] \leq 300 [7620] = ± 6 [152] / -0
 >300 [7620] = $\pm 5\%$ / -0

ALL DIMENSIONS ARE FOR REFERENCE ONLY
AND SUBJECT TO CHANGE WITHOUT NOTICE.



Website: www.FairviewMicrowave.com
 Phone: 1.800.715.4396 | 1.972.649.6678



INTERPRET ALL DIMENSIONS AND
TOLERANCES PER ASME Y14.5

SCALE

NONE

SHEET

1 OF 1

DESCRIPTION

RF PCB Connector, SMA Female Bulkhead Mount Connector .042
inch End Launch PCB, .250 inch Diameter, .020 inch x .010 inch
Contact

SIZE	CAGE CODE	DRAWN BY	ITEM NO.	REV
A	3FKR5	KDANG	FMCN44207	A

THE INFORMATION CONTAINED IN THIS DRAWING IS THE SOLE PROPERTY OF INFINITE ELECTRONICS, INC. ANY REPRODUCTION IN PART OR WHOLE WITHOUT THE WRITTEN PERMISSION OF INFINITE ELECTRONICS, INC. IS PROHIBITED. THESE COMMODITIES, TECHNOLOGY OR SOFTWARE WERE EXPORTED FROM THE UNITED STATES IN ACCORDANCE WITH THE EXPORT ADMINISTRATION REGULATIONS. DIVERSION CONTRARY TO U.S. LAW PROHIBITED.

6

5

4

3

2

1