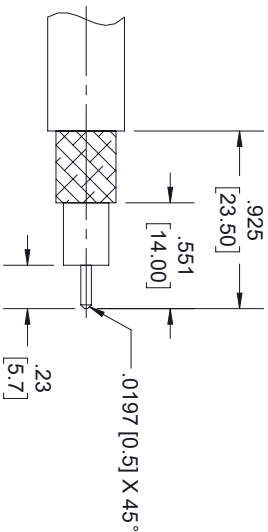
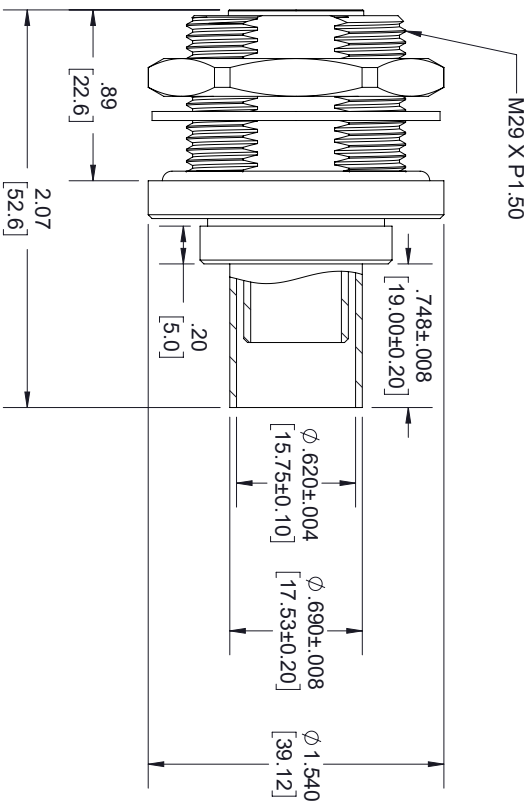
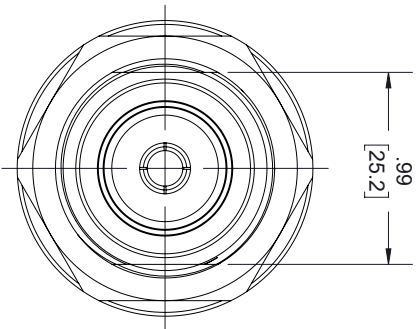


| REVISIONS | | | |
|-----------|-----------------|------------|-----------|
| REV. | DESCRIPTION | DATE | APPROVED |
| A | INITIAL RELEASE | 02/11/2022 | A.GANWANI |



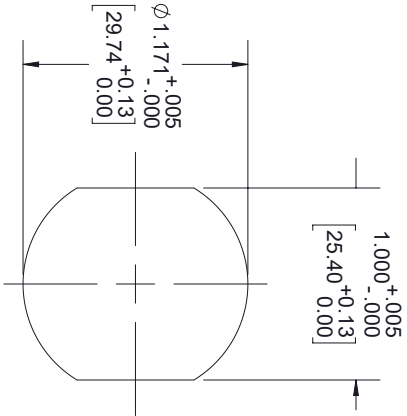
STRIPPING DIMENSIONS

ASSEMBLY PROCEDURES:

1. STRIP CABLE AS SHOWN & CHAMFER CENTER CONDUCTOR.
2. SLIDE FERRULE OVER CABLE. INSTALL CABLE INTO BODY OF CONNECTOR, PUSH UNTIL IT SEATS IN PLACE.
3. SLIDE FERRULE FORWARD AND BUTT AGAINST CONNECTOR SHOULDER, THEN CRIMP FERRULE.

CRIMP SIZE REQUIRED:

FERRULE: .610" [15.5] HEX. CRIMP TOOL.



MOUNTING HOLE

THESE COMMODITIES, TECHNOLOGY OR SOFTWARE WERE EXPORTED FROM THE UNITED STATES IN ACCORDANCE WITH THE EXPORT ADMINISTRATION REGULATIONS, DIVERSION CONTRARY TO U.S. LAW PROHIBITED.



| UNLESS OTHERWISE SPECIFIED LEADING DIMENSIONS ARE INCHES DIMENSIONS IN [] ARE MILLIMETERS | | | | THIRD-ANGLE PROJECTION | |
|---|-----------|-----------|----------|---|--|
| TOLERANCES: | | | | THE INFORMATION AND DESIGN IN THIS DOCUMENT IS THE PROPERTY OF FAIRVIEW MICROWAVE CORPORATION. ALL RIGHTS RESERVED. | |
| CABLE LENGTH (L) TOLERANCES: | | | | SHEET 1 OF 1 | |
| L ≤ 12 [305] = +1 [25] / -0 | | | | SCALE N/A | |
| 12 [305] < L ≤ 60 [1524] = +2 [51] / -0 | | | | REV A | |
| 60 [1524] < L ≤ 120 [3048] = +4 [102] / -0 | | | | | |
| 120 [3048] < L ≤ 300 [7620] = +6 [152] / -0 | | | | | |
| 300 [7620] < L = +5% / -0 | | | | | |
| X = ±.2 [5.08] FRACTIONS XX = ±.02 [.51] ± 1/32 XXX = ±.005 [.13] ANGLES ± 1° | | | | | |
| ALL DIMENSIONS SHOWN ARE FOR REFERENCE ONLY. | | | | | |
| SIZE | CAGE CODE | DRAWN BY | ITEM NO. | | |
| A | 3FKR5 | K.GLEBOVA | FMCN1836 | | |