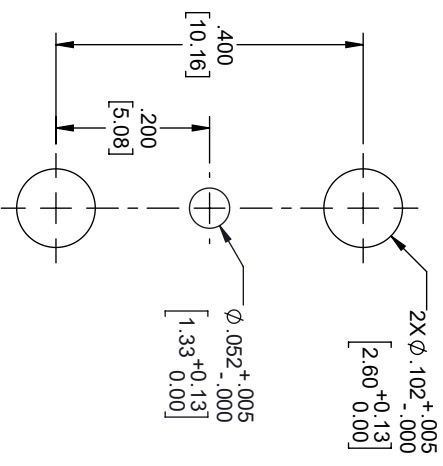
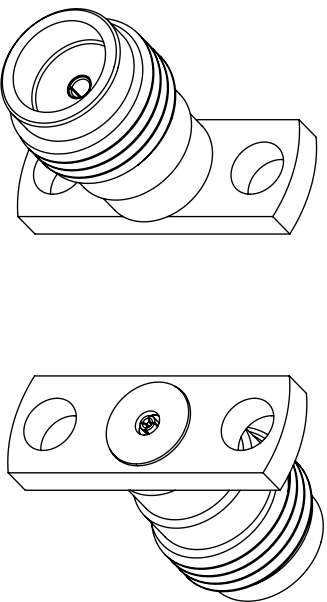
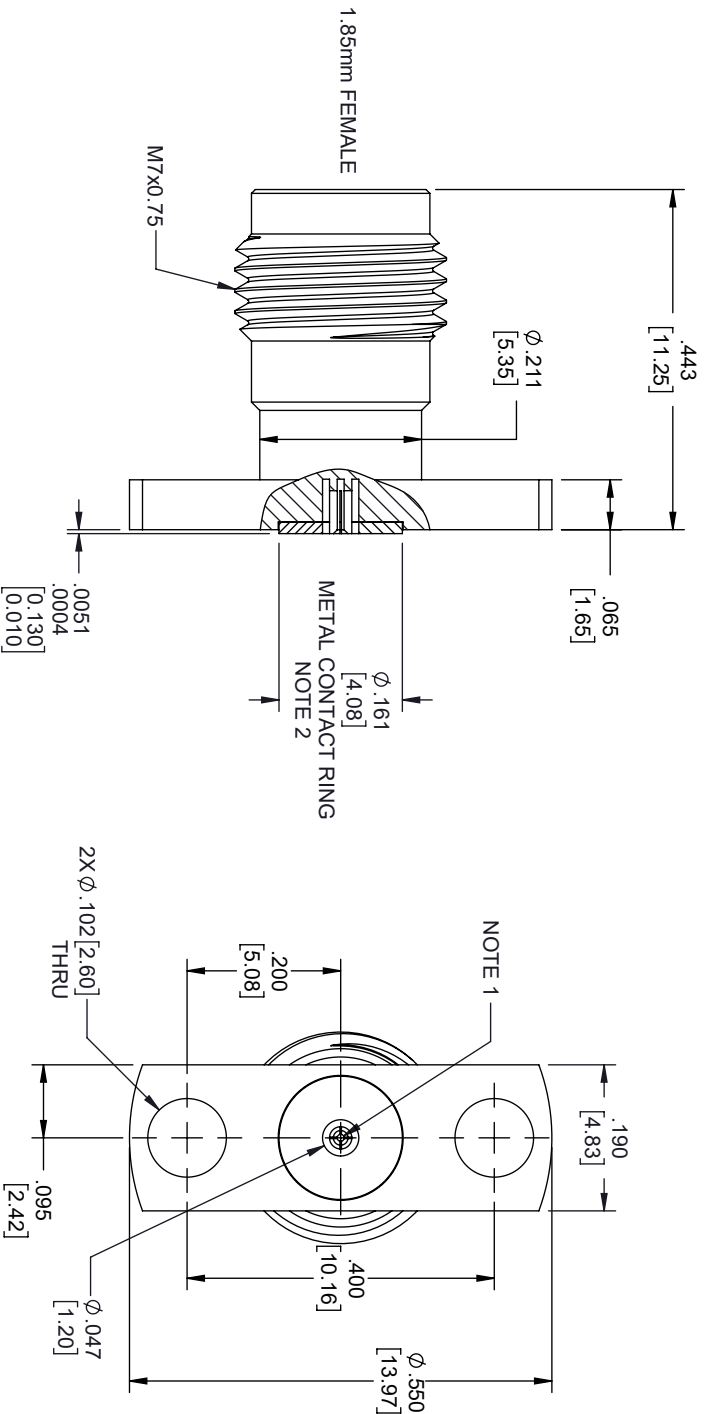


REVISIONS			
REV.	DESCRIPTION	DATE	APPROVED
A	INITIAL RELEASE	04/02/2020	S. ELLIS



MOUNTING HOLES  
PATTERN

- NOTES:
1. FEMALE CONTACT ACCEPTS PIN SIZE  $\phi$  .009 [0.23]  $\nabla$  .071 [1.80] MAX.
  2. SEPARATE METAL CONTACT RING (PASSIVATED).

THESE COMMODITIES, TECHNOLOGY OR SOFTWARE WERE EXPORTED FROM THE UNITED STATES IN ACCORDANCE WITH THE EXPORT  
ADMINISTRATION REGULATIONS, DIVERSION CONTRARY TO U.S. LAW PROHIBITED.



TITLE

UNLESS OTHERWISE SPECIFIED LEADING DIMENSIONS ARE INCHES DIMENSIONS IN [ ] ARE MILLIMETERS				THIRD ANGLE PROJECTION	
TOLERANCES:					
CABLE LENGTH (L) TOLERANCES:					
L $\leq$ 12 [305] = $\pm$ 1 [25] / -0					
12 [305] < L $\leq$ 60 [1524] = $\pm$ 2 [51] / -0					
60 [1524] < L $\leq$ 120 [3048] = $\pm$ 4 [102] / -0					
120 [3048] < L $\leq$ 300 [7620] = $\pm$ 6 [152] / -0					
300 [7620] < L = $\pm$ 5% L / -0					
X = $\pm$ 2 [5.08] FRACTIONS XX = $\pm$ 02 [ .51] $\pm$ 1/32 XXX = $\pm$ 005 [ .13] ANGLES $\pm$ 1°					
ALL DIMENSIONS SHOWN ARE FOR REFERENCE ONLY.					
SIZE	GAGE CODE	DRAWN BY	ITEM NO.		
A	3FKR5	DZINN	FMCN1811		
SCALE					
N/A					
REV					
A					