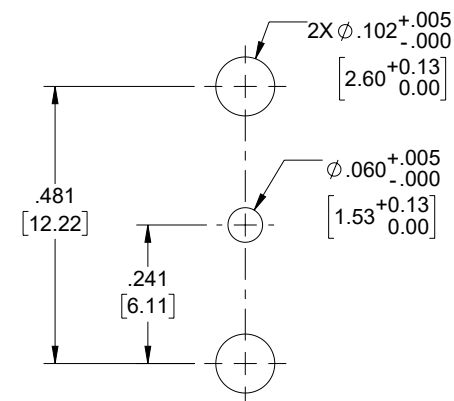
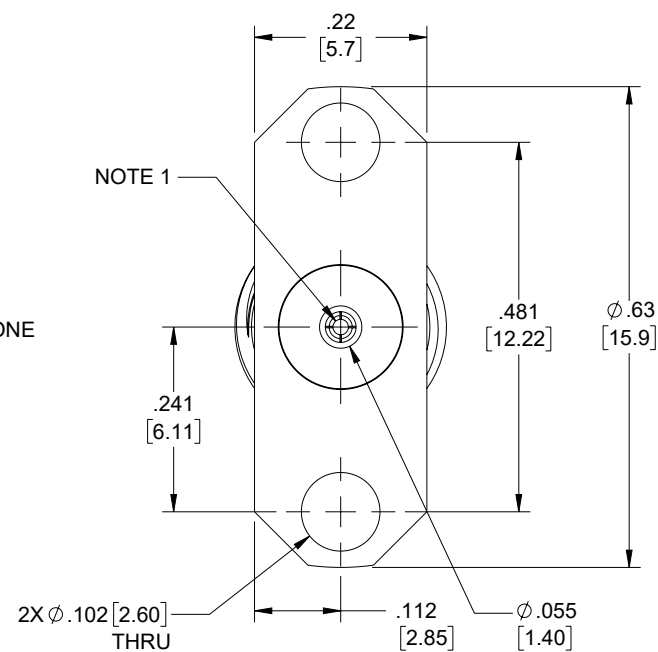
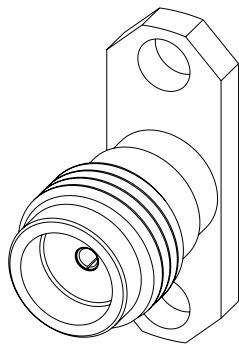
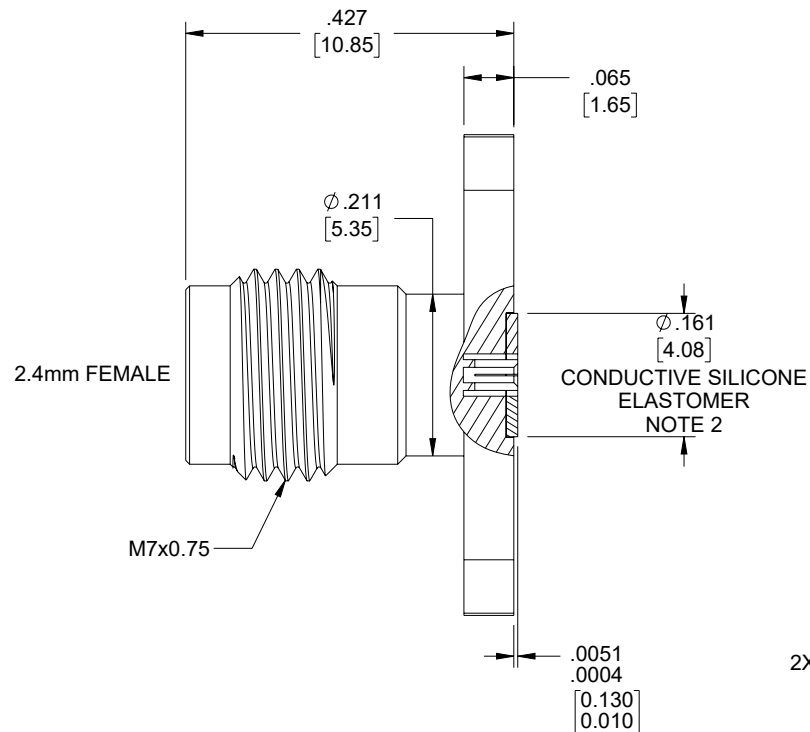


6 5 4 3 2 1

## REVISION

ZONE	REV	DESCRIPTION	DATE	CHANGED BY	APPROVED
	B	ECO-12639	10/04/2023	DMAY	SRAUTUS

MOUNTING HOLES  
PATTERN

## NOTES:

1. FEMALE CONTACT ACCEPTS PIN SIZE  $\phi .015$  [0.38]  $\nabla .071$  [1.80] MAX.
2. SEPARATE CONDUCTIVE SILICONE ELASTOMER.

THE INFORMATION CONTAINED IN THIS DRAWING IS THE SOLE PROPERTY OF INFINITE ELECTRONICS, INC. ANY REPRODUCTION IN PART OR WHOLE WITHOUT THE WRITTEN PERMISSION OF INFINITE ELECTRONICS, INC. IS PROHIBITED. THESE COMMODITIES, TECHNOLOGY OR SOFTWARE WERE EXPORTED FROM THE UNITED STATES IN ACCORDANCE WITH THE EXPORT ADMINISTRATION REGULATIONS. DIVERSION CONTRARY TO U.S. LAW PROHIBITED.

UNLESS OTHERWISE SPECIFIED  
LEADING DIMENSIONS ARE INCHES  
DIMENSIONS IN [ ] ARE MILLIMETERS

## TOLERANCES:

X = $\pm .2$ [5]	FRACTIONS $\pm 1/32$
.XX = $\pm .02$ [0.5]	ANGLES $\pm 1^\circ$
.XXX = $\pm .005$ [0.13]	

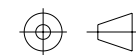
## CABLE LENGTH TOLERANCES:

$\leq 12$ [305] = $\pm 1$ [25] / -0
$>12$ [305] $\leq 60$ [1524] = $\pm 2$ [51] / -0
$>60$ [1524] $\leq 120$ [3048] = $\pm 4$ [102] / -0
$>120$ [3048] $\leq 300$ [7620] = $\pm 6$ [152] / -0
$>300$ [7620] = $\pm 5\%$ / -0

ALL DIMENSIONS ARE FOR REFERENCE ONLY  
AND SUBJECT TO CHANGE WITHOUT NOTICE.  
UN-DIMENSIONED/NON-CRITICAL FEATURES  
MAY VARY IN SIZE AND LOCATION  
COLORS MAY VARY



Website: [www.FairviewMicrowave.com](http://www.FairviewMicrowave.com)  
Phone: 1.800.715.4396 | 1.972.649.6678



INTERPRET ALL DIMENSIONS AND  
TOLERANCES PER ASME Y14.5

SCALE	SHEET
NONE	1 OF 1

DESCRIPTION  
2.4mm FIELD REPLACEABLE JACK,  $\phi 15.9\text{mm}$  (.625inch) 2 HOLE  
FLANGE WITH EMI GASKET, ACCEPTS  $\phi 0.38\text{mm}$  (.015inch) PIN,  
50GHz VSWR1.2

SIZE	CAGE CODE	DRAWN BY	ITEM NO.	REV
A	3FKR5	MVEERAPPAN	FMCN1803	B

6 5 4 3 2 1