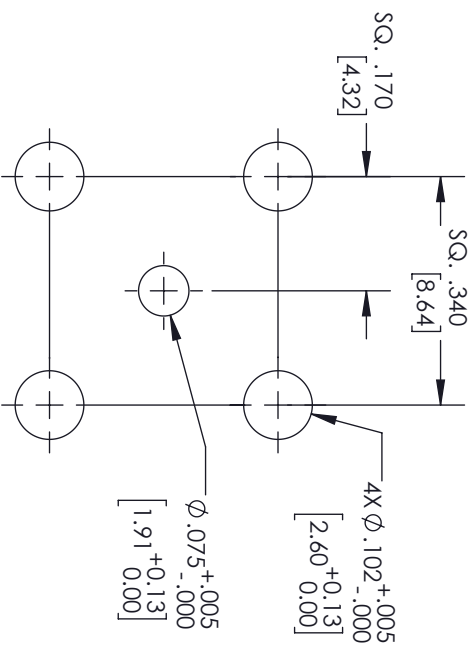
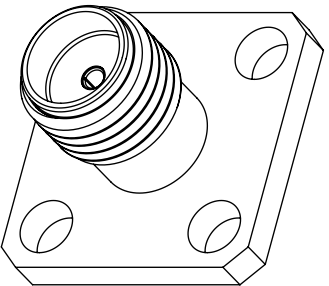
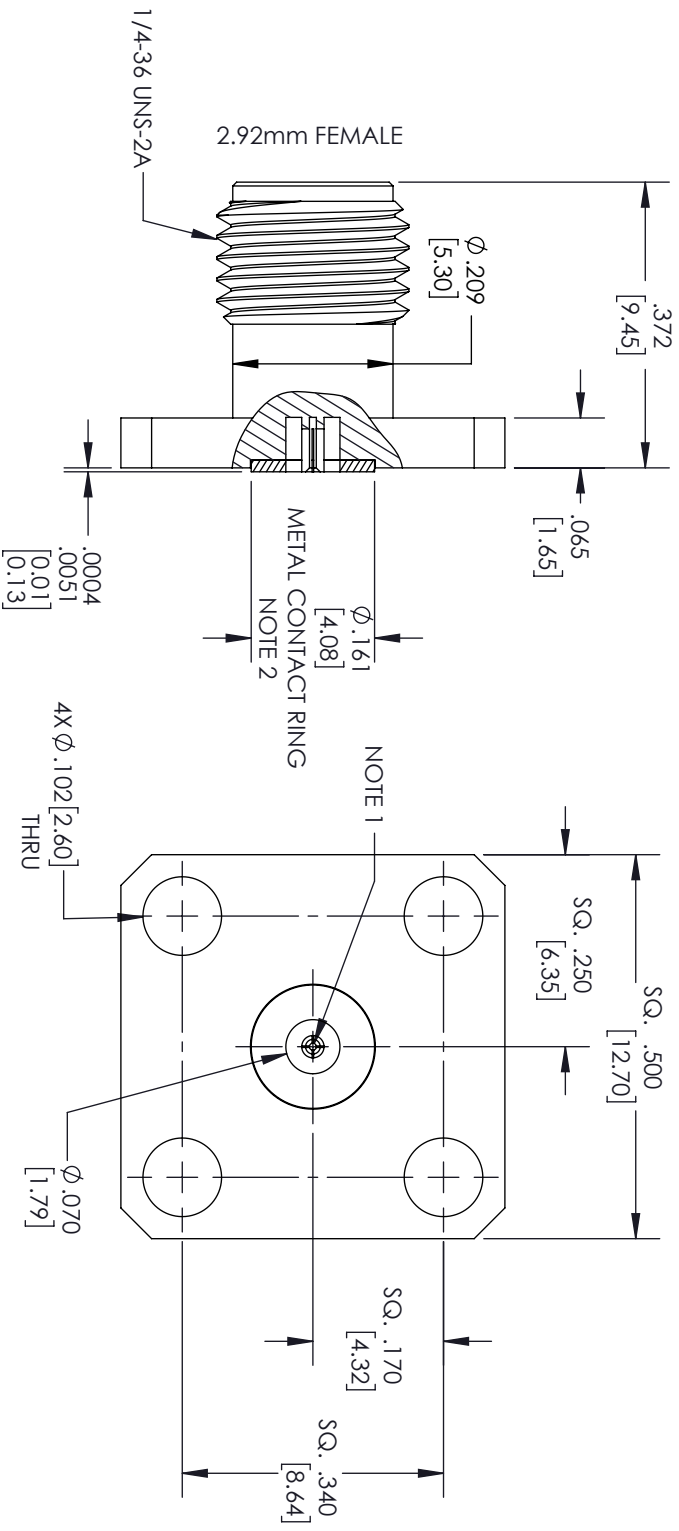


REVISIONS			
REV.	DESCRIPTION	DATE	APPROVED
A	INITIAL RELEASE	11/11/2021	SRAUTUS



### MOUNTING HOLES PATTERN

- NOTES:
1. FEMALE CONTACT ACCEPTS PIN SIZE  $\phi .020$  [0.51]  $\nabla .071$  [1.80] MAX.
  2. SEPARATE METAL CONTACT RING (PASSIVATED).

THESE COMMODITIES, TECHNOLOGY OR SOFTWARE WERE EXPORTED FROM THE UNITED STATES IN ACCORDANCE WITH THE EXPORT ADMINISTRATION REGULATIONS, DIVERSION CONTRARY TO U.S. LAW PROHIBITED.



TITLE

ALL DIMENSIONS SHOWN ARE FOR REFERENCE ONLY.				SCALE	
SIZE	CAGE CODE	DRAWN BY	ITEM NO.	REV	
A	3FKR5	MVEERAPPAN	FMCN1781	N/A	

#### TOLERANCES:

X = ±.2 [5.08]  
XX = ±.02 [51]  
XXX = ±.005 [13]

FRACTIONS  
± 1/32  
ANGLES ± 1°

#### CABLE LENGTH (L) TOLERANCES:

L ≤ 12 [305] = ±1 [25] / -0  
12 [305] < L ≤ 60 [1524] = ±2 [51] / -0  
60 [1524] < L ≤ 120 [3048] = ±4 [102] / -0  
120 [3048] < L ≤ 300 [7620] = ±6 [152] / -0  
300 [7620] < L = ±5%L / -0



THE INFORMATION AND DESIGN IN THIS DOCUMENT IS THE PROPERTY OF FAIRVIEW MICROWAVE CORPORATION. ALL RIGHTS RESERVED.

SHEET 1 OF 1