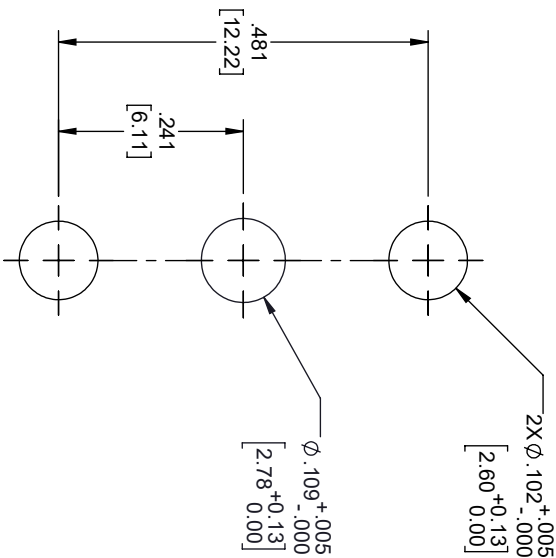
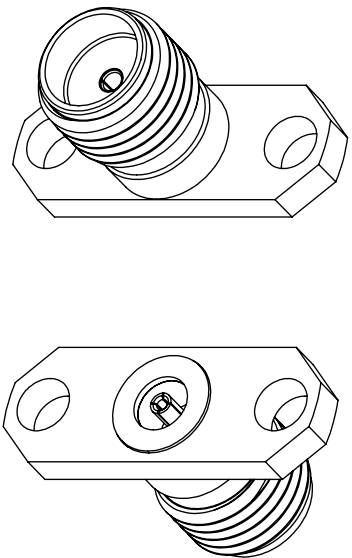
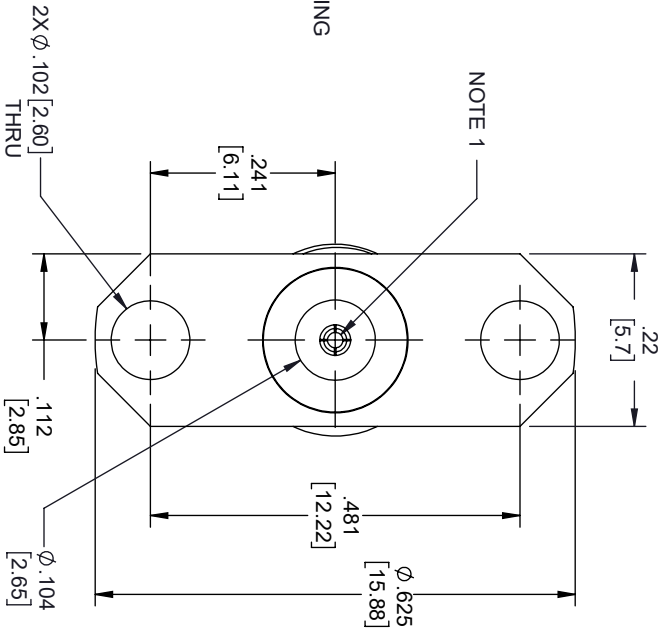
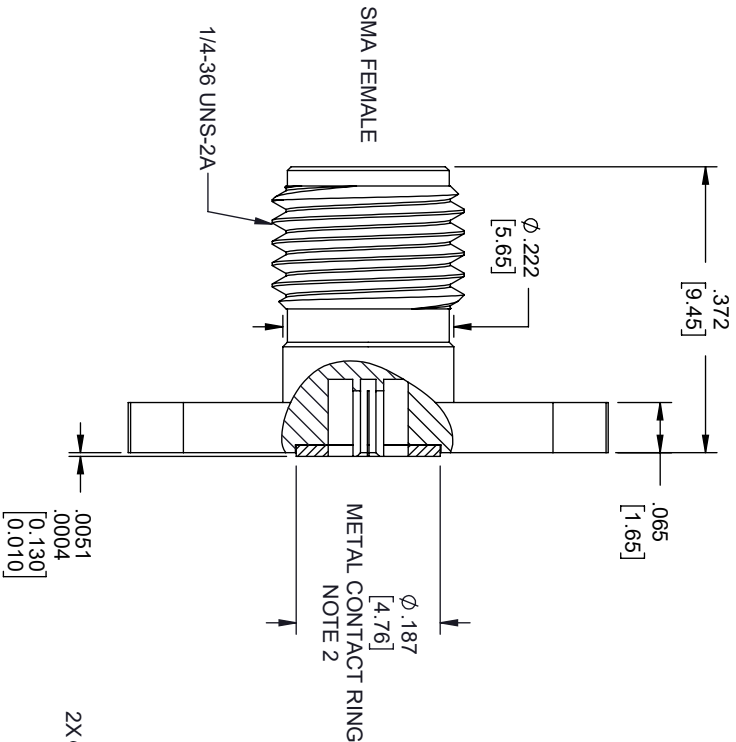


REVISIONS				
REV.	DESCRIPTION	DATE	APPROVED	
A	INITIAL RELEASE	04/06/2020	S. ELLIS	



- NOTES:
- FEMALE CONTACT ACCEPTS PIN SIZE  $\phi$ .020 [0.51] T.100 [2.55] MAX.
  - SEPARATE METAL CONTACT RING (PASSIVATED).

THESE COMMODITIES, TECHNOLOGY OR SOFTWARE WERE EXPORTED FROM THE UNITED STATES IN ACCORDANCE WITH THE EXPORT ADMINISTRATION REGULATIONS, DIVERSION CONTRARY TO U.S. LAW PROHIBITED.



ALL DIMENSIONS SHOWN ARE FOR REFERENCE ONLY.				
SIZE	GAGE CODE	DRAWN BY	ITEM NO.	REV
A	3FKR5	DZINN	FMCN1638	A