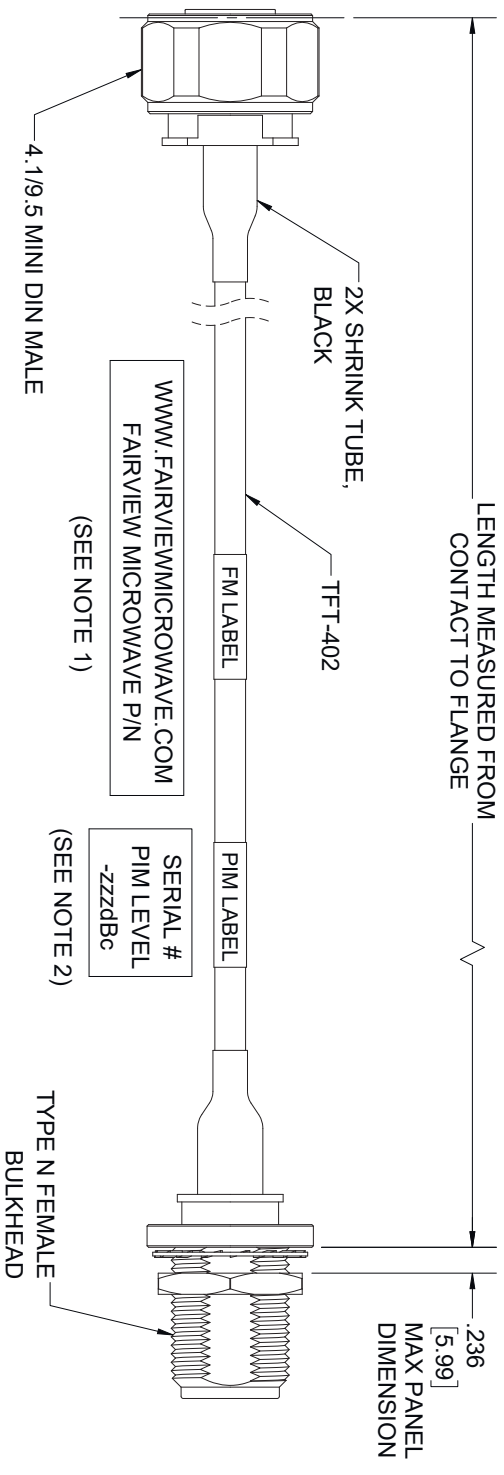
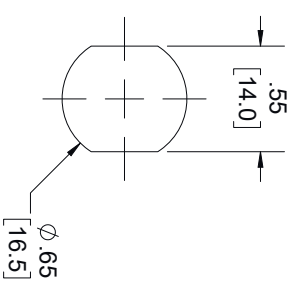


REVISIONS			
REV.	DESCRIPTION	DATE	APPROVED
A	INITIAL RELEASE	7/30/21	SRAUTUS



1. CABLES 84" AND UNDER HAVE 1 LABEL CENTERED. CABLES OVER 84" HAVE 2 LABELS, ONE AT EACH END 12" FROM THE FRONT OF THE CONNECTOR.
2. PIM LABEL 6" FROM CABLE END 1 PLACE.




RECOMMENDED
PANEL CUTOUT

THESE COMMODITIES, TECHNOLOGY OR SOFTWARE WERE EXPORTED FROM THE UNITED STATES IN ACCORDANCE WITH THE EXPORT ADMINISTRATION REGULATIONS, DIVERSION CONTRARY TO U.S. LAW PROHIBITED.



TITLE

<p>UNLESS OTHERWISE SPECIFIED LEADING DIMENSIONS ARE INCHES DIMENSIONS IN [] ARE MILLIMETERS</p>				<p>THIRD-ANGLE PROJECTION</p> 	
<p><u>TOLERANCES:</u></p>				<p><u>CABLE LENGTH (L) TOLERANCES:</u></p>	
<p>X = ± .2 [.08] FRACTIONS L ≤ 12 [305] = +1 [25] / -0 XX = ± .02 [.51] ± 1/32 12 [305] < L ≤ 60 [1524] = +2 [51] / -0 XXX = ± .005 [.13] ANGLES ± 1° 60 [1524] < L ≤ 120 [3048] = +4 [102] / -0 120 [3048] < L ≤ 300 [7620] = +6 [152] / -0 300 [7620] < L = +5% / -0</p>				<p>THE INFORMATION AND DESIGN IN THIS DOCUMENT IS THE PROPERTY OF FARWIRE/MICROWAVE CORPORATION. ALL RIGHTS RESERVED.</p>	
<p>ALL DIMENSIONS SHOWN ARE FOR REFERENCE ONLY.</p>				<p>SCALE N/A</p>	
SIZE	CAGE CODE	DRAWN BY	ITEM NO.	REV	
A	3FKR5	DMAY			A
				FMC2423	