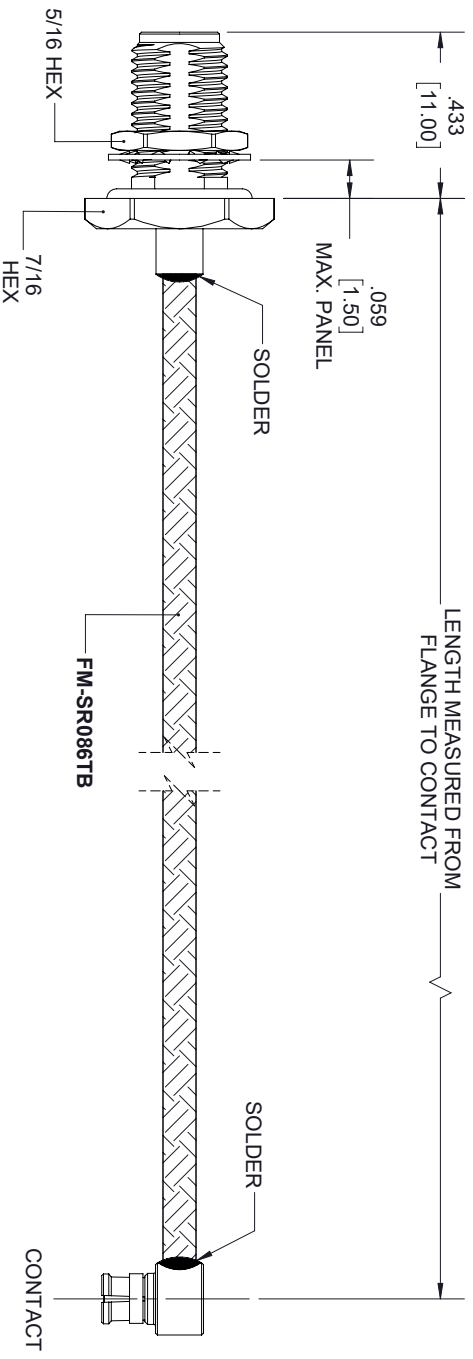
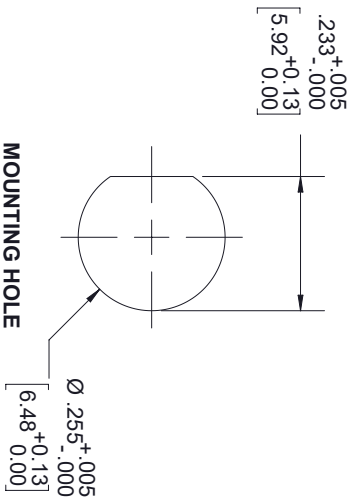


REVISIONS			
REV.	DESCRIPTION	DATE	APPROVED
A	INITIAL RELEASE	11/25/19	S. ELLIS



**SMA FEMALE
BULKHEAD**

SMP FEMALE
RA

THESE COMMODITIES, TECHNOLOGY OR SOFTWARE WERE EXPORTED FROM THE UNITED STATES IN ACCORDANCE WITH THE EXPORT ADMINISTRATION REGULATIONS. DIVERSION CONTRARY TO U.S. LAW PROHIBITED.



<div><div><div></div><div></div><div></div><div></div></div><div><div></div><div></div><div></div><div></div></div></div> <div><div>Fairview Microwave™</div><div>an INFINITI® brand</div></div>					UNLESS OTHERWISE SPECIFIED LEADING DIMENSIONS ARE INCHES DIMENSIONS IN () ARE MILLIMETERS					THROUGH & PROTECTION	
TOLERANCES:					CABLE LENGTH (L) TOLERANCES:					THE INFORMATION AND DESIGN IN THIS DOCUMENT IS THE PROPERTY OF FAIRVIEW MICROWAVE CORPORATION. ALL RIGHTS RESERVED.	
X = ± .2 [5.08] FRACTIONS XX = ± .02 [.51] XXX = ± .005 [.13]					L ≤ 12 [305] = +1 [25] / -0 12 [305] < L ≤ 60 [1524] = +2 [51] / -0 60 [1524] < L ≤ 120 [3048] = +4 [102] / -0 120 [3048] < L ≤ 300 [7620] = +6 [152] / -0 300 [7620] < L = +5% L / -0					SHEET 1 OF 1	
ALL DIMENSIONS SHOWN ARE FOR REFERENCE ONLY.					SCALE					N/A	
SIZE	CAGE CODE	DRAWN BY	PART NUMBER	REV							
A	3FKR5	K.DANG	FMCA2103	A							