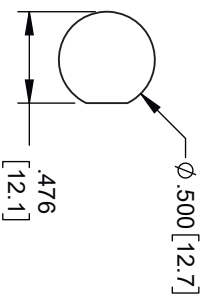
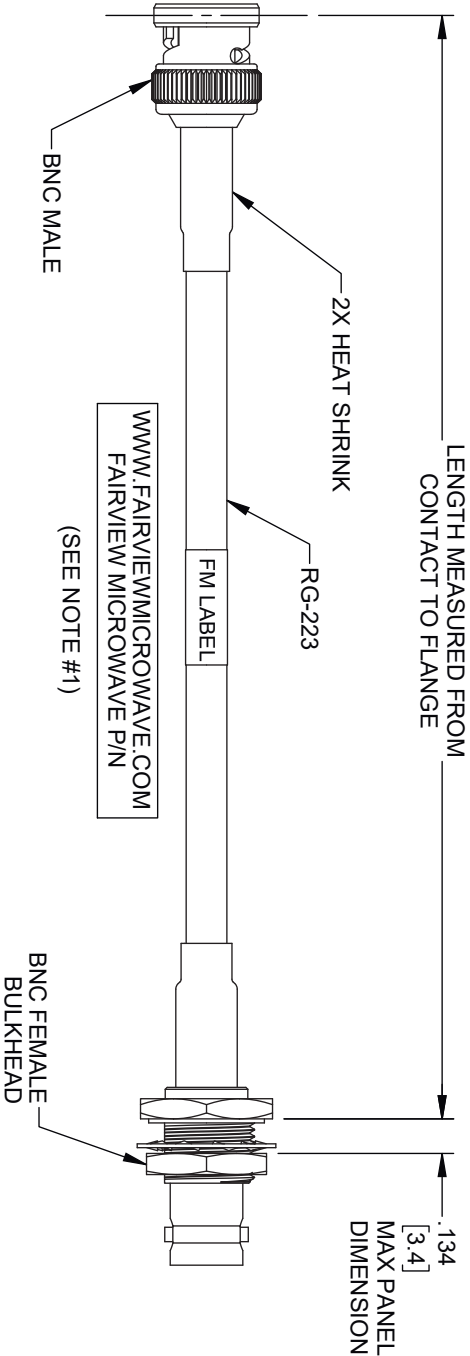


REVISIONS			
REV.	DESCRIPTION	DATE	APPROVED
A	INITIAL RELEASE	11/11/2021	SRAUTUS



MOUNTING HOLE

- NOTES:
1. CABLES 36" AND UNDER HAVE 1 LABEL CENTERED. CABLES OVER 36" HAVE 2 LABELS, ONE AT EACH END 6.0" FROM THE END OF THE CONNECTOR.

THESE COMMODITIES, TECHNOLOGY OR SOFTWARE WERE EXPORTED FROM THE UNITED STATES IN ACCORDANCE WITH THE EXPORT ADMINISTRATION REGULATIONS, DIVERSION CONTRARY TO U.S. LAW PROHIBITED.



TITLE				
SIZE	CAGE CODE	DRAWN BY	ITEM NO.	SCALE
A	3FKR5	DMAY	FMC00187	N/A
ALL DIMENSIONS SHOWN ARE FOR REFERENCE ONLY.				
UNLESS OTHERWISE SPECIFIED LEADING DIMENSIONS ARE INCHES				
DIMENSIONS IN [] ARE MILLIMETERS				
TOLERANCES:				
CABLE LENGTH (L) TOLERANCES:				
L ≤ 12 [305] = +1 [25] / -0				
12 [305] < L ≤ 60 [1524] = +2 [51] / -0				
60 [1524] < L ≤ 120 [3048] = +4 [102] / -0				
120 [3048] < L ≤ 300 [7620] = +6 [152] / -0				
300 [7620] < L = +5%L / -0				
X = ±.2 [5.08] FRACTIONS				
XX = ±.02 [.51] ± 1/32				
XXX = ±.005 [.13] ANGLES ± 1°				
THIRD ANGLE PROJECTION				
THE INFORMATION AND DESIGN IN THIS DOCUMENT IS THE PROPERTY OF FAIRVIEW MICROWAVE CORPORATION. ALL RIGHTS RESERVED.				
SHEET 1 OF 1				
REV A				