

6

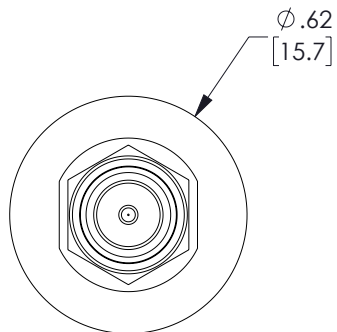
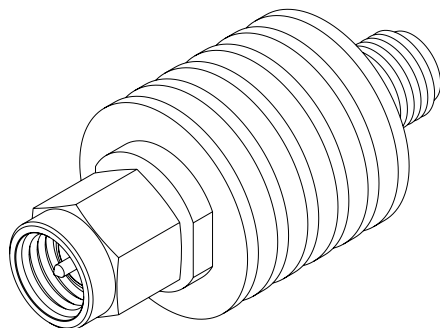
5

4

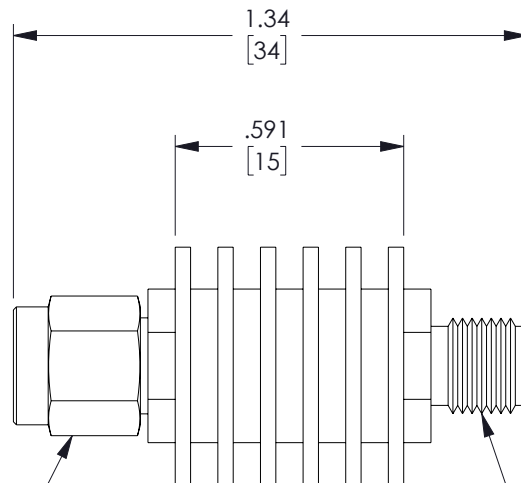
3

2

1



SMA MALE  
CONNECTOR



SMA FEMALE  
CONNECTOR

THE INFORMATION CONTAINED IN THIS DRAWING IS THE SOLE PROPERTY OF INFINITE ELECTRONICS, INC. ANY REPRODUCTION IN PART OR WHOLE WITHOUT THE WRITTEN PERMISSION OF INFINITE ELECTRONICS, INC. IS PROHIBITED.  
THESE COMMODITIES, TECHNOLOGY OR SOFTWARE WERE EXPORTED FROM THE UNITED STATES IN ACCORDANCE WITH THE EXPORT ADMINISTRATION REGULATIONS. DIVERSION CONTRARY TO U.S. LAW PROHIBITED.

UNLESS OTHERWISE SPECIFIED  
LEADING DIMENSIONS ARE INCHES  
DIMENSIONS IN [ ] ARE MILLIMETERS

TOLERANCES:

.X =  $\pm .2$  [ 5 ]      FRACTIONS  
.XX =  $\pm .02$  [ .5 ]       $\pm 1/32$   
.XXX =  $\pm .005$  [ .13 ]      ANGLES  $\pm 1^\circ$

CABLE LENGTH TOLERANCES:

>12 [305] =  $\pm 1$  [25] / -0  
>12 [305]  $\leq$  60 [1524] =  $\pm 2$  [51] / -0  
>60 [1524]  $\leq$  120 [3048] =  $\pm 4$  [102] / -0  
>120 [3048]  $\leq$  300 [7620] =  $\pm 6$  [152] / -0  
>300 [7620] =  $\pm 5\%$  / -0

ALL DIMENSIONS ARE FOR REFERENCE ONLY  
AND SUBJECT TO CHANGE WITHOUT NOTICE.



Website: [www.FairviewMicrowave.com](http://www.FairviewMicrowave.com)  
Phone: 1.800.715.4396 | 1.972.649.6678



INTERPRET ALL DIMENSIONS AND  
TOLERANCES PER ASME Y14.5

SCALE

NONE

SHEET

1 OF 1

DESCRIPTION

30 dB FIXED ATTENUATOR, SMA MALE TO SMA FEMALE, BLACK  
ANODIZE ALUMINUM BODY RATED TO 5 WATTS UP TO 12.4 GHz

SIZE

A

CAGE CODE

3FKR5

DRAWN BY

DMAY

ITEM NO.

FMAT7460-30

REV

A

6

5

4

3

2

1