

6

5

4

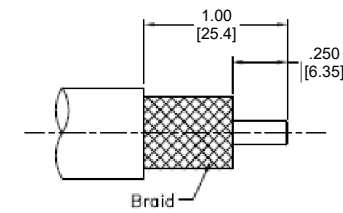
3

2

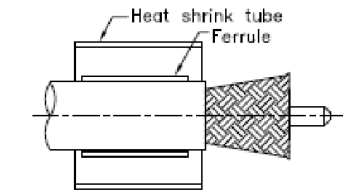
1

Installation Instruction

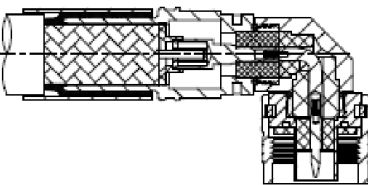
| REVISION | | | | | |
|----------|-----|-------------|------------|------------|----------|
| ZONE | REV | DESCRIPTION | DATE | CHANGED BY | APPROVED |
| | B | ECO-14270 | 06/02/2025 | KDANG | SRAUTUS |



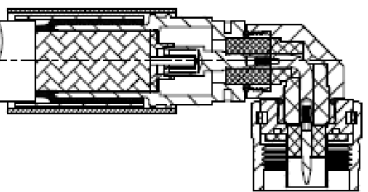
1. A. Cut the cable squarely while keeping it round using the CCT-02 cutting tool.
- B. Trim cable to the dimensions shown using the CST-600 prep tool.
- C. Remove any residual plastic from the center conductor.
- D. Deburr center conductor using the CST-600 or a fine file.



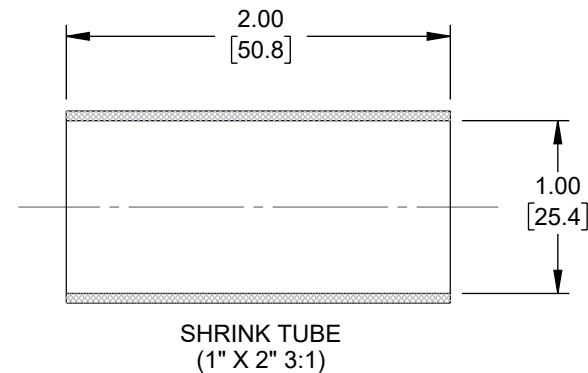
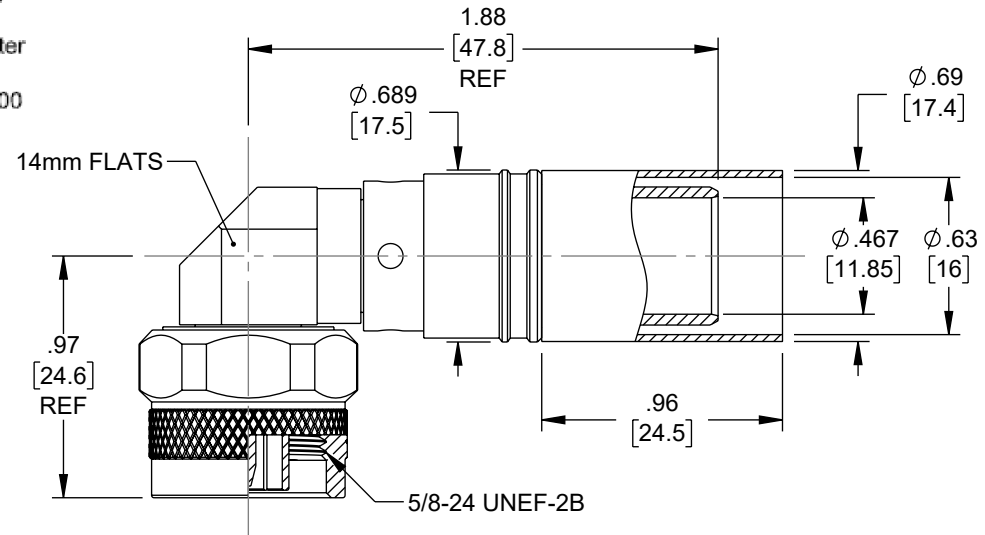
2. A. Slide crimp ferrule and heat shrink tube over the cable.
- B. Flare the braid.



3. A. Insert cable into connector body until dielectric is seated and center conductor is inserted fully into connector center pin.



4. A. Slide crimp ferrule over braid and crimp as close to body as possible using .610" HEX crimp tooling. Pay attention to the crimp area, do not crimp rear of crimp sleeve.
- B. Heat shrink tube over rear of connector body and down on to cable jacket using hot air gun.
- C. Times supply rubber boot 3109-401(WSB-600) as an option to instead of heat shrink tube.



THE INFORMATION CONTAINED IN THIS DRAWING IS THE SOLE PROPERTY OF INFINITE ELECTRONICS, INC. ANY REPRODUCTION IN PART OR WHOLE WITHOUT THE WRITTEN PERMISSION OF INFINITE ELECTRONICS, INC. IS PROHIBITED. THESE COMMODITIES, TECHNOLOGY OR SOFTWARE WERE EXPORTED FROM THE UNITED STATES IN ACCORDANCE WITH THE EXPORT ADMINISTRATION REGULATIONS. DIVERSION CONTRARY TO U.S. LAW PROHIBITED.

UNLESS OTHERWISE SPECIFIED
LEADING DIMENSIONS ARE INCHES
DIMENSIONS IN [] ARE MILLIMETERS

TOLERANCES:
X = ±.2 [5] FRACTIONS ± 1/32
XX = ±.02 [0.5] ANGLES ± 1°
XXX = ±.005 [0.13]

CABLE LENGTH TOLERANCES:
≤12 [305] = +1 [25] / -0
>12 [305] ≤60 [1524] = +2 [51] / -0
>60 [1524] ≤120 [3048] = +4 [102] / -0
>120 [3048] ≤300 [7620] = +6 [152] / -0
>300 [7620] = +5% / -0

ALL DIMENSIONS ARE FOR REFERENCE ONLY
AND SUBJECT TO CHANGE WITHOUT NOTICE
UN-DIMENSIONED NON-CRITICAL FEATURES
MAY VARY IN SIZE AND LOCATION
COLORS MAY VARY



Website: www.FairviewMicrowave.com
Phone: 1.800.715.4396 | 1.972.649.6678

INTERPRET ALL DIMENSIONS AND
TOLERANCES PER ASME Y14.5

SCALE NONE SHEET 1 OF 1

DESCRIPTION

RIGHT ANGLE N MALE (PLUG) CONNECTOR FOR LMR-600
CABLE, CRIMP/NON-SOLDER CONTACT

| SIZE | CAGE CODE | DRAWN BY | ITEM NO. | REV |
|------|-----------|----------|-----------------|-----|
| A | 3FKR5 | KDANG | EZ-600-NMH-RA-X | B |

6

5

4

3

2

1